



140 LEAPING POWDER ROAD



8 Bedroom • 6.5 Bath • 11,203 SF • \$3,500,000 • MLS# 202001819



LIVING & DINING

⇒ Grand Entrance ⇒ Formal Dining Room ⇒ Large Country Kitchen



140 LEAPING POWDER ROAD

8 Bedroom • 6.5 Bath • 11203 SF • \$3,500,000 • MLS# 202001819

Rare opportunity to own this 8-bedroom, 6.5-bathroom Spanish Pueblo Revival style home designed and built by Santa Fe icon Betty Stewart. Sited on 89+ acres of level land, this home offers privacy and magnificent wide mountain views. A grand two-story entrance and long gallery hallway lead into a dramatic great room with cathedral ceiling with wood beams, antique chestnut floors and unique fireplace with banco seats. There is a formal dining room with fireplace but also a second more intimate dining area with fireplace off the sizable country kitchen. Outstanding home for entertaining. The main floor has two bedrooms with ensuite baths plus a separate office or studio. On the second floor are 5 bedrooms with 3 baths including the master suite with fireplace and access to an outdoor patio with fireplace. Signature Stewart details abound with double adobe walls (first floor), elegantly sculpted window openings, white gauging plaster or soft colored Structo-Lite plaster walls, a mixture of brick and wood floors, and the use of stacked flagstone caps on top of the chimneys. Other features include mature landscaping, a wine cellar, 2-car garage, 2 stall horse barn, and a one bedroom guesthouse. Terrific location less than 10 miles from the Santa Fe Plaza, Museum Hill, shopping, restaurants, and hospitals.

DARLENE STREIT | 505.920.8001 | DSTREIT@DSTREIT.COM



B E D R O O M S

↪ Master Suite w/ Patio ↪ Brick & Wood Floors ↪ Wine Cellar



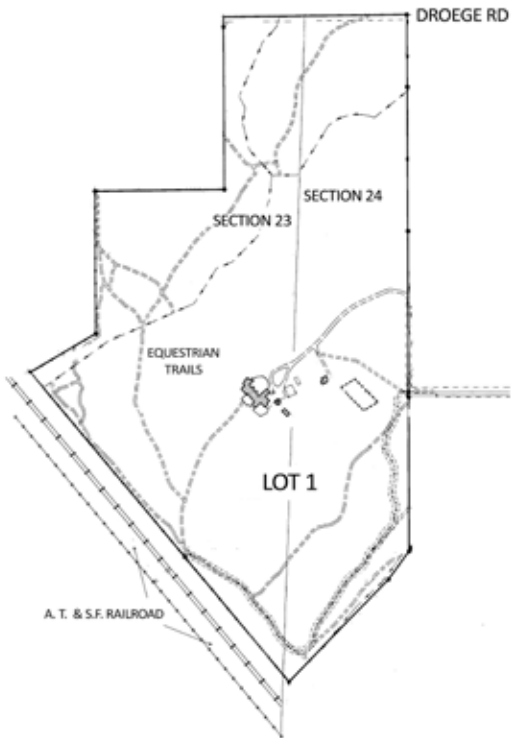
DETAILS

- 8 Bedrooms
- Baths: 6 Full, 2 Half
- Main House 10020 Sq. Ft.
- Guest House 1183 Sq. Ft.
- 89.81 Acres
- Built in 1991
- Adobe and possibly other materials, Frame, Stucco Construction *
- Flat, Membrane Roof
- 2 Garage Spaces
- 8 Fireplaces
- Wood, Brick Floors
- Gas Cooking
- Propane, Radiant In Floor Heating
- Septic
- Private Well
- Internet: DSL
- Barn/Stables
- Insulated Windows
- Landscaped
- Drip/Sprinkler System
- Security System
- Wine Cellar

**Buyer to Verify*

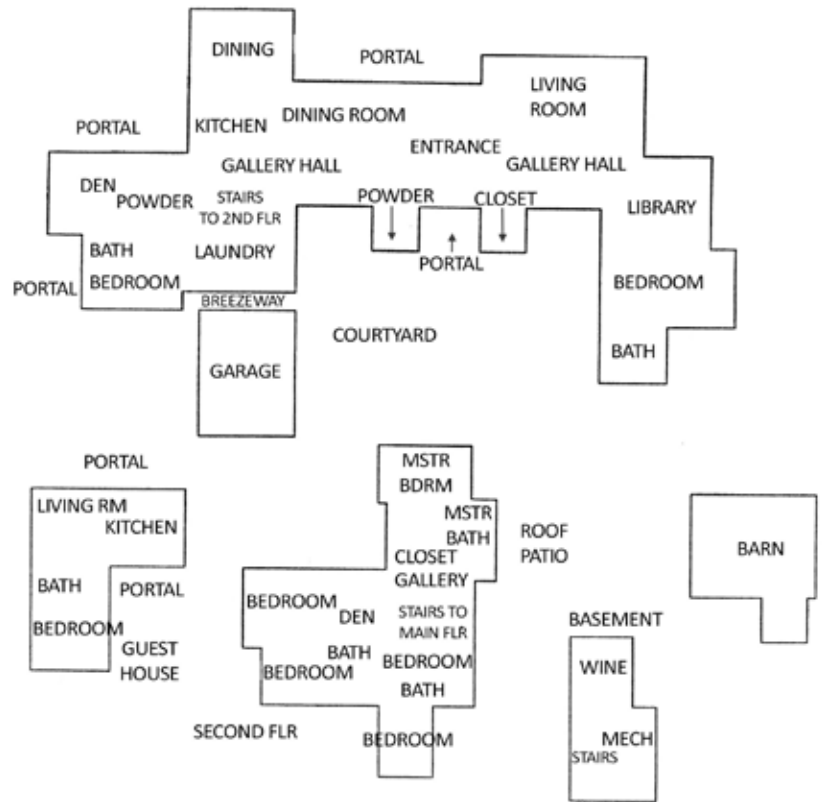
140 LEAPING POWDER RD - PLAT

This depiction is for illustration purposes and may not be entirely accurate



140 LEAPING POWDER RD - FLOOR PLAN

This depiction is for illustration purposes and may not be entirely accurate



DARLENE STREIT

SANTA FE REAL ESTATE PROPERTY



DARLENE STREIT
 505.920.8001 • dstreit@dstreit.com
 Office: 417 E. Palace Avenue
 Santa Fe NM 87501

SantaFeRealEstateProperty.com

DarleneStreit.com

SantaFeLuxuryHomesandLand.com



View
Listing
Online

© Sotheby's International Realty, Inc. All rights reserved. Sotheby's International Realty® is a registered trademark. This material is based upon information which we consider reliable but because it has been supplied by third parties, we cannot represent that it is accurate or complete and it should not be relied upon as such. This offering is subject to errors, omissions, changes including price or withdrawal without notice. If your property is listed with a real estate broker, please disregard. It is not our intention to solicit the offerings of other real estate brokers. We are happy to work with them and cooperate fully. Operated by Sotheby's International Realty, Inc. Real estate agents affiliated with Sotheby's International Realty, Inc. are independent contractor sales associates and are not employees of Sotheby's International Realty, Inc. Equal Housing Opportunity. Sotheby's International Realty, 326 Grant Ave, Santa Fe, NM 87501, 505-988-2533.

Sotheby's
INTERNATIONAL REALTY