

UNIT / 01



TYPE / H
3 BEDROOM / 2 BATHROOM

INTERIOR 1,150 SF | 107 M²
EXTERIOR 430 SF | 40 M²
TOTAL 1,580 SF | 147 M²



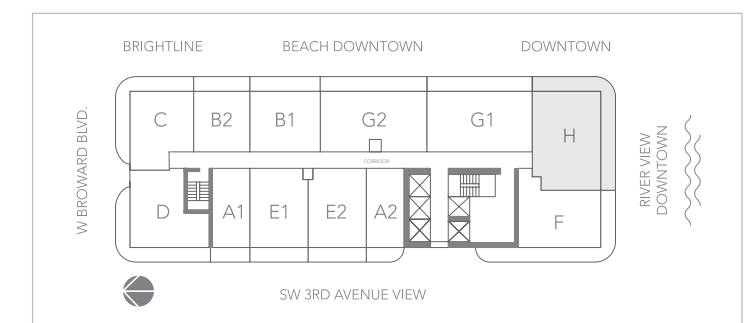
INQUIRE / (954) 210.4400
Sales@NatiivoFortLauderdale.com
NATIIVOFORTLAUDERDALE.COM

VISIT SALES LOUNGE /
606 E Broward Blvd.
Fort Lauderdale, Florida 33301

SITE ADDRESS /
200 West Broward Blvd.
Fort Lauderdale, Florida 33311

ORAL REPRESENTATIONS CANNOT BE RELIED UPON AS CORRECTLY STATING THE REPRESENTATIONS OF THE DEVELOPER. FOR CORRECT REPRESENTATIONS, MAKE REFERENCE TO THIS BROCHURE AND TO THE DOCUMENTS REQUIRED BY SECTION 718.503, FLORIDA STATUTES, TO BE FURNISHED BY A DEVELOPER TO A BUYER OR LESSEE.

This Condominium and project are being developed by 200 W Property Owner LLC, a Delaware limited liability company ("Developer"), which has a limited right to use the trademarked names and logos of Natiivo Direct LLC ("Natiivo®") pursuant to a license and marketing agreement with Natiivo® d/b/a Natiivo Hospitality. Any and all statements, disclosures and/or representations shall be deemed made by Developer and not by Natiivo® and you agree to look solely to Developer (and not to Natiivo® and/or any of its affiliates) with respect to any and all matters relating to the marketing and/or development of the Condominium and project and with respect to the sales of units in the Condominium and project. Stated dimensions are measured to the exterior boundaries of the exterior walls and the centerline of interior demising walls and in fact vary from the dimensions that would be determined by using the description and definition of the "Unit" set forth in the Declaration (which generally only includes the interior airspace between the perimeter walls and excludes interior structural components). For your reference, the area of the Unit, determined in accordance with those defined unit boundaries, is 1,580 SF. Note that measurements of rooms set forth on this floor plan are generally taken at the greatest points of each given room (as if the room were a perfect rectangle), without regard for any cutouts. Accordingly, the area of the actual room will typically be smaller than the product obtained by multiplying the stated length times width. All dimensions are approximate and may vary with actual construction, and all floor plans and development plans are subject to change. The sketches, renderings, graphic materials, plans, specifications, terms, conditions and statements contained in this brochure are proposed only, and the Developer reserves the right to modify, revise or withdraw any or all of same in its sole discretion and without prior notice. All improvements, designs and construction are subject to first obtaining the appropriate federal, state and local permits and approvals for same. All depictions of appliances, counters, soffits, floor coverings and other matters of detail, including, without limitation, items of finish and decoration, are conceptual only and are not necessarily included in each Unit. Consult your Agreement and the Prospectus for the items included with the Unit. Dimensions and square footage are approximate and may vary with actual construction.



UNIT / 02



TYPE / F
2 BEDROOM / 1 BATHROOM

INTERIOR 930 SF | 86 M²
EXTERIOR 460 SF | 43 M²
TOTAL 1,390 SF | 129 M²



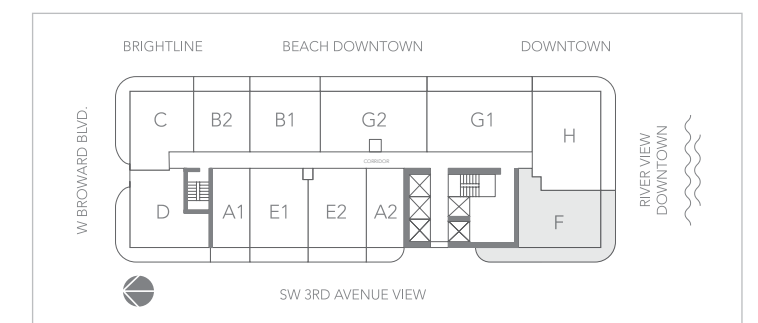
INQUIRE / (954) 210.4400
Sales@NatiivoFortLauderdale.com
NATIIVOFORTLAUDERDALE.COM

VISIT SALES LOUNGE /
606 E Broward Blvd.
Fort Lauderdale, Florida 33301

SITE ADDRESS /
200 West Broward Blvd.
Fort Lauderdale, Florida 33311

ORAL REPRESENTATIONS CANNOT BE RELIED UPON AS CORRECTLY STATING THE REPRESENTATIONS OF THE DEVELOPER. FOR CORRECT REPRESENTATIONS, MAKE REFERENCE TO THIS BROCHURE AND TO THE DOCUMENTS REQUIRED BY SECTION 718.503, FLORIDA STATUTES, TO BE FURNISHED BY A DEVELOPER TO A BUYER OR LESSEE.

This Condominium and project are being developed by 200 W Property Owner LLC, a Delaware limited liability company ("Developer"), which has a limited right to use the trademarked names and logos of Natiivo Direct LLC ("Natiivo®") pursuant to a license and marketing agreement with Natiivo® d/b/a Natiivo Hospitality. Any and all statements, disclosures and/or representations shall be deemed made by Developer and not by Natiivo® and you agree to look solely to Developer (and not to Natiivo® and/or any of its affiliates) with respect to any and all matters relating to the marketing and/or development of the Condominium and project and with respect to the sales of units in the Condominium and project. Stated dimensions are measured to the exterior boundaries of the exterior walls and the centerline of interior demising walls and in fact vary from the dimensions that would be determined by using the description and definition of the "Unit" set forth in the Declaration (which generally only includes the interior airspace between the perimeter walls and excludes interior structural components). For your reference, the area of the Unit, determined in accordance with those defined unit boundaries, is 1,390 SF. Note that measurements of rooms set forth on this floor plan are generally taken at the greatest points of each given room (as if the room were a perfect rectangle), without regard for any cutouts. Accordingly, the area of the actual room will typically be smaller than the product obtained by multiplying the stated length times width. All dimensions are approximate and may vary with actual construction, and all floor plans and development plans are subject to change. The sketches, renderings, graphic materials, plans, specifications, terms, conditions and statements contained in this brochure are proposed only, and the Developer reserves the right to modify, revise or withdraw any or all of same in its sole discretion and without prior notice. All improvements, designs and construction are subject to first obtaining the appropriate federal, state and local permits and approvals for same. All depictions of appliances, counters, soffits, floor coverings and other matters of detail, including, without limitation, items of finish and decoration, are conceptual only and are not necessarily included in each Unit. Consult your Agreement and the Prospectus for the items included with the Unit. Dimensions and square footage are approximate and may vary with actual construction.





UNIT / 03



TYPE / G1
2 BEDROOM + DEN / 2 BATHROOM

INTERIOR 1,110 SF | 103 M²
EXTERIOR 265 SF | 25 M²
TOTAL 1,375 SF | 128 M²

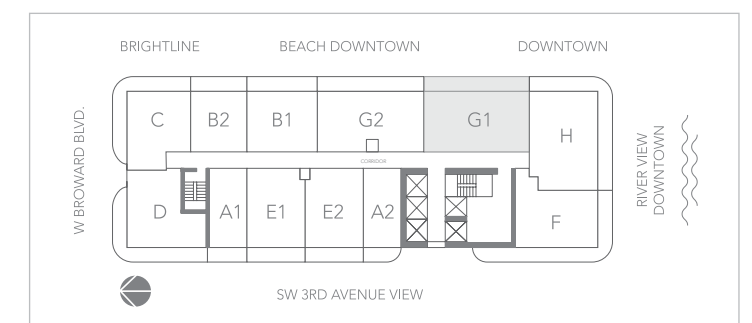
INQUIRE / (954) 210.4400
Sales@NatiivoFortLauderdale.com
NATIIVOFORTLAUDERDALE.COM

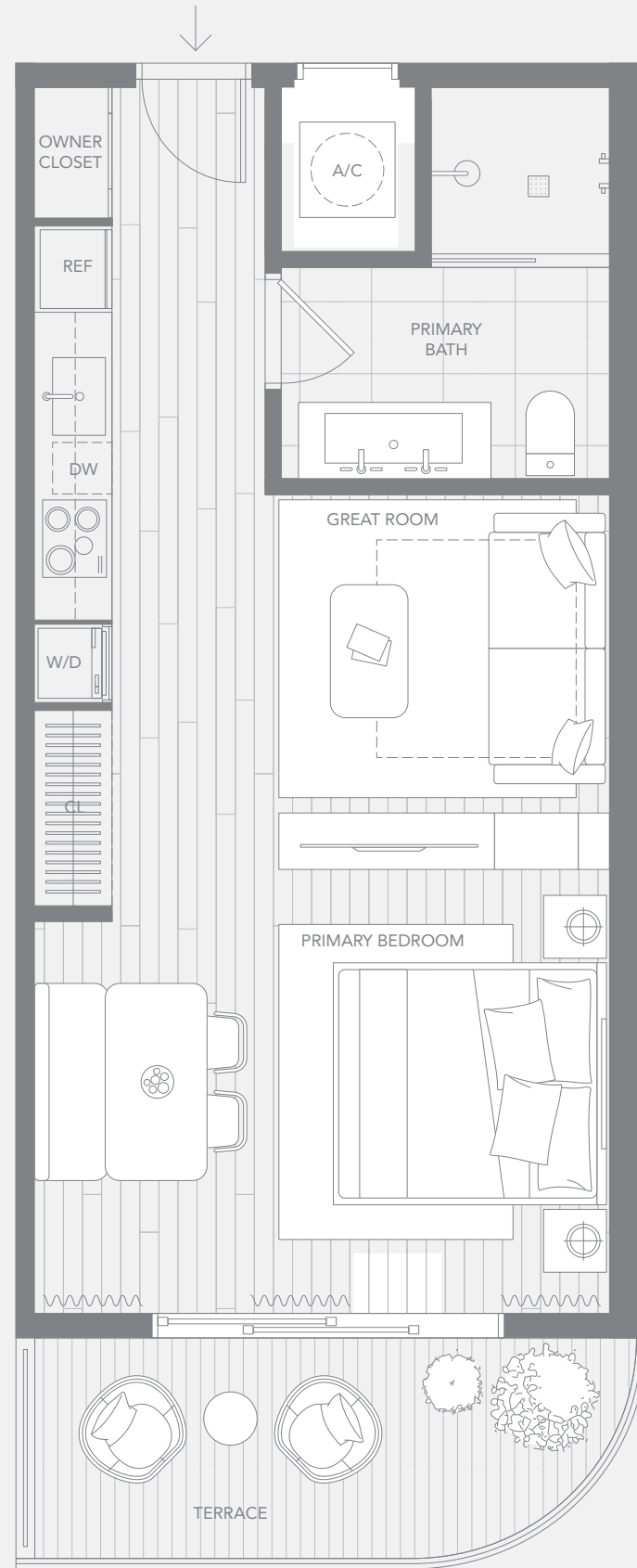
VISIT SALES LOUNGE /
606 E Broward Blvd.
Fort Lauderdale, Florida 33301

SITE ADDRESS /
200 West Broward Blvd.
Fort Lauderdale, Florida 33311

ORAL REPRESENTATIONS CANNOT BE RELIED UPON AS CORRECTLY STATING THE REPRESENTATIONS OF THE DEVELOPER. FOR CORRECT REPRESENTATIONS, MAKE REFERENCE TO THIS BROCHURE AND TO THE DOCUMENTS REQUIRED BY SECTION 718.503, FLORIDA STATUTES, TO BE FURNISHED BY A DEVELOPER TO A BUYER OR LESSEE.

This Condominium and project are being developed by 200 W Property Owner LLC, a Delaware limited liability company ("Developer"), which has a limited right to use the trademarked names and logos of Natiivo Direct LLC ("Natiivo®") pursuant to a license and marketing agreement with Natiivo® d/b/a Natiivo Hospitality. Any and all statements, disclosures and/or representations shall be deemed made by Developer and not by Natiivo® and you agree to look solely to Developer (and not to Natiivo® and/or any of its affiliates) with respect to any and all matters relating to the marketing and/or development of the Condominium and project and with respect to the sales of units in the Condominium and project. Stated dimensions are measured to the exterior boundaries of the exterior walls and the centerline of interior demising walls and in fact vary from the dimensions that would be determined by using the description and definition of the "Unit" set forth in the Declaration (which generally only includes the interior airspace between the perimeter walls and excludes interior structural components). For your reference, the area of the Unit, determined in accordance with those defined unit boundaries, is 1,375 SF. Note that measurements of rooms set forth on this floor plan are generally taken at the greatest points of each given room (as if the room were a perfect rectangle), without regard for any cutouts. Accordingly, the area of the actual room will typically be smaller than the product obtained by multiplying the stated length times width. All dimensions are approximate and may vary with actual construction, and all floor plans and development plans are subject to change. The sketches, renderings, graphic materials, plans, specifications, terms, conditions and statements contained in this brochure are proposed only, and the Developer reserves the right to modify, revise or withdraw any or all of same in its sole discretion and without prior notice. All improvements, designs and construction are subject to first obtaining the appropriate federal, state and local permits and approvals for same. All depictions of appliances, counters, soffits, floor coverings and other matters of detail, including, without limitation, items of finish and decoration, are conceptual only and are not necessarily included in each Unit. Consult your Agreement and the Prospectus for the items included with the Unit. Dimensions and square footage are approximate and may vary with actual construction.





NATIIVO® / FORT LAUDERDALE

UNIT / 04



TYPE / A2
STUDIO / 1 BATHROOM

INTERIOR 515 SF | 48 M²
EXTERIOR 90 SF | 8 M²
TOTAL 605 SF | 56 M²

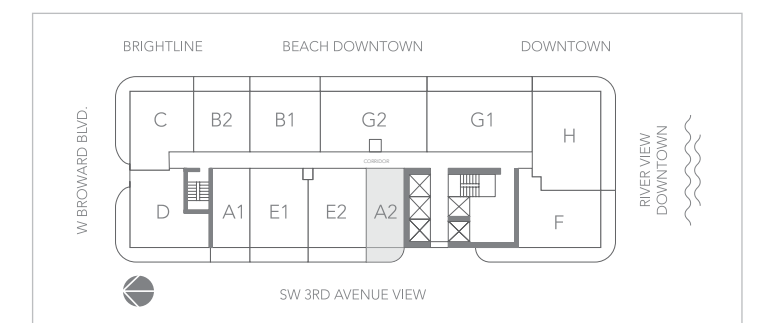
INQUIRE / (954) 210.4400
Sales@NatiivoFortLauderdale.com
NATIIVOFORTLAUDERDALE.COM

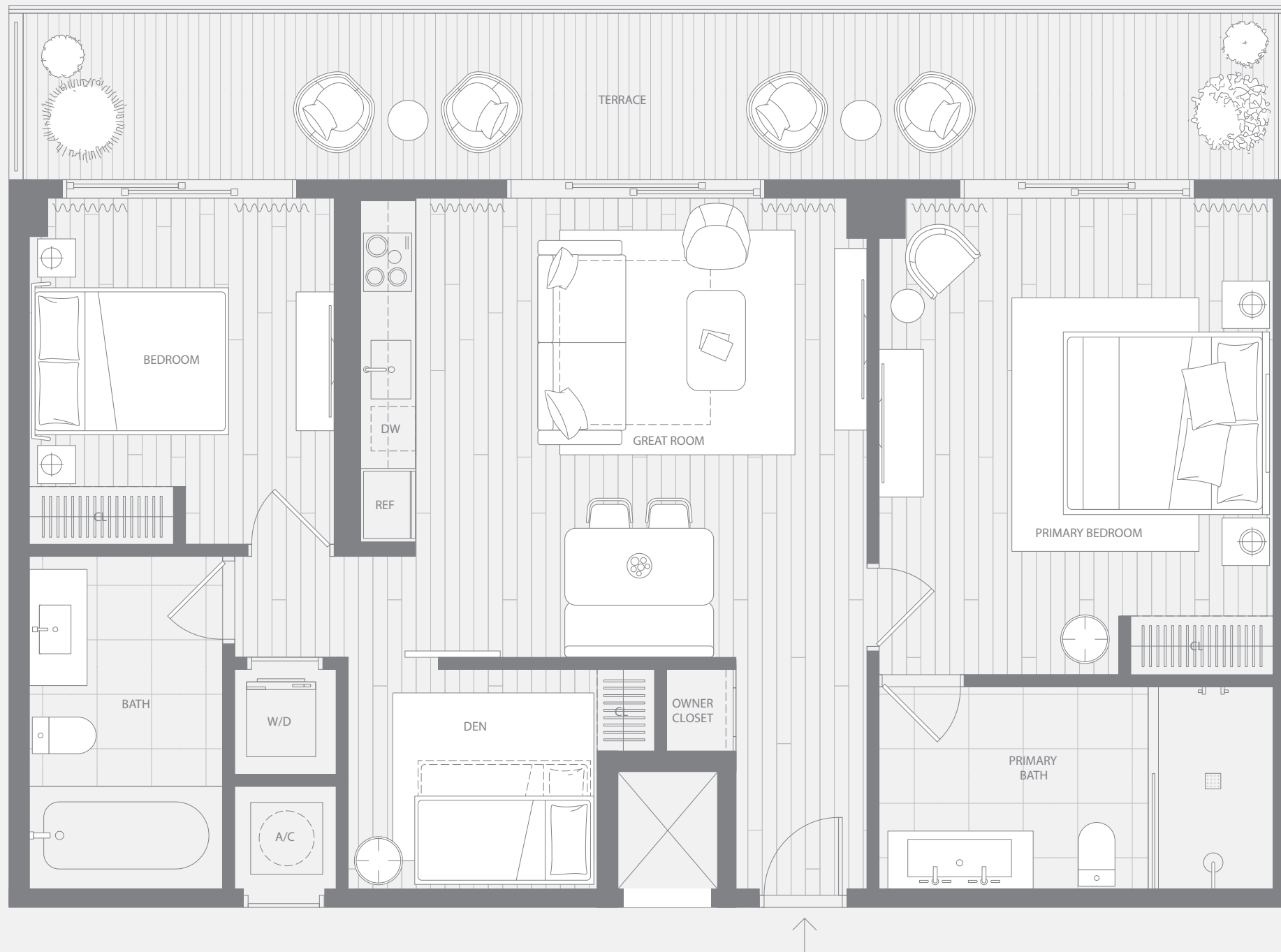
VISIT SALES LOUNGE /
606 E Broward Blvd.
Fort Lauderdale, Florida 33301

SITE ADDRESS /
200 West Broward Blvd.
Fort Lauderdale, Florida 33311

ORAL REPRESENTATIONS CANNOT BE RELIED UPON AS CORRECTLY STATING THE REPRESENTATIONS OF THE DEVELOPER. FOR CORRECT REPRESENTATIONS, MAKE REFERENCE TO THIS BROCHURE AND TO THE DOCUMENTS REQUIRED BY SECTION 718.503, FLORIDA STATUTES, TO BE FURNISHED BY A DEVELOPER TO A BUYER OR LESSEE.

This Condominium and project are being developed by 200 W Property Owner LLC, a Delaware limited liability company ("Developer"), which has a limited right to use the trademarked names and logos of Natiivo Direct LLC ("Natiivo®") pursuant to a license and marketing agreement with Natiivo® d/b/a Natiivo Hospitality. Any and all statements, disclosures and/or representations shall be deemed made by Developer and not by Natiivo® and you agree to look solely to Developer (and not to Natiivo® and/or any of its affiliates) with respect to any and all matters relating to the marketing and/or development of the Condominium and project and with respect to the sales of units in the Condominium and project. Stated dimensions are measured to the exterior boundaries of the exterior walls and the centerline of interior demising walls and in fact vary from the dimensions that would be determined by using the description and definition of the "Unit" set forth in the Declaration (which generally only includes the interior airspace between the perimeter walls and excludes interior structural components). For your reference, the area of the Unit, determined in accordance with those defined unit boundaries, is 605 SF. Note that measurements of rooms set forth on this floor plan are generally taken at the greatest points of each given room (as if the room were a perfect rectangle), without regard for any cutouts. Accordingly, the area of the actual room will typically be smaller than the product obtained by multiplying the stated length times width. All dimensions are approximate and may vary with actual construction, and all floor plans and development plans are subject to change. The sketches, renderings, graphic materials, plans, specifications, terms, conditions and statements contained in this brochure are proposed only, and the Developer reserves the right to modify, revise or withdraw any or all of same in its sole discretion and without prior notice. All improvements, designs and construction are subject to first obtaining the appropriate federal, state and local permits and approvals for same. All depictions of appliances, counters, soffits, floor coverings and other matters of detail, including, without limitation, items of finish and decoration, are conceptual only and are not necessarily included in each Unit. Consult your Agreement and the Prospectus for the items included with the Unit. Dimensions and square footage are approximate and may vary with actual construction.





UNIT / 05



TYPE / G2
2 BEDROOM + DEN / 2 BATHROOM

INTERIOR 1,095 SF | 102 M²
EXTERIOR 265 SF | 25 M²
TOTAL 1,360 SF | 127 M²

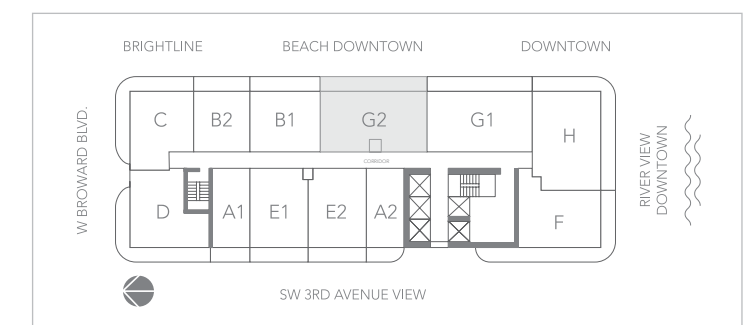
INQUIRE / (954) 210.4400
Sales@NatiivoFortLauderdale.com
NATIIVOFORTLAUDERDALE.COM

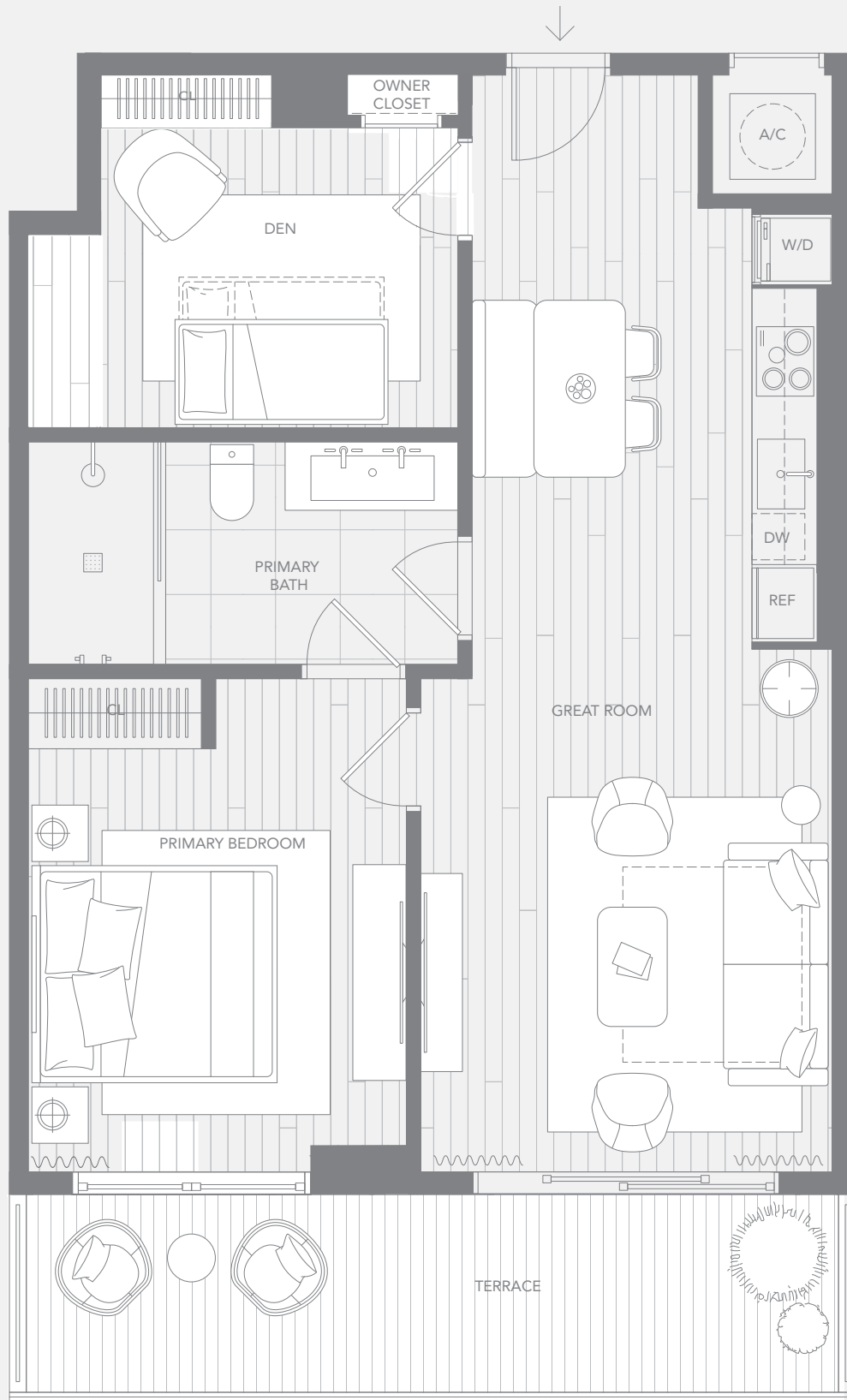
VISIT SALES LOUNGE /
606 E Broward Blvd.
Fort Lauderdale, Florida 33301

SITE ADDRESS /
200 West Broward Blvd.
Fort Lauderdale, Florida 33311

ORAL REPRESENTATIONS CANNOT BE RELIED UPON AS CORRECTLY STATING THE REPRESENTATIONS OF THE DEVELOPER. FOR CORRECT REPRESENTATIONS, MAKE REFERENCE TO THIS BROCHURE AND TO THE DOCUMENTS REQUIRED BY SECTION 718.503, FLORIDA STATUTES, TO BE FURNISHED BY A DEVELOPER TO A BUYER OR LESSEE.

This Condominium and project are being developed by 200 W Property Owner LLC, a Delaware limited liability company ("Developer"), which has a limited right to use the trademarked names and logos of Natiivo Direct LLC ("Natiivo®") pursuant to a license and marketing agreement with Natiivo® d/b/a Natiivo Hospitality. Any and all statements, disclosures and/or representations shall be deemed made by Developer and not by Natiivo® and you agree to look solely to Developer (and not to Natiivo® and/or any of its affiliates) with respect to any and all matters relating to the marketing and/or development of the Condominium and project and with respect to the sales of units in the Condominium and project. Stated dimensions are measured to the exterior boundaries of the exterior walls and the centerline of interior demising walls and in fact vary from the dimensions that would be determined by using the description and definition of the "Unit" set forth in the Declaration (which generally only includes the interior airspace between the perimeter walls and excludes interior structural components). For your reference, the area of the Unit, determined in accordance with those defined unit boundaries, is 1,360 SF. Note that measurements of rooms set forth on this floor plan are generally taken at the greatest points of each given room (as if the room were a perfect rectangle), without regard for any cutouts. Accordingly, the area of the actual room will typically be smaller than the product obtained by multiplying the stated length times width. All dimensions are approximate and may vary with actual construction, and all floor plans and development plans are subject to change. The sketches, renderings, graphic materials, plans, specifications, terms, conditions and statements contained in this brochure are proposed only, and the Developer reserves the right to modify, revise or withdraw any or all of same in its sole discretion and without prior notice. All improvements, designs and construction are subject to first obtaining the appropriate federal, state and local permits and approvals for same. All depictions of appliances, counters, soffits, floor coverings and other matters of detail, including, without limitation, items of finish and decoration, are conceptual only and are not necessarily included in each Unit. Consult your Agreement and the Prospectus for the items included with the Unit. Dimensions and square footage are approximate and may vary with actual construction.





NATIIVO® / FORT LAUDERDALE

UNIT / 06



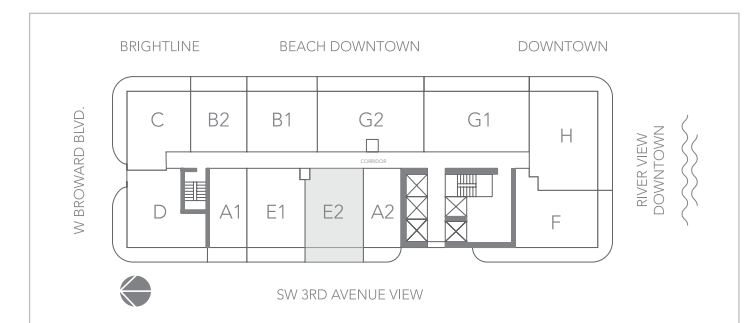
TYPE / E2
1 BEDROOM + DEN / 1 BATHROOM

INTERIOR 800 SF | 74 M²
EXTERIOR 145 SF | 14 M²
TOTAL 950 SF | 88 M²

INQUIRE / (954) 210.4400
Sales@NatiivoFortLauderdale.com
NATIIVOFORTLAUDERDALE.COM

VISIT SALES LOUNGE /
606 E Broward Blvd.
Fort Lauderdale, Florida 33301

SITE ADDRESS /
200 West Broward Blvd.
Fort Lauderdale, Florida 33311



ORAL REPRESENTATIONS CANNOT BE RELIED UPON AS CORRECTLY STATING THE REPRESENTATIONS OF THE DEVELOPER. FOR CORRECT REPRESENTATIONS, MAKE REFERENCE TO THIS BROCHURE AND TO THE DOCUMENTS REQUIRED BY SECTION 718.503, FLORIDA STATUTES, TO BE FURNISHED BY A DEVELOPER TO A BUYER OR LESSEE.

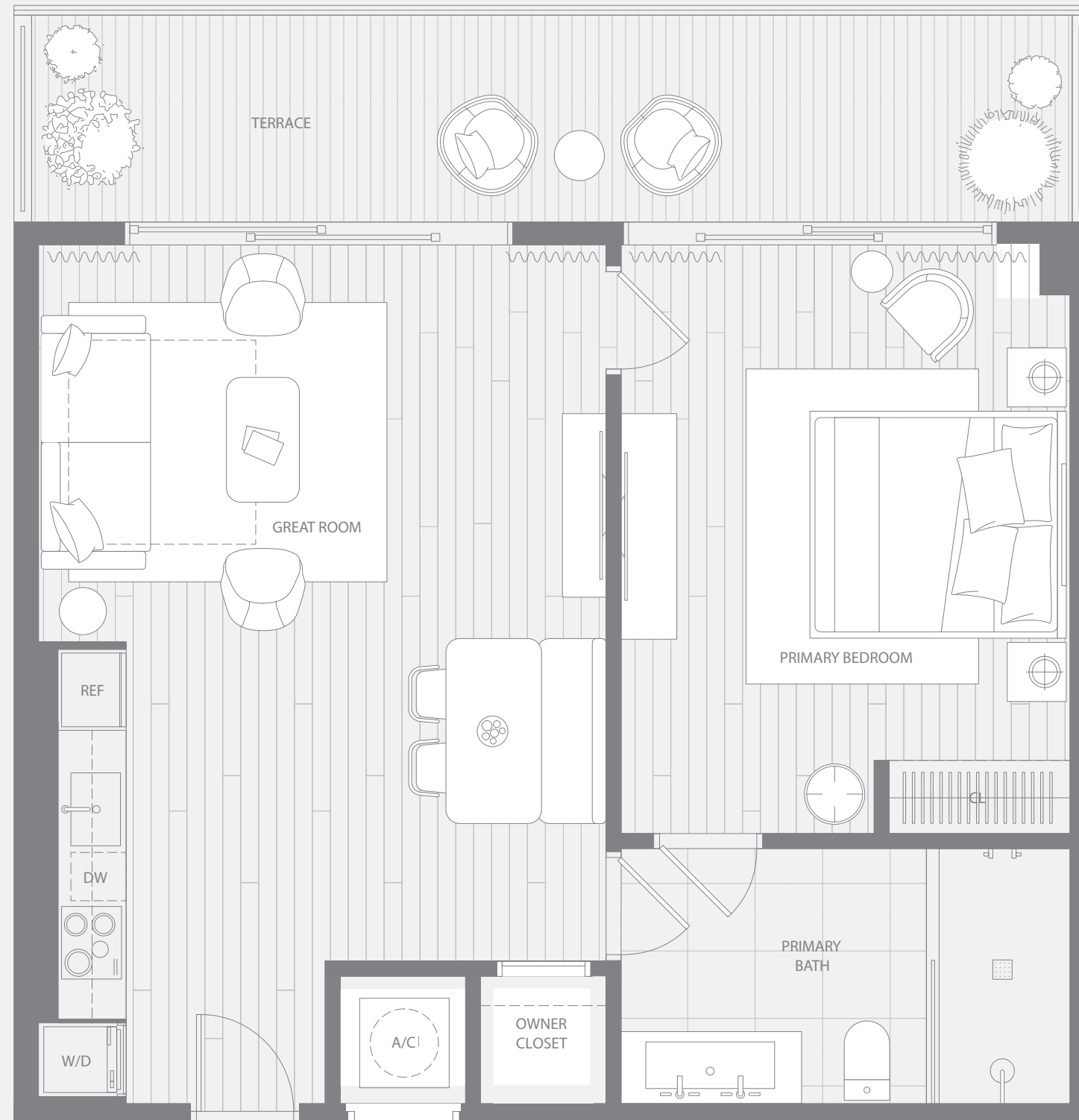
This Condominium and project are being developed by 200 W Property Owner LLC, a Delaware limited liability company ("Developer"), which has a limited right to use the trademarked names and logos of Natiivo Direct LLC ("Natiivo®") pursuant to a license and marketing agreement with Natiivo® d/b/a Natiivo Hospitality. Any and all statements, disclosures and/or representations shall be deemed made by Developer and not by Natiivo® and you agree to look solely to Developer (and not to Natiivo® and/or any of its affiliates) with respect to any and all matters relating to the marketing and/or development of the Condominium and project and with respect to the sales of units in the Condominium and project. Stated dimensions are measured to the exterior boundaries of the exterior walls and the centerline of interior demising walls and in fact vary from the dimensions that would be determined by using the description and definition of the "Unit" set forth in the Declaration (which generally only includes the interior airspace between the perimeter walls and excludes interior structural components). For your reference, the area of the Unit, determined in accordance with those defined unit boundaries, is 950 SF. Note that measurements of rooms set forth on this floor plan are generally taken at the greatest points of each given room (as if the room were a perfect rectangle), without regard for any cutouts. Accordingly, the area of the actual room will typically be smaller than the product obtained by multiplying the stated length times width. All dimensions are approximate and may vary with actual construction, and all floor plans and development plans are subject to change. The sketches, renderings, graphic materials, plans, specifications, terms, conditions and statements contained in this brochure are proposed only, and the Developer reserves the right to modify, revise or withdraw any or all of same in its sole discretion and without prior notice. All improvements, designs and construction are subject to first obtaining the appropriate federal, state and local permits and approvals for same. All depictions of appliances, counters, soffits, floor coverings and other matters of detail, including, without limitation, items of finish and decoration, are conceptual only and are not necessarily included in each Unit. Consult your Agreement and the Prospectus for the items included with the Unit. Dimensions and square footage are approximate and may vary with actual construction.

UNIT / 07



TYPE / B1
1 BEDROOM / 1 BATHROOM

INTERIOR 745 SF | 69 M²
EXTERIOR 175 SF | 16 M²
TOTAL 920 SF | 85 M²



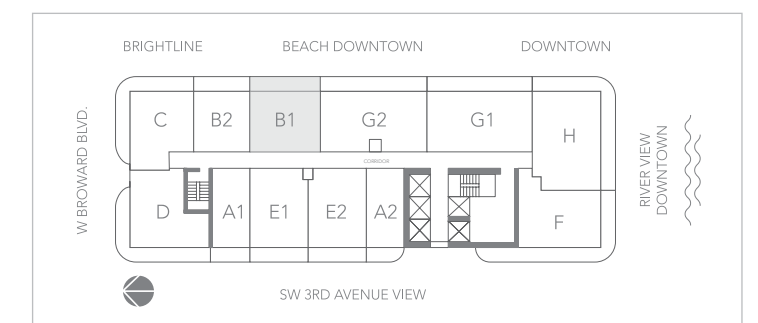
ORAL REPRESENTATIONS CANNOT BE RELIED UPON AS CORRECTLY STATING THE REPRESENTATIONS OF THE DEVELOPER. FOR CORRECT REPRESENTATIONS, MAKE REFERENCE TO THIS BROCHURE AND TO THE DOCUMENTS REQUIRED BY SECTION 718.503, FLORIDA STATUTES, TO BE FURNISHED BY A DEVELOPER TO A BUYER OR LESSEE.

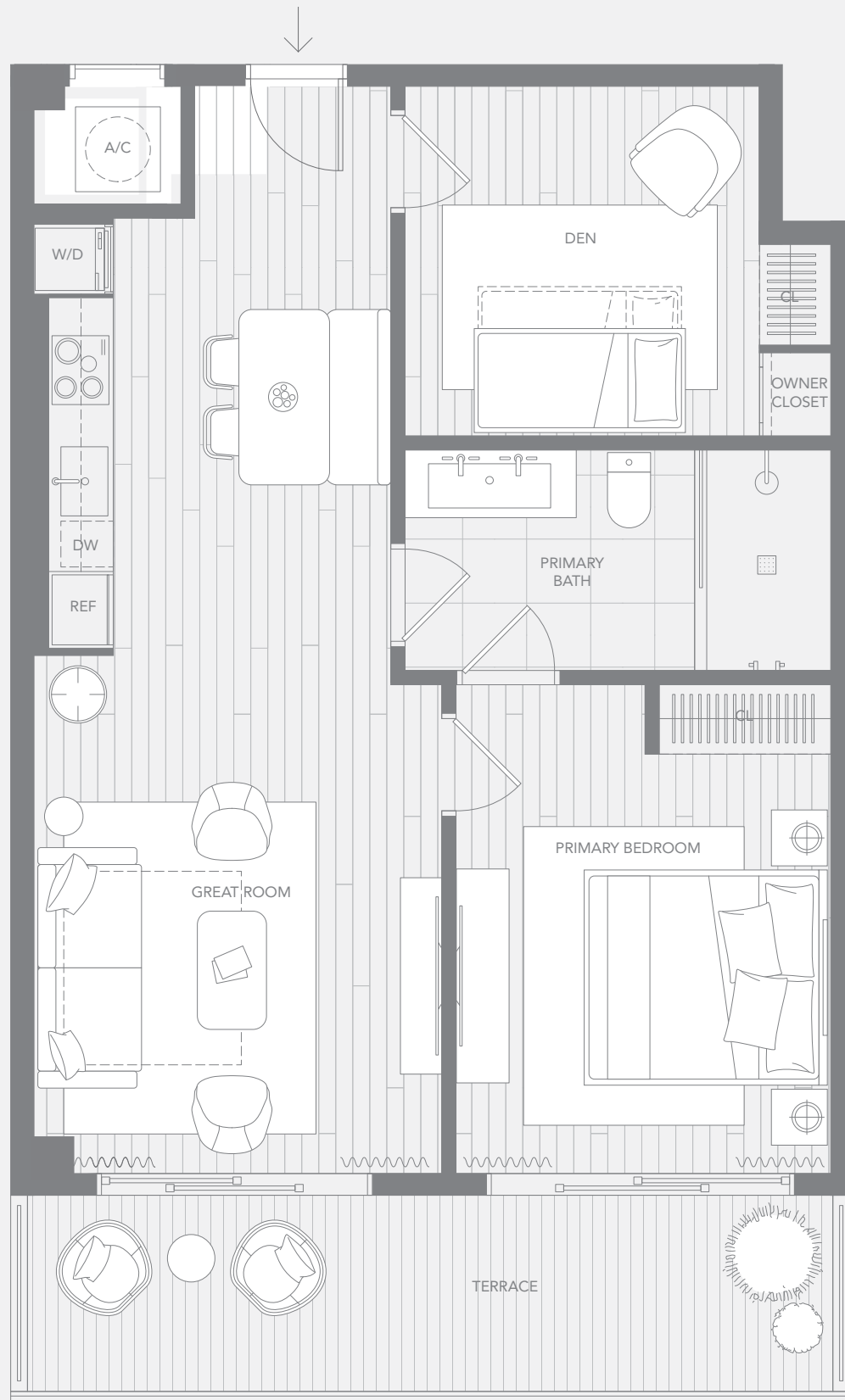
This Condominium and project are being developed by 200 W Property Owner LLC, a Delaware limited liability company ("Developer"), which has a limited right to use the trademarked names and logos of Natiivo Direct LLC ("Natiivo®") pursuant to a license and marketing agreement with Natiivo® d/b/a Natiivo Hospitality. Any and all statements, disclosures and/or representations shall be deemed made by Developer and not by Natiivo® and you agree to look solely to Developer (and not to Natiivo® and/or any of its affiliates) with respect to any and all matters relating to the marketing and/or development of the Condominium and project and with respect to the sales of units in the Condominium and project. Stated dimensions are measured to the exterior boundaries of the exterior walls and the centerline of interior demising walls and in fact vary from the dimensions that would be determined by using the description and definition of the "Unit" set forth in the Declaration (which generally only includes the interior airspace between the perimeter walls and excludes interior structural components). For your reference, the area of the Unit, determined in accordance with those defined unit boundaries, is 920 SF. Note that measurements of rooms set forth on this floor plan are generally taken at the greatest points of each given room (as if the room were a perfect rectangle), without regard for any cutouts. Accordingly, the area of the actual room will typically be smaller than the product obtained by multiplying the stated length times width. All dimensions are approximate and may vary with actual construction, and all floor plans and development plans are subject to change. The sketches, renderings, graphic materials, plans, specifications, terms, conditions and statements contained in this brochure are proposed only, and the Developer reserves the right to modify, revise or withdraw any or all of same in its sole discretion and without prior notice. All improvements, designs and construction are subject to first obtaining the appropriate federal, state and local permits and approvals for same. All depictions of appliances, counters, soffits, floor coverings and other matters of detail, including, without limitation, items of finish and decoration, are conceptual only and are not necessarily included in each Unit. Consult your Agreement and the Prospectus for the items included with the Unit. Dimensions and square footage are approximate and may vary with actual construction.

INQUIRE / (954) 210.4400
Sales@NatiivoFortLauderdale.com
NATIIVOFORTLAUDERDALE.COM

VISIT SALES LOUNGE /
606 E Broward Blvd.
Fort Lauderdale, Florida 33301

SITE ADDRESS /
200 West Broward Blvd.
Fort Lauderdale, Florida 33311





NATIIVO® / FORT LAUDERDALE

UNIT / 08



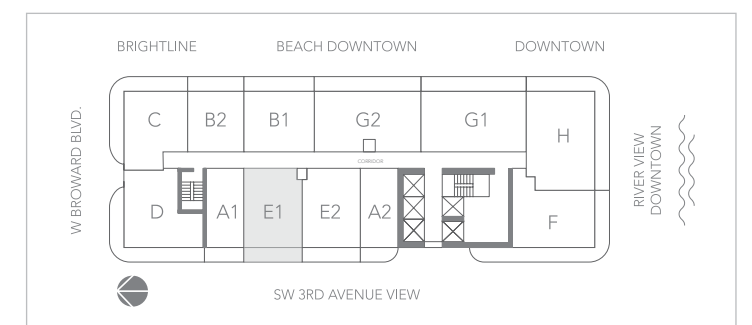
TYPE / E1
1 BEDROOM + DEN / 1 BATHROOM

INTERIOR 800 SF | 74 M²
EXTERIOR 140 SF | 13 M²
TOTAL 940 SF | 87 M²

INQUIRE / (954) 210.4400
Sales@NatiivoFortLauderdale.com
NATIIVOFORTLAUDERDALE.COM

VISIT SALES LOUNGE /
606 E Broward Blvd.
Fort Lauderdale, Florida 33301

SITE ADDRESS /
200 West Broward Blvd.
Fort Lauderdale, Florida 33311



ORAL REPRESENTATIONS CANNOT BE RELIED UPON AS CORRECTLY STATING THE REPRESENTATIONS OF THE DEVELOPER. FOR CORRECT REPRESENTATIONS, MAKE REFERENCE TO THIS BROCHURE AND TO THE DOCUMENTS REQUIRED BY SECTION 718.503, FLORIDA STATUTES, TO BE FURNISHED BY A DEVELOPER TO A BUYER OR LESSEE.

This Condominium and project are being developed by 200 W Property Owner LLC, a Delaware limited liability company ("Developer"), which has a limited right to use the trademarked names and logos of Natiivo Direct LLC ("Natiivo®") pursuant to a license and marketing agreement with Natiivo® d/b/a Natiivo Hospitality. Any and all statements, disclosures and/or representations shall be deemed made by Developer and not by Natiivo® and you agree to look solely to Developer (and not to Natiivo® and/or any of its affiliates) with respect to any and all matters relating to the marketing and/or development of the Condominium and project and with respect to the sales of units in the Condominium and project. Stated dimensions are measured to the exterior boundaries of the exterior walls and the centerline of interior demising walls and in fact vary from the dimensions that would be determined by using the description and definition of the "Unit" set forth in the Declaration (which generally only includes the interior airspace between the perimeter walls and excludes interior structural components). For your reference, the area of the Unit, determined in accordance with those defined unit boundaries, is 940 SF. Note that measurements of rooms set forth on this floor plan are generally taken at the greatest points of each given room (as if the room were a perfect rectangle), without regard for any cutouts. Accordingly, the area of the actual room will typically be smaller than the product obtained by multiplying the stated length times width. All dimensions are approximate and may vary with actual construction, and all floor plans and development plans are subject to change. The sketches, renderings, graphic materials, plans, specifications, terms, conditions and statements contained in this brochure are proposed only, and the Developer reserves the right to modify, revise or withdraw any or all of same in its sole discretion and without prior notice. All improvements, designs and construction are subject to first obtaining the appropriate federal, state and local permits and approvals for same. All depictions of appliances, counters, soffits, floor coverings and other matters of detail, including, without limitation, items of finish and decoration, are conceptual only and are not necessarily included in each Unit. Consult your Agreement and the Prospectus for the items included with the Unit. Dimensions and square footage are approximate and may vary with actual construction.

UNIT / 09



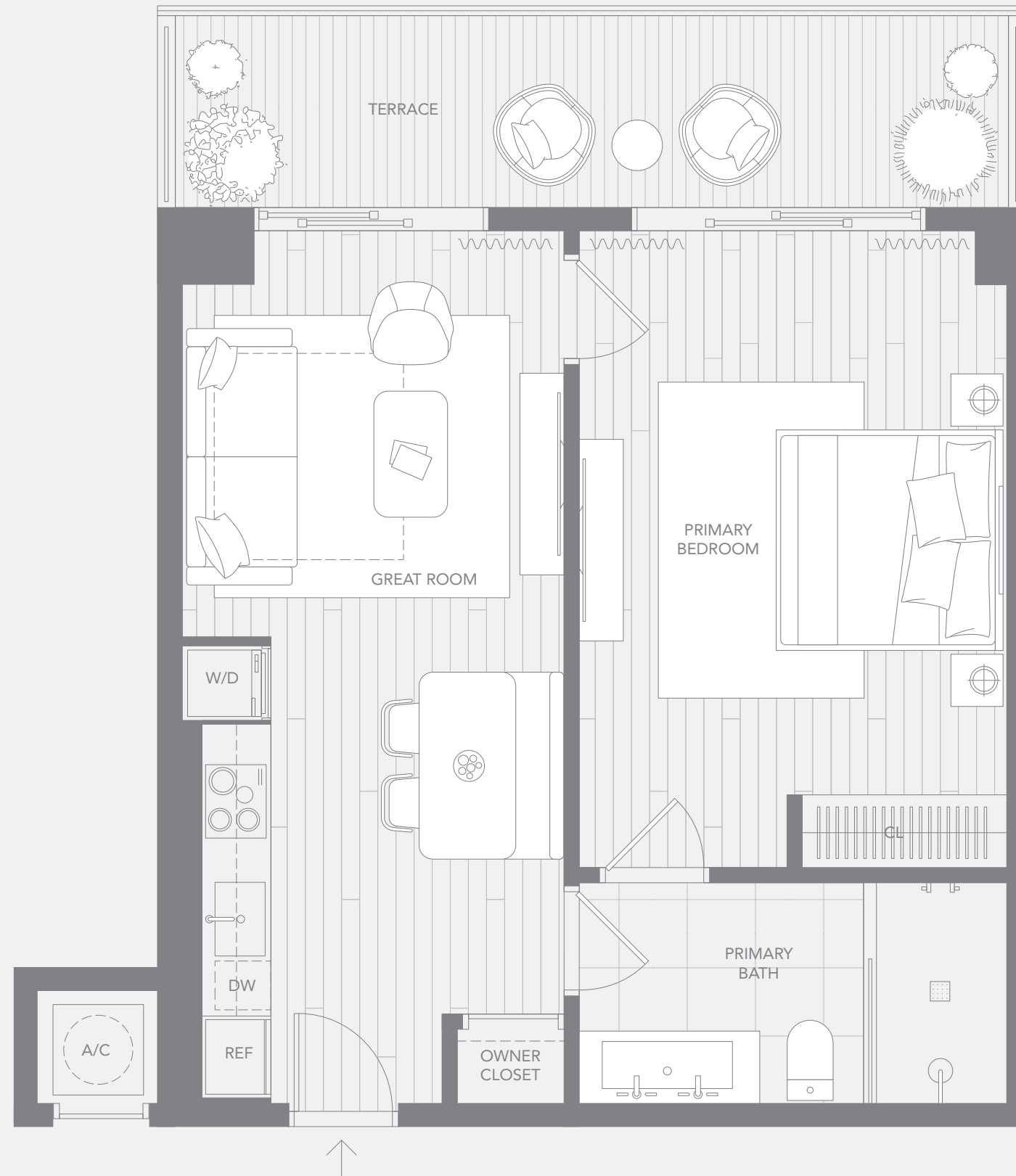
TYPE / B2
1 BEDROOM / 1 BATHROOM

INTERIOR 610 SF | 57 M²
EXTERIOR 140 SF | 13 M²
TOTAL 750 SF | 70 M²

INQUIRE / (954) 210.4400
Sales@NatiivoFortLauderdale.com
NATIIVOFORTLAUDERDALE.COM

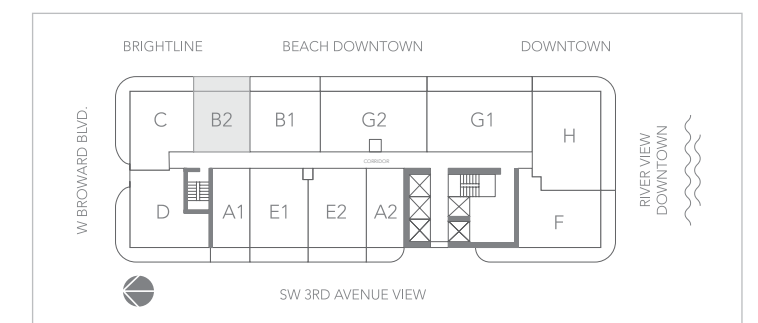
VISIT SALES LOUNGE /
606 E Broward Blvd.
Fort Lauderdale, Florida 33301

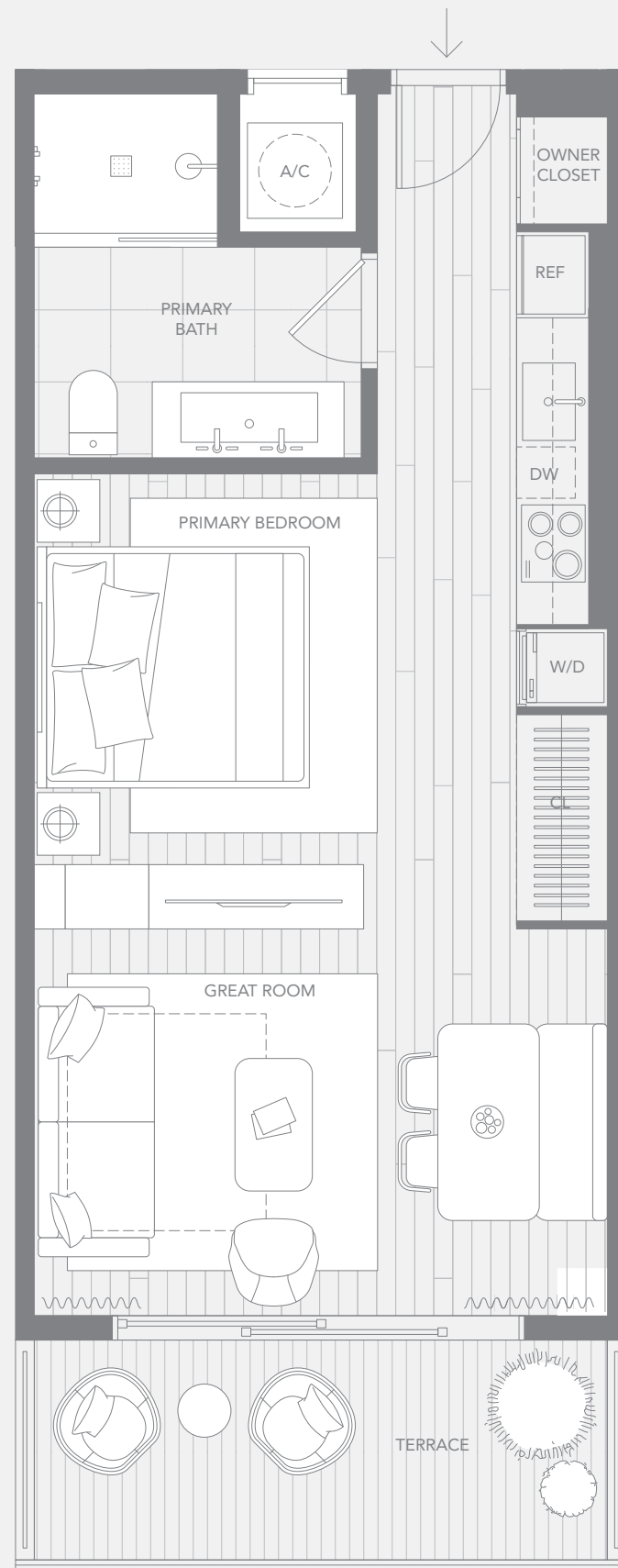
SITE ADDRESS /
200 West Broward Blvd.
Fort Lauderdale, Florida 33311



ORAL REPRESENTATIONS CANNOT BE RELIED UPON AS CORRECTLY STATING THE REPRESENTATIONS OF THE DEVELOPER. FOR CORRECT REPRESENTATIONS, MAKE REFERENCE TO THIS BROCHURE AND TO THE DOCUMENTS REQUIRED BY SECTION 718.503, FLORIDA STATUTES, TO BE FURNISHED BY A DEVELOPER TO A BUYER OR LESSEE.

This Condominium and project are being developed by 200 W Property Owner LLC, a Delaware limited liability company ("Developer"), which has a limited right to use the trademarked names and logos of Natiivo Direct LLC ("Natiivo®") pursuant to a license and marketing agreement with Natiivo® d/b/a Natiivo Hospitality. Any and all statements, disclosures and/or representations shall be deemed made by Developer and not by Natiivo® and you agree to look solely to Developer (and not to Natiivo® and/or any of its affiliates) with respect to any and all matters relating to the marketing and/or development of the Condominium and project and with respect to the sales of units in the Condominium and project. Stated dimensions are measured to the exterior boundaries of the exterior walls and the centerline of interior demising walls and in fact vary from the dimensions that would be determined by using the description and definition of the "Unit" set forth in the Declaration (which generally only includes the interior airspace between the perimeter walls and excludes interior structural components). For your reference, the area of the Unit, determined in accordance with those defined unit boundaries, is 750 SF. Note that measurements of rooms set forth on this floor plan are generally taken at the greatest points of each given room (as if the room were a perfect rectangle), without regard for any cutouts. Accordingly, the area of the actual room will typically be smaller than the product obtained by multiplying the stated length times width. All dimensions are approximate and may vary with actual construction, and all floor plans and development plans are subject to change. The sketches, renderings, graphic materials, plans, specifications, terms, conditions and statements contained in this brochure are proposed only, and the Developer reserves the right to modify, revise or withdraw any or all of same in its sole discretion and without prior notice. All improvements, designs and construction are subject to first obtaining the appropriate federal, state and local permits and approvals for same. All depictions of appliances, counters, soffits, floor coverings and other matters of detail, including, without limitation, items of finish and decoration, are conceptual only and are not necessarily included in each Unit. Consult your Agreement and the Prospectus for the items included with the Unit. Dimensions and square footage are approximate and may vary with actual construction.





NATIIVO® / FORT LAUDERDALE

UNIT / 10



TYPE / A1
STUDIO / 1 BATHROOM

INTERIOR 515 SF | 48 M²
EXTERIOR 95 SF | 9 M²
TOTAL 610 SF | 57 M²

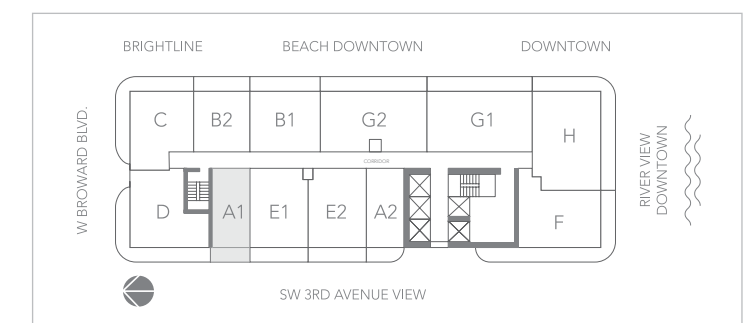
INQUIRE / (954) 210.4400
Sales@NatiivoFortLauderdale.com
NATIIVOFORTLAUDERDALE.COM

VISIT SALES LOUNGE /
606 E Broward Blvd.
Fort Lauderdale, Florida 33301

SITE ADDRESS /
200 West Broward Blvd.
Fort Lauderdale, Florida 33311

ORAL REPRESENTATIONS CANNOT BE RELIED UPON AS CORRECTLY STATING THE REPRESENTATIONS OF THE DEVELOPER. FOR CORRECT REPRESENTATIONS, MAKE REFERENCE TO THIS BROCHURE AND TO THE DOCUMENTS REQUIRED BY SECTION 718.503, FLORIDA STATUTES, TO BE FURNISHED BY A DEVELOPER TO A BUYER OR LESSEE.

This Condominium and project are being developed by 200 W Property Owner LLC, a Delaware limited liability company ("Developer"), which has a limited right to use the trademarked names and logos of Natiivo Direct LLC ("Natiivo®") pursuant to a license and marketing agreement with Natiivo® d/b/a Natiivo Hospitality. Any and all statements, disclosures and/or representations shall be deemed made by Developer and not by Natiivo® and you agree to look solely to Developer (and not to Natiivo® and/or any of its affiliates) with respect to any and all matters relating to the marketing and/or development of the Condominium and project and with respect to the sales of units in the Condominium and project. Stated dimensions are measured to the exterior boundaries of the exterior walls and the centerline of interior demising walls and in fact vary from the dimensions that would be determined by using the description and definition of the "Unit" set forth in the Declaration (which generally only includes the interior airspace between the perimeter walls and excludes interior structural components). For your reference, the area of the Unit, determined in accordance with those defined unit boundaries, is 610 SF. Note that measurements of rooms set forth on this floor plan are generally taken at the greatest points of each given room (as if the room were a perfect rectangle), without regard for any cutouts. Accordingly, the area of the actual room will typically be smaller than the product obtained by multiplying the stated length times width. All dimensions are approximate and may vary with actual construction, and all floor plans and development plans are subject to change. The sketches, renderings, graphic materials, plans, specifications, terms, conditions and statements contained in this brochure are proposed only, and the Developer reserves the right to modify, revise or withdraw any or all of same in its sole discretion and without prior notice. All improvements, designs and construction are subject to first obtaining the appropriate federal, state and local permits and approvals for same. All depictions of appliances, counters, soffits, floor coverings and other matters of detail, including, without limitation, items of finish and decoration, are conceptual only and are not necessarily included in each Unit. Consult your Agreement and the Prospectus for the items included with the Unit. Dimensions and square footage are approximate and may vary with actual construction.

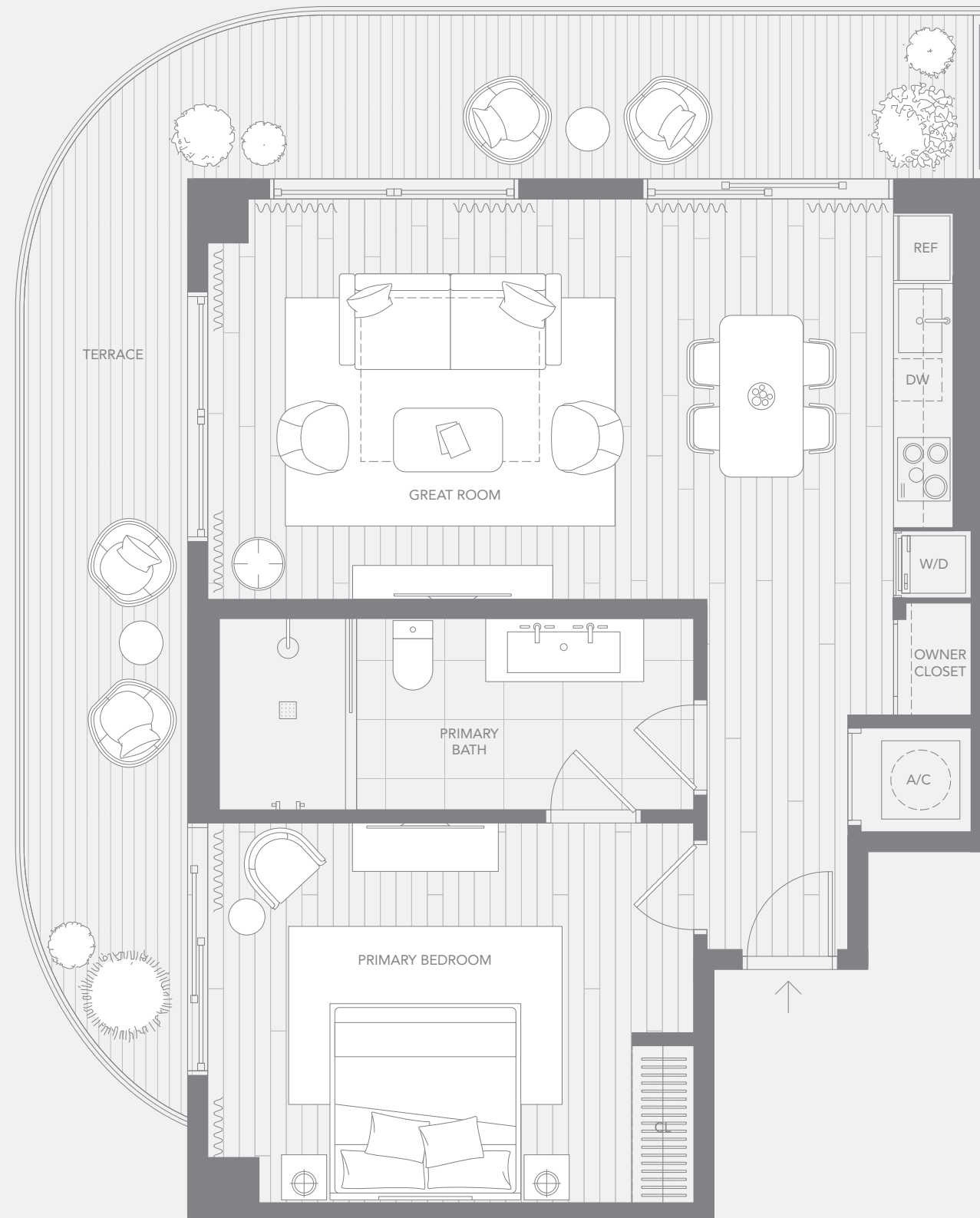


UNIT / 11



TYPE / C
1 BEDROOM / 1 BATHROOM

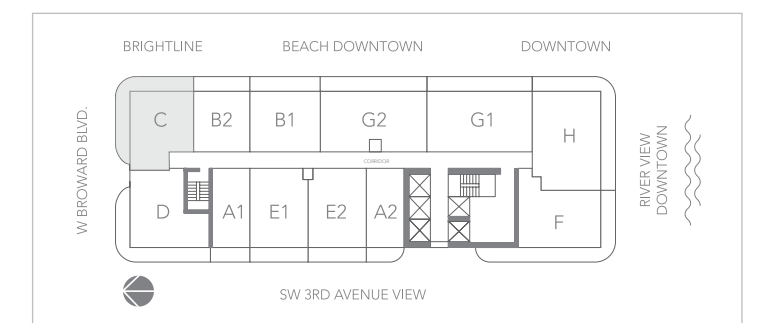
INTERIOR 755 SF | 70 M²
EXTERIOR 355 SF | 33 M²
TOTAL 1,100 SF | 102 M²



INQUIRE / (954) 210.4400
Sales@NatiivoFortLauderdale.com
NATIIVOFORTLAUDERDALE.COM

VISIT SALES LOUNGE /
606 E Broward Blvd.
Fort Lauderdale, Florida 33301

SITE ADDRESS /
200 West Broward Blvd.
Fort Lauderdale, Florida 33311



ORAL REPRESENTATIONS CANNOT BE RELIED UPON AS CORRECTLY STATING THE REPRESENTATIONS OF THE DEVELOPER. FOR CORRECT REPRESENTATIONS, MAKE REFERENCE TO THIS BROCHURE AND TO THE DOCUMENTS REQUIRED BY SECTION 718.503, FLORIDA STATUTES, TO BE FURNISHED BY A DEVELOPER TO A BUYER OR LESSEE.

This Condominium and project are being developed by 200 W Property Owner LLC, a Delaware limited liability company ("Developer"), which has a limited right to use the trademarked names and logos of Natiivo Direct LLC ("Natiivo®") pursuant to a license and marketing agreement with Natiivo® d/b/a Natiivo Hospitality. Any and all statements, disclosures and/or representations shall be deemed made by Developer and not by Natiivo® and you agree to look solely to Developer (and not to Natiivo® and/or any of its affiliates) with respect to any and all matters relating to the marketing and/or development of the Condominium and project and with respect to the sales of units in the Condominium and project. Stated dimensions are measured to the exterior boundaries of the exterior walls and the centerline of interior demising walls and in fact vary from the dimensions that would be determined by using the description and definition of the "Unit" set forth in the Declaration (which generally only includes the interior airspace between the perimeter walls and excludes interior structural components). For your reference, the area of the Unit, determined in accordance with those defined unit boundaries, is 1,110 SF. Note that measurements of rooms set forth on this floor plan are generally taken at the greatest points of each given room (as if the room were a perfect rectangle), without regard for any cutouts. Accordingly, the area of the actual room will typically be smaller than the product obtained by multiplying the stated length times width. All dimensions are approximate and may vary with actual construction, and all floor plans and development plans are subject to change. The sketches, renderings, graphic materials, plans, specifications, terms, conditions and statements contained in this brochure are proposed only, and the Developer reserves the right to modify, revise or withdraw any or all of same in its sole discretion and without prior notice. All improvements, designs and construction are subject to first obtaining the appropriate federal, state and local permits and approvals for same. All depictions of appliances, counters, soffits, floor coverings and other matters of detail, including, without limitation, items of finish and decoration, are conceptual only and are not necessarily included in each Unit. Consult your Agreement and the Prospectus for the items included with the Unit. Dimensions and square footage are approximate and may vary with actual construction.

UNIT / 12



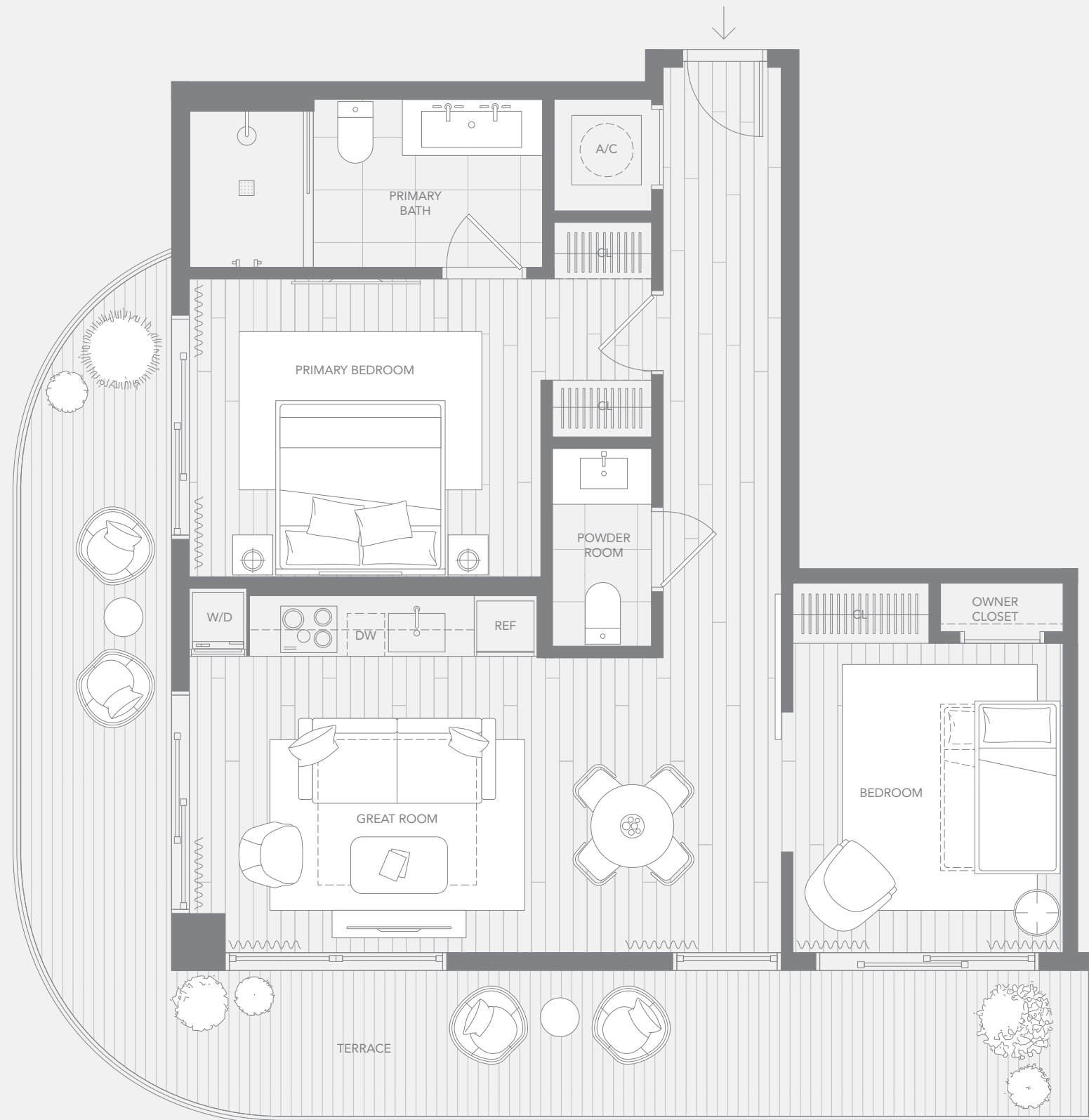
TYPE / D
2 BEDROOM / 1.5 BATHROOM

INTERIOR 885 SF | 79 M²
EXTERIOR 370 SF | 34 M²
TOTAL 1,255 SF | 117 M²

INQUIRE / (954) 210.4400
Sales@NatiivoFortLauderdale.com
NATIIVOFORTLAUDERDALE.COM

VISIT SALES LOUNGE /
606 E Broward Blvd.
Fort Lauderdale, Florida 33301

SITE ADDRESS /
200 West Broward Blvd.
Fort Lauderdale, Florida 33311



ORAL REPRESENTATIONS CANNOT BE RELIED UPON AS CORRECTLY STATING THE REPRESENTATIONS OF THE DEVELOPER. FOR CORRECT REPRESENTATIONS, MAKE REFERENCE TO THIS BROCHURE AND TO THE DOCUMENTS REQUIRED BY SECTION 718.503, FLORIDA STATUTES, TO BE FURNISHED BY A DEVELOPER TO A BUYER OR LESSEE.

This Condominium and project are being developed by 200 W Property Owner LLC, a Delaware limited liability company ("Developer"), which has a limited right to use the trademarked names and logos of Natiivo Direct LLC ("Natiivo®") pursuant to a license and marketing agreement with Natiivo® d/b/a Natiivo Hospitality. Any and all statements, disclosures and/or representations shall be deemed made by Developer and not by Natiivo® and you agree to look solely to Developer (and not to Natiivo® and/or any of its affiliates) with respect to any and all matters relating to the marketing and/or development of the Condominium and project and with respect to the sales of units in the Condominium and project. Stated dimensions are measured to the exterior boundaries of the exterior walls and the centerline of interior demising walls and in fact vary from the dimensions that would be determined by using the description and definition of the "Unit" set forth in the Declaration (which generally only includes the interior airspace between the perimeter walls and excludes interior structural components). For your reference, the area of the Unit, determined in accordance with those defined unit boundaries, is 1,255 SF. Note that measurements of rooms set forth on this floor plan are generally taken at the greatest points of each given room (as if the room were a perfect rectangle), without regard for any cutouts. Accordingly, the area of the actual room will typically be smaller than the product obtained by multiplying the stated length times width. All dimensions are approximate and may vary with actual construction, and all floor plans and development plans are subject to change. The sketches, renderings, graphic materials, plans, specifications, terms, conditions and statements contained in this brochure are proposed only, and the Developer reserves the right to modify, revise or withdraw any or all of same in its sole discretion and without prior notice. All improvements, designs and construction are subject to first obtaining the appropriate federal, state and local permits and approvals for same. All depictions of appliances, counters, soffits, floor coverings and other matters of detail, including, without limitation, items of finish and decoration, are conceptual only and are not necessarily included in each Unit. Consult your Agreement and the Prospectus for the items included with the Unit. Dimensions and square footage are approximate and may vary with actual construction.

