

THIS MAP WAS PREPARED FOR ASSESSMENT PURPOSE ONLY.

SW1/4 SW1/4 SEC.17 T.25S. R.5W. W.M.
DOUGLAS COUNTY
1" = 100'

REVISED ON
2-10-22

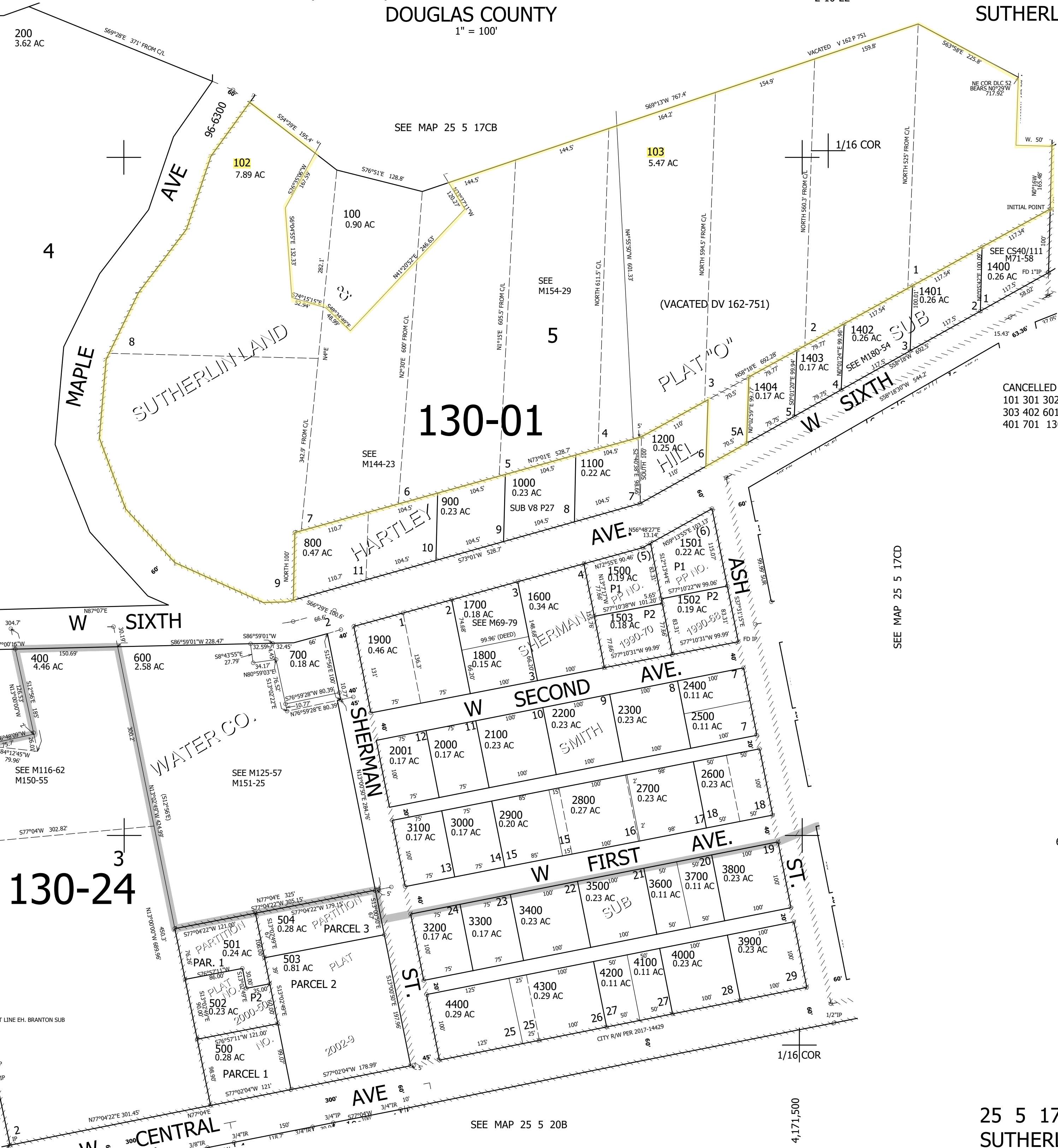
25 5 17CC
SUTHERLIN

1/16 COR

SEE MAP 25 5 18DD

18
17
19
20

SEE MAP 25 5 20BB



130-01

130-24

SEE MAP 25 5 17CD

CANCELLED NOS
101 301 302
303 402 601
401 701 1300

640,500

SEE MAP 25 5 20B

SEE MAP 25 5 20BB

25 5 17CC
SUTHERLIN

THIS MAP WAS PREPARED FOR ASSESSMENT PURPOSE ONLY.

NW1/4 SW1/4 SEC.17 T.25S. R.5W. W.M. DOUGLAS COUNTY

REVISED ON
12-28-07

25 5 17CB SUTHERLIN

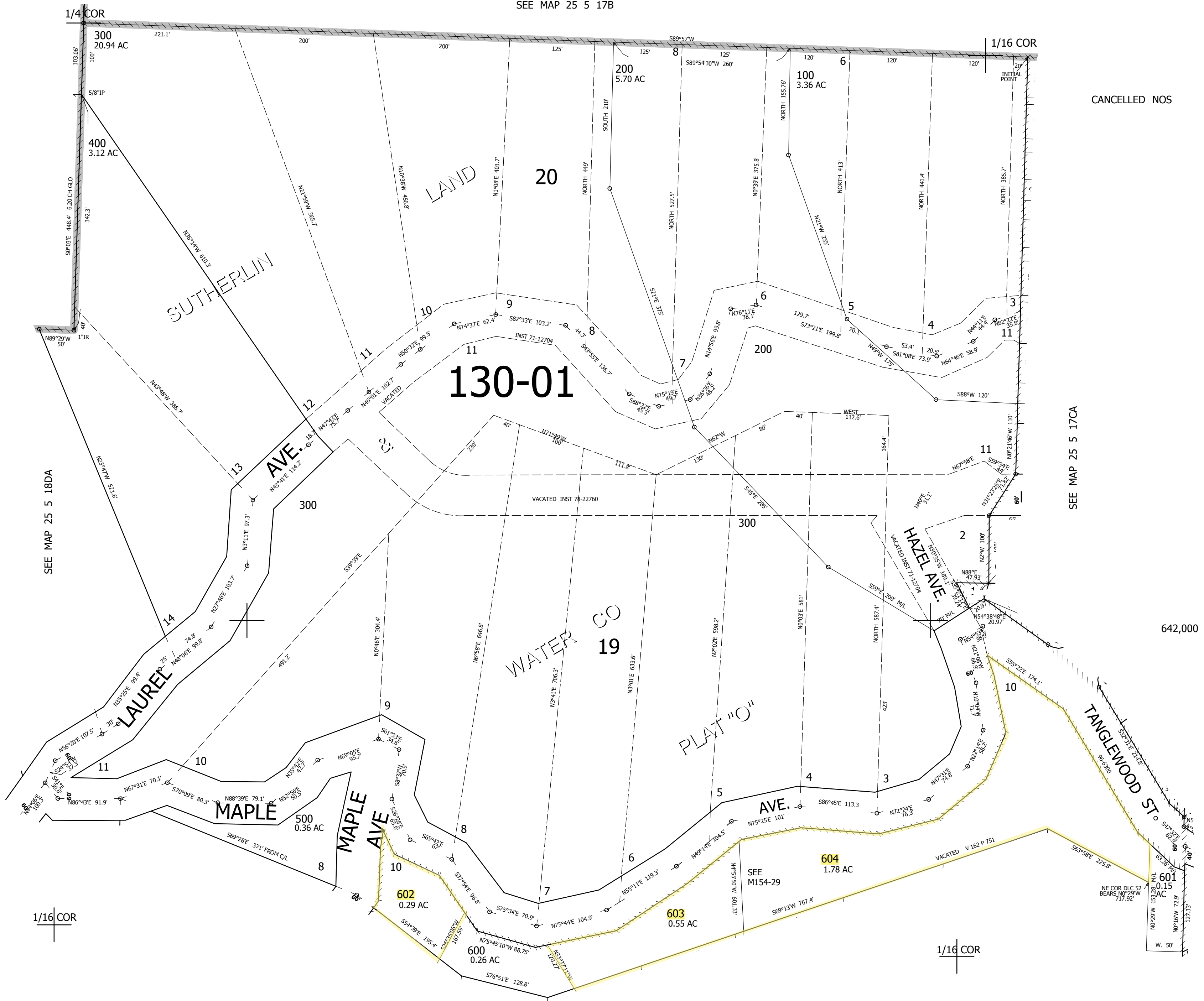
1" = 100'

SEE MAP 25 5 17B

CANCELLED NOS

SEE MAP 25 5 17CA

642,000



SEE MAP 25 5 17CC

4,171,500

25 5 17CB SUTHERLIN