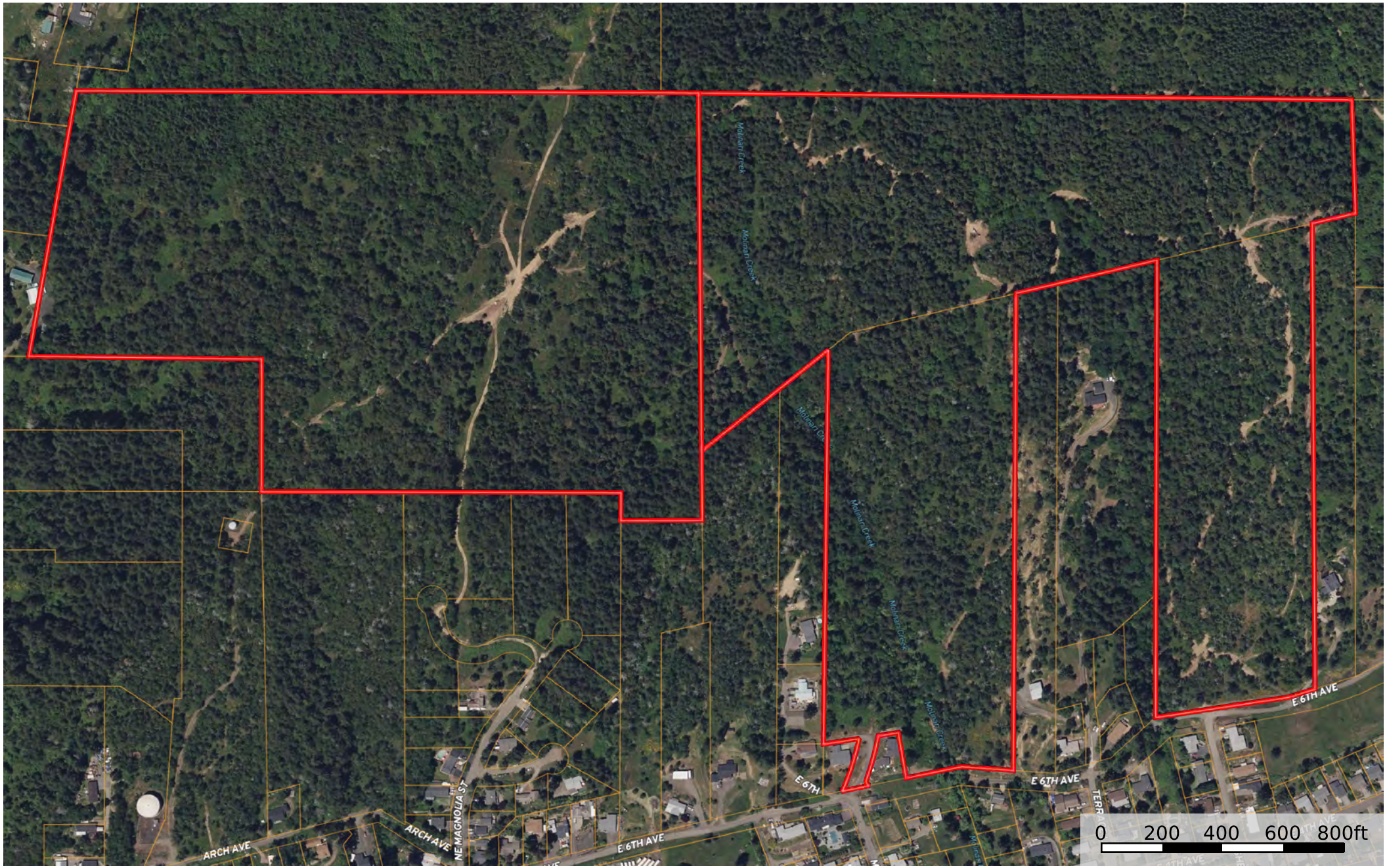


SUTHERLIN HEIGHTS

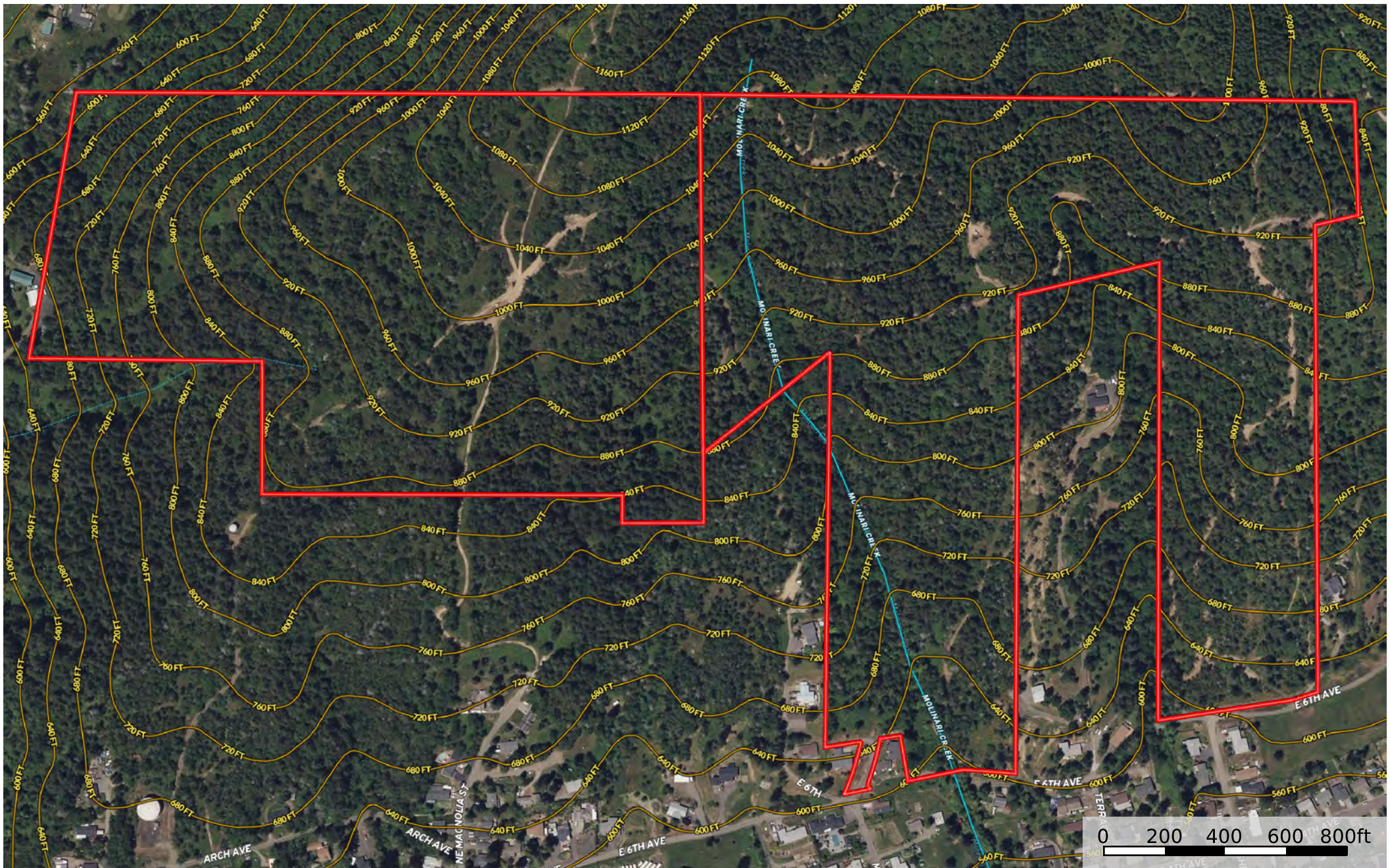
Douglas County, OR - 129.43 AC ±



 Boundary

SUTHERLIN HEIGHTS

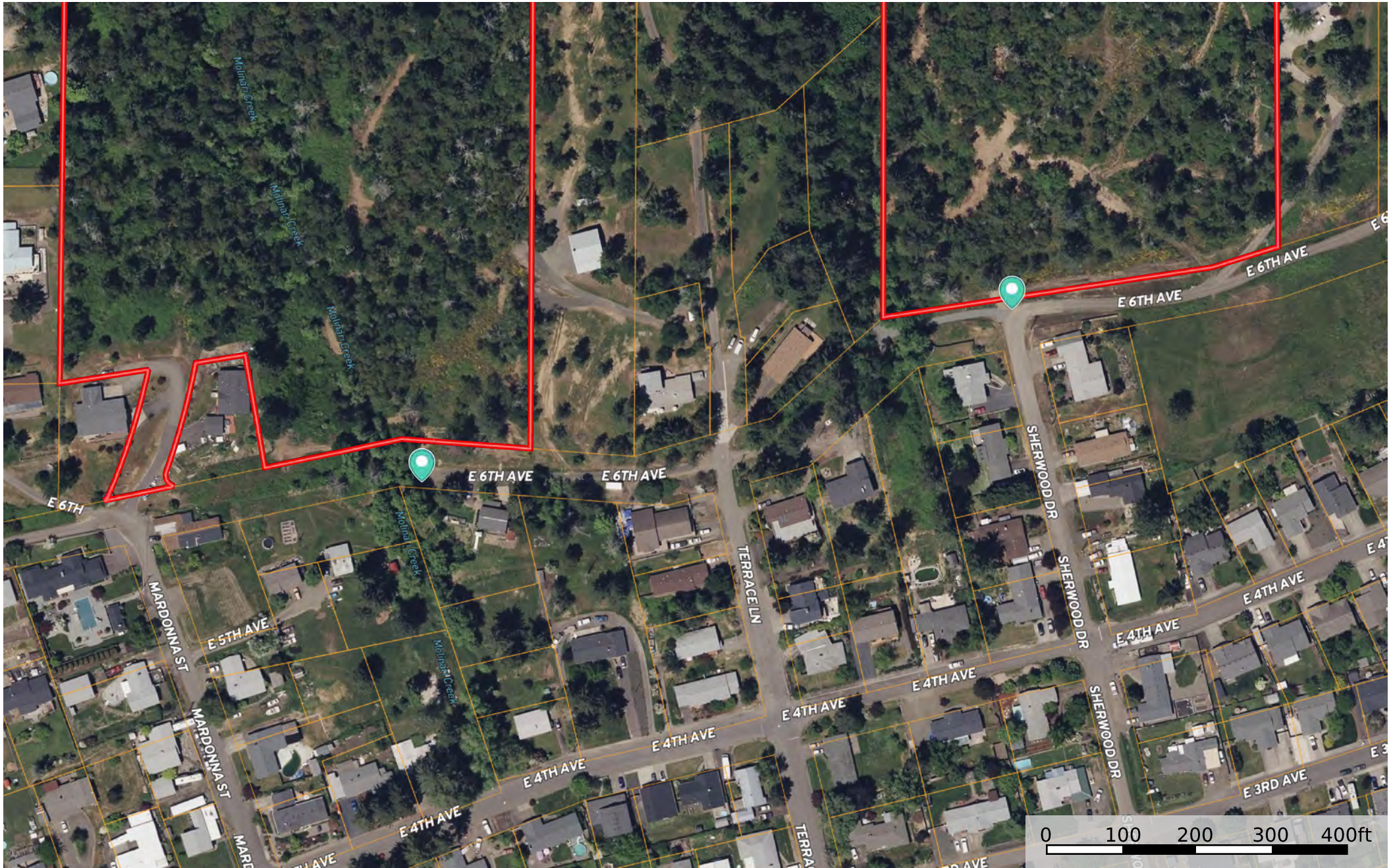
Douglas County, OR - 129.43 AC ±





 Boundary  Stream, Intermittent  River/Creek

SUTHERLIN HEIGHTS

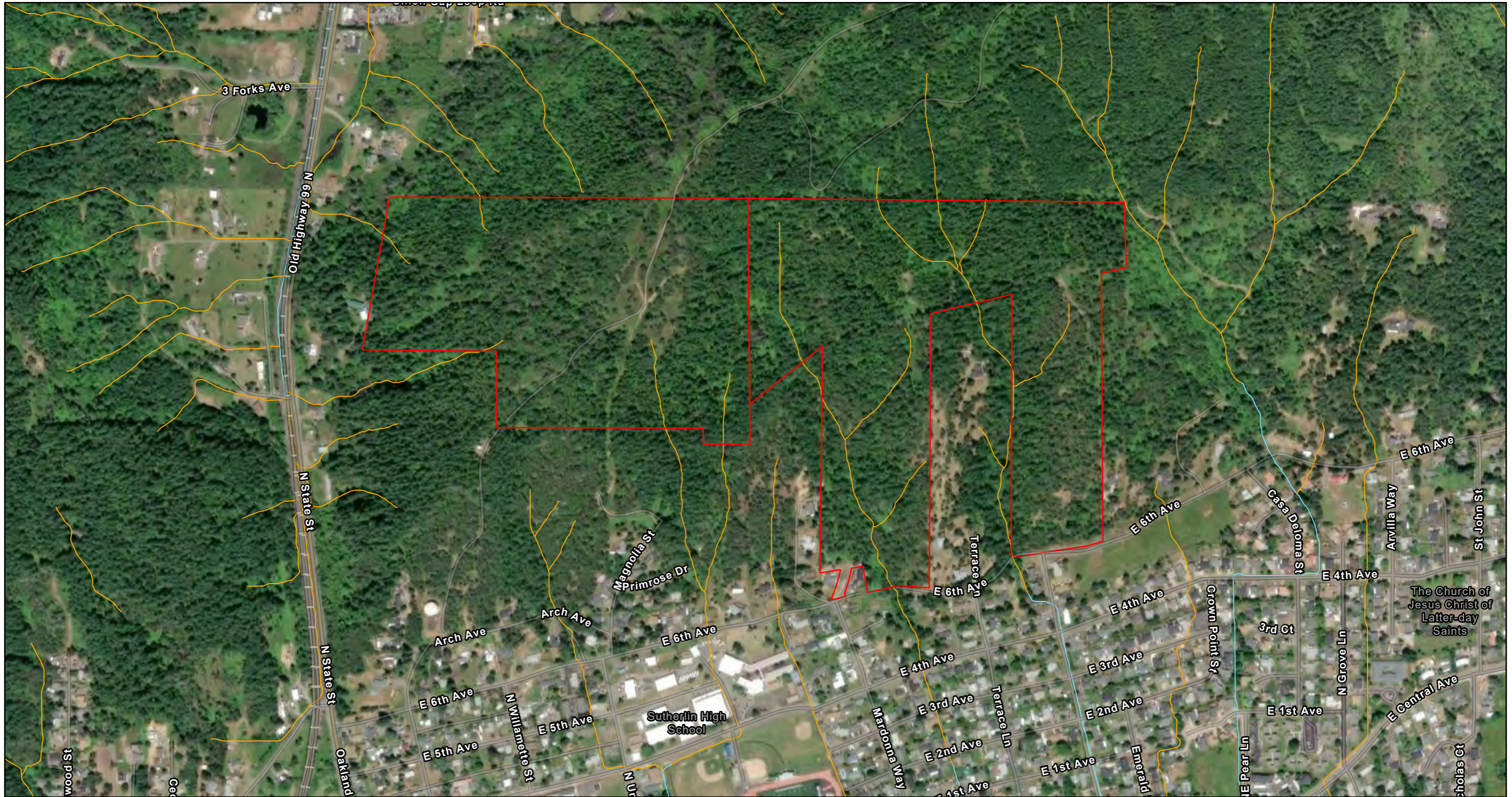
Douglas County, OR - 129.43 AC ±



 Park here for showings

 Boundary

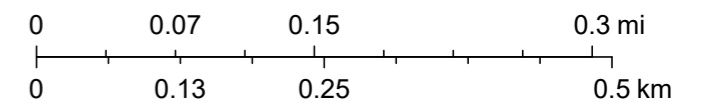
ODF FPA Streams Map



6/27/2026, 7:00:04 PM

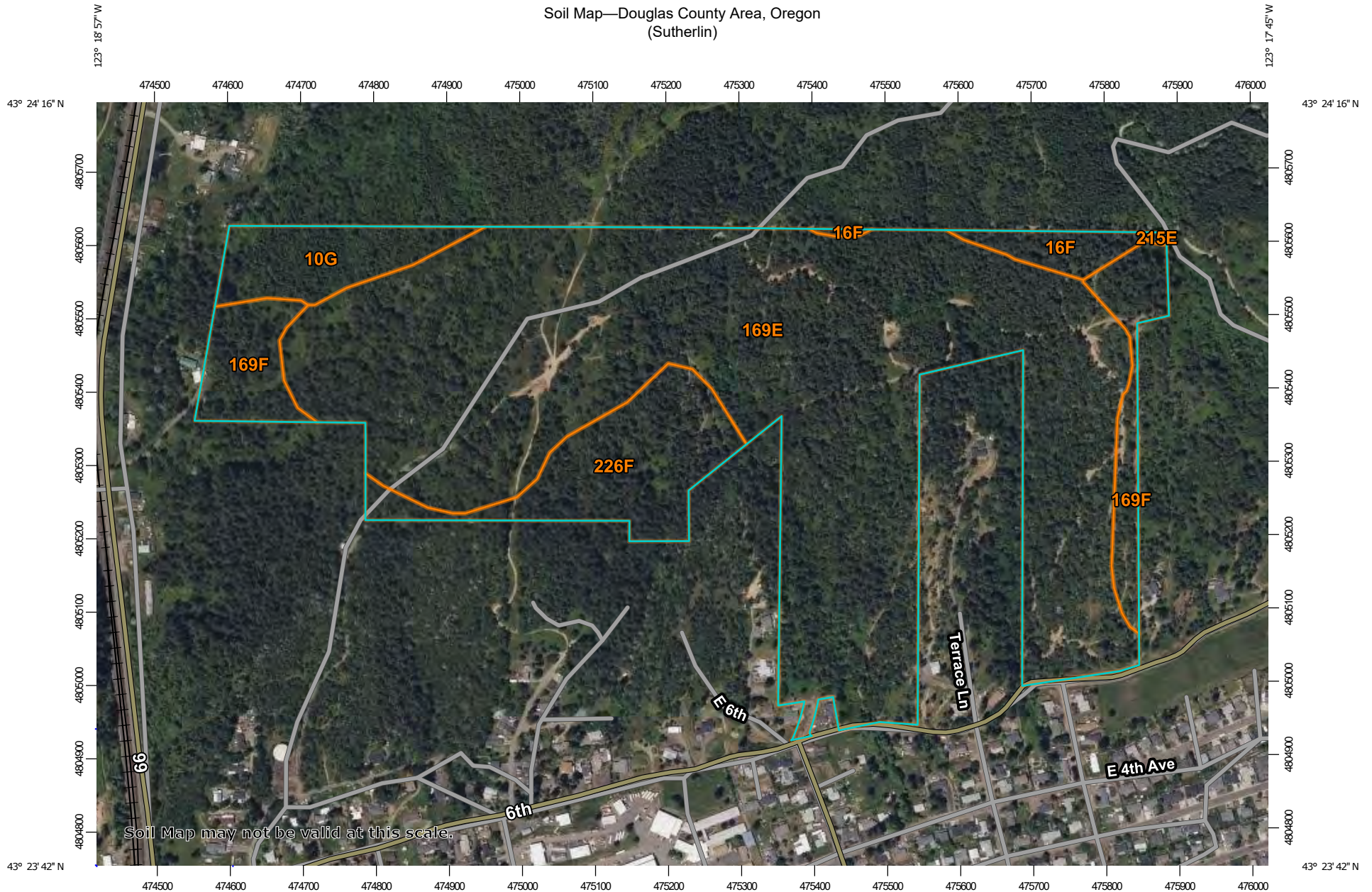
- 4
- FPA Flow Line, Fish Presence
- Fish, Small
- Nonfish, Small

1:9,028

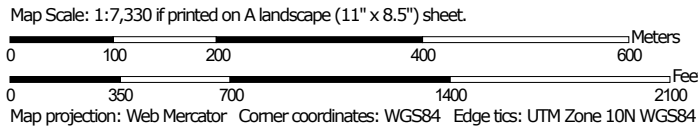


Sources: Esri, TomTom, Garmin, FAO, NOAA, USGS, © OpenStreetMap contributors, and the GIS User Community, Source: Esri, Vantor, Earthstar Geographics, and the GIS User Community

Soil Map—Douglas County Area, Oregon
(Sutherlin)



Soil Map may not be valid at this scale.



Map Unit Legend

Map Unit Symbol	Map Unit Name	Acres in AOI	Percent of AOI
10G	Atring-Larmine complex, 60 to 90 percent slopes	6.5	4.9%
16F	Bateman silt loam, 30 to 60 percent slopes	2.7	2.0%
169E	Nonpareil-Oakland complex, 12 to 30 percent slopes	100.2	76.5%
169F	Nonpareil-Oakland complex, 30 to 60 percent slopes	9.7	7.4%
215E	Rosehaven loam, 12 to 30 percent slopes	0.1	0.1%
226F	Speaker loam, 30 to 60 percent north slopes	11.8	9.0%
Totals for Area of Interest		130.9	100.0%