

THIS MAP WAS PREPARED FOR ASSESSMENT PURPOSE ONLY.

NE1/4 SEC.17 T.25S. R.5W. W.M.
DOUGLAS COUNTY

REVISED ON
6-22-07

25 5 17A
& INDEX
SUTHERLIN

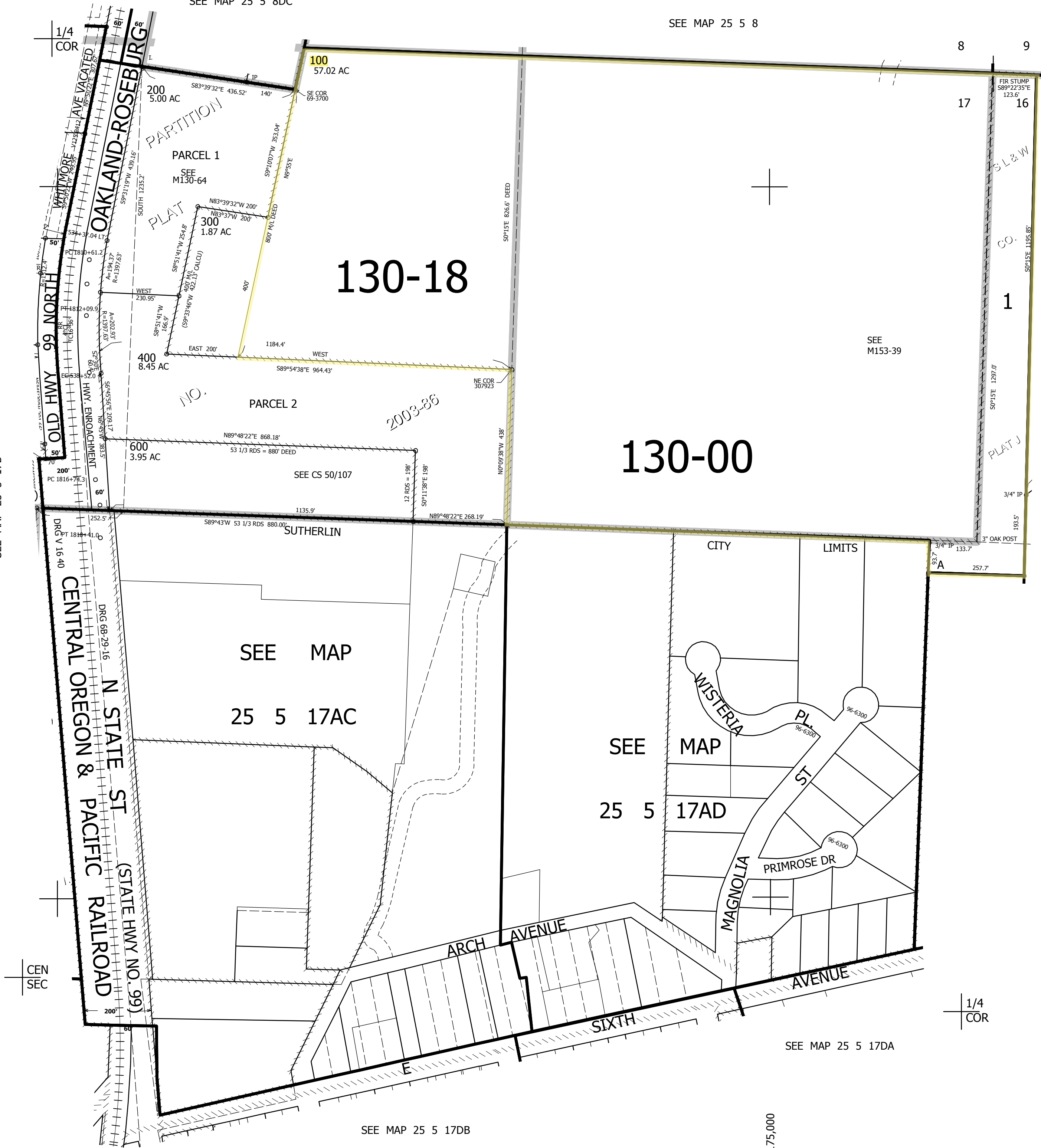
1" = 200'

SEE MAP 25 5 8DC

SEE MAP 25 5 8

SEE MAP 25 5 17B

SEE MAP 25 5 16B



CANCELLED NOS
201 500

130-01

130-00

130-18

643,000

4,175,000

25 5 17A
& INDEX
SUTHERLIN

SEE MAP 25 5 17DB