

2729 216 STREET BELLEVUE



Caeli McKay - Realtor®

514-451-6500

caeli@themckelviigroup.com

www.themckelviigroup.com



THE MCKELVIE GROUP

CALGARY & AREA | REAL ESTATE

real
Real Broker

2729 216 STREET, BELLEVUE

This 2-bedroom, 1-bathroom home sits in the heart of Bellevue and carries more than a century of Crowsnest Pass history. Built shortly after the Frank Slide in the early 1900s to accommodate displaced miners, it has been carefully maintained and genuinely loved ever since. In the 1980's an addition expanded the home, adding the second bedroom and a dedicated laundry room. The result is a property that blends original character with the practical updates today's buyers are looking for. The location is where this property truly stands out. Turtle Mountain fills the view right down the street, hiking and biking trails are steps from your front door, and local shops and playgrounds are all within easy reach. Bellevue itself has that close-knit, small-town feel that is becoming harder to find, with neighbours who look out for one another and a pace of life that suits anyone tired of the city rush. For skiing and snowboarding enthusiasts, both Castle Mountain and Fernie Alpine Resort are just a short drive away, putting two incredible mountains within easy reach for a day on the slopes. Summer brings its own draw, with world-class fishing, endless biking routes, and some of the most scenic hiking trails in southern Alberta right outside your door. Whether it is skiing, fishing, biking, or simply being outside in some of the most spectacular scenery in Alberta, the Pass delivers in every season, and this home puts you right in the middle of it. Out back, the large yard looks onto green space with no rear neighbours, giving you a natural buffer and room to make the space your own. It is the kind of backyard that invites quiet mornings with coffee, evening fires, or simply space for kids and pets to roam without anyone looking in. Key updates are already done, which means less to worry about and more time to enjoy the home. In 2023 the roof was replaced, a new poured concrete walkway was added, and the electrical was upgraded to a 100-amp service. These are the big-ticket items most buyers worry about, and here they are already taken care of. This home is move-in ready and quick possession is possible, so you could be settling into Pass life sooner than you think. If you are a family looking to plant roots in a thriving outdoor community, a first-time buyer seeking real value with real character, an investor with an eye on a growing mountain market, or someone searching for the perfect year-round getaway, this one is worth a serious look. Properties with this kind of history, setting, and move-in readiness do not come up often in the Pass, and this is a rare chance to own a piece of it.

THE **MCKELVIE** GROUP

CALGARY & AREA | REAL ESTATE

real
Real Broker





THE MCKELVIE GROUP

CALGARY & AREA | REAL ESTATE



2729 216 Street Bellevue, AB T0K0E0

Residential

Active

[A2320300](#)

Banner:

Turtle Mountain Views, Trailheads at Your Door! Your Year-Round Mountain Escape!

DOM: 18 **LP:** \$325,000.00

OP: \$337,500.00

PD:



Class:	Detached	City:	Bellevue
County:	Crowsnest Pass	Subdivision:	NONE
Type:	House	Ttl Beds:	2
Levels:	One	F/H Bth:	1/0
Year Built:	1911	RMS SQFT:	770.20
LINC#:	0018980680	LP/SF:	\$421.97
Arch Style:	Bungalow	Suite:	No
# Beds on Main:	2	# EnSuites:	0
# Illegal Suite:	0	# Legal Suite:	0
Possession:	Immediate, Negotiable		
Lot Dim:		Lot Size:	3861 SF 358.70 SM
Front Length:	10.67M 35' 0"	Lot Depth:	33.62 M 110.31'
Legal Pin:	6099AQ	Blk:	23
		Lot:	16 and the easterly 10 fe

Zoning:	R-1	Tax Amt/Yr:	\$1,999.32/2026
Title to Lnd:	Fee Simple	Loc Imp Amt:	
Disclosures:	No Disclosure	Front Exp:	W
Restrict:	Encroachment		

Recent Change: **07/06/2026 : DOWN : \$337,500->\$325,000**

Public Remarks: This 2-bedroom, 1-bathroom home sits in the heart of Bellevue and carries more than a century of Crowsnest Pass history. Built shortly after the Frank Slide in the early 1900s to accommodate displaced miners, it has been carefully maintained and genuinely loved ever since. In the 1980's an addition expanded the home, adding the second bedroom and a dedicated laundry room. The result is a property that blends original character with the practical updates today's buyers are looking for. The location is where this property truly stands out. Turtle Mountain fills the view right down the street, hiking and biking trails are steps from your front door, and local shops and playgrounds are all within easy reach. Bellevue itself has that close-knit, small-town feel that is becoming harder to find, with neighbours who look out for one another and a pace of life that suits anyone tired of the city rush. For skiing and snowboarding enthusiasts, both Castle Mountain and Fernie Alpine Resort are just a short drive away, putting two incredible mountains within easy reach for a day on the slopes. Summer brings its own draw, with world-class fishing, endless biking routes, and some of the most scenic hiking trails in southern Alberta right outside your door. Whether it is skiing, fishing, biking, or simply being outside in some of the most spectacular scenery in Alberta, the Pass delivers in every season, and this home puts you right in the middle of it. Out back, the large yard looks onto green space with no rear neighbours, giving you a natural buffer and room to make the space your own. It is the kind of backyard that invites quiet mornings with coffee, evening fires, or simply space for kids and pets to roam without anyone looking in. Key updates are already done, which means less to worry about and more time to enjoy the home. NEW 6FT WOODEN FENCE WILL BE BUILT SHORTLY, in 2023 the roof was replaced, a new poured concrete walkway was added, and the electrical was upgraded to a 100-amp service. These are the big-ticket items most buyers worry about, and here they are already taken care of. This home is move-in ready and quick possession is possible, so you could be settling into Pass life sooner than you think. If you are a family looking to plant roots in a thriving outdoor community, a first-time buyer seeking real value with real character, an investor with an eye on a growing mountain market, or someone searching for the perfect year-round getaway, this one is worth a serious look. Properties with this kind of history, setting, and move-in readiness do not come up often in the Pass, and this is a rare chance to own a piece of it.

Directions:

Rooms & Measurements

Baths:	1P	2P	3P	4P	5P	6P	Bed Abv: 2	Main: 71.55	Mtr2	770.20	SqFt
EnSt Bth:	0	0	1	0	0	0	Rms Abv: 4	Blw Grade: 2.48	Mtr2	26.66	SqFt
	0	0	0	0	0	0		Total AG: 71.55	Mtr2	770.20	SqFt

Property Information

Basement:	Other	Laundry Ft:	Main Level
Basement Dev:	Unfinished	Basement Ft:	
Heating:	Forced Air, Natural Gas	Cooling:	None
Construction:	Wood Siding	Fireplaces:	0
Foundation:	Poured Concrete	Flooring:	Carpet, Laminate
Exterior Feat:	Garden, None	Fencing:	Fenced
Roof Type:	Metal	Patio/Porch:	Deck, Front Porch, Side Porch
Reports:	Floor Plans, RMS Supplements, RPR with Compliance, Title		
Parking:	On Street, Parking Pad, Unpaved Total: 1		
Features:	Laminate Counters, No Smoking Home, See Remarks		
Comm Feature:	Fishing, Golf, None, Park, Playground, Schools Nearby, Shopping Nearby, Sidewalks, Street Lights, Walking/Bike Paths		
Lot Features:	Back Lane, Back Yard, Backs on to Park/Green Space		
Goods Include:	N/A		
Appliances:	Microwave, Refrigerator, Stove(s), Washer/Dryer, Window Coverings		
Other Equip:	None		
Goods Exclude:	N/A		
Outbuildings:	Shed		

Printed Date: 07/06/2026 3:09:50 PM

INFORMATION HEREIN DEEMED RELIABLE BUT NOT GUARANTEED. AS OF 2017 MEASUREMENTS ARE PER RESIDENTIAL MEASUREMENT STANDARDS (RMS).

THE MCKELVIE GROUP

CALGARY & AREA | REAL ESTATE

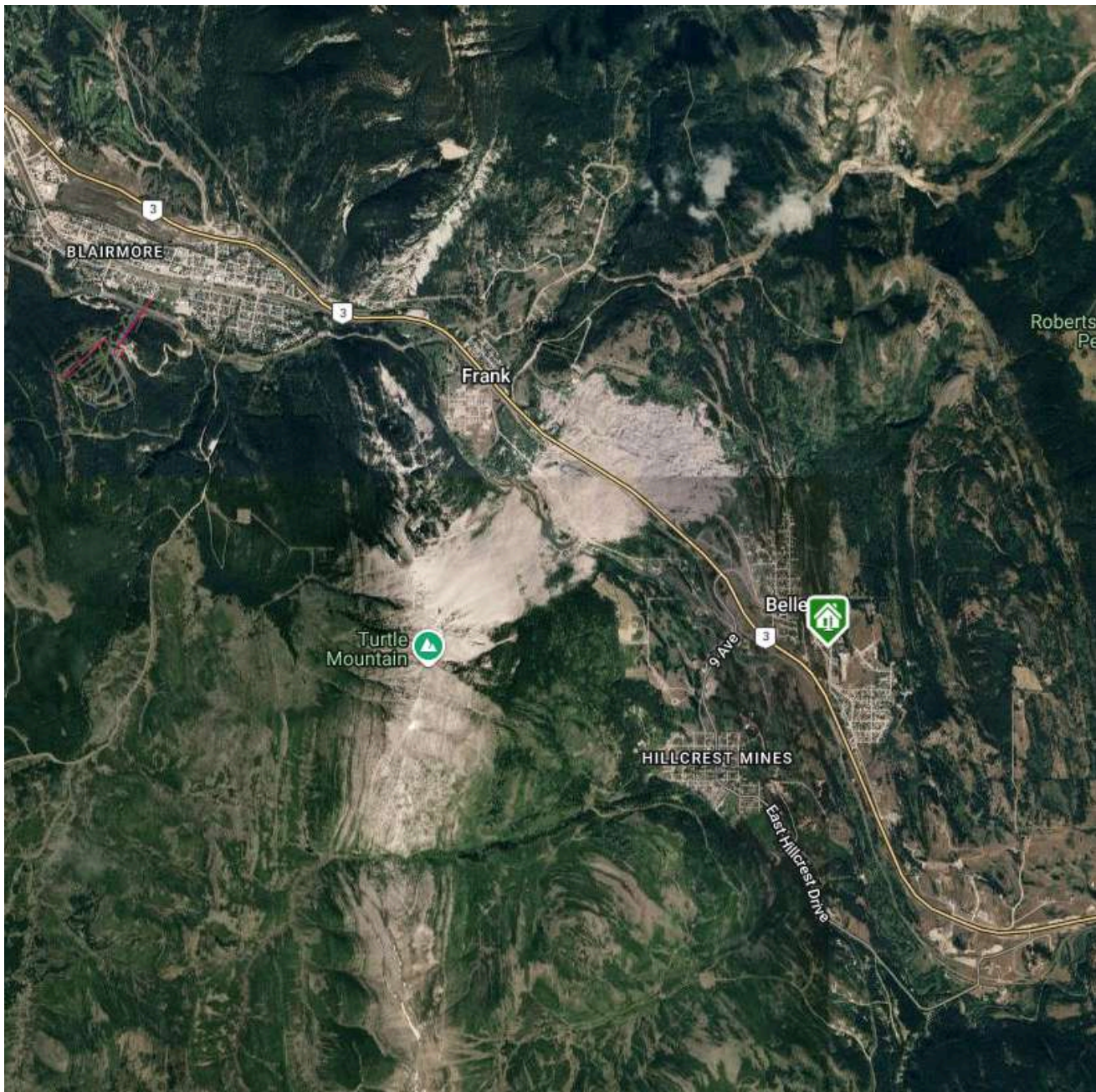


real
Real Broker

Banner: Turtle Mountain Views, Trailheads at Your Door! Your Year-Round Mountain Escape!

Rooms

Type	Level	Dimensions		Type	Level	Dimensions	
3pc Bathroom	Main	4' 3" x 10' 4"	1.30M x 3.15M	Bedroom	Main	8' 0" x 11' 2"	2.44M x 3.40M
Kitchen	Main	14' 6" x 10' 4"	4.42M x 3.15M	Laundry	Main	15' 0" x 7' 6"	4.57M x 2.29M
Living Room	Main	10' 9" x 11' 3"	3.28M x 3.43M	Bedroom - Primary	Main	12' 7" x 10' 0"	3.83M x 3.05M
Furnace/Utility Room	BSMT	9' 6" x 8' 3"	2.90M x 2.51M				



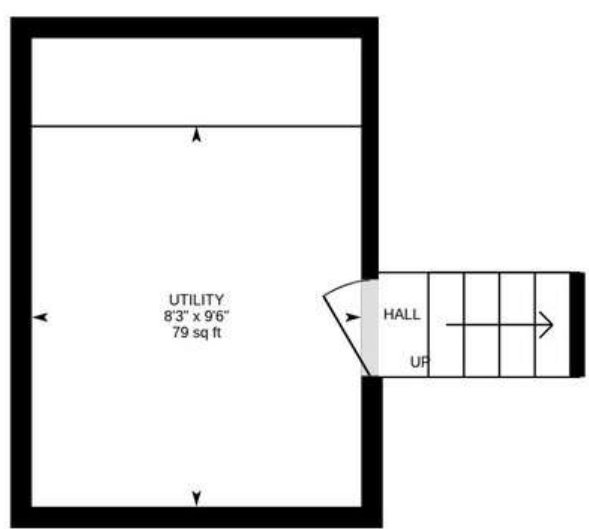
THE FLOOR PLAN



MAIN FLOOR:

EXTERIOR AREA:
770.20 SQ. FT.

INTERIOR AREA:
702.30 SQ. FT.



BASEMENT (BELOW GRADE):

EXTERIOR AREA:
26.66 SQ. FT.

INTERIOR AREA:
92.70 SQ. FT.

THE MCKELVIE GROUP

CALGARY & AREA | REAL ESTATE

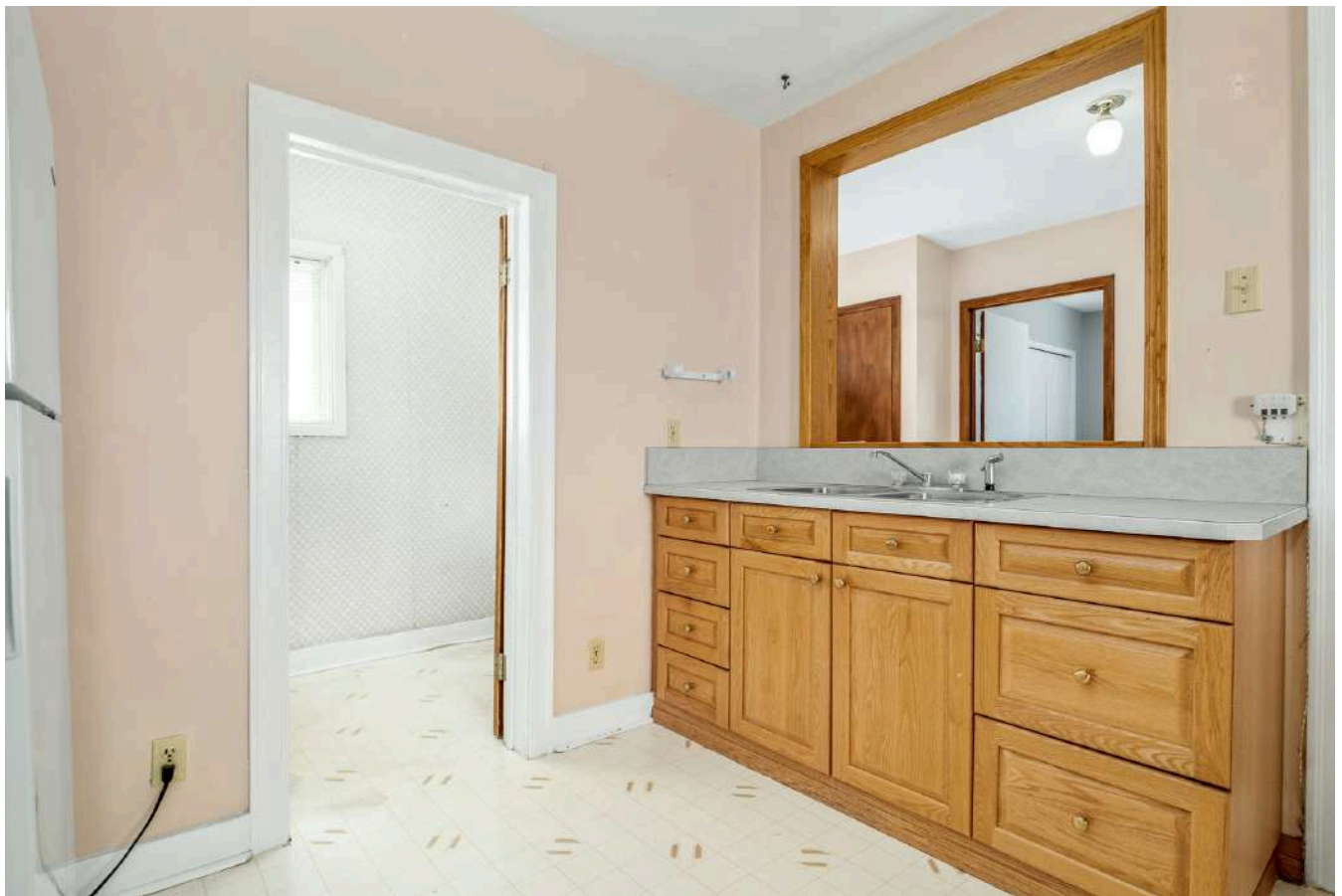










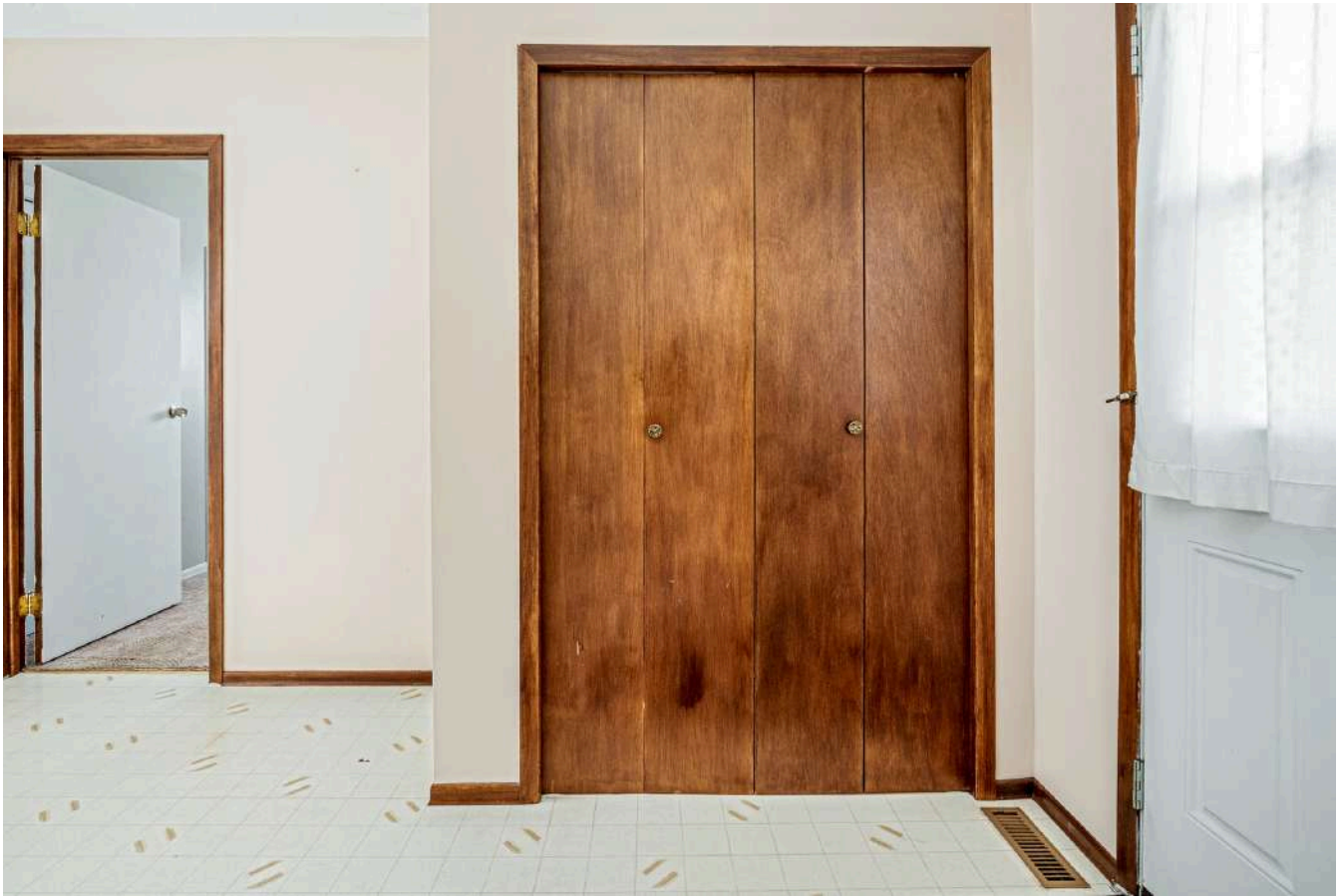






















WELCOME TO

BELLEVUE

Crowsnest Pass Alberta



THE **MCKELVIE** GROUP

CALGARY & AREA | REAL ESTATE

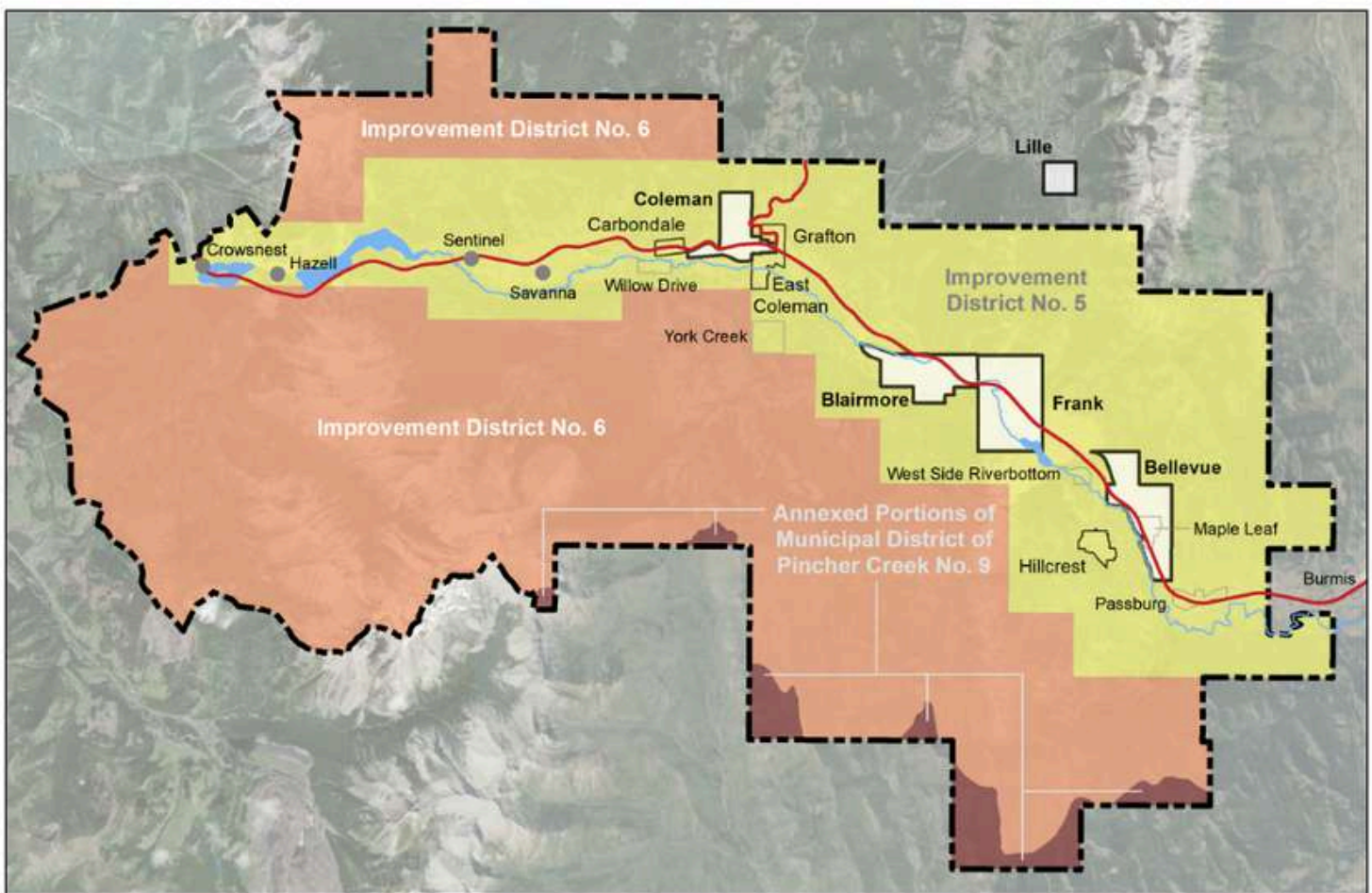
real
Real Broker

THE COMMUNITY

WELCOME TO CROWSNEST PASS

The Municipality of Crowsnest Pass is an amalgamated community in southwestern Alberta. Within the Rocky Mountains adjacent to the eponymous Crowsnest Pass, the municipality formed as a result of the 1979 amalgamation of five municipalities, all located within a 15-minute drive of each other along Highway 3:

- Bellevue
- Blairmore
- Coleman
- Frank
- Hillcrest



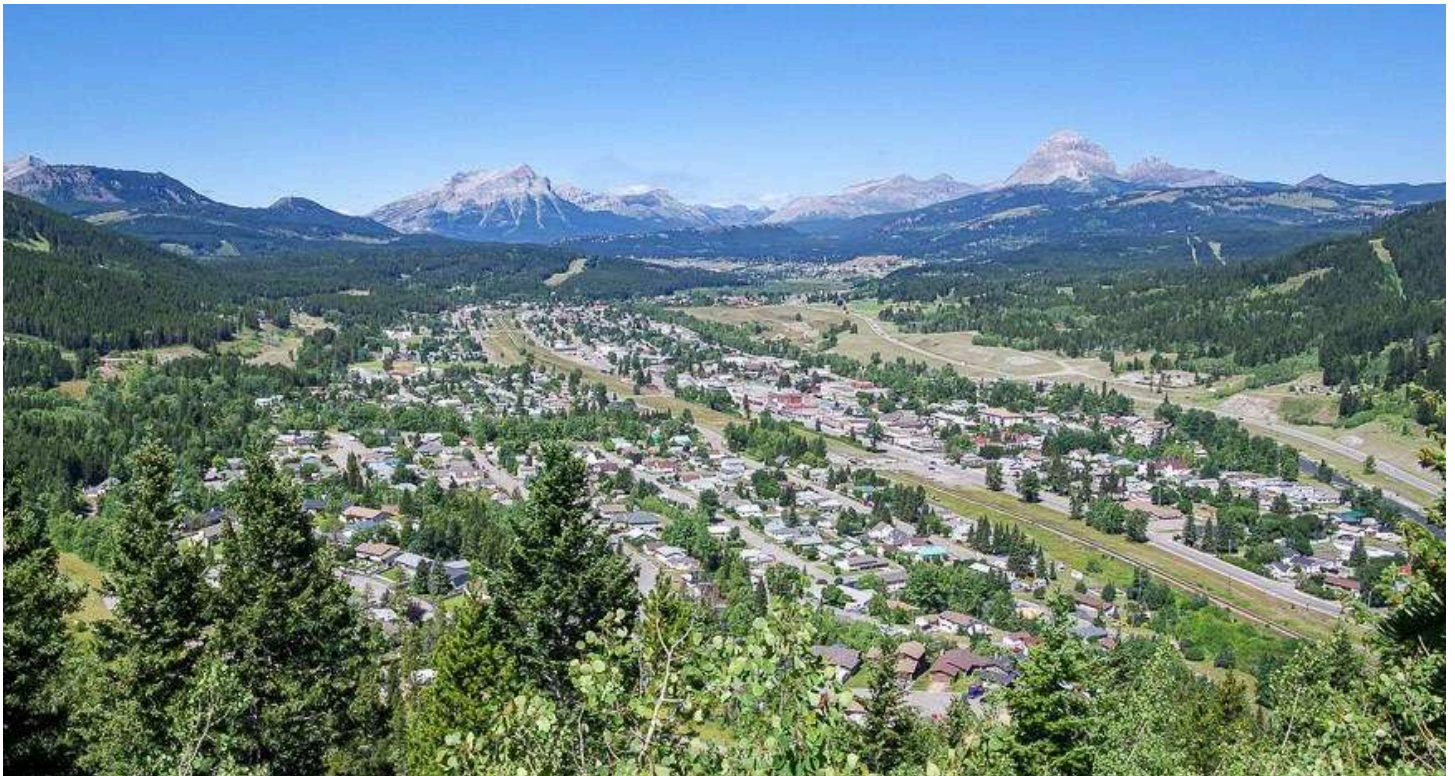
Municipality of Crowsnest Pass	Other Former Community or Townsite	Former Improvement District No. 5
Former Town or Village	Locality	Former Improvement District No. 6
Former Hamlet		Previously Municipal District of Pincher Creek No. 9

THE COMMUNITY

The communities in Crowsnest Pass owe their existence to coal mining. The first coal mine in the area opened in 1900. Its ethnic and cultural diversity comes from the many European and other immigrants attracted to the area by the mines. Through the years, coal mining suffered from fluctuating coal prices, bitter strikes, and underground accidents. All the mines on the Alberta side of the pass closed throughout the 20th century as cheaper with the opening of safer open-pit mines on the British Columbia side of the pass. An operating coal mine just across the British Columbia boundary in Sparwood continues to provide employment for residents living in the Municipality of Crowsnest Pass.

Crowsnest Pass is known for tragedy. In 1903, the tip of Turtle Mountain broke loose and decimated part of the Village of Frank. The event was heralded as the Frank Slide. In 1914, the Hillcrest mine disaster occurred near Hillcrest, killing 189 people. Spring floods occurred in 1923 and 1942. Periodic forest fires have swept the valley, including one in the summer of 2003 that threatened the entire municipality.

The area was a centre for "rum-running" during prohibition, from 1916 to 1923, when liquor was illegally brought across the provincial boundary from British Columbia. The legacy is celebrated at the restored Alberta Provincial Police Barracks, which is now an interpretive centre.



THE COMMUNITY

WELCOME TO BELLEVUE

Bellevue (/ˈbɛlvjuː/) is an urban community perched at 4,280 feet (1,305 m) elevation in the Rocky Mountains within the Municipality of Crowsnest Pass in southwest Alberta, Canada. It was formerly incorporated as a village prior to 1979 when it amalgamated with four other municipalities to form Crowsnest Pass.

Unlike some of the other communities in Crowsnest Pass, which relied on a single coal mine, Bellevue benefitted from the proximity of several successful mines and persists today despite setbacks from fire, strikes, mine accidents and fluctuations in the coal market.



COMMUNITY SUPPORT

<https://www.crowsnestpass.com/living-here>

Community Support in Crowsnest Pass offers a wide range of essential services and connections to help residents thrive. From mental-health and addiction resources, crisis lines, and emergency numbers, to literacy programs, adult education, library access, family and youth supports like Meals on Wheels and Kidsport, plus grants, volunteer awards, and a full listing of community groups, everything you need is organized in one spot.

THE COMMUNITY

HISTORY

Bellevue was founded in 1905 on the flat land above the Bellevue Mine operated by the French-based West Canadian Collieries (WCC). Its post office opened in 1907. The naming of the town is credited to Elsie Fleutot, the young daughter of one of WCC's French Canadian principals, Jules J. Fleutot, after she exclaimed "Quelle belle vue!" (What a beautiful view!). In 1909, the Maple Leaf Coal Company commenced operations at the Mohawk Bituminous Mine and constructed the settlement of Maple Leaf adjacent to Bellevue. In 1913, WCC transferred many workers to Bellevue from its closed Lille operations. WCC displayed a five-ton coal boulder at the 1910.

This period of growth was not without setbacks. An explosion in the Bellevue Mine during a partial afternoon shift on December 9, 1910, killed 30 miners. In 1917, a fire destroyed most of Bellevue's business section, followed by smaller fires in 1921 and 1922. A shantytown called Bush Town, or Il Bosc, below Bellevue was flooded in 1923 but persisted for several years.



Bellevue Front Street before 1917 fire.

HISTORY

West Canadian Collieries opened the Adanac Mine at Byron Creek in 1945, but by 1957 all of the Bellevue area mines were closed. The tipples at Bellevue continued to process coal from WCC's Grassy Mountain open-pit, but was removed in 1962 after that operation closed. These closures caused a critical reduction in Bellevue's tax base.

Bellevue finally incorporated as a village on January 1, 1957. The realignment of Highway 3 in the 1970s led to a decline of Bellevue's business section. On November 3, 1978, the Government of Alberta passed the Crowsnest Pass Municipal Unification Act, which led to the formal amalgamation of the Village of Bellevue with the Town of Blairmore, the Town of Coleman, the Village of Frank, and Improvement District (ID) No. 5 on January 1, 1979.

Bellevue Café shootout

On August 2, 1920, local miners George Arkoff, Ausby Auloff and Tom Bassoff robbed the Canadian Pacific Railway's train No.63 at gunpoint, hoping to find wealthy rum-runner Emilio "Emperor Pic" Picariello aboard. Eluding the Royal Canadian Mounted Police, the Alberta Provincial Police and the CPR Police, Auloff escaped into the United States while Bassoff and Arkoff remained in the area. On August 7, the two were spotted in the Bellevue Café. Three constables entered the café through the front and back doors, and in the ensuing shootout Arkoff, RCMP Corporal Ernest Usher and APP Constable F.W.E. Bailey were killed, while Bassoff, though wounded, escaped into the rubble of the Frank Slide. During the pursuit, Special Constable Nicolas Kyslik was accidentally shot and killed by another officer. Bassoff was eventually apprehended without incident on August 11 at Pincher Station, 35 kilometres to the east.

Although testimony suggests that the police officers had failed to identify themselves and had probably fired first, Bassoff was found guilty of murder and hanged in Lethbridge on December 22, 1920.

Ausby Auloff was captured in 1924 near Butte, Montana, after trying to sell a distinctive railway watch. Auloff, who had not been involved in the shootout, was returned to Alberta where he was sentenced to seven years' imprisonment, and died in 1926.

THE COMMUNITY

THIS IS ALBERTA'S MOST FAMOUS TREE AND IT'S OLDER THAN CANADA



Along Crowsnest Highway, just east of Bellevue, you'll find Alberta's most famous tree — and if you blink, you might just miss it! **The Burmis Tree** looks like something straight out of a Tim Burton film, and when you see it, it's no wonder that it's the most photographed tree in Canada.

<https://curiocity.com/burmis-tree-bellevue-crowsnest-alberta/>



CROWSNEST PASS: BELLEVUE'S TINY CHURCH

The Crowsnest Pass isn't just a high-point on the highway, and a dividing line between Alberta and British Columbia. It's an entire district of small mining towns and historic attractions — not to mention, it's all surrounded by Rocky Mountain peaks.

If you're headed west on Highway 3, the Crowsnest Highway, the first town you'll encounter in the historic district is Bellevue.

<https://takemytrip.com/2015/11/crowsnest-pass-bellevues-tiny-church/>

THE COMMUNITY

BELLEVUE UNDERGROUND MINE

2531 213 St, PO Box 519, Bellevue, AB T0K 0C0

e: bellevuemine@shaw.ca

p: 403 564 4700

<https://www.crownsnestheritage.ca/bellevue-underground-mine>



THE ECOTRUST MUSEUM

operates the Bellevue Mine Tours from May to September and provides visitors with a unique opportunity to go a short distance underground into a historic coal mine. Hardhats, lights, and knowledgeable guides are provided. There are many on-site artifacts both in the mine and near the entrance.

The Bellevue Mine was active from about 1905 until 1961 and was the reason for the town of Bellevue's existence. Most of the coal produced was sold to the Canadian Pacific Railway.

UNDERGROUND EXPLOSION

Like other mines in the Pass, methane gas and coal-dust were significant hazards. On December 9, 1910 an underground explosion claimed the lives of 31 of the 42 men on a partial shift – but had the explosion occurred during a full shift, up to 200 men would have been in the mine which could have surpassed the Hillcrest Mine Disaster (only a few kilometers away) for loss of life.

LOW WAGERS AND POOR WORKING CONDITIONS

Low wages and poor working conditions often led to labour unrest in the Pass, and the Bellevue Mine was closed due to major strikes in 1911, 1919, 1920, 1922 and 1924. Declining demand for coal, particularly when the CPR began to convert from steam to diesel, sealed the fate of the mine which closed in 1961.

THE COMMUNITY



23751 Passburg Drive, Bellevue AB T0K 0C0

1-403-564-4814

info@crowsnestpasscamp.com

<https://crowsnestpasscamp.com/>



Welcome to the Crowsnest Pass Campground. Surrounded by the Rocky Mountains, this campground's breath taking views are sure to make a lasting memory. The family owned and operated business offers 21 serviced sites (water and 30 amp. power) 10 of which also have sewer. Other services include indoor washrooms, showers, laundry facilities and wireless internet. Located within walking distance of the Crowsnest River and within minutes of historic sites, forest reserve access, and town amenities.

CROWSNEST RIVER AND FLY FISHING

The Crowsnest River is a world-renowned trout stream originating in the Canadian Rockies at Crowsnest Lake. Meandering eastward through the Municipality of Crowsnest Pass, the Frank Slide, and the foothills, it offers exceptional fly fishing and scenic walk-and-wade experiences before draining into the Oldman River Reservoir



BEST TRAILS NEAR CROWSNEST RIVER

Want to check out Crowsnest River from the trail? Good news: 7 trails will get you there, including hiking trails. Plan your trip with hand-curated trail maps, along with reviews and photos from nature lovers like you. Explore Crowsnest River from one of 3 easy hiking routes or discover kid-friendly routes for your next family trip. Looking for a challenge? Choose from 4 moderate or hard routes. No matter how you like to get out in nature, the trails near Crowsnest River are perfect for hikers and outdoor enthusiasts.

Check out the website [alltrails.com](https://www.alltrails.com) to find maps, reviews and more.

<https://www.alltrails.com/poi/canada/alberta/blairmore--2/crowsnest-river>

Top Trails

- #1 - Bluff Mountain
- #2 - Crowsnest Community Trail
- #3 - Whistling Post Loop
- #4 - Stinky Narrows Loop
- #5 - Crownest Pass Run
- #6 - The Great Divide Trail: Blairmore
- #7 - Mount Marsden Connector



THE COMMUNITY

BOW CROW FOREST RESERVE

The Bow-Crow Forest Reserve (formally the Crowsnest-Bow River Forest) spans the eastern slopes of the Canadian Rockies in Southern Alberta. Stretching from the US border north to the Red Deer River, it is managed as a Crown land zone. It offers abundant backcountry camping, hiking, and motorized recreation.



https://mountainviewbears.com/pdf/Bow-Crow%20Wildlife%20District_Human%20Wildlife%20Conflict_May2020.pdf



FRANK SLIDE INTERPRETIVE CENTRE

1.5 km off Highway #3
Crowsnest Pass, Alberta
Phone: 403-562-7388
<https://frankslide.ca/>

The Frank Slide Interpretive Centre, in southern Alberta's spectacular Crowsnest Pass, overlooks Canada's deadliest rockslide. See and hear first-hand what happened the night Turtle Mountain fell. Enjoy engaging storytelling, interactive displays, gripping accounts, and an award-winning show.

THE COMMUNITY

CROWSNEST MUSEUM

7701 18 Ave.
Coleman, AB | TOK 0M0

museum@heritagecrowsnest.com
403-563-5434
<https://www.crowsnestmuseum.ca/>



Located in the Coleman National Historic Site of Canada, the Crowsnest Museum explores daily life in the Crowsnest Pass, celebrating both the triumph and tragedy of the area. Visitors are encouraged to discover the unique industrial history, exciting criminal ties, and memorable events of the Pass and its people.



LEITCH COLLIERIES

Off Highway 3
Municipality of
Crowsnest Pass, Alberta
403-562-7388
<https://leitchcollieries.ca/>

In 1983, the Province of Alberta opened this historic site. From 1907 to 1915, Leitch Collieries Coal and Coke Company operated its surface workings here. Today the story of the only Canadian owned and operated coal mine in the Crowsnest Pass is told through listening posts, storyboards, and photographs.

Find out how the effects of strikes, war, untimely death, and other ill-fortune contributed to the collapse of this ambitious Canadian owned and operated mining venture. Interpretive panels, listening posts, and walking paths through the ruins create a window back in time to the early 1900s.

THE COMMUNITY

LUNDBRECK FALLS PROVINCIAL RECREATION AREA

25 km northwest of
Pincher Creek off Hwy. 3
<https://www.albertaparks.ca/parks/south/lundbreck-falls-pra/>

Lundbreck Falls is one of southern Alberta's most accessible and breathtaking landmarks, located just off Highway 3 between Crowsnest Pass and Pincher Creek. This quick and scenic stop offers striking waterfall views, peaceful river scenery, and plenty of space to recreate.

Two viewing platforms provide excellent vantage points, while a short trail leads to a lower viewpoint where visitors can feel the mist and enjoy dramatic photo opportunities. Picnic tables and fire pits in the overflow area across the bridge make it an inviting place for a meal or a rest break. An outhouse is available near the main parking area.

With easy access to year-round scenery and popular fishing spots along the Crowsnest River, Lundbreck Falls is a favourite destination for road-trippers, photographers, anglers, and families exploring Alberta's southern foothills.



THE COMMUNITY

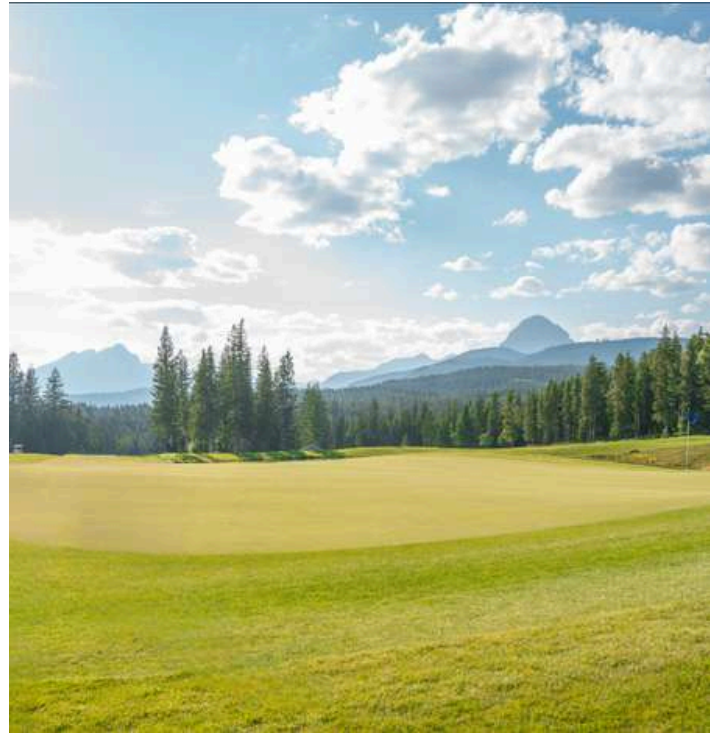
CROWSNEST PASS GOLF CLUB

90 Golf Course Road, Blairmore, AB T0K 0E0
403-562-2776

info@crowsnestpassgolf.com

<https://crowsnestpassgolf.com/>

Located in the Coleman National Historic Site of Canada, the Crowsnest Museum explores daily life in the Crowsnest Pass, celebrating both the triumph and tragedy of the area. Visitors are encouraged to discover the unique industrial history, exciting criminal ties, and memorable events of the Pass and its people.



ALLISON CREEK FALLS

Unnamed Road,
Coleman, AB T0K 0M0
[GOOGLE MAPS](#)

Directions: Park at Chinook lake and follow the right hand side of the lake to get to the falls trailhead. An easy minimal elevation change hike that takes about an hour round trip.

Seeing castle mountain through the falls is beautiful. 3 skinny bridges cross the creek.

THE COMMUNITY

CHINOOK LAKE

<https://www.albertaparks.ca/parks/south/chinook-pra/>



Set beneath the dramatic backdrop of Crowsnest Mountain, Chinook Provincial Recreation Area offers year-round recreation. Spend your days paddling, swimming, or fishing on Chinook Lake, relaxing at shaded picnic sites, or exploring nearby hiking and mountain biking trails. In winter, the area becomes a snowy escape with groomed cross-country ski and snowshoe trails.

Chinook Campground features well-treed, fully reservable sites across four loops, including a tenting loop, making it an ideal base for families and travelers. With lakeside recreation, scenic trails, and comfortable camping, Chinook Provincial Recreation Area is a welcoming destination for visitors looking for a mountain getaway in any season.

CROWSNEST PASS PUBLIC ART GALLERY

Highway 3,
14737, 20th Ave.
Frank, Crowsnest Pass, AB
cnpaaa@shaw.ca
403-562-2218

<https://www.crowsnestpasspublicartgallery.ca/>



THE COMMUNITY

MDM COMMUNITY CENTER

2802 222 St, Bellevue, AB
T0K 0E0
403-563-2208



The hub for sports and recreation in the Bellevue area is the MDM Community Centre. Managed by the Municipality of Crowsnest Pass, it features an indoor gymnasium and meeting rooms that host everything from community events to indoor sports leagues. Features regular drop-in programs, including dedicated adult/senior pickleball and gym-walking sessions.

SPORTS & REC - LOCALLY AND CLOSE BY

Crowsnest Sports Complex

8702 - 22 Avenue, Coleman

The Crowsnest Sports Complex includes the ice skating rink, curling rink, curling lounge, and kitchen.

Soccer Fields

CCHS High School Field | 8901 - 20 Avenue, Coleman

Horace Allen School Field | 2002 - 76 Street, Coleman

Isabelle Sellon School Field | 12602 - 18 Avenue, Blairmore

Ball Diamonds

Isabelle Sellon Ball Diamonds | 12602 - 17 Avenue, Blairmore

Hillcrest Ball Diamonds | 21720 - 3 Avenue, Crowsnest



<https://www.crowsnestpass.com/living-here/recreation-facilities-outdoor-spaces/community-facilities>

THE COMMUNITY



This website is ideal if looking for all types of parks and recreation offered in the Crowsnest park Municipality. Including pools, gyms, parks, tennis, ball diamonds etc.

<https://cnp.recdesk.com/Community/Facility>

BELLEVUE ARENA MEMORIAL PARK

21330 25 Ave,
Bellevue, AB T0K 0E0



CROWSNEST INDOOR PLAYGROUND

2802 222 St, Bellevue, AB
T0K 0E0
403-562-2360

<https://www.facebook.com/CNPIDP>



THE COMMUNITY

WINTERTIME IN CROWSNEST PASS



Top Winter Activities

Snowmobiling: The area features over 1,200 km of groomed and mapped sledding trails maintained by the CrowSnow Riders.

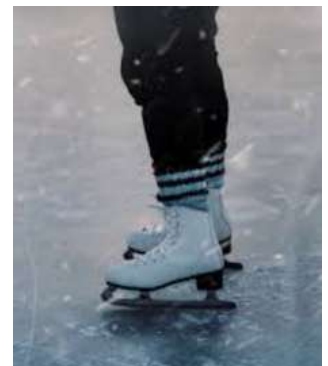
Downhill Skiing: Family-friendly and affordable alpine skiing and snowboarding are available at the Pass Powderkeg Ski Area in Blairmore.

Castle Mountain Resort offers activities all year long. Located in Pincher Creek. The skiing offers terrain for every level.

Nordic Skiing & Snowshoeing: The Allison Chinook Recreational Park offers groomed trails for cross-country skiing, while companies like Uplift Adventures guide off-the-beaten-path snowshoe tours.

Fat Biking: Rent fat bikes from local shops like Alpenland to hit dedicated mountain trails.

Ice Walking & Skating: Take a surreal, sub-30-minute winter hike or ice climb through the boulders of the Frank Slide or go wild ice skating on Crowsnest Lake.



THE COMMUNITY



LOCAL BUSINESSES ARE THE HEARTBEAT OF OUR COMMUNITY!

Let's celebrate the unique shops that make this neighbourhood special!



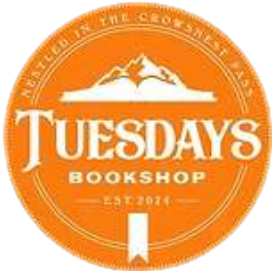
OPHELIA OUTPOST!

2501 213 St, Bellevue, AB

403-OPHELIA (674-3542)

Email: hello@opheliaoutpost.com

www.opheliaoutpost.com



TUESDAYS BOOKSHOP

2462 213 Street Bellevue, Alberta, TOK 0C0

403-583-1014

<https://www.tuesdaysbookshop.ca/>



CROWSNEST ADVENTURES

P.O. Box 513, Bellevue, Alberta, TOK 0C0

403-715-3061

Email: cnpadventures@shaw.ca

<https://www.crowsnestadventures.ca/>



CROCKETS TRADING CO.

2701 226th Street. Bellevue East Access

Crowsnest Pass, AB

403-564-4389

<https://www.crocketsgiftz.ca/>



CROWSNEST CONVENIENCE

2462-213 Street, Bellevue, Crowsnest Pass, Alberta

403-753-1001

THE COMMUNITY

LOCAL BUSINESSES ARE THE HEARTBEAT OF OUR COMMUNITY!

Bellevue is a tight-knit, historic community in the Crowsnest Pass with a unique mix of local artisan shops, outdoor adventure outfitters, and essential services. Whether you are hunting for regional crafts, a fresh bite, or historical experiences, Bellevue provides easy access to these locally owned establishments.

SURROUNDING CROWSNEST PASS HUBS

Just minutes away in the neighboring communities, you can access an even broader array of locally owned businesses to fulfill your shopping and service needs.



Crowsnest Community Market

Gazebo Park, Blairmore, AB T0K 0E0
<https://www.facebook.com/crowsnestcommunitymarket/>



GROCERIES

IGA - Blairmore AB

Crowsnest Mall, 11001 20 Ave, Blairmore, AB T0K 0E0



Save-On-Foods - Sparwood

113 Red Cedar Dr, Sparwood, BC V0B 2G0



Berta General Store, Crowsnest Pass

12319 20 Ave, Blairmore, AB T0K 0E0

The Crowsnest Pantry

11777 20 Ave, Blairmore, AB T0K 0E0

Emilio's Mercato Italiano

12849 20 Ave, Blairmore, AB T0K 0E0



THE COMMUNITY

SURROUNDING CROWSNEST PASS EATS

Just minutes away in the neighboring communities, you can enjoy a variety of restaurants, bars, coffee shops and fast food, here are a few...

Stone's Throw Cafe

13019 20 Ave, Blairmore, AB T0K 0E0

<https://www.stonethrowcafe.cafe/>

A&W Canada

15233 20 Ave, Blairmore, AB T0K 0E0

The Rum Runner

Restaurant and Pub

7902 20 Ave, Coleman, AB T0K 0M0

Tim Hortons

10501 20 Ave, Blairmore, AB T0K 0E0

Crowsnest Pass Pizza

11217 21 Ave, Blairmore, AB T0K 0E0



THE COMMUNITY

SURROUNDING CROWSNEST PASS EATS

The Cherry on Top Bakery and Koffie Shop

13149 20 Ave, Blairmore, AB T0K 0E0

Soo Blairmore

13609 20 Ave, Blairmore, AB T0K 0E0

Ben Wong Restaurant

13249 20 Ave, Blairmore, AB T0K 0E0

Charley Biggs' Chicken

11913 20 Ave, Blairmore, AB T0K 0E0

Spice Lounge and Pizza

11373 20 Ave, Blairmore, AB T0K 0E0

The Pass Beer Co.

10801 20 Avenue Blairmore, Crowsnest Pass, AB T0K 0E0

Spice Lounge and Pizza

11373 20 Ave, Blairmore, AB T0K 0E0

Dairy Queen Grill & Chill

10509 20 Ave, Blairmore, AB T0K 0E0

Cinnamon Bear Cafe

8342 20 Ave, Coleman, AB T0K 0M0

The Everest Pass Pub & Grill

8329 20 Ave, Coleman, AB T0K 0M0



THE COMMUNITY

SURROUNDING CROWSNEST PASS SHOPPING

Just minutes away in the neighboring communities, you can find various shops and services.

Summit Home Hardware

10701 20 Ave, Blairmore, AB T0K 0E0



The Gilded Haus Gift Boutique

12327 20 Ave, Blairmore, AB T0K 0E0



spry | Running Hiking Skiing Snowshoeing Crowsnest Pass

13101 20 Ave, Blairmore, AB T0K 0E0

The Gilded Haus Gift Boutique

12327 20 Ave, Blairmore, AB T0K 0E0



Alpenland Crowsnest Pass

13131 20 Ave, Blairmore, AB T0K 0E0

Merch on Main

13047 20 Ave, Blairmore, AB T0K 0E0

Crowsnest Candy Company Inc.

12146 20 Ave, Blairmore, AB T0K 0E0

Red Apple Stores

11001 20 Ave, Blairmore, AB T0K 0E0

Crowsnest Cafe & Fly Shop

8301 20 Ave, Coleman, AB T0K 0M0



THE COMMUNITY

SURROUNDING CROWSNEST PASS SHOPPING

Just minutes away in the neighboring communities, you can find various shops and services.

Bagatelle Thrift Store

8334 19 Ave, Coleman, AB T0K 0M0



Launstein Imagery Wildlife Art Gallery

12323 20 Ave, Blairmore, AB T0K 0E0



Kind RAT

12701 20 Ave, Blairmore, AB T0K 0E0



Work N Play Blairmore

13037 20 Ave, Blairmore, AB T0K 0E0

Whimsical Crystals & Metaphysical

12331 20 Ave #5B, Blairmore, AB T0K 0E0

Blairmore Liquor Store

12302 20 Ave, Blairmore, AB T0K 0M0

The Gilded Cup

12327 20 Ave, Blairmore, AB T0K 0E0

Magnolia Floral Studio

12331 20 Ave #5A, Blairmore, AB T0K 0E0



CROWSNEST PASS EMERGENCY SERVICES

Crowsnest Pass Fire Rescue Station 24

2113-2115 127 St, Blairmore, AB
T0K 0E0



Royal Canadian Mounted Police (RCMP)

2113-2115 127 St, Blairmore, AB T0K
0E0



MEDICAL SERVICES

Crowsnest Pass Health Centre 24 HOUR Emergency

2001 107 St, Blairmore, AB T0K 0E0
403-562-5011
<https://www.albertahealthservices.ca/findhealth/facility.aspx?id=3310>



Community Health Site/ Health Unit

Provincial Building, 12501 20 Ave, Blairmore,
AB T0K 0E0
403-562-5030
<https://www.albertahealthservices.ca/findhealth/Default.aspx>

Crowsnest Medical Clinic

11001 20 Ave #1, Blairmore, AB T0K 0E0
403-562-8804

Mountain Side Medical Clinic

2010 129 St, Blairmore, AB T0K 0E0
403-562-2292

CROWSNEST PASS SERVICES

DENTISTS

Crowsnest Dental

2132 129 St, Blairmore, AB T0K 0E0

403-562-2236

<https://crowsnestdental.com/>

Bite-Rite Denture Clinic

13331 20 Ave, Blairmore, AB T0K 0E0

403-562-2163



VETS

Bellevue Veterinary Clinic

2468 213 St, Bellevue, AB T0K 0E0

403-563-5400

<https://www.bellevuevet.ca/>

Pincher Creek Veterinary Clinic

1124 Waterton Ave, Pincher Creek, AB

T0K 1W0

403-627-3900

<https://pinchercreekvetclinic.ca/>



EYE CARE

Rocky Mountain Optometry

13119 20 Ave, Blairmore, AB T0K 0E0

403-562-7144

<https://rmoptometry.ca/>

PHARMACY

I.D.A. RX DRUG MART

12749 20 Ave, Blairmore, AB T0K 0E0

403-562-2725

Pharmasave Blairmore

12361 20 Ave, Blairmore, AB T0K 0E0

403-753-0034

Turtle Mountain Pharmacy Ltd

11001 20 Ave, Blairmore, AB T0K 0E0

403-562-8345

CROWSNEST PASS SERVICES

CHIRO, PHYSIO & MASSAGE + MORE

Magniphysio

2450 213 St, Bellevue, AB T0K 0E0

1-780-850-6364

<https://magniphysio.janeapp.com/>

Mind Over Mountain Massage

13221 17 Ave, Blairmore, AB T0K 0E0

403-715-3542

<https://mom-massage.janeapp.com/>

Liscombe Chiropractic

12525 20 Ave, Blairmore, AB T0K 0E0

403-564-4443

Shift2Health

13037B 20 Ave, Blairmore, AB T0K 0E0

403-609-1623

<https://shift2health.ca/>

Health Hub Inc.

5914 22 Ave, Coleman, AB T0K 0M0

403-563-1045

Alleviate Health & Wellness

12921 20 Ave, Blairmore, AB T0K 0E0

250-341-7535

<https://www.alleviatehealthwellness.com/>

Sparwood Chiropractic and Wellness

102 Red Cedar Dr, Sparwood, BC
V0B 2G1

1-250-425-6330

<https://www.sparwoodchiro.com/>

Chinook Essential Health

13037B 20 Ave, Blairmore,

AB T0K 0E0

403-563-8105

<https://www.chinookessentialhealth.ca/>

Crowsnest Acupuncture Clinic

11757 21 Ave, Blairmore, AB T0K 0E0

403-459-9000

<https://www.cnphealing.com/>

Hills Therapeutic Soft Tissue Clinic

12525 20 Ave, Blairmore, AB T0K 0E0

403-563-9377

<https://blairmoremassage.ca/>

THE COMMUNITY

SCHOOLS

<https://www.crowsnestpass.com/living-here/community-support/schools>



ÉCOLE DES GRANDS-VENTS, FRANCOPHONE - (GRADES K-6)

2802 222 Street, Bellevue, Alberta T0K 0C0
Phone: 587-203-2040



HORACE ALLEN SCHOOL - (GRADES K-3)

2006 - 76 Street
Coleman, Alberta T0K 0M0
Phone: 403-563-3998

<https://www.horaceallenschool.ca/>



ISABELLE SELLON SCHOOL - (GRADES 4-6)

12602 - 18 Avenue
Blairmore, Alberta T0K 0E0
Phone: 403-562-8816

<https://www.isabelle Sellonschool.ca/>



CROWSNEST CONSOLIDATED HIGH SCHOOL - (GRADES 7-12)

8901 - 20 Avenue
Coleman, Alberta T0K 0M0
Phone: 403-563-5651

<https://www.crowsnesthighschool.ca/>

