

Innisfail

4318 - 60TH AVENUE



Rick Easthope

403-999-1397

rick@themckelviigroup.com

www.themckelviigroup.com



THE MCKELVIE GROUP

CALGARY & AREA | REAL ESTATE

real
Real Broker

4318 - 60TH AVENUE INNISFAIL

Some homes are built. This one was made into something. Nestled on a quiet street in Innisfail, a community known for its rodeo heritage, walking trails, excellent schools, and that rare small-town ease that people spend their whole lives looking for. This four-bedroom blevel offers a lifestyle that is hard to manufacture and even harder to walk away from. And the location? You will not find neighbours across the street here, just the open green space of the local ball diamonds and recreational fields, with the arena just a short walk away. This is the kind of address that comes up maybe once in a generation. Step through the front door into a bright, open-concept main floor where laminate flooring flows seamlessly from the living room through to the dining area and into the kitchen, a space that genuinely rewards the way families gather. The oversized picture window in the living room frames that green space view perfectly, filling the room with natural light all day. The kitchen is anchored by custom oak cabinetry, a stainless-steel appliance package, and a breakfast bar island that pulls everyone in. The etched-glass pantry door opens to a walk-in pantry with floor-to-ceiling shelving, more storage than you will know what to do with, which is exactly the point. A built-in desk nook keeps life organized without stealing space. Step off the kitchen onto the expansive deck and the entertaining area simply doubles, big Alberta sky above, a staircase leading down to the lower brick patio and chiminea below, perfect for slow summer evenings with family & friends gathered around the fire. Upstairs, 2 bedrooms including a generous primary suite with access to the main bath featuring a jetted soaker tub & separate glass shower. Downstairs, the lower level is its own world, a cozy family room with a gas fireplace, two more bedrooms, a dedicated office, a full bathroom, a dedicated laundry room with a full LG washer & dryer set, and a spacious mudroom with direct access walking up to the double attached garage. The big updates are already done. A brand-new roof was installed in 2026, and the windows were replaced approximately five years ago, giving the next owners the peace of mind that comes with knowing the major items have been taken care of. And then there is the shop. Detached, fully finished, with in-floor heat, its own dedicated electrical panel, and a full overhead door, this is serious infrastructure for whoever needs it most. Whether your passion is woodworking, welding, or running a trade out of your home, this shop is ready for twelve months a year. The in-floor heat means you are comfortable from the first cold snap right through to the last frost of spring, and the overhead provides you the flexibility you need to introduce your materials. It earns its own conversation at every single showing. The backyard is mature, private, and full of character, curved garden beds, established cedars, a tucked-away garden shed. This is Innisfail living at its very best.

THE MCKELVIE GROUP

CALGARY & AREA | REAL ESTATE

real
Real Broker

THE MCKELVIE GROUP

CALGARY & AREA | REAL ESTATE



real
Real Broker

4318 60 Avenue Innisfail, AB T4G 1L2

Residential
Active [A2315524](#)

PD:

DOM: 0

LP: \$450,000.00

OP: \$450,000.00

Banner: *Welcome to 4318, Where Every Detail Has Been Lived In and Loved!*



Class:	Detached	City:	Innisfail
County:	Red Deer County	Subdivision:	Napoleon Lake
Type:	House	Ttl Beds:	4
Levels:	Bi-Level	F/H Bth:	2/0
Year Built:	1994	RMS SQFT:	1,073.87
LINC#:	0024376493	LP/SF:	\$419.05
Arch Style:	Bi-Level	Suite:	No
# Illegal Suite:	0	# Legal Suite:	0
Possession:	Negotiable		
Lot Dim:		Lot Size:	7527 SF 699.28 SM
Front Length:	19.16M 62` 10"	Lot Depth:	34.99 M 114.8'
Legal Pln:	9320297	Blk:	84
		Lot:	4
		Condo:	No
Zoning:	R-1C	Tax Amt/Yr:	\$3,378.00/2025
Title to Lnd:	Fee Simple	Loc Imp Amt:	
Disclosures:	No Disclosure	Front Exp:	SE
Restrict:	None Known		

Recent Change: **05/28/2026 : NEW**

Public Remarks: Some homes are built. This one was made into something. Nestled on a quiet street in Innisfail, a community known for its rodeo heritage, walking trails, excellent schools, and that rare small-town ease that people spend their whole lives looking for. This four-bedroom bi-level offers a lifestyle that is hard to manufacture and even harder to walk away from. And the location? You will not find neighbours across the street here, just the open green space of the local ball diamonds and recreational fields, with the arena just a short walk away. This is the kind of address that comes up maybe once in a generation. Step through the front door into a bright, open-concept main floor where laminate flooring flows seamlessly from the living room through to the dining area and into the kitchen, a space that genuinely rewards the way families gather. The oversized picture window in the living room frames that green space view perfectly, filling the room with natural light all day. The kitchen is anchored by custom oak cabinetry, a stainless-steel appliance package, and a breakfast bar island that pulls everyone in. The etched-glass pantry door opens to a walk-in pantry with floor-to-ceiling shelving, more storage than you will know what to do with, which is exactly the point. A built-in desk nook keeps life organized without stealing space. Step off the kitchen onto the expansive deck and the entertaining area simply doubles, big Alberta sky above, a staircase leading down to the lower brick patio and chiminea below, perfect for slow summer evenings with family & friends gathered around the fire. Upstairs, 2 bedrooms including a generous primary suite with access to the main bath featuring a jetted soaker tub & separate glass shower. Downstairs, the lower level is its own world, a cozy family room with a gas fireplace, two more bedrooms, a dedicated office, a full bathroom, a dedicated laundry room with a full LG washer & dryer set, and a spacious mudroom with direct access walking up to the double attached garage. The big updates are already done. A brand-new roof was installed in 2026, and the windows were replaced approximately five years ago, giving the next owners the peace of mind that comes with knowing the major items have been taken care of. And then there is the shop. Detached, fully finished, with in-floor heat, its own dedicated electrical panel, and a full overhead door, this is serious infrastructure for whoever needs it most. Whether your passion is woodworking, welding, or running a trade out of your home, this shop is ready for twelve months a year. The in-floor heat means you are comfortable from the first cold snap right through to the last frost of spring, and the overhead provides you the flexibility you need to introduce your materials. It earns its own conversation at every single showing. The backyard is mature, private, and full of character, curved garden beds, established cedars, a tucked-away garden shed. This is Innisfail living at its very best.

Directions:

Rooms & Measurements

	1P	2P	3P	4P	5P	6P		Main:	99.76	Mtr2	1,073.87	SqFt
Baths:	0	0	0	2	0	0	Bed Abv:	2	Blw Grade:	95.33	Mtr2	1,026.14
EnSt Bth:	0	0	0	0	0	0	Rms Abv:	5	Total AG:	99.76	Mtr2	1,073.87
											SqFt	

Garage Dims (L x W): 15` 1" x 21` 1"

Property Information

Basement:	Full	Laundry Ft:	In Basement
Basement Dev:	Finished	Basement Ft:	None
Heating:	Forced Air, Natural Gas	Cooling:	None
Construction:	Vinyl Siding, Wood Siding	Fireplaces:	1/Basement, Decorative, Free Standing, Gas
Foundation:	Wood	Flooring:	Carpet, Ceramic Tile, Laminate
Exterior Feat:	Private Yard, Storage	Fencing:	Fenced
Roof Type:	Asphalt Shingle	Patio/Porch:	Deck, Front Porch, Patio, See Remarks
Reports:	None		
Warranty:	None		
Parking:	Concrete Driveway, Double Garage Attached, Driveway, Front Drive, Garage Door Opener, Garage Faces Front, Oversized, See Remarks		
Features:	Central Vacuum, Laminate Counters, No Animal Home, No Smoking Home, Open Floorplan, Pantry		
Comm Feature:	Golf, Park, Playground, Pool, Schools Nearby, Shopping Nearby, Sidewalks, Street Lights, Tennis Court(s), Walking/Bike Paths		
Lot Features:	Back Lane, Back Yard, Front Yard, Interior Lot, Landscaped, Private, See Remarks, Street Lighting, Views		
Goods Include:	N/A		
Appliances:	Dishwasher, Dryer, Electric Stove, Garage Control(s), Range Hood, Refrigerator, Washer, Window Coverings		
Other Equip:	Garage Door Opener		
Goods Exclude:	N/A		
Outbuildings:	Shed, Shop/Office, Workshop		
Outbuild Desc:	Not all shops are created equal. This detached shop comes equipped with in-floor heat and a full overhead door, making it a genuine four-season workspace unlike anything you will find at this price point. Whether your passion is automotive work, woodworking, welding, or running a trade out of your home, this shop is ready for it. It also has its own dedicated electrical panel, giving you the power capacity to run serious equipment without compromise. Dream it, build it, fix it, create it. This shop makes it possible twelve months a year.		

THE MCKELVIE GROUP

CALGARY & AREA | REAL ESTATE



real
Real Broker

Rooms

Type	Level	Dimensions	Type	Level	Dimensions
4pc Bathroom	Main	7' 11" x 8' 5"	Bedroom	Main	9' 11" x 11' 9"
Dining Room	Main	7' 10" x 13' 1"	Kitchen	Main	12' 11" x 13' 1"
Living Room	Main	13' 1" x 12' 10"	Bedroom - Primary	Main	13' 6" x 12' 10"
4pc Bathroom	BSMT	4' 11" x 9' 1"	Bedroom	BSMT	10' 4" x 13' 7"
Bedroom	BSMT	12' 8" x 11' 0"	Laundry	BSMT	6' 11" x 5' 1"
Game Room	BSMT	13' 2" x 13' 5"	Furnace/Utility Roo	BSMT	7' 6" x 11' 0"
		2.41M x 2.57M			3.02M x 3.58M
		2.39M x 3.99M			3.94M x 3.99M
		3.99M x 3.91M			4.11M x 3.91M
		1.50M x 2.77M			3.15M x 4.14M
		3.86M x 3.35M			2.11M x 1.55M
		4.01M x 4.09M			2.29M x 3.35M



THE FLOOR PLAN



MAIN FLOOR:

EXTERIOR AREA: 1073.87 SQ. FT.

INTERIOR AREA: 1002.58 SQ. FT.

EXCLUDED AREA: 501.65 SQ. FT.



THE MCKELVIE GROUP

CALGARY & AREA | REAL ESTATE

real
Real Broker

THE FLOOR PLAN



BASEMENT (BELOW GRADE):

EXTERIOR AREA: 1026.14 SQ. FT.

INTERIOR AREA: 973.81 SQ. FT.

EXCLUDED AREA: 41.16 SQ. FT.



THE **MCKELVIE** GROUP

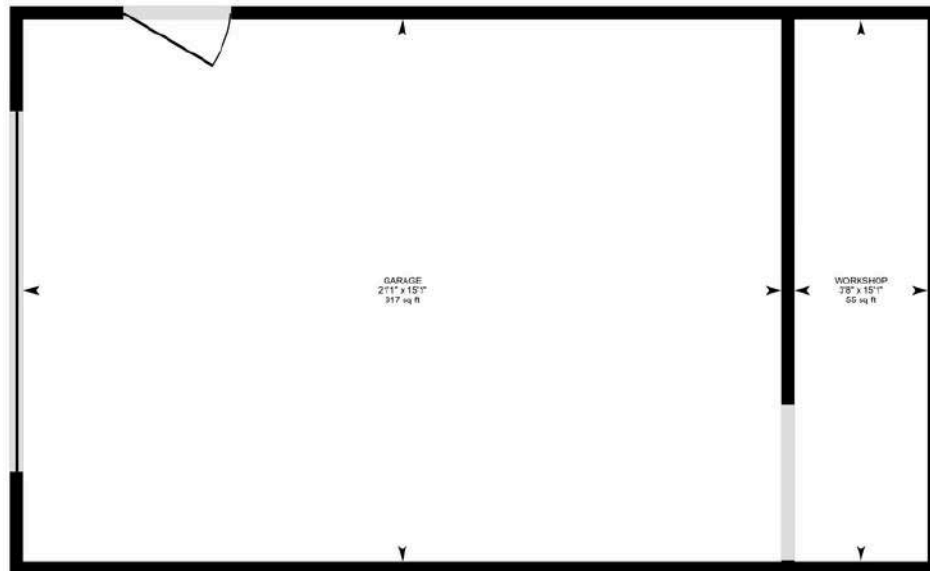
CALGARY & AREA | REAL ESTATE

real
Real Broker

THE FLOOR PLAN

DETACHED GARAGE:

EXCLUDED AREA: 393.78 SQ. FT.



ROOM DIMENSIONS

Main Building

MAIN FLOOR

4pc Bath: 7'11" x 8'5" | 62 sq ft
Bedroom: 9'11" x 11'9" | 102 sq ft
Dining: 7'10" x 13'1" | 102 sq ft
Garage: 21' x 23'6" | 440 sq ft
Kitchen: 12'11" x 13'1" | 148 sq ft
Living: 13'1" x 12'10" | 162 sq ft
Primary: 13'6" x 12'10" | 172 sq ft

BASEMENT

4pc Bath: 4'11" x 9'1" | 45 sq ft
Bedroom: 10'4" x 13'7" | 123 sq ft
Bedroom: 12'8" x 11' | 121 sq ft
Laundry: 6'11" x 5'1" | 36 sq ft
Rec Room: 13'2" x 13'5" | 177 sq ft
Utility: 7'6" x 11' | 82 sq ft

Detached Garage

DETACHED GARAGE

Garage: 15'1" x 21'1" | 317 sq ft
Workshop: 15'1" x 3'8" | 55 sq ft

Main Building

MAIN FLOOR

Interior Area: 1002.58 sq ft
Excluded Area: 501.65 sq ft
Perimeter Wall Thickness: 6.0 in
Exterior Area: 1073.87 sq ft

BASEMENT (Below Grade)

Interior Area: 973.81 sq ft
Excluded Area: 41.16 sq ft
Perimeter Wall Thickness: 6.0 in
Exterior Area: 1026.14 sq ft

Detached Garage

DETACHED GARAGE

All space is excluded

Total Above Grade Floor Area, Main Building

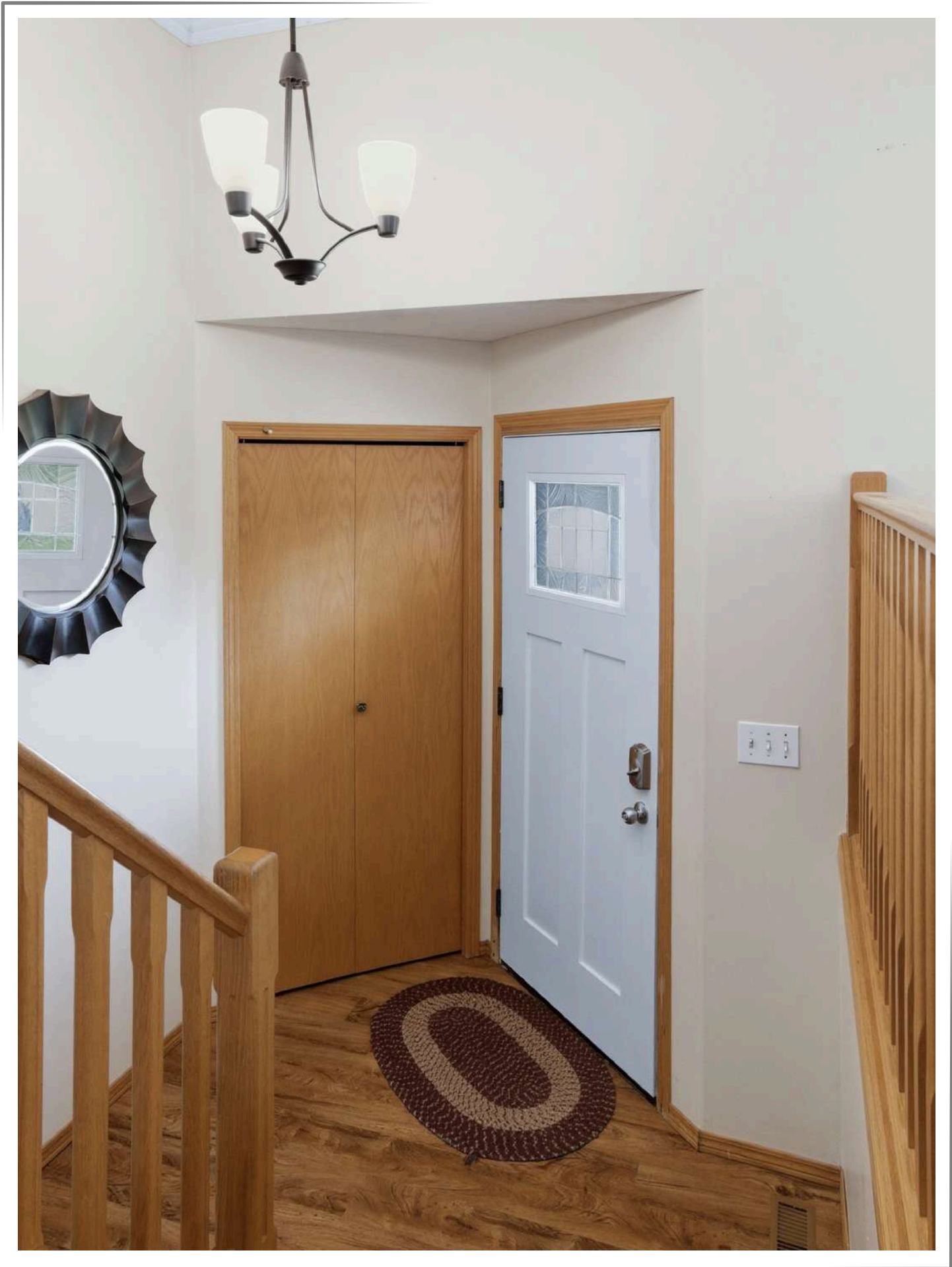
Interior Area: 1002.58 sq ft
Excluded Area: 501.65 sq ft
Exterior Area: 1073.87 sq ft

Total Above Grade Floor Area, Detached Garage

Excluded Area: 393.78 sq ft

























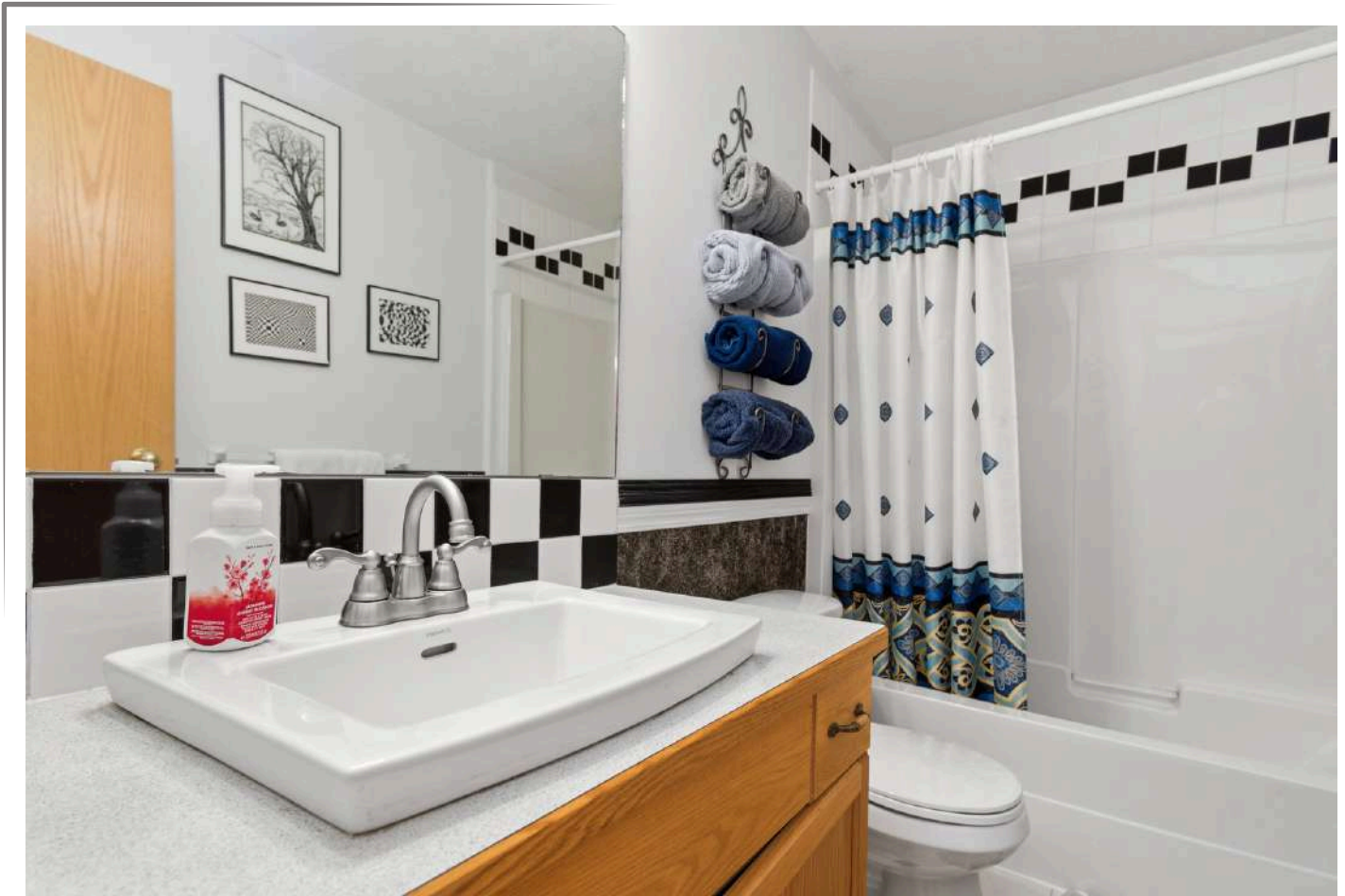


























WELCOME TO

INNISFAIL



THE **MCKELVIE** GROUP

CALGARY & AREA | REAL ESTATE

real
Real Broker

THE COMMUNITY

WELCOME TO INNISFAIL

Innisfail (/ˈɪnɪsfeɪl/ IN-is-fayl) is a town in central Alberta, Canada. It is located in the Calgary-Edmonton Corridor, south of Red Deer at the junction of Highway 2 and Highway 54.



HISTORY

The town's name comes from an Irish-language epithet for Ireland, Inis Fáil, "Isle of Destiny". Before this name was adopted, the town was often referred to as "Poplar Grove". Sandy Fraser, Napoleon Remillard, Arthur Content and Bill Kemp settled in the area from 1884 to 1887. These were Innisfail's first settlers. Dr. Henry George was an important physician and coroner for Calgary and Central Alberta. He settled in Innisfail and built a house he called "Lindum Lodge" (this is where the Dr. George/Kemp house is today). Later the house was occupied by Bill Kemp and Kate Jane Kemp, who ran it as a boarding house until the 1960s. More people continued to move to the Innisfail area. The construction of the railroad attracted more settlers and business. One of the first businessmen in the area was G. W. West. He is very important to Innisfail's past as he ran a general store, meat market, and grocery store. He was Innisfail's first proprietor when he moved here in 1891. By the 1900s, Innisfail was a village. Some of the early businesses included the Union Bank, the Murray Hotel, Hotel Alberta, the New York Café, the Modern Café, the Paris Café, the Opera House and the West Store.

THE COMMUNITY

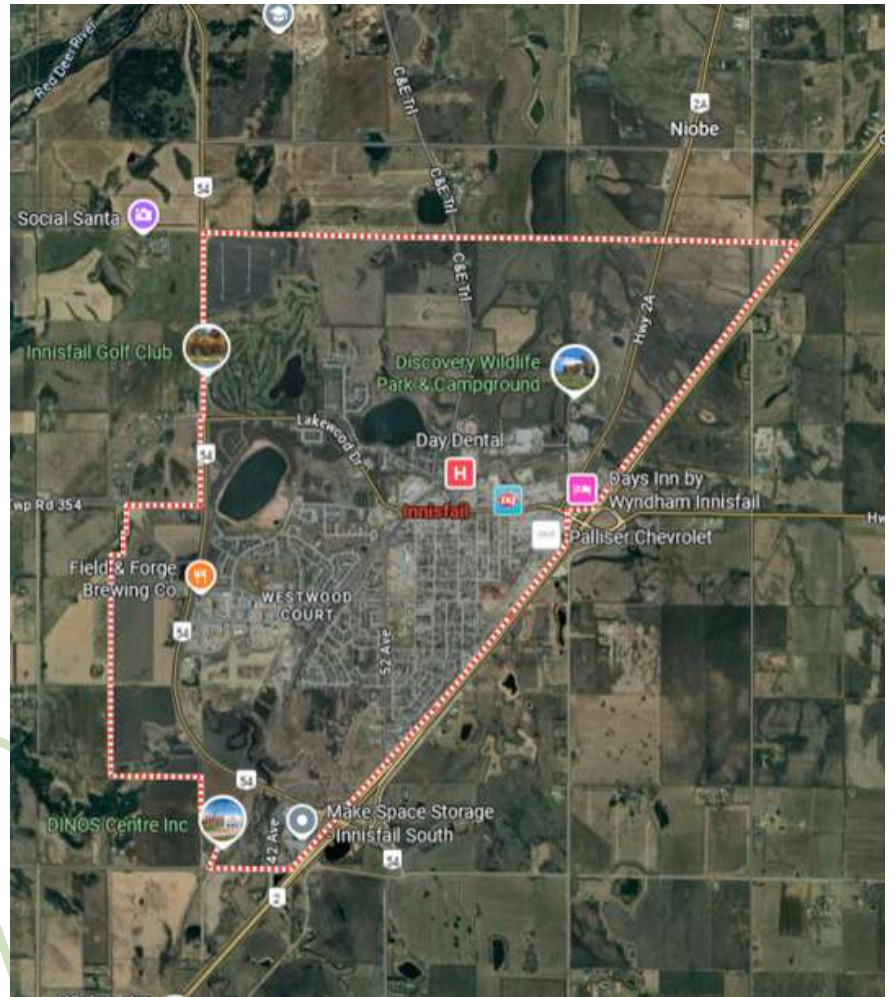
THE TOWN OF INNISFAIL

4943 – 53 Street

Innisfail, AB, T4G 1A1

Phone: 403-227-3376

Website: <https://innisfail.ca/>



THE COMMUNITY

LOCAL AREA ACTIVITIES

DISCOVERY WILDLIFE PARK

The most exciting wildlife facility you'll ever visit! It provides 'forever' homes for orphaned wildlife and any zoo animals in need of a home! Daily presentations with amazing animals make the facility unique in the zoo world.

5400 42 Ave., Innisfail, AB

403-227-3211

<https://discoverywildlifepark.com/>



INNISFAIL PRO RODEO

Every year, the Daines Rodeo Ranch hosts the Innisfail Professional Rodeo, which is held in mid-June, and has run consecutively for many years, drawing rodeo fans and cowboys from across Western Canada and the U.S.

Box 6283, Innisfail, AB

<https://dainesranch.ca/>



LIBRARY & LEARNING CENTRE

Innisfail is home to a state-of-the-art Library and Learning Centre. This beautiful facility not only houses an extensive Library and research area, it also provides a great space for community programs.

5300 55 St. Cl., Innisfail, AB

403-227-4407

<https://innisfail.ca/recreation/library-learning-centre/>



LOCAL AREA ACTIVITIES

DINOS CENTRE INC.

DINOS (Discovery Institute of Nature, Origins, and Science) Centre Inc. is a unique recreation and learning centre located just outside of Innisfail. DINOS is a safe and fun environment for families and friends to learn and play together.

6500 Cotton Wood Rd., Innisfail, AB

403-593-4667

<https://www.dinoscentre.ca/index.html>



AQUATIC CENTRE

Visitors and residents can cool off, get in shape or just have fun using our pool, hot tub and sauna.

5117 42 St., Innisfail, AB

403-227-2924

<https://innisfail.ca/recreation/aquatic-centre-spray-park/>



SPRAY PARK

Cool off on a warm summer's day at the Innisfail Spray Park! Conveniently located behind the Innisfail Aquatic Centre the park is open free of charge during the summer months.

5117 42 St., Innisfail, AB

403-227-2924

<https://innisfail.ca/recreation/aquatic-centre-spray-park/>



THE COMMUNITY

LOCAL AREA ACTIVITIES

INNISFAIL BOWLING LANES

Fun for all ages! Innisfail Bowling Lanes is an eight-lane, five-pin bowling house complete with adult leagues, Club55+ leagues, youth bowling programs and more. Call to book your special events, birthday parties, corporate events and private events.

5039 50 St., Innisfail, AB

403-227-5342

<https://www.innisfailbowling.ca/>



CENTURY THEATRE

The top-of-the-line movie presentation system serves customers in Innisfail and surrounding areas.

4939 50 St., Innisfail, AB

403-227-0044

<https://cinemacenturytheatre.com/>



NAPOLEON LAKE/CENTENNIAL PARK

Experience nature. Enjoy bird watching, embark upon a leisurely stroll, or simply lay back and admire all that Mother Nature has to offer in one of them most idyllic natural areas in all of Central Alberta. The adjoining Centennial Park offers prime picnic and playground facilities, making the site a must-visit for nature lovers of all ages.

50 Street & 60 Avenue, Innisfail, AB

403-227-3376

<https://innisfail.ca/recreation/parks-trails/>



LOCAL AREA ACTIVITIES

INNISFAIL SKI HILL

The Innisfail Ski Hill offers plenty for all ages and abilities. There are six main runs ranging from beginner to intermediate and also features a rail park. Located in a central position, the tow rope provides easy access to all parts of the hill. The ski hill is operated by volunteers and is a great amenity to the community.

60 Street Innisfail, Alberta T4G 1R6

<https://www.innisfailskihill.com/>



NAPOLEON LAKE DISC GOLF COURSE

Located near Centennial Park, and around the off-leash dog park in a public, multi-use park, the current 9-hole Napoleon Lake Disc Golf Course offers the perfect space for learning a new sport like disc golf!



RIVER FLOAT

Spend a day relaxing on the water in one of the region's most popular summer pastimes! Begin your adventure at the site of the Innisfail Bridge located just west of town, and disembark at one of a number of sites along the Red Deer River. A unique way to see and experience the area!



LOCAL PARKS & PLAYGROUNDS



THE COMMUNITY

GOLF & COUNTRY CLUBS

INNISFAIL GOLF CLUB

A world class 27-hole facility, this course has developed into one of Alberta's finest.

Innisfail, 6080 Lakewood Dr

403-227-3444

<https://www.innisfailgolf.ca/>



BOWDEN GOLF COURSE

This nine hole golf course is ideal for family or friends looking for a relaxing afternoon of golf. Located adjacent to Highway 2 South at Bowden.

Bowden, just off Hwy 2A

403-224-2121

<https://bowdengolf.com/>



GLENIFFER LAKE & COUNTRY CLUB

Located on Gleniffer Lake, this lakeshore resort includes a nine hole golf course and beautiful club house with dining facilities.

35468 Range Rd 30, Red Deer County, AB

1-888-728-0010

<https://glenifferlakegolf.com/>



WHISPERING PINES GOLF & COUNTRY CLUB RESORT

Located on the banks of Pine Lake, this beautiful resort includes an 18 hole, 72 par golf course with strategically placed hazards that challenge golfers.

Pine Lake

403-886-5111

<https://www.whisperingpines.ab.ca/>



THE COMMUNITY

MUSEUMS & GALLERIES

INNISFAIL & DISTRICT HISTORICAL VILLAGE

One of the largest museums in Central Alberta, the Historical Village also hosts numerous special events during summer months. The Innisfail and District Historical Village opened in 1972, and began preserving and housing the history of Innisfail.

5139 42 Street, Innisfail, AB
403-227-2906

<https://innisfailhistoricalvillage.ca/>



BOWDEN PIONEER MUSEUM

Located in Bowden, Alberta, the museum provides Guided Tours, free with admission and are always available while the Museum is open.

2201 19 Ave, Bowden
403-224-2122

<https://www.travelalberta.com/listings/bowden-pioneer-museum-3813>



HISTORIC MARKERVILLE

The Markerville Creamery Museum is a glimpse into the past of this scenic Icelandic settlement. Built in 1902 and restored to its 1932 appearance, the Creamery remains the “Hub” of this tiny community. Costumed interpreters offer guided tours during the spring and summer season. Visitors also enjoy the “Kaffistofa” coffee shop.

Markerville, 114 Creamery Way
403-728-3006

<https://www.historicmarkerville.com/>



THE COMMUNITY

MUSEUMS & GALLERIES

STEPHANSSON HOUSE PROVINCIAL HISTORIC SITE

Costumed interpreters help to bring the Stephansson story to life, with original furnishings, newspaper wallpaper, the smell of baking, and the poetry of Stephansson himself.

2230 Twp Rd 371, Red Deer County, Alberta
403-728-3929

<https://stephanssonhouse.ca/>



DICKSON STORE MUSEUM

1930's style General Store that sold groceries, hardware, dry goods, and included a Post Office. Costumed interpreters take you into the past as you tour the restored store, post office, and living quarters.

1928-2nd Avenue, DICKSON, Alberta
403-728-3355

<https://www.dicksonstoremuseum.com/>



DANISH CANADIAN NATIONAL MUSEUM & GARDENS

7 acres of traditional Danish gardens and attractions highlighted by a man-made lake featuring the Little Mermaid, an Island Castle & Drawbridge and a small Danish Church. The museum and grounds are bordered by natural walkways and beautiful flower gardens.

Dickson, Range Rd 31
403-728-0019

<https://www.danishcanadianmuseum.com/>



THE COMMUNITY

SPORTS & REC

ARENAS & OUTDOOR SKATING

<https://innisfail.ca/recreation/arenas-outdoor-skating/>

INNISFAIL TWIN ARENA

Address: 5804 – 42 Street

Phone: 403-227-2735

Email: arena@innisfail.ca



OUTDOOR SKATING

NORTH SIDE OF THE ARENA
(Boarded Rink & Skating Loop)
5804 – 42 Street

BOARDED ARENA
37 Street and 54 Avenue

CENTENNIAL PARK
Access from 50 Street (rink located beside cookhouse)



CURLING RINK

The Innisfail Curling Rink is under the management of the Innisfail Curling Club. Please contact them directly for rentals, leagues and programs. For Ice Rental Information, call 403-227-3079.

ARENA SPORTS & CLUBS

- Innisfail Minor Hockey Association
- Innisfail Skating Club
- Innisfail Eagles
- Mavericks Elite Lacrosse Club
- Innisfail Minor Lacrosse Association

Book the Innisfail Arena or another Town Facility for your next event! Call 403-227-3376.

THE COMMUNITY

SPORTS & REC

<https://innisfail.ca/community-recreation-programs/sports-rec/>

REGISTERED PROGRAMS

Some Town of Innisfail programs require advanced notice and registration to participate. Register online at www.innisfail.ca/programs searching the activity number or name.

POLICING & SAFE COMMUNITY COMMITTEE

The Innisfail Policing & Safe Community Committee was created in 2019 as a means of employing a collaborative approach to community safety. With the aim of fostering the development of a safe and secure community, the committee acts as a link between and among Innisfail Town Council, Innisfail RCMP, Community Peace Officers, community members and other stakeholders. The committee will convene multiple times over the course of the next year to discuss and collaborate with authorities on some of the most important community safety issues as identified through ongoing public engagement.

Innisfail RCMP Complaint Line - Report an Issue: 403-227-3341

Information Line (non-complaint): 403-227-3342

Email: Kinnisfailadmin@rcmp-grc.gc.ca

To report a crime through the RCMP online service [Click Here](#)

FIRE DEPARTMENT

FIRE HALL

4949 49 Street, Innisfail

Direct Line: 403-227-5800

Email: firechief@innisfail.ca

If you're experiencing an emergency, call 9-1-1



THE COMMUNITY

LOCAL MARKETS & GROWERS

Running from May to September, the seasonal Innisfail markets are a thriving community of individuals with so much to offer. With fresh Farm-to-Table produce, home-baked treats, and a showcase of talented crafters, artists and entertainers, it's well worth making it a regular stop in the week.

<https://innisfail.ca/area-attractions/local-markets-growers/>



MARKET ON MAIN

Starting in June, The Innisfail & District Chamber of Commerce will host the Market on Main on a weekly basis throughout the summer. Join us every Tuesday at the Innisfail Legion from 3:00 pm to 7:00 pm for fresh produce, food trucks, and vendors from town and around the region.

INNISFAIL FARMERS MARKET

The Innisfail Farmers Market, ran by the Innisfail & District Agriculture Society, happens on Thursdays at the Innisfail Legion Auditorium from May 16 to September 26.

GROWERS

EDGAR FARMS

RR3, INNISFAIL, ALBERTA T4G 1T8

403-227-2443

<https://www.edgarfarms.com/>

THE JUNGLE FARM

INNISFAIL, 28120 TOWNSHIP ROAD 362, RED

DEER COUNTY

403-227-4231

<https://thejunglefarm.com/>



THE COMMUNITY

GROWERS

PEARSONS BERRY FARM

BOWDEN, HIGHWAY 587 & RANGE ROAD 40

403-224-3011

<https://pearsonsberryfarm.ca/>



NIXON HONEY FARM

35566 RANGE ROAD 263

RED DEER COUNTY, AB

403-227-2719

<https://nixonhoney.ca/>



BOWDEN SUN MAZE & EAGLE CREEK FARM

34531 RR14 RED DEER COUNTY, AB

403-224-3995

<https://sunmaze.ca/>

The Bowden SunMaze is located in the organic fields of Eagle Creek Farms and is a great family venue for local outdoor enjoyment and for taking family photos. The farm also provides 3 acres of organic u-pick flowers and vegetable produce.



SHOPS & SERVICES

GROCERIES

CO-OP FOOD STORE

4303 50 ST #1, INNISFAIL, AB T4G 1B6

403-227-4888

<https://www.centralalbertaco-op.crs/sites/centralalberta/>

PAUL'S NOFRILLS INNISFAIL

5080 43 AVE, INNISFAIL, AB T4G 1P7

1-866-987-6453

<https://www.nofrills.ca/en/store-locator/details/7487>

There are plenty of options for shops, restaurants and services in the area. Here are a few of the shops in Innisfail. For a full list, please go to the business directory website:

<https://vch.innisfail.ca/VCH/city/busdirectory/bldirectoryinquiry.aspx>

49TH STREET EMPORIUM

1 4944 49 STREET INNISFAIL , AB

403-865-1999

BELLZER BOYZ INC - NAPA AUTO PARTS

4720 50 STREET INNISFAIL , AB

403-227-2950

COMMUNITY THRIFT CENTRE

5028 50 STREET INNISFAIL , AB

403-865-0040

FREAKS FOR ANTIQUES

5044 50 STREET INNISFAIL , AB

403-227-3046

INNISFAIL FURNITURE & APPLIANCE LTD.

5215 50 AVENUE INNISFAIL , AB

403-227-5207

INNISFAIL HOME HARDWARE

4612 50 STREET INNISFAIL , AB

403-227-3303

JACKSON'S DRUG STORE LTD.

5011 49 STREET INNISFAIL , AB

403-227-3500

MAINSTREET UNIQUE

116, 117 4804 50 STREET INNISFAIL , AB

587-484-9079

OLD CREAMERY ANTIQUE'S

UNIT 5 5112 49 AVENUE INNISFAIL , AB

403-865-1002

THE GIFT LOFT INC

5004 50 STREET INNISFAIL , AB

403-227-3505

THE COMMUNITY

SHOPS & SERVICES

PHARMACIES

SHOPPER'S DRUG MART

5060 43 AVENUE INNISFAIL , AB
587-542-2300

PHARMASAVE JACKSON'S RX CENTRE

4890 52 ST #101, INNISFAIL, AB
403-865-1030

SANDSTONE IDA

4804 50 ST, INNISFAIL, AB
403-227-1111

SANDSTONE PHARMACIES INNISFAIL

4620 50 AVE, INNISFAIL, AB
403-227-5211

LOBLAW PHARMACY

5080 43 AVE, INNISFAIL, AB
403-227-5037

RESTAURANTS & COFFEE

PETROS PIZZA & STEAKHOUSE

4923 46 AVENUE INNISFAIL , AB
403-865-1010

STARBUCKS

4824 46 AVE, INNISFAIL, AB

MCDONALD'S

4203 50 ST, INNISFAIL, AB

RESTAURANTS & COFFEE

TIM HORTONS

4411 50 ST, INNISFAIL, AB

ATHABASCA COFFEE ROASTERS

UNIT 19 4804 42 AVENUE INNISFAIL , AB
587-872-3516

BOSTON PIZZA INNISFAIL

5014 40 AVENUE INNISFAIL , AB
403-227-0573

CANADIAN PIZZA UNLIMITED

105 4804 50 STREET INNISFAIL , AB
403-227-2271

D & R DRIVE IN

4730 50 STREET INNISFAIL , AB

DAIRY QUEEN

4503 50 STREET INNISFAIL , AB

FOX & HOUND / MULLIGANS PIZZA

5039 49 STREET INNISFAIL , AB
403-227-2333

INNISFAIL GRILL & CHILL

5120 49 STREET INNISFAIL , AB
403-227-6200

INNISFAIL SUBWAY

4927 50 STREET INNISFAIL , AB

MO'S FAMILY RESTAURANT LTD.

5012 50 STREET INNISFAIL , AB
403-865-0085

THE COMMUNITY

SHOPS & SERVICES

GAS & CONVENIENCE

MOBIL

5040 43 AVE, INNISFAIL, AB

FAS GAS SHORT STOP

5107 50 STREET INNISFAIL , AB

CO-OP GAS BAR

4303 50 ST, INNISFAIL, AB

G&B FUELS

5136 50 ST, INNISFAIL, AB

CIRCLE K

5204 41 ST, INNISFAIL, AB

7-ELEVEN

4952 52 ST, INNISFAIL, AB

WAYPOINT CONVENIENCE

5040 43 AVE, INNISFAIL, AB

PETS

HARLEY'S HUTCH

RAW PET FOOD & PET SUPPLIES

3952 49 AVE, INNISFAIL, AB

PET VALU

4303 50 ST #8, INNISFAIL, AB



BARS & LOUNGES

STAGECOACH LOUNGE

4704 42 AVE, INNISFAIL, AB

FIELD & FORGE BREWING CO.

3775 61 AVE, INNISFAIL, AB

BOOTS & BARRELS RESTAURANT & BAR

4920 47 AVE, INNISFAIL, AB

THE ZOO

5120 49 ST, INNISFAIL, AB

FOX & HOUND AND MULLIGANS PIZZA

5039 49 ST, INNISFAIL, AB

DARK WOODS BREWPUB AND COFFEE ROASTING

4720 50 ST, INNISFAIL, AB

BOSTON PIZZA

5014 40 AVE, INNISFAIL, AB

LIQUOR STORES

ACE LIQUOR DISCOUNTER INNISFAIL

4800 50 ST, INNISFAIL, AB

COLD BEER OUTLET/7 DAY LIQUOR

5120 49 ST, INNISFAIL, AB

CO-OP LIQUOR STORE

4919 47 AVE, INNISFAIL, AB

WILD TIM'S LIQUOR STORE

4919 50 ST, INNISFAIL, AB

SERVICES

MEDICAL

INNISFAIL HEALTH CENTRE & EMERGENCY DEPARTMENT

OPEN 24 HOURS

5023 42 ST, INNISFAIL, AB
403-227-7800

<https://www.albertahealthservices.ca/findhealth/facility.aspx?id=1000315>

MEDICAL CLINIC (INNISFAIL)

4804 50 ST UNIT 128, INNISFAIL, AB
403-227-3356

PHARMACY CARE CLINIC BY SHOPPERS DRUG MART

5060 43 AVE, INNISFAIL, AB T4G 1S6
587-542-2300

DENTIST

INNISFAIL DENTAL CENTRE

4935 49 ST, INNISFAIL, AB
403-227-3011

<https://innisfaildentalcentre.ca/welcome/>

DAY DENTAL

4890 52 ST UNIT 201, INNISFAIL, AB
403-227-0228

<https://www.daydental.ca/>

INNISFAIL FAMILY DENTAL

4935 50 ST, INNISFAIL, AB T4G 1N2
403-227-6666

<https://www.innisfaildental.ca/index.php/contact/>

INNISFAIL DENTURE CLINIC INC.

4912 52 ST, INNISFAIL, AB T4G 1S7
403-227-5979



VETS

INNISFAIL VETERINARY SERVICE LTD.

5239 50 St, Innisfail, AB
403-227-3535

<https://innisfailvetservices.ca/>

POPLAR GROVE VETERINARY SERVICES

4408 42 Ave, Innisfail, AB T4G 1P6
403-227-4701

<https://poplargrovetvet.com/>

CHIRO, PHYSIO & MASSAGE

INNISFAIL CHIROPRACTIC & MASSAGE

4407 49 St #1, Innisfail, AB
403-227-1777

<https://innisfailchiro.ca/>

PHYSIOTHERAPY -HEALTHY FAMILY CHIROPRACTIC INNISFAIL

5028 49 St, Innisfail, AB
403-865-0704

<https://healthyfamilychiropractic.ca/>

THE COMMUNITY

EDUCATION

Innisfail offers educational opportunities ranging from pre-school to Grade 12. Students can choose both academic or trades/career streams throughout their secondary education. Post-secondary opportunities are available within driving distance or online.

SCHOOLS

École John Wilson Elementary School

Pre-Kindergarten to Grade 4

[Visit Website](#)

St. Marguerite Bourgeoys Catholic School

Pre-Kindergarten to Grade 9

[Visit Website](#)

Innisfail Middle School

Grades 5 to 8

[Visit Website](#)

Innisfail High School

Grades 9 to 12

[Visit Website](#)

Innisfail Career High School

Grades 9 to 12

[Visit Website](#)



POST-SECONDARY EDUCATION

OLDS COLLEGE

4500 - 50th Street, Olds

Phone number: 403-556-8281

Website: www.oldscollege.ca

RED DEER POLYTECHNIC

100 Donald Blvd, Red Deer, AB T4R 0V5

Phone number:

403.342.3400

1.888.732.4630

Website: <https://rdpolytech.ca/>