



# 34 WOLFBACK TERRACE

SAUSALITO, CALIFORNIA

**OBIE BOWMAN'S  
"COPE HOUSE"**

[Cope-House.com](http://Cope-House.com)



**SCAN ME**

Simply hold up your phone's camera to visit the property's website.

Perched in the hills above Sausalito in a gated community abutting miles of parkland, offering world-class views from Belvedere and Tiburon across the East Bay to the iconic skyline of San Francisco, this modern retreat, designed by noted architect Obie Bowman of "Sea Ranch" fame, pulls the outdoors in with his design, emphasizing a combination of views, warm architecture, fine construction and proximity to both Sausalito and San Francisco that is rarely seen in the Bay Area. From three levels of tremendous glass windows, one can unwind watching the constant activity on the Bay from about 750 feet above sea level from anywhere in the home or on the decks. In this serene setting you feel at peace with the surrounding nature - bordering the Golden Gate National Recreation Area, a jewel of a park with hiking, biking, and horse trails on which to enjoy the vistas. Timeless materials including douglas fir, composite concrete smooth as silk, and steel are used throughout the home to create a harmonious flow and a casual luxurious feeling. The main level includes a skylit open space for living/dining/kitchen/deck perfect for entertaining friends and family. Upper level is presently used as two home offices, each with birds eye views, and a half bath. Lower level is complete with two en-suite bedrooms, with media room and a bedroom opening to another deck. Interior access leads to the three car garage with storage, plus two car driveway and another parking pad. With awe-inspiring views and an exclusive gated community enclave, this trophy residence awaits its fortunate new owners to enjoy for years to come.



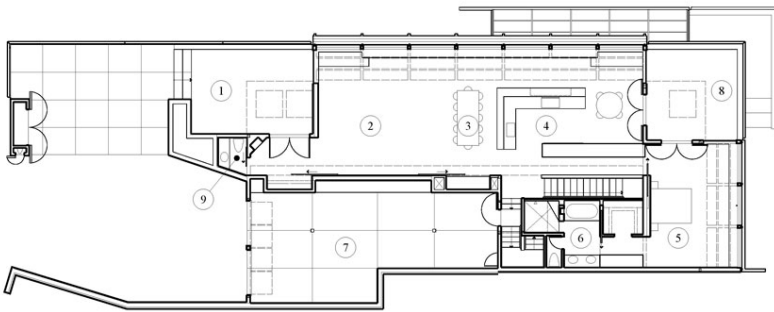
**COLDWELL  
BANKER**

c 831.214.1990  
TimAllenProperties.com  
CalBRE#00891159



**TIM ALLEN  
PROPERTIES**

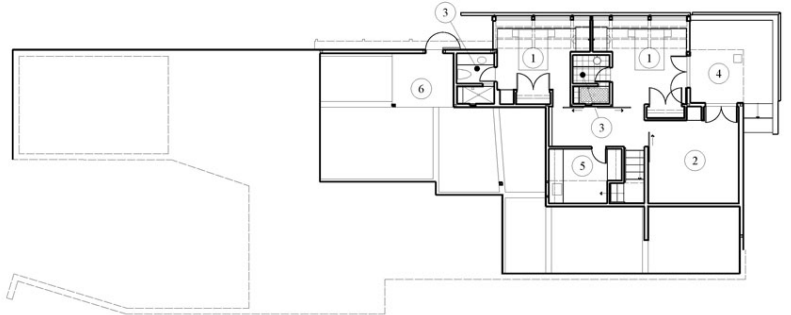
# FLOOR PLAN



ENTRY LEVEL FLOOR PLAN



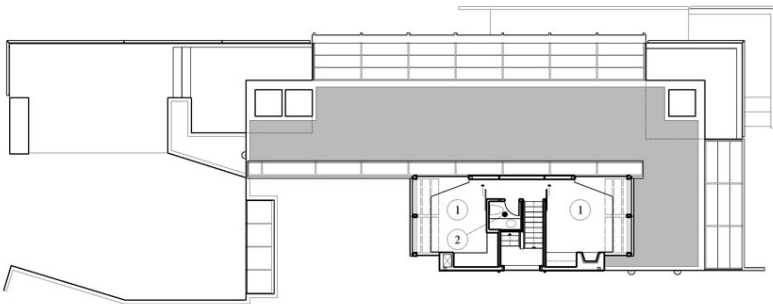
- 1 ENTRY COURT
- 2 LIVING
- 3 DINING
- 4 KITCHEN
- 5 MASTER BEDROOM
- 6 BATH
- 7 GARAGE
- 8 DECK
- 9 POWDER



LOWER LEVEL FLOOR PLAN



- 1 BEDROOM
- 2 FAMILY
- 3 BATH
- 4 DECK
- 5 LAUNDRY
- 6 MECHANICAL



UPPER LEVEL FLOOR PLAN



- 1 OFFICE
- 2 POWDER

## SPECIFICS



3 Bedrooms



4 Bathrooms



4,217 SqFt



.69 Acres

Heat: ..... Central

Garage: ..... 776 SqFt

Fireplaces: ..... 2

Year Built: ..... 2012