



3187 17 MILE DR

PEBBLE BEACH, CALIFORNIA

BREATHTAKING MEDITERRANEAN ESTATE

PebbleBeachParadise.com
\$18,900,000



SCAN ME

Simply hold up your
phone's camera to visit
the property's website.

Located on Pebble Beach's renowned 17-mile drive near the world-famous Lone Cypress, this breathtaking estate on 2.6 private acres of mature cypress and live oaks includes an impressive list of luxuries and the highest quality materials and construction. The modern Mediterranean home faces southwest, allowing abundant natural light to spill through floor-to-ceiling windows and expansive outdoor living spaces to watch the sunsets. Highlights include 5 bedrooms with a luxurious primary suite, 5 full and 2 half bathrooms, a full guest or caretaker's apartment with its own private parking and keyed entrance, a putting green, 9 custom stone fireplaces, soaring ceilings with exposed beams, a gourmet kitchen with breakfast bar/island and 2 Bosch French door wall ovens, elevator access to all 3 floors, AC and full house generator, bonus rooms, a smart home system, and beautiful filtered ocean views throughout most of the home. Walking distance to The Lodge and Cypress Point with ~10,000 SqFt of comfortable living space to entertain friends and family, this paradise in Pebble Beach is a rare offering for turnkey, modern living just minutes to all the incredible amenities the Monterey Peninsula offers.

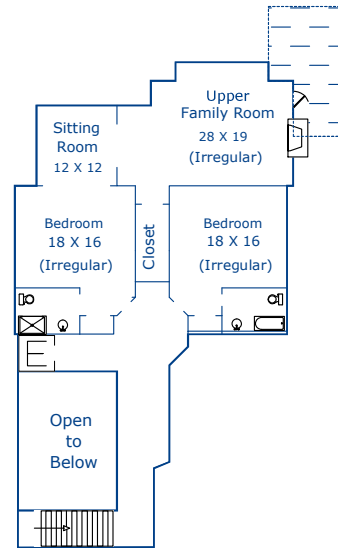
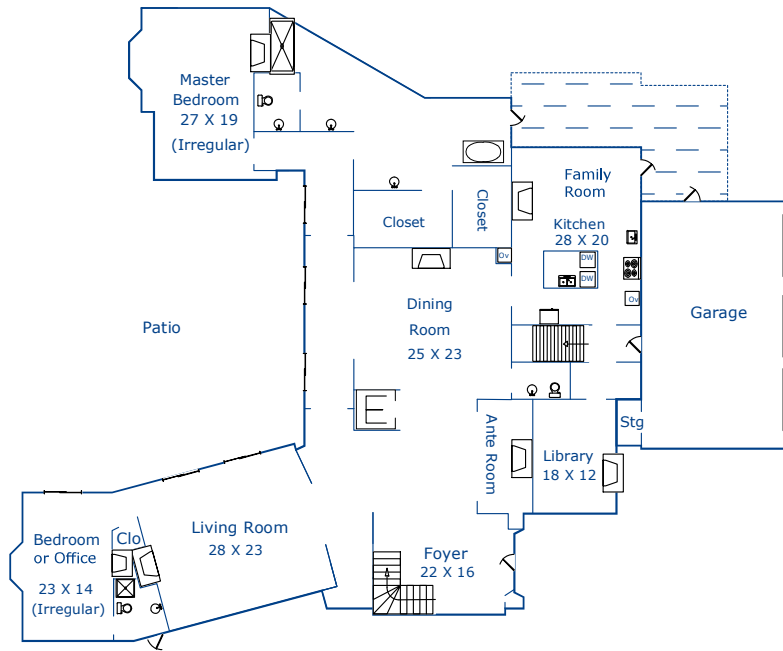


**COLDWELL
BANKER**

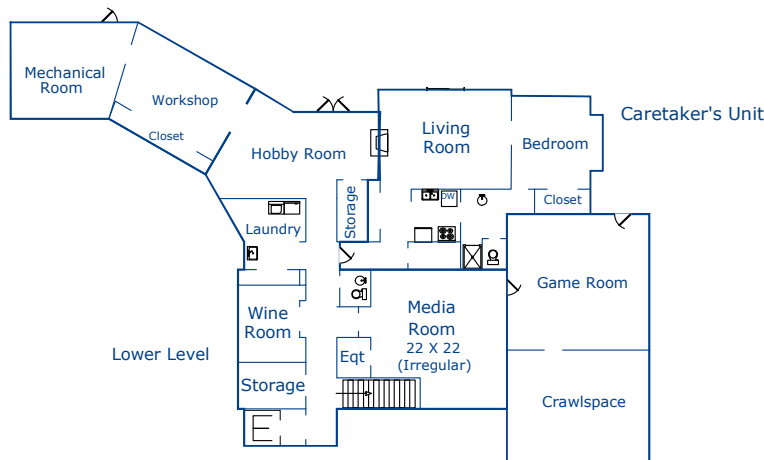
831.214.1990 | DRE#00891159
TimAllenProperties.com
Team@TimAllenProperties.com



TIM ALLEN
PROPERTIES TEAM



Upper Level



Lower Level

Caretaker's Unit

FLOOR PLAN

Main Living Area - 5911sf
 Upper Level - 2195sf
 Lower Level - 1662sf
 Caretaker's Unit - 924sf
Total - 10692sf

Game Room - 506sf
 Workshop/Mech - 602sf
 Garage - 970sf

Square foot calculations are based on dimensions provided by the client using architectural drawing by Jun Sillano, AIA, 06/17/2014
 Stated dimensions and square footage are a representation and should be verified by the buyer.

SPECIFICS



5 Bedrooms



5 Full, 2 Half Bathrooms



10,692 SqFt



2.61 Acres

Interior: Plaster

Exterior: Stone, Stucco

Fireplace: 9, Natural Stone

Heat & A/C: Central Forced Air

Roof: Clay

Floors: Hardwood, Travertine

Garage: 3-Car

Year Built: 2019