



## 603 GIBSON AVENUE

PACIFIC GROVE, CALIFORNIA

### PACIFIC GROVE JEWEL

\$1,299,000

[PacificGroveJewel.com](http://PacificGroveJewel.com)



#### SCAN ME

Hold up your phone's camera to visit the property's website.

This charming single-level residence is set in a desirable, centrally located Pacific Grove neighborhood, just minutes from downtown, local schools, and the coastline. The 1,352 square foot layout includes three bedrooms and two bathrooms arranged with an easy, natural flow. Wood-laminate flooring runs throughout the main living areas, while the living room is highlighted by vaulted, open-beam ceilings and a wood-burning fireplace with a gas starter. Recent updates include fresh interior paint, a remodeled hall bathroom, and a newer composition shingle roof. The 4,100 square foot lot features an oversized detached two-car garage with ample space for storage or a workshop, along with a backyard deck for outdoor enjoyment. This is a well-maintained home in a location that captures the best of Pacific Grove living.



**COLDWELL  
BANKER**

831.214.1990 | DRE#00891159  
[TimAllenProperties.com](http://TimAllenProperties.com)  
[Team@TimAllenProperties.com](mailto:Team@TimAllenProperties.com)

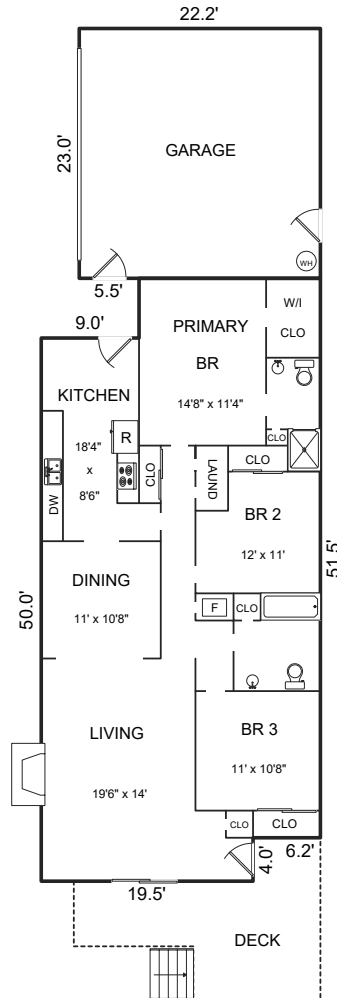


**TIM ALLEN**  
 PROPERTIES TEAM

The property information herein is derived from various sources that may include, but not be limited to, county records and the Multiple Listing Service, and it may include approximations. Although the information is believed to be accurate, it is not warranted and you should not rely upon it without personal verification. ©2024 Coldwell Banker. All Rights Reserved. Coldwell Banker and the Coldwell Banker logos are trademarks of Coldwell Banker Real Estate LLC. The Coldwell Banker® System is comprised of company owned offices which are owned by a subsidiary of Anywhere Advisors LLC and franchised offices which are independently owned and operated. The Coldwell Banker System fully supports the principles of the Fair Housing Act and the Equal Opportunity Act.

# FLOOR PLAN

AREA CALCULATIONS (approximate)	
First Floor:	1,352sf
Net Livable Area:	1,352sf
Garage:	501
Deck:	220



This model is for use as a visual tool only. Some measurements are estimates. Therefore, no appraisal value should be inferred.

## SPECIFICS



3 Bedrooms



2 Bathrooms



1,352 SqFt



4,100 SqFt

Interior: ..... Drywall

Exterior: ..... Cement Board Siding

Fireplace: ..... 1

Heat: ..... Central Forced Air

Roof: ..... Composition Shingle

Floors: ..... Laminate

Garage: ..... 2-Car

Year Built: ..... 1966

**2.5% Buyers Brokerage Compensation** | Brokerage Compensation not binding unless confirmed by separate agreement among applicable parties.