

TA  
**TIM ALLEN**  
PROPERTIES TEAM



5 Wyndemere Vale, Monterey

**MONTEREY HAVEN**

---

MontereyHaven.com









## MONTEREY HAVEN

---

### 5 Wyndemere Vale, Monterey

Nestled in the serene enclave of Monterey, 5 Wyndemere Vale offers the perfect blend of luxury, comfort, and convenience. This beautifully maintained single-level home is a peaceful retreat just moments from all the attractions of the Monterey Peninsula. Step inside to discover a thoughtfully remodeled interior featuring a stylish kitchen and updated baths, designed for both elegance and functionality. Expansive windows frame sweeping views of the iconic Skyline Forest, bringing nature's beauty indoors. The home's seamless indoor-outdoor flow invites you to unwind in a private courtyard with a cozy gas fire pit—ideal for evening gatherings under the stars. The surrounding gardens are lush and vibrant, complete with a charming chicken coop that adds a touch of rustic charm. Whether you're seeking tranquility or accessibility, this property offers the best of both worlds. Minutes from world-class golf, fine dining, coastal trails, and Carmel-by-the-Sea, 5 Wyndemere Vale is your gateway to effortless Peninsula living. Experience peaceful luxury at its finest—schedule your private tour today.



**MONTEREYHAVEN.COM**

*Hold up your phone's camera to the QR code to visit the property's website and pricing.*

**2.5% Buyers Brokerage Compensation** | Brokerage Compensation not binding unless confirmed by separate agreement among applicable parties.

Presented by TIM ALLEN, COLDWELL BANKER GLOBAL LUXURY



## ENTRANCE & FRONT PATIO









## LIVING ROOM















## PROPERTY INFORMATION

---

TOTAL SQUARE FOOTAGE:	1,982 SqFt
LOT SIZE:	12,425 SqFt
NUMBER OF BEDROOMS:	3
NUMBER OF BATHS:	2
INTERIOR:	Plaster
EXTERIOR:	Wood
HEAT:	Central Forced Air
FIREPLACE:	1
ROOF:	Wood Shakes / Shingles
FLOORS:	Hardwood, Carpet, Tile
GARAGE:	2-Car
YEAR BUILT:	1970





## OUTDOOR DECK









# KITCHEN

















## DINING AREA & DECK









## PRIMARY BEDROOM SUITE









## BEDROOMS TWO & THREE









## GARAGE & STORAGE ROOM









## OUTDOOR PATIO, COOP, & GARDENS









# FLOOR PLAN

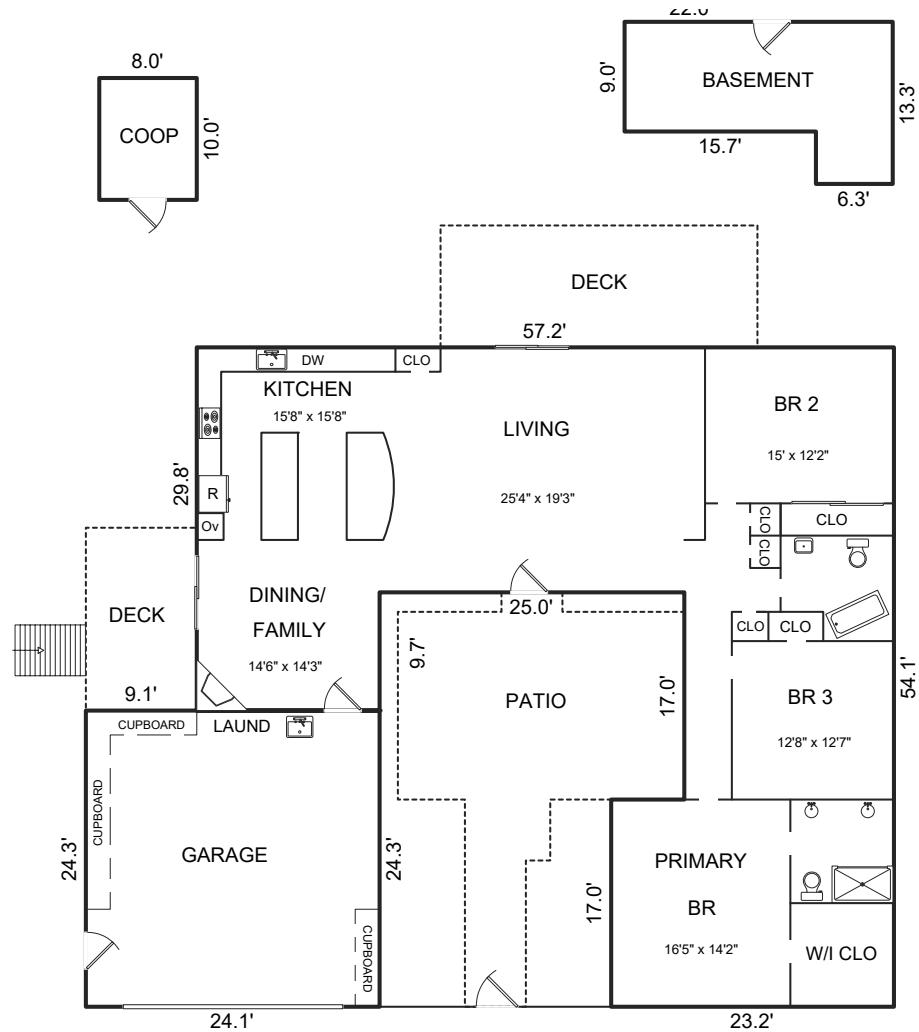
LIVING AREA  
1,982 SqFt

GARAGE  
586 SqFt

PATIO  
465 SqFt

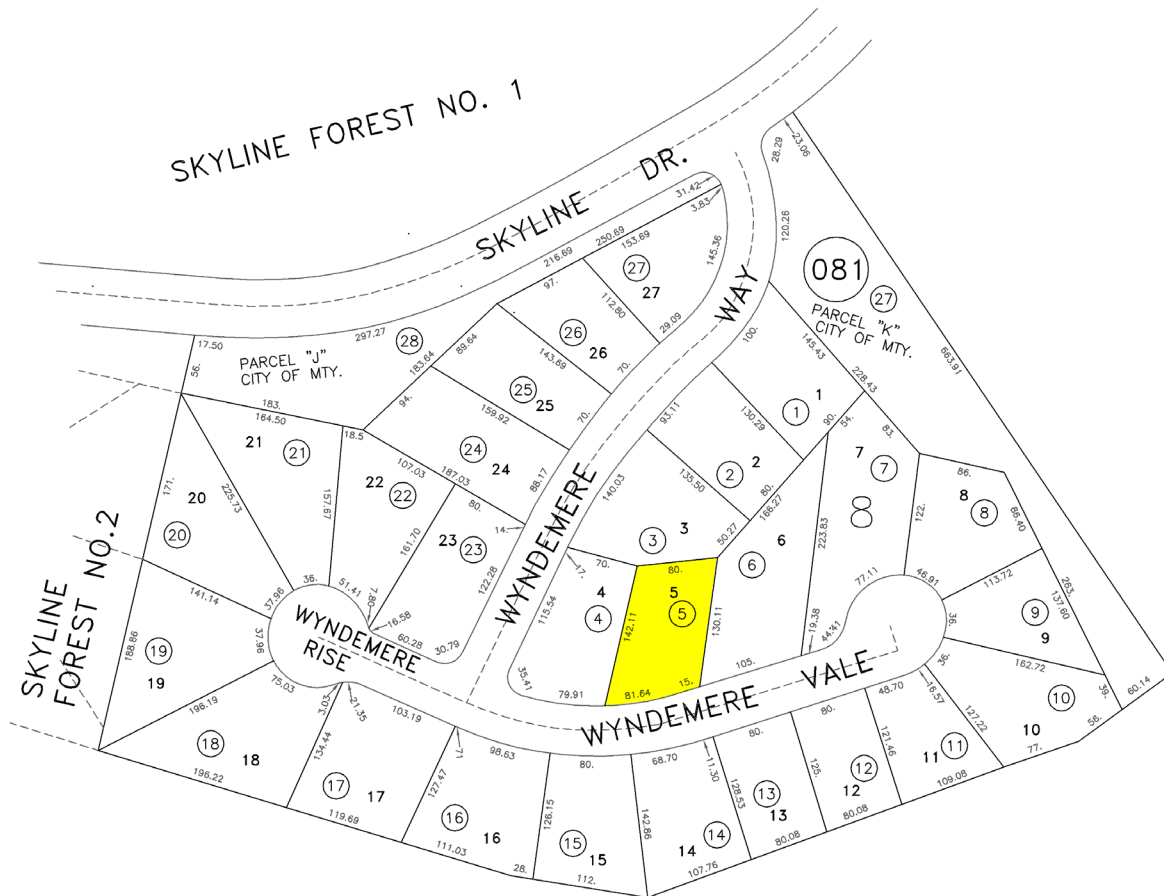
DECK  
250 SqFt

DECK  
137 SqFt





# PARCEL MAP



SCALE 1 in. = 100 FT.





**COLDWELL  
BANKER**

831.214.1990

[TimAllenProperties.com](https://www.TimAllenProperties.com)

[Team@TimAllenProperties.com](mailto:Team@TimAllenProperties.com)

DRE#00891159



**TIM ALLEN**  
PROPERTIES TEAM

The property information herein is derived from various sources that may include, but not be limited to, county records and the Multiple Listing Service, and it may include approximations. Although the information is believed to be accurate, it is not warranted and you should not rely upon it without personal verification. ©2024 Coldwell Banker. All Rights Reserved. Coldwell Banker and the Coldwell Banker logos are trademarks of Coldwell Banker Real Estate LLC. The Coldwell Banker® System is comprised of company owned offices which are owned by a subsidiary of Anywhere Advisors LLC and franchised offices which are independently owned and operated. The Coldwell Banker System fully supports the principles of the Fair Housing Act and the Equal Opportunity Act.