



420 BONNIE BRAE

SANTA CRUZ, CALIFORNIA

EXCEPTIONAL SANTA CRUZ GATED ESTATE

\$4,500,000

[SantaCruzSerenity.com](https://www.SantaCruzSerenity.com)



SCAN ME

Hold up your phone's camera to visit the property's website.

Situated on nearly 5 private acres of picturesque land, this exceptional gated estate offers a unique combination of luxury and sustainability. The 4,700 SqFt modern Craftsman-style home includes 5 bedrooms and 3.5 baths, an open-concept living area, a gourmet kitchen, soaring ceilings, and idyllic indoor/outdoor living. Perfect for entertaining, the expansive outdoor spaces consist of a pristine pool, 423 SqFt cabana/ADU, outdoor kitchen, stone fireplace, hot tub, and a lush lawn. The whole-home automatic commercial generator and well with a 10k-gallon water storage system allow for a self-sufficient lifestyle. Located near Santa Cruz's world-class beaches, hiking and mountain biking trails, shopping, and dining, this estate provides a wonderful balance of privacy and convenience.

Next door 55-acre vineyard and equestrian facilities for sale separately:
3980 Bonny Doon Rd



**COLDWELL
BANKER**

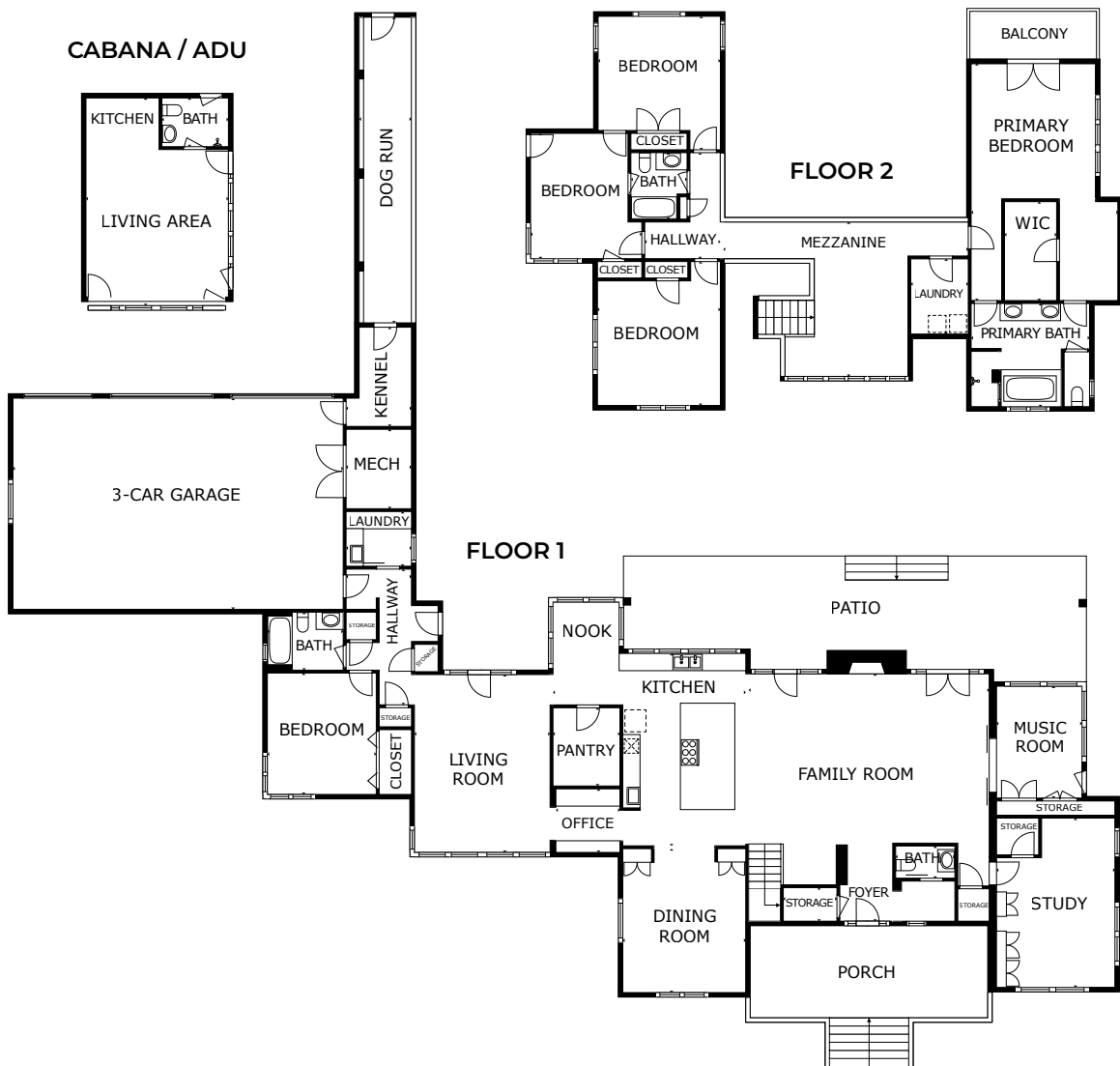
831.214.1990 | DRE#00891159
[TimAllenProperties.com](https://www.TimAllenProperties.com)
Team@TimAllenProperties.com



TIM ALLEN
PROPERTIES TEAM

The property information herein is derived from various sources that may include, but not be limited to, county records and the Multiple Listing Service, and it may include approximations. Although the information is believed to be accurate, it is not warranted and you should not rely upon it without personal verification. ©2024 Coldwell Banker. All Rights Reserved. Coldwell Banker and the Coldwell Banker logos are trademarks of Coldwell Banker Real Estate LLC. The Coldwell Banker® System is comprised of company owned offices which are owned by a subsidiary of Anywhere Advisors LLC and franchised offices which are independently owned and operated. The Coldwell Banker System fully supports the principles of the Fair Housing Act and the Equal Opportunity Act.

FLOOR PLAN



This model is for use as a visual tool only. Some measurements are estimates. Therefore, no appraisal value should be inferred.

SPECIFICS



5 Bedrooms



4 Full, 1 Half Bathrooms



5,123 SqFt



4.86 Acres

Interior:Vertical Grain Douglas Fir

Exterior:Cedar Shingles

Fireplace:1 Indoor, 1 Outdoor

Heat:Radiant

Roof:Composition

Floors:White Oak

Garage:3-Car

Year Built:2008

2.5% Buyers Brokerage Compensation | Brokerage Compensation not binding unless confirmed by separate agreement among applicable parties.