

## 4847 BIXBY CREEK ROAD

CARMEL, CALIFORNIA

### BIXBY CREEK RANCH - LUXURIOUS BIG SUR RETREAT

BixbyCreekRanch.com  
\$17,950,000



#### SCAN ME

Simply hold up your  
phone's camera to visit  
the property's website.

Just a short drive from Carmel-by-the-Sea and Pebble Beach, Bixby Creek Ranch provides a one-of-a-kind family compound with possibly the best views and setting on the Central Coast. The property includes over 9,300 SqFt of living space across 4 main structures: the main house, guest cottage, library/studio, and a beautiful pre-Civil War era barn from Ohio that was meticulously deconstructed and re-milled to its current exquisite state. The parcel includes 78 acres adjoining an additional 255 glorious acres of private preserve with true panoramic views spanning from iconic Bixby Bridge, rolling Santa Lucia Mountains, and the endless Pacific Ocean to the west. The property also includes fully permitted plans for two additional guest houses, a garage, and an infinity pool on the point overlooking Bixby Bridge. One could spend years walking the trails, exploring the land, and never experience the same day... witness heavenly cloud banks floating below, walk to several vista points, each with uniquely unobstructed views, and host friends and family from your choice of wonderful indoor/outdoor living spaces all thoughtfully designed by renowned architect, Mary Ann Schicketanz. Bixby Creek Ranch is a legacy property the likes of which is rarely seen and offers a serene, comfortable lifestyle sure to inspire daily from sunrise to sunset.



**COLDWELL  
BANKER**

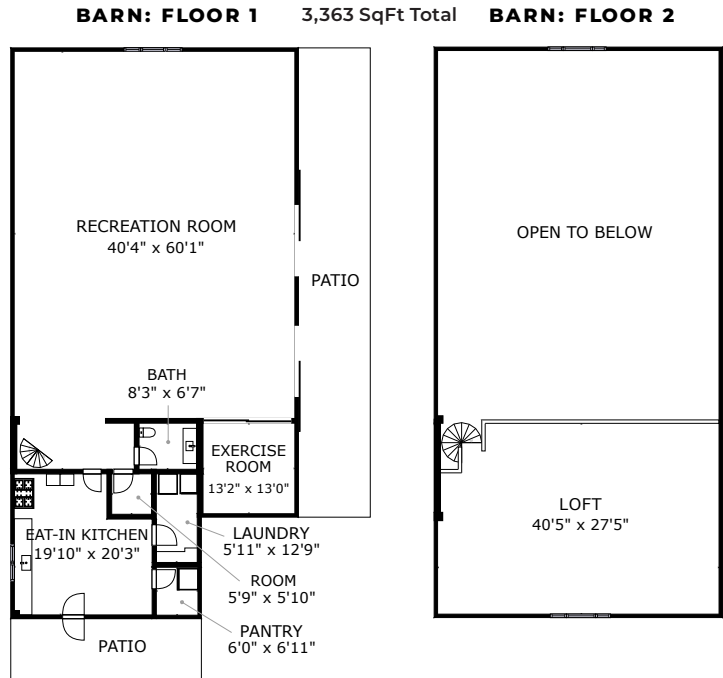
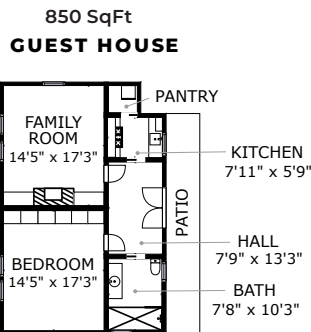
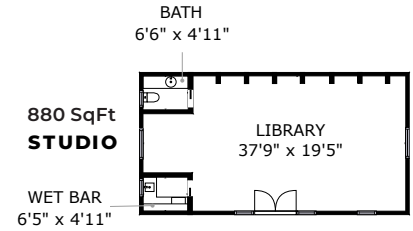
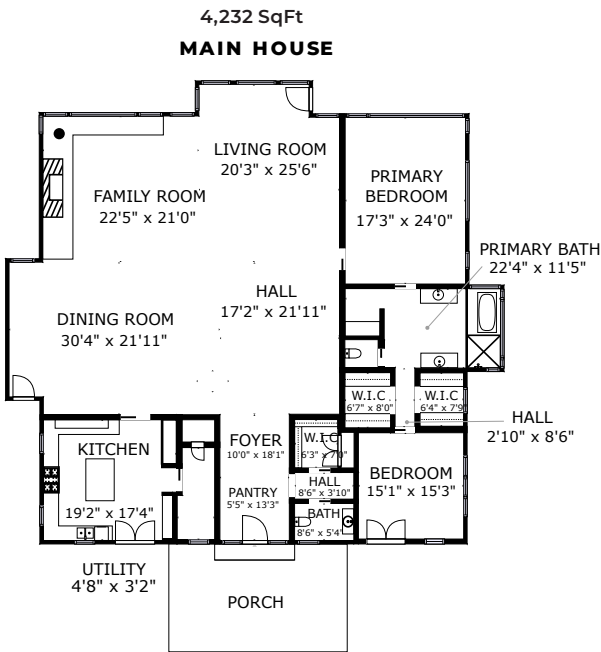
c 831.214.1990 | CalBRE#00891159  
TimAllenProperties.com  
Team@TimAllenProperties.com



**TIM ALLEN**  
PROPERTIES TEAM

The property information herein is derived from various sources that may include, but not be limited to, county records and the Multiple Listing Service, and it may include approximations. Although the information is believed to be accurate, it is not warranted and you should not rely upon it without personal verification. ©2024 Coldwell Banker. All Rights Reserved. Coldwell Banker and the Coldwell Banker logos are trademarks of Coldwell Banker Real Estate LLC. The Coldwell Banker® System is comprised of company owned offices which are owned by a subsidiary of Anywhere Advisors LLC and franchised offices which are independently owned and operated. The Coldwell Banker System fully supports the principles of the Fair Housing Act and the Equal Opportunity Act.

# FLOOR PLAN



GROSS INTERNAL AREA  
TOTAL: 9,325 sq. f

SIZES AND DIMENSIONS ARE APPROXIMATE, ACTUAL MAY VARY.

## SPECIFICS



6 Bedrooms



2 Full, 3 Half Baths



9,325 SqFt



78 Acre Lot

Interior:..... Plaster  
Exterior:..... Wood  
Heat:..... Radiant  
Fireplaces:..... 1

Roof:..... Metal  
Floors:..... Hardwood  
Year Built:..... 2015

**2.5% Buyers Brokerage Compensation** | Brokerage Compensation not binding unless confirmed by separate agreement among applicable parties.