



23805 EAST CLIFF DRIVE

SANTA CRUZ, CALIFORNIA

PLEASURE POINT PERFECTION

PerfectionOnThePoint.com

\$3,500,000



SCAN ME

Simply hold up your
phone's camera to visit
the property's website.

Perfectly Positioned on Pleasure Point. With one of Santa Cruz's best surf spots just outside your front door, this front line property offers the ideal location. Owned by the same family for multiple generations, this classic oceanfront property is now available for the next storied chapter. The 1,196 sf main house offers 3 bedrooms and two baths on a single level, and the charming 353 sf ADU building is actually a converted 2-story water tank storage tower. Also included is a spacious detached two-car garage. All of this on a generous 11,021 sf parcel. Make plans for a spectacular oceanfront project or just grab your board, walk outside and enjoy one of Santa Cruz's most historic surf locations. End the day overlooking Monterey Bay and relaxing to a perfect sunset with Pleasure Point as your front yard.



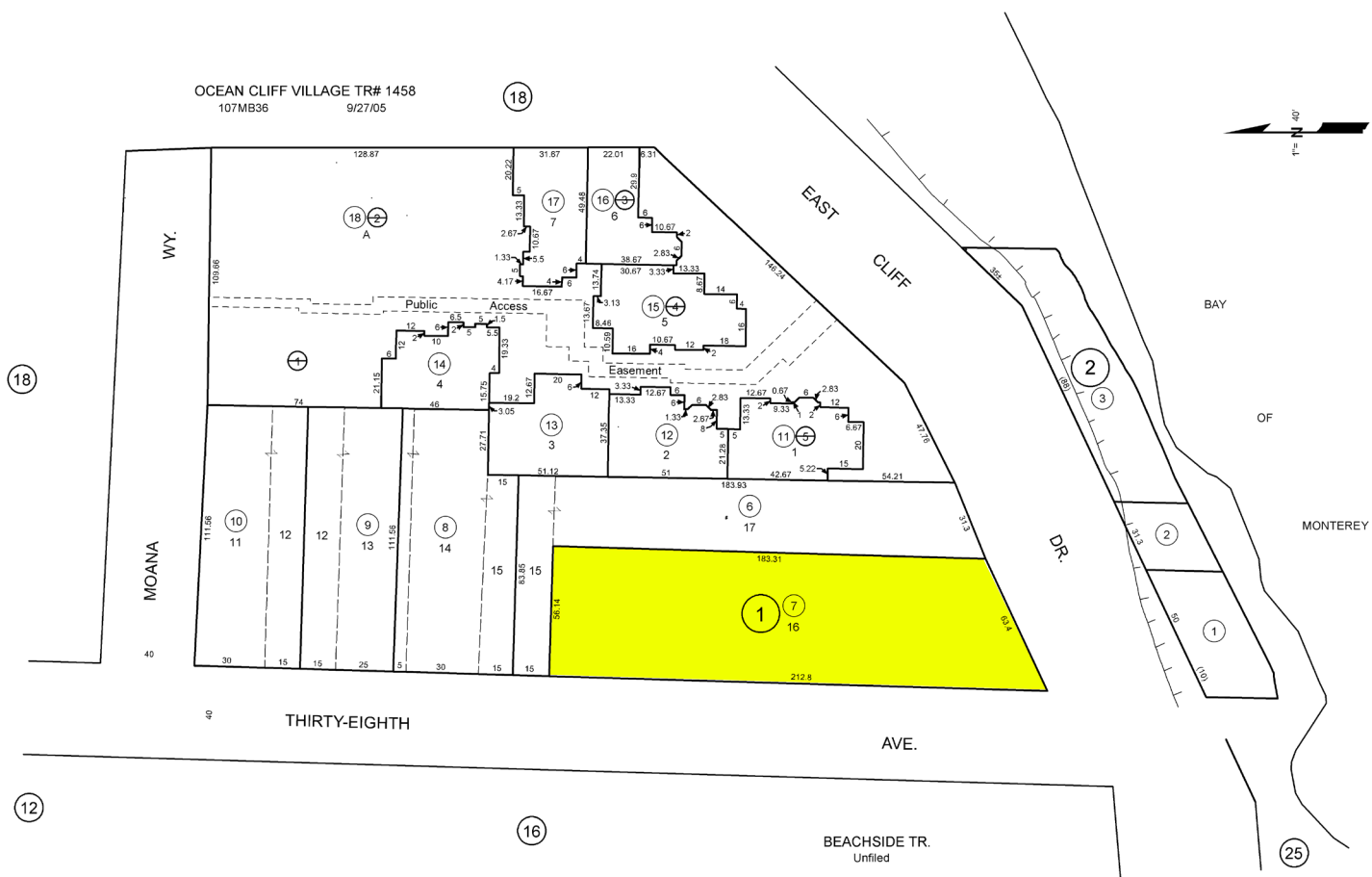
**COLDWELL
BANKER**

831.214.1990 | DRE#00891159
TimAllenProperties.com
Team@TimAllenProperties.com



TIM ALLEN
PROPERTIES TEAM

PARCEL MAP



SPECIFICS



4 Bedrooms



2 Full, 1 Half Bathrooms



1,546 SqFt



0.25 Acres

Interior: Plaster

Exterior: Stucco

Fireplace: 1

Heat: Central Forced Air

Roof: Concrete

Floors: Hardwood

Garage: 2-Car

Year Built: 1924