



## 9 MESA TRL

CARMEL, CALIFORNIA

### PRESERVE LOT WITH PLANS

CarmelLot.com  
\$2,200,000



#### SCAN ME

Simply hold up your  
phone's camera to visit  
the property's website.

Presenting an incredible opportunity to build your dream home on ~20 acres of land in the Santa Lucia Preserve with its world-class amenities just minutes away. The property includes approved plans by renowned architect and artist, Tom Meany. The designs are beautifully incorporated with the land to showcase the stunning views of the mountains, meadows, and mature oaks studding the rolling hills, and the parcel is approved for full equestrian facilities. The California Modern Farmhouse style home includes 5 bedrooms, 5 full and 2 half baths, a luxurious primary suite with dual bathrooms and walk-in closets, gourmet kitchen with wine bar, an office, gym, den, 3-car garage, mud room, and a large great room leading out to the outdoor living area. The 2 bed/2 bath ADU will be connected by a gorgeous pool and courtyard with lush gardens. Conveniently located in the Mesa area of The Preserve between the main gate and the Hacienda/Ranch Club facilities, providing easy access to The Preserve's luxuries and all the incredible offerings of the Monterey Peninsula.



**COLDWELL  
BANKER**

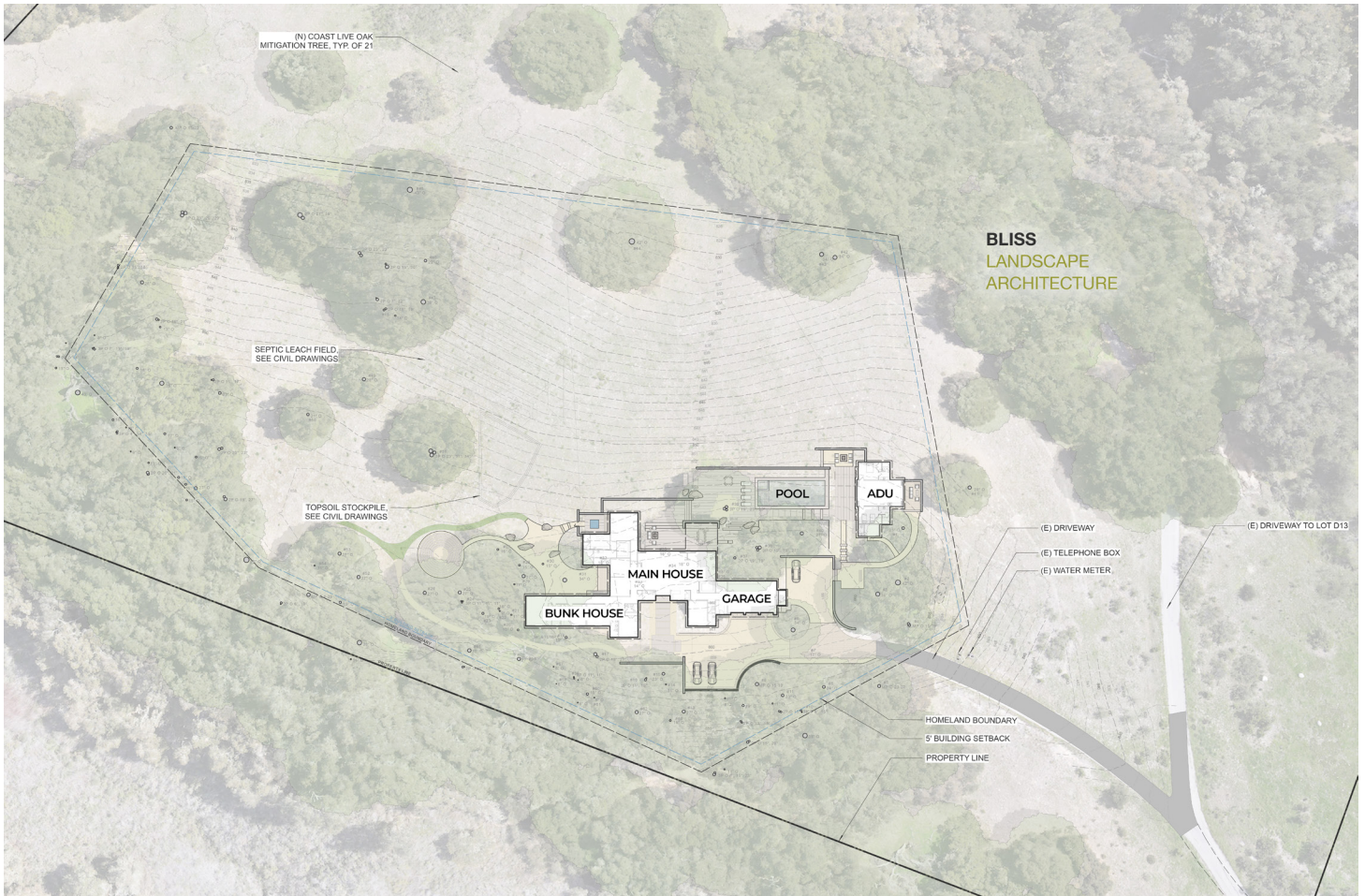
831.214.1990 | DRE#00891159  
TimAllenProperties.com  
Team@TimAllenProperties.com



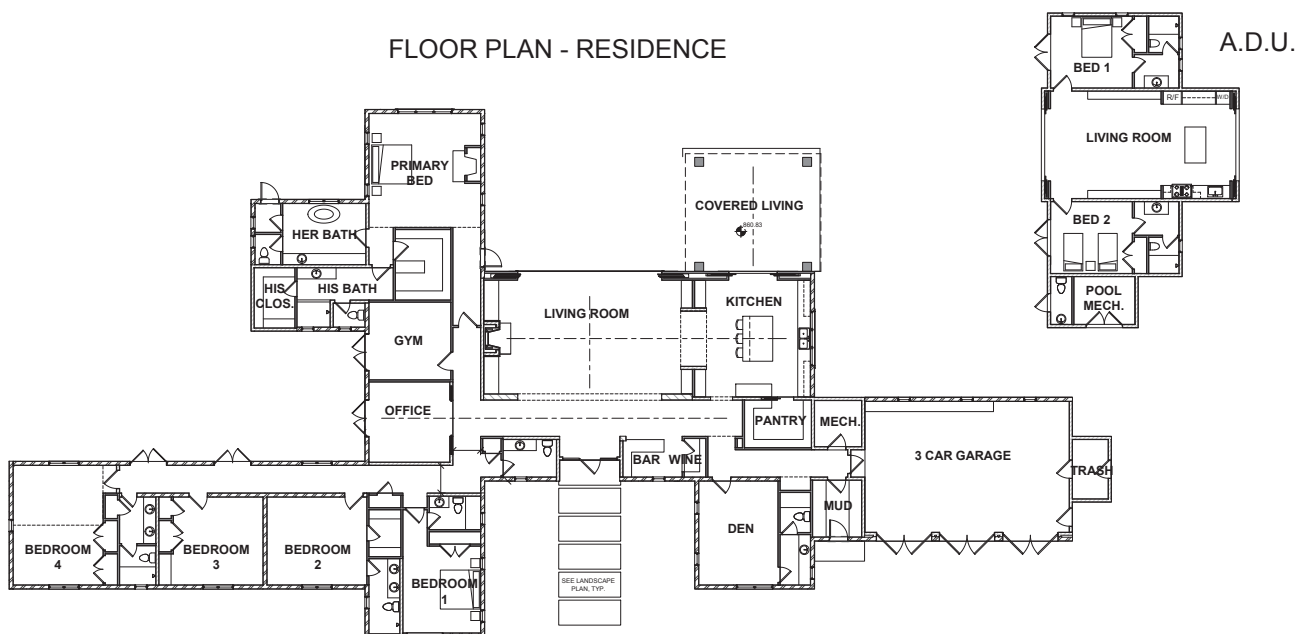
**TIM ALLEN**  
PROPERTIES TEAM



# LANDSCAPE REFERENCE SITE PLAN



FLOOR PLAN - RESIDENCE



TOM MEANEY ARCHITECT

629 STATE STREET • SUITE 240 • SANTA BARBARA • CA • 93101  
TEL 805.895.2836 • WWW.TOMMEANEY.COM • TOM@TOMMEANEY.COM

