



## 553 BEACH DRIVE

APTOS, CALIFORNIA

### APTOS BEACHFRONT LIVING

\$6,195,000

[AptosBeachfront.com](http://AptosBeachfront.com)



#### SCAN ME

Hold up your phone's camera to visit the property's website.

Located behind the private gates of Rio Surf & Sand, this stunning 4-bed, 3-bath coastal retreat offers 2,244 sq ft of luxurious living on an expansive 10,193 sq ft lot. Masterfully designed by renowned architect Thatcher Thompson and impeccably constructed by DeMattei Construction in 2007, the home is thoughtfully designed around a central courtyard, creating a seamless indoor-outdoor flow ideal for entertaining or quiet relaxation. The light-filled great room features soaring ceilings, a gas-log fireplace with gas starter, and panoramic views of Monterey Bay. The open-concept kitchen boasts high-end finishes, a spacious island, and direct access to ocean-view decks. Beyond the discreet entry lies a central courtyard that gracefully connects the home's wings through sliding doors, opening to reveal a stunning coastal panorama. The primary suite offers a serene escape, and three additional bedrooms provide flexibility for guests or a home office. Step outside to your private beachfront oasis with direct sand access and breathtaking views from Santa Cruz to Monterey. This is truly coastal living at its finest.



**COLDWELL  
BANKER**

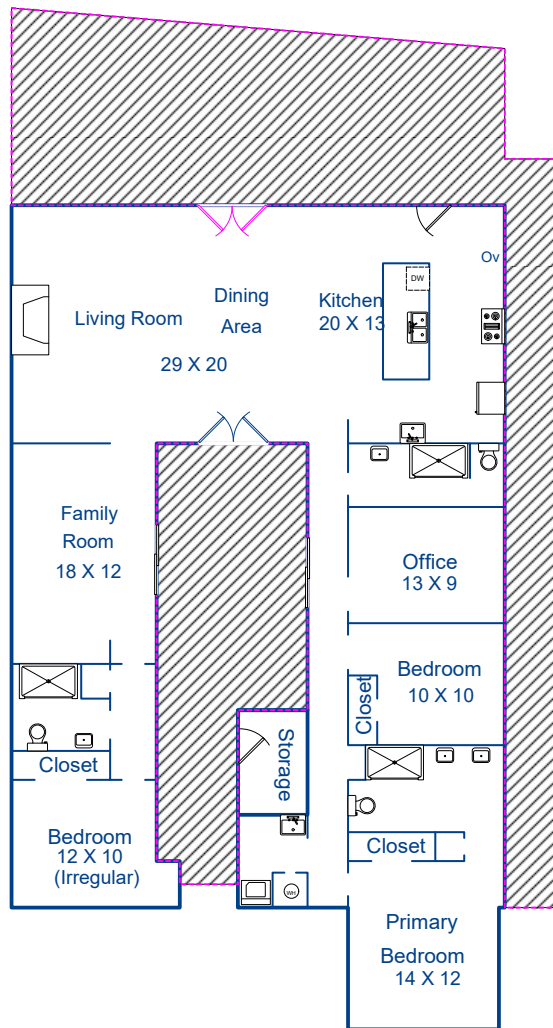
831.214.1990 | DRE#00891159  
[TimAllenProperties.com](http://TimAllenProperties.com)  
[Team@TimAllenProperties.com](mailto:Team@TimAllenProperties.com)



**TIM ALLEN**  
 PROPERTIES TEAM

The property information herein is derived from various sources that may include, but not be limited to, county records and the Multiple Listing Service, and it may include approximations. Although the information is believed to be accurate, it is not warranted and you should not rely upon it without personal verification. ©2024 Coldwell Banker. All Rights Reserved. Coldwell Banker and the Coldwell Banker logos are trademarks of Coldwell Banker Real Estate LLC. The Coldwell Banker® System is comprised of company owned offices which are owned by a subsidiary of Anywhere Advisors LLC and franchised offices which are independently owned and operated. The Coldwell Banker System fully supports the principles of the Fair Housing Act and the Equal Opportunity Act.

# FLOOR PLAN



This model is for use as a visual tool only. Some measurements are estimates. Therefore, no appraisal value should be inferred.

## SPECIFICS



4 Bedrooms



3 Bathrooms



2,244 SqFt



10,193 SqFt

Interior: ..... Plaster

Exterior: ..... Wood

Fireplace: ..... 1

Heat: ..... Central Forced Air

Roof: ..... Composition

Floors: ..... Carpet, Stone, Tile

Year Built: ..... 2007

**2.5% Buyers Brokerage Compensation** | Brokerage Compensation not binding unless confirmed by separate agreement among applicable parties.