



CARPENTER & 2ND NW CORNER

CARMEL, CALIFORNIA

CARMEL-BY-THE-SEA CHARMER

\$1,695,000

CarmelAbode.com



SCAN ME

Hold up your phone's camera to visit the property's website.

Located in the enchanting village of Carmel-by-the-Sea, this lovely 3-bedroom, 2.5-bathroom property includes a main residence and a recently built guest unit, offering coastal charm just a short stroll from downtown. The 1136sf main house is thoughtfully designed to maximize comfort and style. The spacious living area, adorned with beautiful hardwood floors and a cozy fireplace, provides a warm and inviting ambiance. Other highlights include a meticulously landscaped, private grape stake fence/gated yard, a charming patio with bar seating by the kitchen window perfect for alfresco dining, an attached spacious one-car garage, and off street driveway parking. The 408sf guest unit with private gated entrance offers a rental opportunity, or extra room for guests. Just minutes from Carmel's renowned shops, restaurants, art galleries, and pristine beaches, this property offers its lucky new owners the quintessential coastal lifestyle.



**COLDWELL
BANKER**

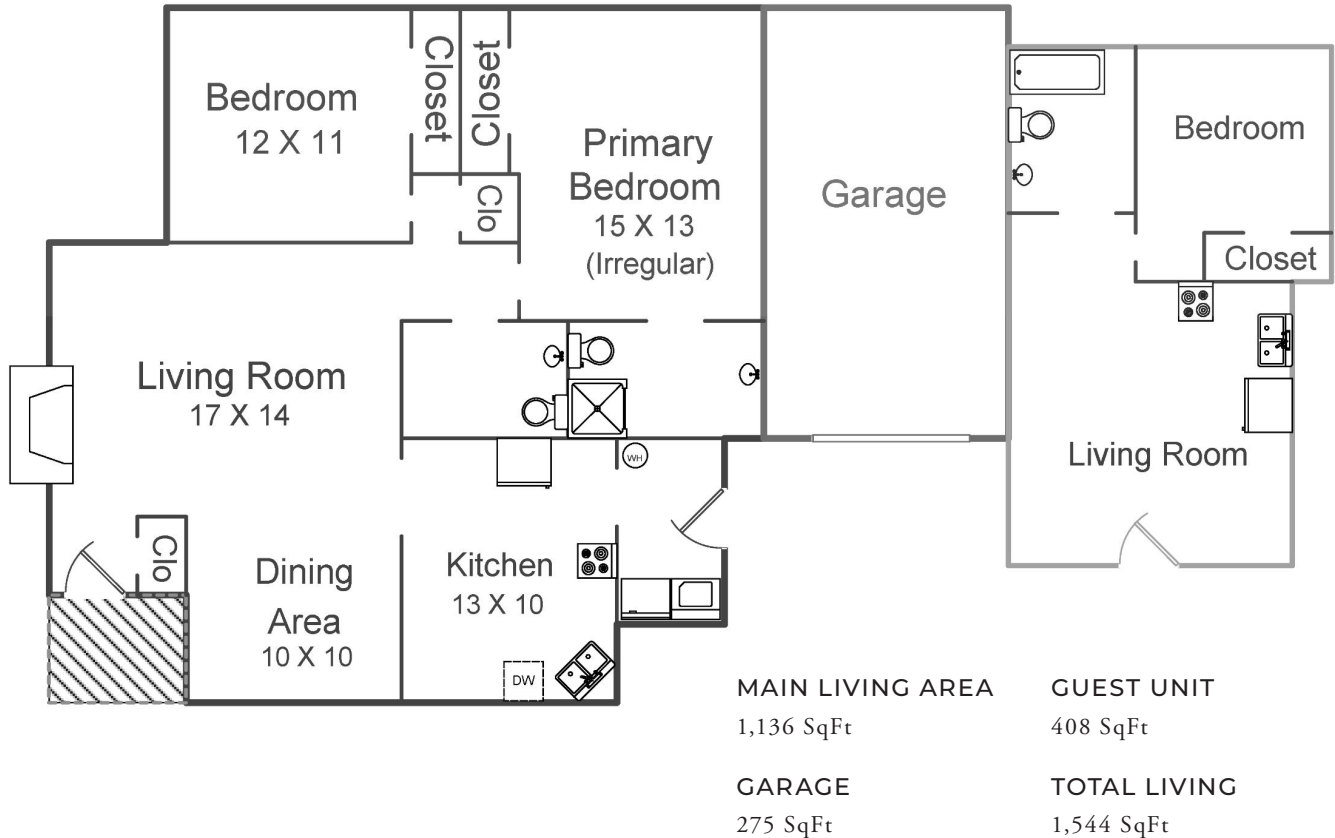
831.214.1990 | DRE#00891159
TimAllenProperties.com
Team@TimAllenProperties.com



TIM ALLEN
PROPERTIES TEAM

The property information herein is derived from various sources that may include, but not be limited to, county records and the Multiple Listing Service, and it may include approximations. Although the information is believed to be accurate, it is not warranted and you should not rely upon it without personal verification. ©2024 Coldwell Banker. All Rights Reserved. Coldwell Banker and the Coldwell Banker logos are trademarks of Coldwell Banker Real Estate LLC. The Coldwell Banker® System is comprised of company owned offices which are owned by a subsidiary of Anywhere Advisors LLC and franchised offices which are independently owned and operated. The Coldwell Banker System fully supports the principles of the Fair Housing Act and the Equal Opportunity Act.

FLOOR PLAN



This model is for use as a visual tool only. Some measurements are estimates. Therefore, no appraisal value should be inferred.

SPECIFICS



3 Bedrooms



2 Full, 1 Half Bathrooms



1,544 SqFt



3,920 SqFt Lot

Interior: Plaster

Exterior: Stucco

Fireplace: 1

Heat: Forced Air

Roof: Tile

Floors: Hardwood, Tile

Garage: 1-Car

Year Built: 1972

2.5% Buyers Brokerage Compensation | Brokerage Compensation not binding unless confirmed by separate agreement among applicable parties.