



2416 BAY VIEW AVENUE

CARMEL, CALIFORNIA

POINT OF VIEW

\$5,500,000

CarmelPointOfView.com



SCAN ME

Hold up your phone's camera to visit the property's website.

An architectural gem on Carmel Point, this exquisite coastal home is located just one block from Carmel Beach and a short stroll to downtown. Blending timeless elegance with contemporary luxury, the 3-bedroom, 4.5-bath residence offers ocean views, soaring ceilings, and custom craftsmanship throughout. This property is unique in that it is irreplaceable due to height and square footage that can not be done under current rules. The sunlit great room opens to multiple patios for seamless indoor-outdoor living, while the beautiful kitchen features top-tier appliances, and the ~400 SqFt basement adds extra storage space. The serene primary suite boasts a balcony with filtered ocean vistas. Set on a private lot with beautifully landscaped gardens, this fully fenced property also includes a one-car garage — perfect as a full-time residence or luxurious retreat. With its premium location and upside potential, this is coastal Carmel living at its finest.



**COLDWELL
BANKER**

831.214.1990 | DRE#00891159
TimAllenProperties.com
Team@TimAllenProperties.com



TIM ALLEN
 PROPERTIES TEAM

The property information herein is derived from various sources that may include, but not be limited to, county records and the Multiple Listing Service, and it may include approximations. Although the information is believed to be accurate, it is not warranted and you should not rely upon it without personal verification. ©2024 Coldwell Banker. All Rights Reserved. Coldwell Banker and the Coldwell Banker logos are trademarks of Coldwell Banker Real Estate LLC. The Coldwell Banker® System is comprised of company owned offices which are owned by a subsidiary of Anywhere Advisors LLC and franchised offices which are independently owned and operated. The Coldwell Banker System fully supports the principles of the Fair Housing Act and the Equal Opportunity Act.

FLOOR PLAN

NET LIVABLE AREA

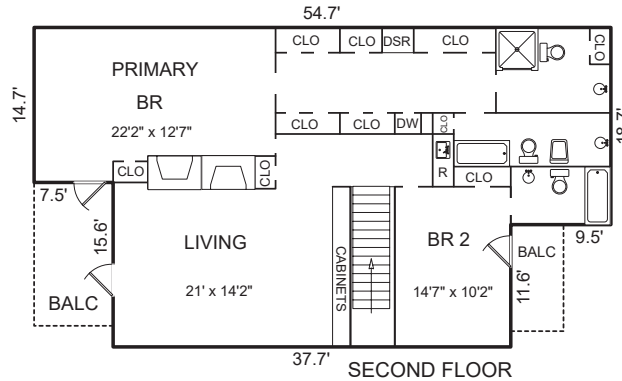
2,566 SqFt

SECOND FLOOR

1,366 SqFt

FIRST FLOOR

1,200 SqFt



PATIO

706 SqFt

PATIO

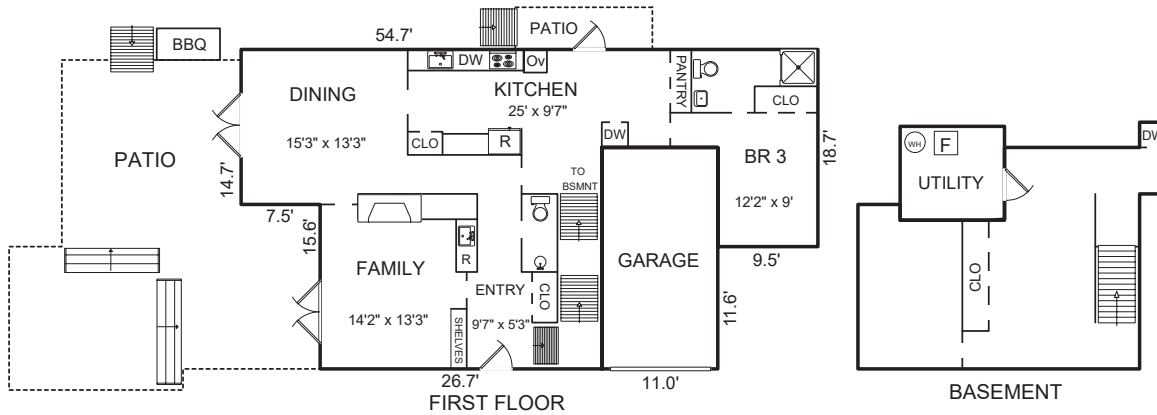
52 SqFt

BALCONY

102 SqFt

BALCONY

52 SqFt



GARAGE

231 SqFt

BASEMENT

488 SqFt

UTILITY

88 SqFt

This model is for use as a visual tool only. Some measurements are estimates. Therefore, no appraisal value should be inferred.

SPECIFICS



3 Bedrooms



4 Full, 1 Half Bathrooms



2,566 SqFt



4,000 SqFt Lot

Interior: Plaster

Exterior: Wood

Fireplace: 3, Wood Burning

Heat: Baseboard

Roof: Composition Shingle

Floors: Wood, Carpet, Tile

Garage: 1-Car

Year Built: 1975

2.5% Buyers Brokerage Compensation | Brokerage Compensation not binding unless confirmed by separate agreement among applicable parties.