

10450 SADDLE ROAD

MONTEREY, CALIFORNIA

CONTEMPORARY ELEGANCE WITH BAY VIEWS

\$2,695,000

PeninsulaViews.com



SCAN ME

Hold up your phone's
camera to visit the
property's website.

Perched atop the serene and lush setting of Saddle Road, this contemporary modern masterpiece embodies a refined architectural vision defined by elegant proportions, clean lines, and meticulous attention to detail. Soaring ceilings and strategically placed light tunnels flood the home in natural light, creating a luminous and uplifting ambiance. The open-concept floor plan flows with grace, intentionally designed to guide your gaze toward the sweeping panoramic views of rolling oak-studded hills and the Monterey Bay beyond. Sleek, floor-to-ceiling cabinetry blends form and function, offering minimalist beauty and exceptional utility in every space. This home is a harmonious blend of contemporary design, artistry, and natural serenity just minutes away from all the wonderful amenities of the Monterey Peninsula.



**COLDWELL
BANKER**

831.214.1990 | DRE#00891159
TimAllenProperties.com
Team@TimAllenProperties.com



TIM ALLEN
PROPERTIES TEAM

FLOOR PLAN

MAIN LIVING AREA

2,641 SqFt

GROUND FLOOR

721 SqFt

TOTAL

3,362 SqFt

DECK

335 SqFt

DECK

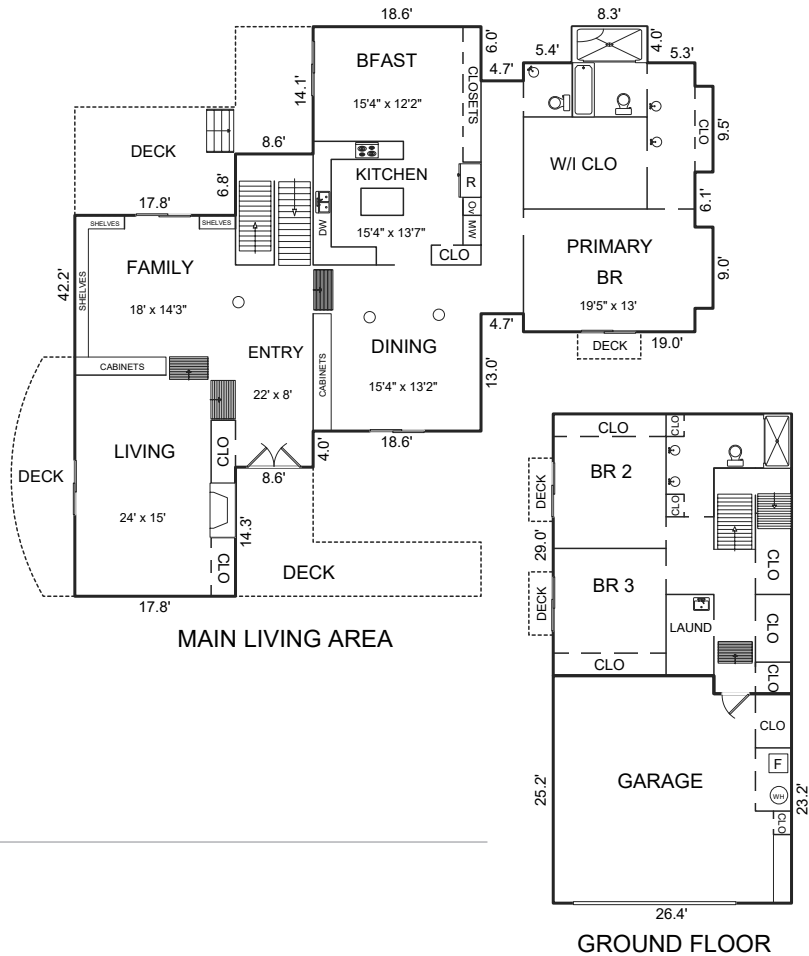
235 SqFt

DECK

164 SqFt

GARAGE

648 SqFt



This model is for use as a visual tool only. Some measurements are estimates. Therefore, no appraisal value should be inferred.

SPECIFICS



3 Bedrooms



2.5 Bathrooms



3,362 SqFt



2.5 Acres

Interior: Plaster

Exterior: Stucco

Fireplace: 1

Heat: Central Forced Air

Roof: Metal

Floors: Hardwood

Garage: 2-Car

Year Built: 1998

3% Buyers Brokerage Compensation | Brokerage Compensation not binding unless confirmed by separate agreement among applicable parties.