



## 132 FOREST AVENUE

PACIFIC GROVE, CALIFORNIA

### DAFFODIL HOUSE

\$3,199,000

[TimelessPG.com](https://TimelessPG.com)



#### SCAN ME

Hold up your phone's camera to visit the property's website.

Experience timeless Victorian elegance at the “Daffodil House,” a meticulously maintained 3-story residence in the heart of Pacific Grove’s Retreat district. Built in 1989, this 2,316 sq ft home offers 3 bedrooms and 2.5 bathrooms, seamlessly blending classic charm with modern amenities. This Heritage Society design award-winning home is currently used as a short-term rental with an attractive rental history. The updated gourmet kitchen features granite countertops, new stainless steel appliances, and a central island, perfect for culinary enthusiasts. The spacious primary suite boasts an updated bath and walk-in closet, providing a private retreat. Enjoy the warmth of a gas-burning fireplace in the living room and a wood-burning stove in the family room. Additional highlights include hardwood flooring, a formal dining room, and a breakfast nook. Situated on a 2,385 sq ft lot, the property features a fenced backyard, balcony/patio, and a large 2-car garage. Located less than one block from Lover’s Point, the ocean, and the coastal recreation trail, this home offers ocean views and easy access to Pacific Grove’s vibrant downtown area.



**COLDWELL  
BANKER**

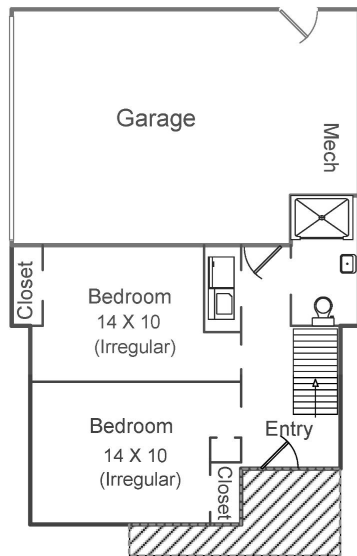
831.214.1990 | DRE#00891159  
[TimAllenProperties.com](https://TimAllenProperties.com)  
[Team@TimAllenProperties.com](mailto:Team@TimAllenProperties.com)



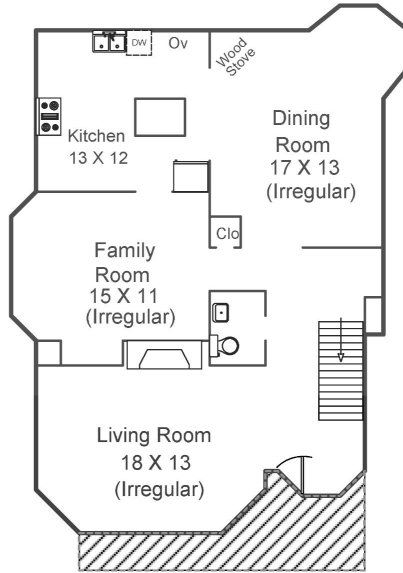
**TIM ALLEN**  
 PROPERTIES TEAM

The property information herein is derived from various sources that may include, but not be limited to, county records and the Multiple Listing Service, and it may include approximations. Although the information is believed to be accurate, it is not warranted and you should not rely upon it without personal verification. ©2024 Coldwell Banker. All Rights Reserved. Coldwell Banker and the Coldwell Banker logos are trademarks of Coldwell Banker Real Estate LLC. The Coldwell Banker® System is comprised of company owned offices which are owned by a subsidiary of Anywhere Advisors LLC and franchised offices which are independently owned and operated. The Coldwell Banker System fully supports the principles of the Fair Housing Act and the Equal Opportunity Act.

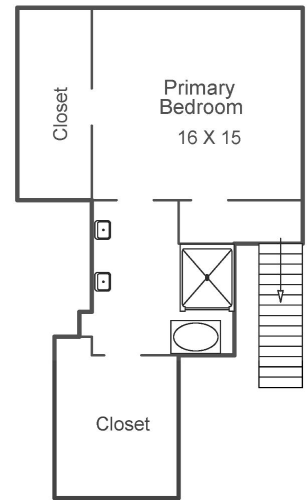
# FLOOR PLAN



ENTRY LEVEL  
568 SqFt



MAIN LEVEL  
1,107 SqFt



UPPER LEVEL  
641 SqFt

TOTAL	GARAGE
2,316 SqFt	510 SqFt

This model is for use as a visual tool only. Some measurements are estimates. Therefore, no appraisal value should be inferred.

## SPECIFICS



3 Bedrooms



2 Full, 1 Half Bathrooms



2,316 SqFt



2,385 SqFt Lot

Interior: ..... Wood, Wallpaper

Exterior: ..... Wood

Fireplace: ..... 2

Heat: ..... Central Forced Air - Gas

Roof: ..... Composition Shingle

Floors: ..... Carpet, Hardwood, Vinyl/Linoleum

Garage: ..... 2-Car

Year Built: ..... 1989

**3% Buyers Brokerage Compensation** | Brokerage Compensation not binding unless confirmed by separate agreement among applicable parties.