



# 3004 LIGHTHOUSE LANE

MARINA, CALIFORNIA

REFINED LIVING AT  
THE DUNES

\$1,995,000

[MarinaCoastalLiving.com](http://MarinaCoastalLiving.com)



SCAN ME

Hold up your phone's camera to visit the property's website.

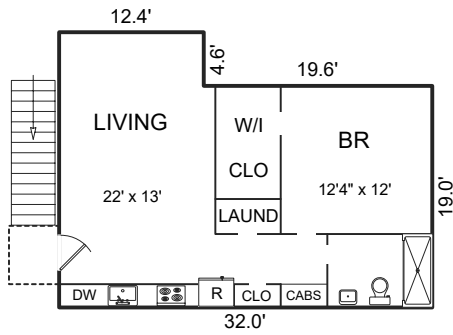
Welcome to 3004 Lighthouse Lane in the Dunes Masterplan Community. The first of only 29 exclusive Boathouse models built to come to market, this is a rare opportunity to own one of the community's most sought-after models. Set on a large lot with a sunny and private yard, this immaculate home offers 4 spacious bedrooms, an office, and 3.5 baths. A separate 1-bedroom apartment above the detached 3-car garage is ideal for guests, multigenerational living, a private studio, or potential rental income. Designed with both elegance and livability in mind, the floorplan includes a full en-suite bedroom and office on the main floor, a chef's kitchen with oversized island, and a large living and dining area with high ceilings and a gas fireplace. Numerous upgrades include a home theater system loft with wired surround sound, wooden plantation shutters, custom closets and pantry, and a built-in dry bar credenza with beverage cooler. Situated on a quiet street yet walkable to the vibrant Dunes Shopping Center, offering a diverse selection of restaurants, retail, and grocery—and just one mile from the majestic California coastline—this home offers the perfect balance of serenity and convenience.



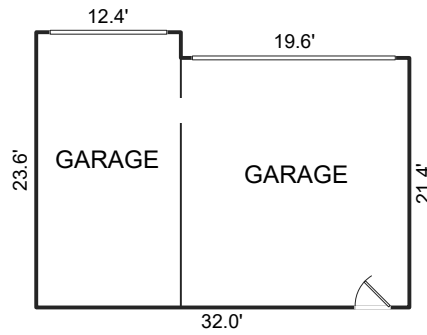
831.214.1990 | DRE#00891159  
[TimAllenProperties.com](http://TimAllenProperties.com)  
[Team@TimAllenProperties.com](mailto:Team@TimAllenProperties.com)



# FLOOR PLAN



APARTMENT



FIRST FLOOR

1,539 SqFt

SECOND FLOOR

1,569 SqFt

APARTMENT

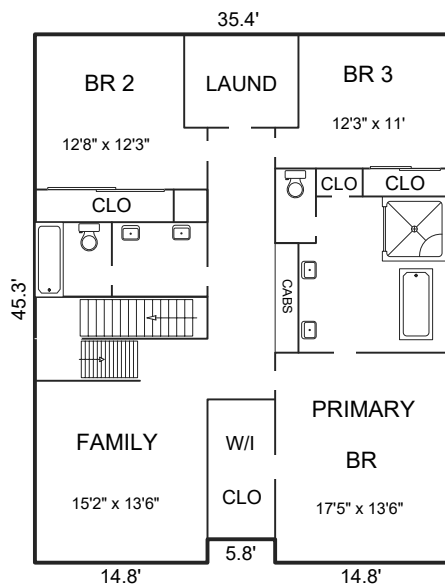
665 SqFt

TOTAL LIVING AREA

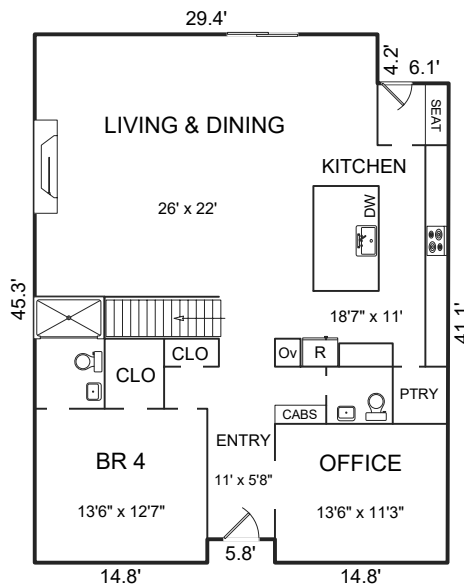
3,773 SqFt

GARAGES

712 SqFt



SECOND FLOOR



FIRST FLOOR

This model is for use as a visual tool only. Some measurements are estimates. Therefore, no appraisal value should be inferred.

## SPECIFICS



5 Bedrooms



4 Full, 1 Half Bathrooms



3,773 SqFt



5,664 SqFt Lot

Interior: ..... Drywall

Roof: ..... Composition Shingle

Exterior: ..... Wood

Floors: ..... Hardwood, Carpet, Tile

Fireplace: ..... 1, Gas

Garage ..... 3-Car

Heat: ..... Forced Air

Year Built: ..... 2018

**2.5% Buyers Brokerage Compensation** | Brokerage Compensation not binding unless confirmed by separate agreement among applicable parties.