



83 HIGH MEADOW LANE

CARMEL, CALIFORNIA

**CARMEL
TOWNHOME RETREAT**

\$1,195,000

CarmelHighMeadow.com



SCAN ME

Hold up your phone's camera to visit the property's website.

Located in the peaceful High Meadow Lane community just minutes from downtown Carmel-by-the-Sea, 83 High Meadow Lane offers 3 bedrooms, 3 bathrooms, and approximately 1,983 sq ft of light-filled living space. The living room features a cozy gas log fireplace and floor-to-ceiling windows, with sliding glass doors opening to a balcony. The kitchen includes a breakfast nook with a pass-through window and flows seamlessly into the dining area. The main-level primary suite features generous closet space and a private patio, with a second en suite bedroom also on the main floor. Downstairs, a third bedroom suite with its own patio, plus a laundry room and two-car garage, complete the home. Just steps away is the community's heated pool, providing relaxation and recreation. Conveniently located between Carmel-by-the-Sea, Monterey, and Pebble Beach, this charming residence enjoys quick access to the ocean, scenic hiking trails, and endless activities.



**COLDWELL
BANKER**

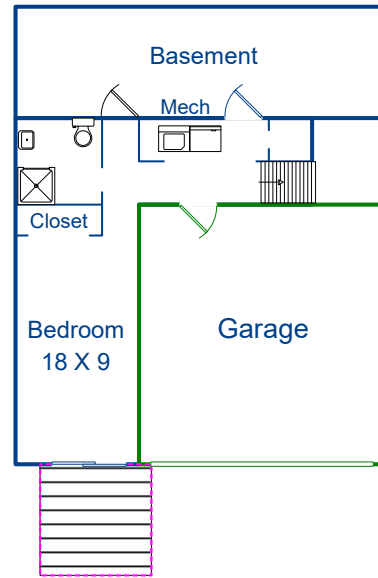
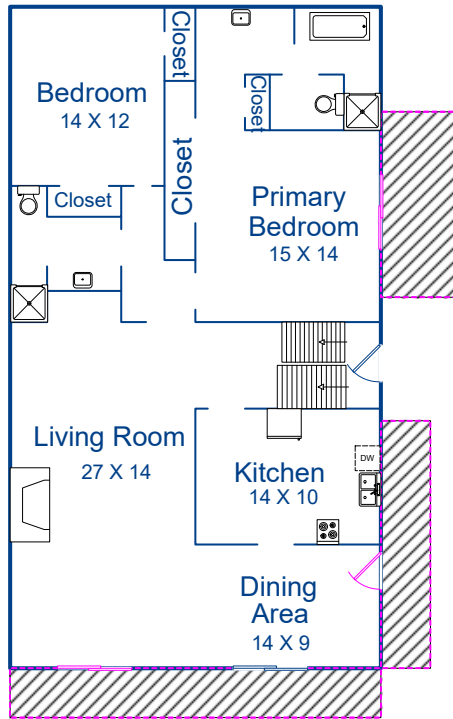
831.214.1990 | DRE#00891159
TimAllenProperties.com
Team@TimAllenProperties.com



TIM ALLEN
PROPERTIES TEAM

The property information herein is derived from various sources that may include, but not be limited to, county records and the Multiple Listing Service, and it may include approximations. Although the information is believed to be accurate, it is not warranted and you should not rely upon it without personal verification. ©2024 Coldwell Banker. All Rights Reserved. Coldwell Banker and the Coldwell Banker logos are trademarks of Coldwell Banker Real Estate LLC. The Coldwell Banker® System is comprised of company owned offices which are owned by a subsidiary of Anywhere Advisors LLC and franchised offices which are independently owned and operated. The Coldwell Banker System fully supports the principles of the Fair Housing Act and the Equal Opportunity Act.

FLOOR PLAN



MAIN LIVING AREA 1,605 SqFt	BASEMENT 270 SqFt
LOWER LEVEL 378 SqFt	GARAGE 420 SqFt
TOTAL 1,983 SqFt	

This model is for use as a visual tool only. Some measurements are estimates. Therefore, no appraisal value should be inferred.

SPECIFICS



3 Bedrooms



3 Bathrooms



1,983 SqFt



2,263 SqFt Lot

Interior:..... Drywall
 Exterior:..... Stucco, Wood
 Fireplace:..... 1, Gas Log
 Heat:..... Forced Air

Roof:..... Tile
 Floors:..... Laminate Plank
 Garage:..... 2-Car
 Year Built:..... 1970

2.5% Buyers Brokerage Compensation | Brokerage Compensation not binding unless confirmed by separate agreement among applicable parties.