



# CARMELO & 13TH, NE CORNER

CARMEL, CALIFORNIA

**Carmel Coastal Estate**

\$16,500,000

[CarmelCoastLiving.com](http://CarmelCoastLiving.com)



Perched just two blocks from the beach, this extraordinary Craftsman-style estate captures timeless Carmel charm. Thoughtfully expanded and impeccably maintained through the years, the residence is set on nearly a triple lot surrounded by lush, sun-drenched gardens and multiple outdoor retreats designed for both relaxation and entertaining. Inside, over 4,200 square feet of refined living space blends warmth and sophistication with rich oak floors and dramatic beamed ceilings. This versatile home offers exceptional flexibility, easily accommodating a variety of lifestyles with the option for additional bedrooms, expansive gathering spaces, private guest quarters, or dedicated work-from-home areas. Thoughtfully designed living spaces allow the home to adapt seamlessly for both intimate everyday living and larger-scale entertaining. Additional highlights include a large finished basement, an impressive 1,500-bottle wine cellar, and an attached two-car garage, all situated on more than a quarter acre in one of Carmel's most coveted beachside locations. A rare opportunity to enjoy the feel of a private coastal estate just moments from the sand and sea.

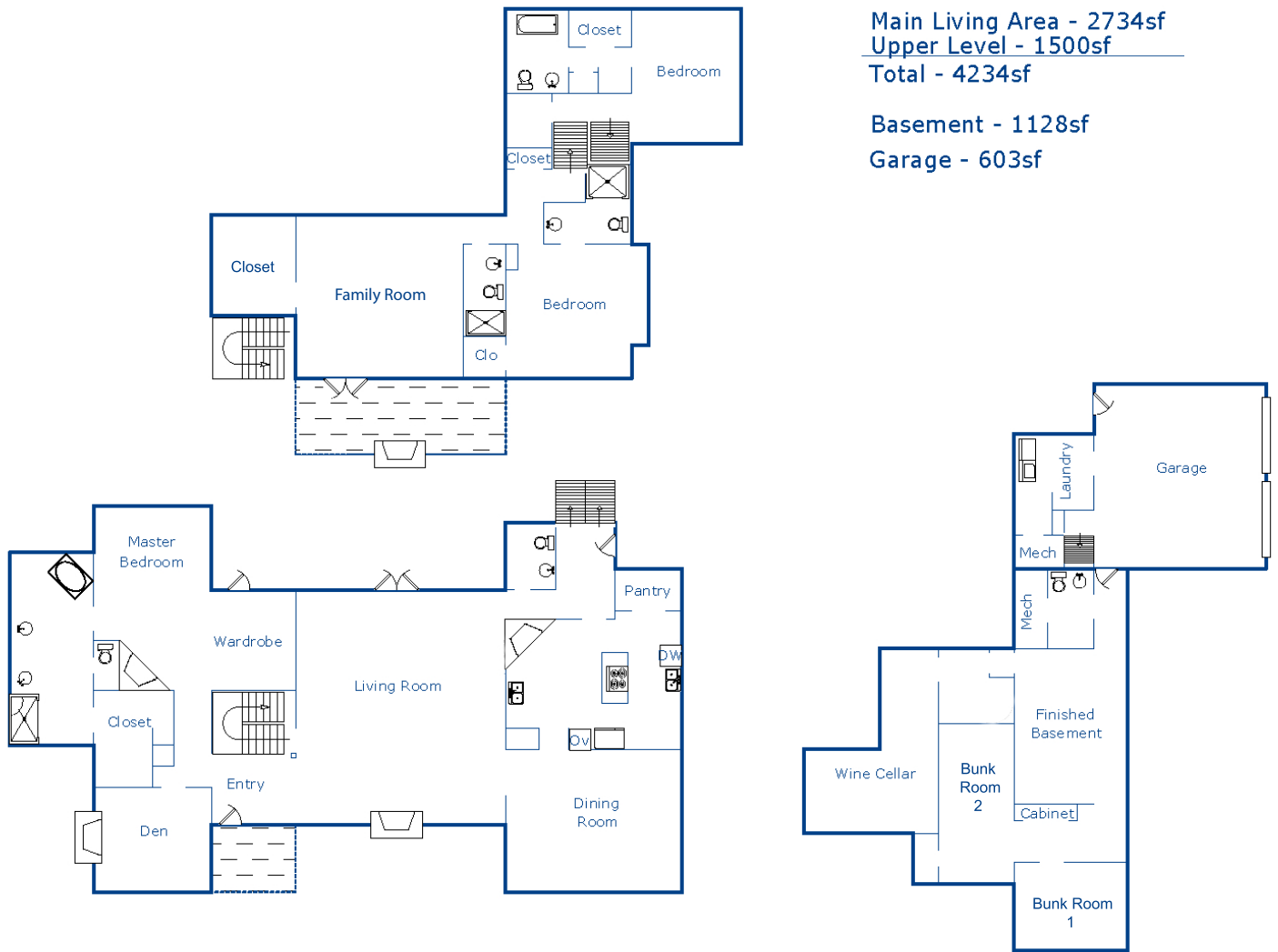


831.214.1990 | DRE#00891159  
[TimAllenProperties.com](http://TimAllenProperties.com)  
[Team@TimAllenProperties.com](mailto:Team@TimAllenProperties.com)

**TA | TIM ALLEN**  
PROPERTIES TEAM

The property information herein is derived from various sources that may include, but not be limited to, county records and the Multiple Listing Service, and it may include approximations. Although the information is believed to be accurate, it is not warranted and you should not rely upon it without personal verification. ©2026 Coldwell Banker. All Rights Reserved. Coldwell Banker and the Coldwell Banker logos are trademarks of Coldwell Banker Real Estate LLC. The Coldwell Banker® System is comprised of company owned offices which are owned by a subsidiary of Anywhere Advisors LLC and franchised offices which are independently owned and operated. The Coldwell Banker System fully supports the principles of the Fair Housing Act and the Equal Opportunity Act.

# FLOOR PLAN



Main Living Area - 2734sf  
 Upper Level - 1500sf  
 Total - 4234sf

Basement - 1128sf  
 Garage - 603sf

## SPECIFICS



4 Bedrooms



4 Full, 1 Half Bath



4,234 SqFt



11,000 SqFt Lot

Interior: ..... Drywall  
 Exterior: ..... Wood Shingles  
 Heating: ...Central Forced Air Gas, Radiant  
 Air Conditioning: ..... Yes  
 Fireplace: ..... 6 (4 Indoor, 2 Outdoor)

Roof: ..... Wood Shingles  
 Floors: ..... Wood, Tile, Stone  
 Garage: ..... 2- Car  
 Year Built: ..... 2007

**2% Buyers Brokerage Compensation** | Brokerage Compensation not binding unless confirmed by separate agreement among applicable parties.