



# 130 DEL MESA

CARMEL, CALIFORNIA

## DEL MESA HAVEN

\$1,249,000

[CarmelDelMesa.com](http://CarmelDelMesa.com)



Tucked within the sought-after Del Mesa Carmel community, this south-facing 2-bedroom, 2-bath residence offers a warm blend of comfort and convenience in a serene setting. Thoughtfully updated, the home features new hardwood floors, fresh kitchen cabinetry, new appliances, and beautifully refinished exposed beams that add character to the living space. A gas-burning fireplace creates an inviting focal point, while radiant floor heating enhances everyday comfort. Natural light fills the home, with tinted windows in the dining area and primary suite providing added privacy. The mostly enclosed porch offers a versatile space to relax, read, or enjoy indoor-outdoor living year-round. Ideally positioned with parking just steps from the front door and a convenient carport, this home combines easy accessibility with low-maintenance living. Enjoy the peaceful surroundings and amenities of Del Mesa Carmel, all just moments from the charm of Carmel-by-the-Sea.

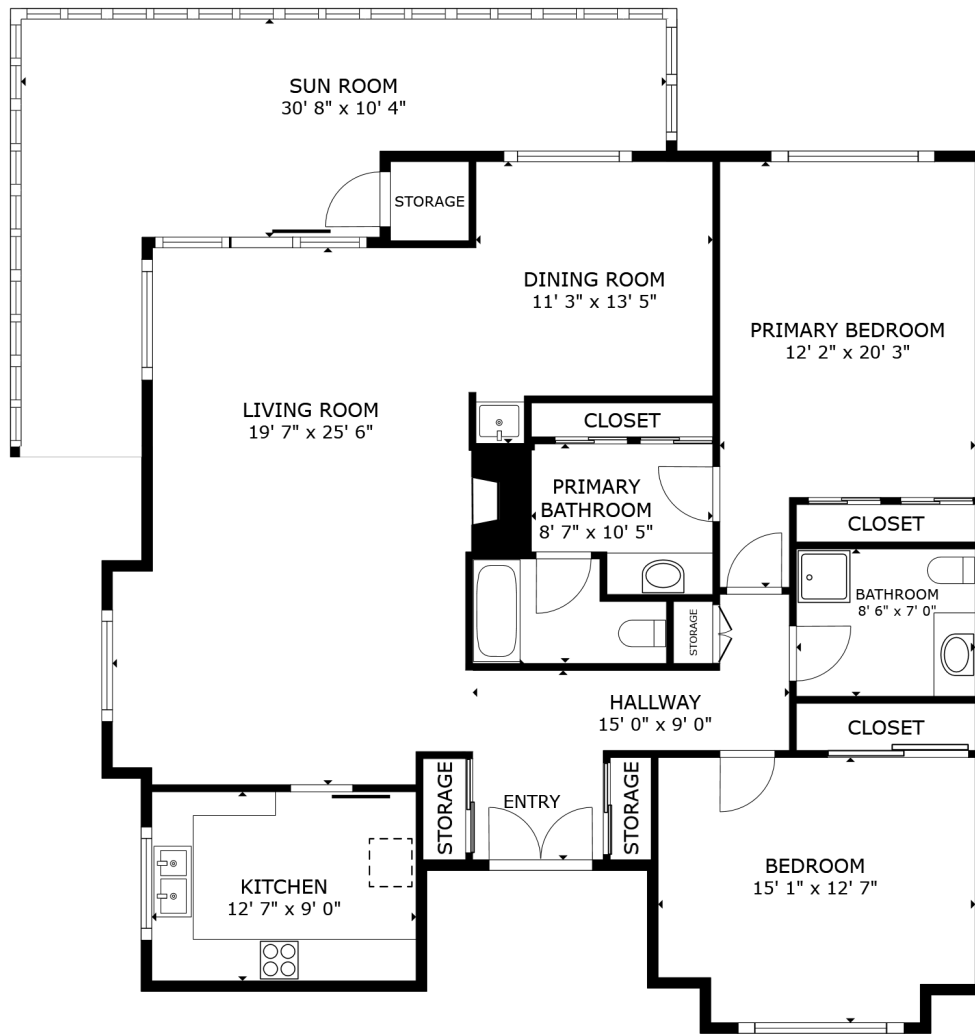


831.214.1990 | DRE#00891159  
[TimAllenProperties.com](http://TimAllenProperties.com)  
[Team@TimAllenProperties.com](mailto:Team@TimAllenProperties.com)



The property information herein is derived from various sources that may include, but not be limited to, county records and the Multiple Listing Service, and it may include approximations. Although the information is believed to be accurate, it is not warranted and you should not rely upon it without personal verification. ©2024 Coldwell Banker. All Rights Reserved. Coldwell Banker and the Coldwell Banker logos are trademarks of Coldwell Banker Real Estate LLC. The Coldwell Banker® System is comprised of company owned offices which are owned by a subsidiary of Anywhere Advisors LLC and franchised offices which are independently owned and operated. The Coldwell Banker System fully supports the principles of the Fair Housing Act and the Equal Opportunity Act.

# FLOOR PLAN



This model is for use as a visual tool only. Some measurements are estimates. Therefore, no appraisal value should be inferred.

## SPECIFICS



2 Bedrooms



2 Bathrooms



1,469 SqFt



1,340 SqFt

Interior: ..... Drywall  
 Exterior: ..... Wood  
 Fireplace: ..... 1 - Gas Burning  
 Heat: ..... Radiant Floor

Roof: ..... Composition  
 Floors: ..... Hardwood, Tile, Carpet  
 Carport: ..... 1-Car  
 Year Remodeled: ..... 1968

**2.5% Buyers Brokerage Compensation** | Brokerage Compensation not binding unless confirmed by separate agreement among applicable parties.