



126 STRUM ISLAND WAY

MAHONE BAY, NOVA SCOTIA B0J 2E0

A PRIVATE ISLAND HAVEN IN MAHONE BAY

\$6,800,000

PrivatelIslandLiving.com



SCAN ME

Hold up your phone's camera to visit the property's website.

Discover Strum Island, a rare 10-acre private island retreat in Nova Scotia's stunning Mahone Bay. Crafted for luxury, seclusion, and self-sufficiency, this extraordinary safe haven offers an unparalleled opportunity for your own fully developed private island. Whether you're seeking a secure/private getaway for family/friends, a business opportunity/corporate retreat, or a complete prep-ready escape from the uncertain chaos of the world, Strum Island delivers unmatched privacy, comfort, and natural beauty. At its heart is The Lodge, a 9,500+ sq ft main house blending rustic charm with exquisite craftsmanship. Featuring six suites, an extravagant great room with a hand-carved bar and fireplace, movie theater, gourmet kitchen with dual Lacanche gas ranges, and so much more. Additional structures and features include The Boathouse, The Beach Hut, Rose Cottage, a large staff quarters building offering flexible space for guests or extended stays, multiple gardens and growing facilities, and winding trails leading through thousands of native trees and edible/medicinal plants. Other rare features of the island are the mainland private wharf 2 minutes away and its connection to the electrical grid via underground cables, but the entire property is also fully off-grid capable with backup power, food and water systems, and a helicopter pad. It is offered fully furnished, with two excellent boats, a truck, and complete inventory for a seamless, turnkey opportunity. Just minutes from the historic towns of Lunenburg and Chester, this one-of-a-kind island escape is the perfect blend of tranquility and access. Your private coastal haven awaits.



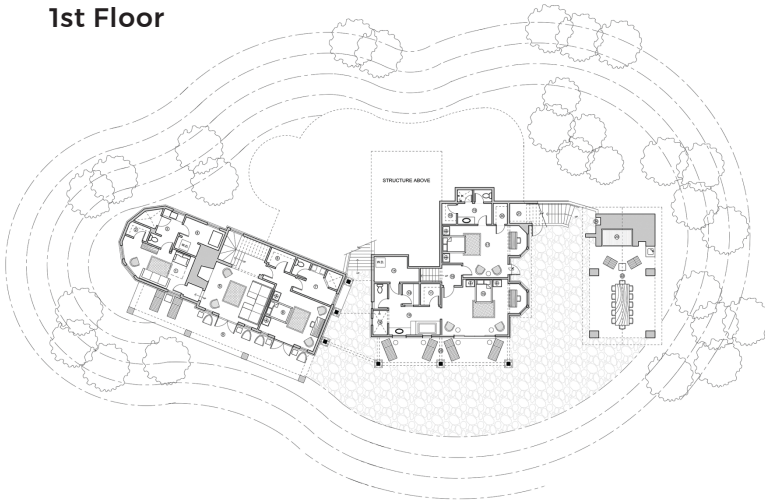
ERIC MEREDITH • Cell: 902.830.5139
EricMeredith.com • ericmeredith@royallepage.ca



831.214.1990 • DRE#00891159
TimAllenProperties.com | Team@TimAllenProperties.com

FLOOR PLAN

1st Floor



1st Floor

CLOVER SUITE

1. Bedroom
2. Closet
3. Bathroom

MAYFLOWER SUITE

5. Sitting Room
6. Closet
7. Bathroom
8. Bedroom
9. Covered Terrace

SCHOONER SUITE

10. Bathroom
11. Closet
12. Steam Shower
13. Sauna
15. Bedroom
25. Covered Terrace

ANCHOR SUITE

17. Bedroom
18. Closet
19. Bathroom
20. Closet

LOBSTER TEMPLE

22. Lobster Table
23. Lobster Fireplace
24. Propane Grill

2nd Floor

ORCHARD SUITE

26. Bedroom
27. Closets
28. Fireplace
29. Great Room
30. Bar
31. Balcony
32. Entry
33. Breezeway
34. Media Room

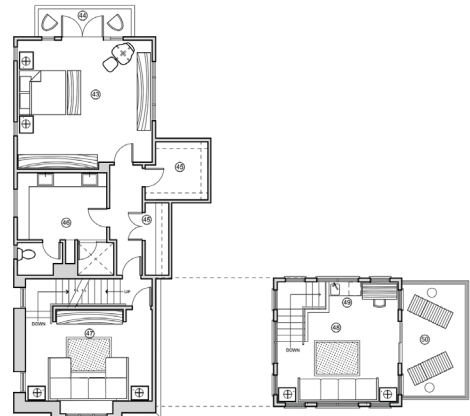
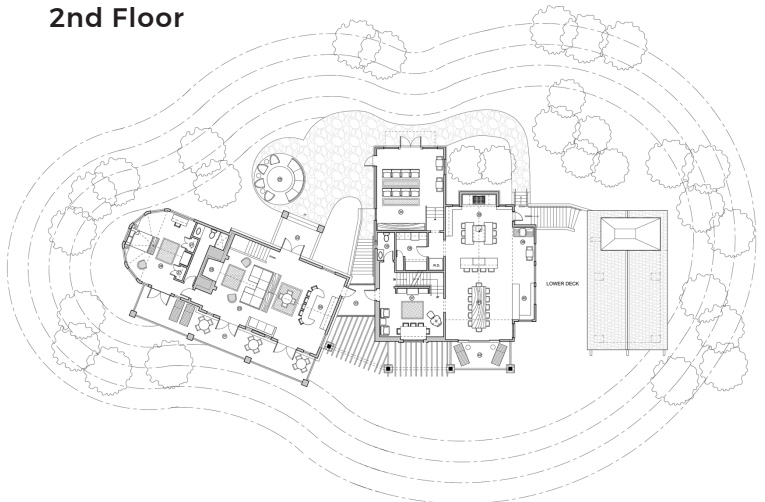
35. Bathroom
36. Butler's Pantry
37. Wine Room
38. Kitchen
39. Coffee Station
40. Buffet
41. Dining Area
42. Covered Balcony

3rd & 4th Floor

OSPREY SUITE

43. Bedroom
44. Balcony
45. Closet
46. Bathroom
47. Library
48. Tower
49. Coffee & Wet Bar
50. Balcony

2nd Floor



3rd Floor

4th Floor

This model is for use as a visual tool only. Some measurements are estimates. Therefore, no appraisal value should be inferred

SPECIFICS



10 Bedrooms



11.5 Bathrooms



12,000 SqFt



9.88 Acres

Interior: Plaster, Cherry, Oak, Pine

Exterior: Granite Stone

Fireplace: 3 Indoor, 1 Outdoor

Heat: Heat Pump, In Floor, Radiant

Air Conditioning: Ducted Cooling,

Ductless, Window Units

Security Features: Security System

Roof: Slate, Copper Flashing

Floors: Granite, Slate, Limestone

Garage: 2-Car

Year Built: 2011