



# 1246 PORTOLA ROAD

PEBBLE BEACH, CALIFORNIA

## OCEANVIEW FRENCH COUNTRY ESTATE

\$16,995,000

[PebbleBeachElegance.com](http://PebbleBeachElegance.com)



### SCAN ME

Hold up your phone's camera to visit the property's website.

Experience timeless French country elegance at this 6,402± sq.ft. estate in Pebble Beach, crafted by Randy Wallis and designed by Jun Sillano of IDG. Set on 1.35 acres with panoramic views from Point Lobos to Point Sur in Big Sur and the coastline in between, this 5-bed, 6.5-bath home offers refined living in a private coastal setting. The stone entry opens to a grand living room with wide-plank wood floors, oak built-ins, and Ironware chandeliers. The gourmet kitchen features honed marble counters, Thermador appliances, a wood-clad hood, and walk-in pantry, all adjacent to a cozy family room with fireplace. A main-level primary suite includes French doors to the deck, walk-in closets, and a spa-like bath with Palomino granite and walk-out patio. Other features include an elevator connecting the main levels, a guest suite with ocean views, and a lower level with game room, multiple ensuite bedrooms, laundry, and radiant heat throughout. The 920± sq.ft. 3-car garage has dual EV chargers. Exterior highlights include fire pit, ocean-facing deck, uplighting, bronze railings, and room for a pool or guest unit. Quietly nestled among oaks with privacy and potential for expansion, this is Pebble Beach luxury at its finest.



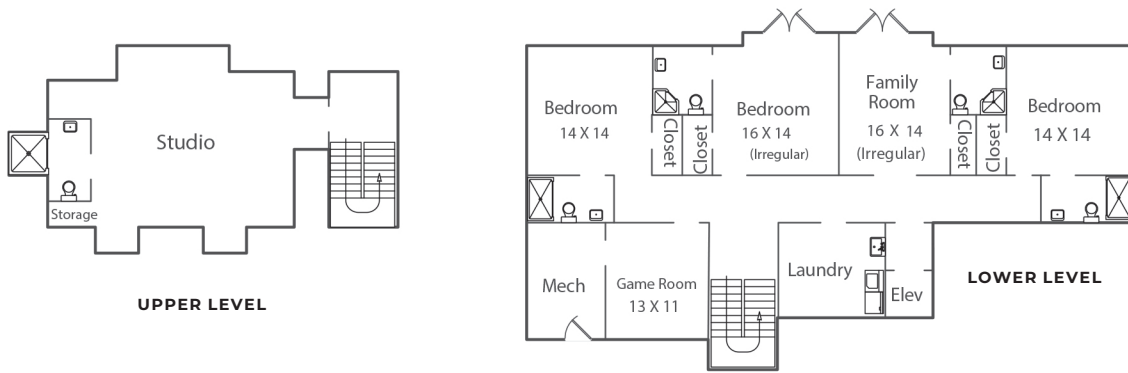
**COLDWELL BANKER**

831.214.1990 | DRE#00891159  
[TimAllenProperties.com](http://TimAllenProperties.com)  
[Team@TimAllenProperties.com](mailto:Team@TimAllenProperties.com)

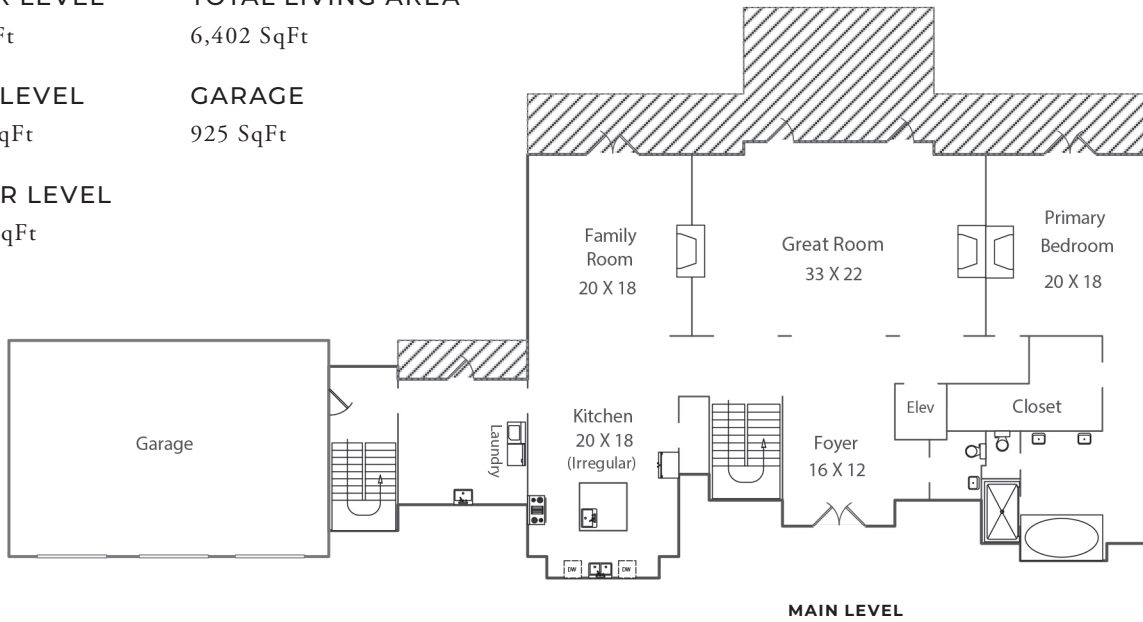


**TIM ALLEN**  
PROPERTIES TEAM

# FLOOR PLAN



<b>UPPER LEVEL</b>	<b>TOTAL LIVING AREA</b>
764 SqFt	6,402 SqFt
<b>MAIN LEVEL</b>	<b>GARAGE</b>
3,552 SqFt	925 SqFt
<b>LOWER LEVEL</b>	
2,086 SqFt	



This model is for use as a visual tool only. Some measurements are estimates. Therefore, no appraisal value should be inferred.

## SPECIFICS



5 Bedrooms



6 Full, 1 Half Bathrooms



6,402 SqFt



1.35 Acres

Interior: ..... Plaster

Roof: ..... Clay Tile

Exterior: ..... Stucco, Stone

Floors: ..... Hardwood

Fireplace: ..... 3

Garage: ..... 3-Car

Heat: ..... Radiant

Year Built: ..... 2025

**2.5% Buyers Brokerage Compensation** | Brokerage Compensation not binding unless confirmed by separate agreement among applicable parties.