

10 ENCINA DRIVE

CARMEL VALLEY, CALIFORNIA

CARMEL VALLEY MASTERPIECE

\$12,995,000

CarmelValleyMasterpiece.com



SCAN ME

Hold up your phone's camera to visit the property's website.

This newly built architectural masterpiece is a true designer's paradise, offering 5,429 sq ft of refined living nestled on 3.33 acres in Carmel Valley. Every detail has been thoughtfully curated, making it the perfect canvas for both sophisticated living and inspired entertaining. Designed with plaster interiors, stucco and stone exterior, and a slate tile roof, the home blends timeless craftsmanship with modern comfort. Inside, the space features a gourmet kitchen and formal dining room with wide-plank oak and tile floors that flow throughout, anchored by three indoor gas fireplaces. The primary suite is a serene retreat with a spa-inspired bath, while two additional en-suite bedrooms offer comfort and privacy. Designed for year-round enjoyment, outdoor amenities include a pool, spa, multiple terraces, a wood-burning fireplace, and a gas fire pit. A stunning guest house features a pool-facing covered patio with an outdoor kitchen, fireplace, and TV, as well as two private patios, each with a luxurious soaking tub and shower. This estate combines luxury, function, and design excellence in a private natural setting just minutes from Carmel Valley Village, Pebble Beach Golf, and Carmel-by-the-Sea's world-class dining, beaches, and shopping.



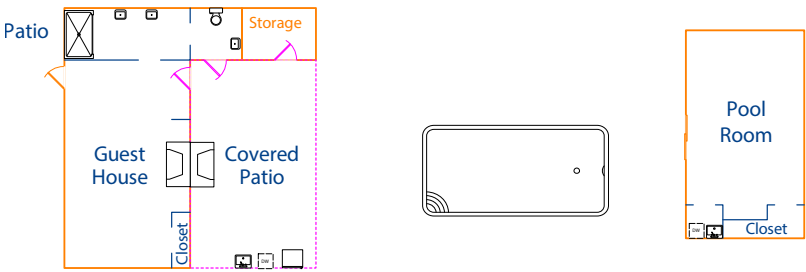
**COLDWELL
BANKER**

831.214.1990 | DRE#00891159
TimAllenProperties.com
Team@TimAllenProperties.com



TIM ALLEN
 PROPERTIES TEAM

FLOOR PLAN



MAIN LEVEL
2,608 SqFt

POOL ROOM
448 SqFt

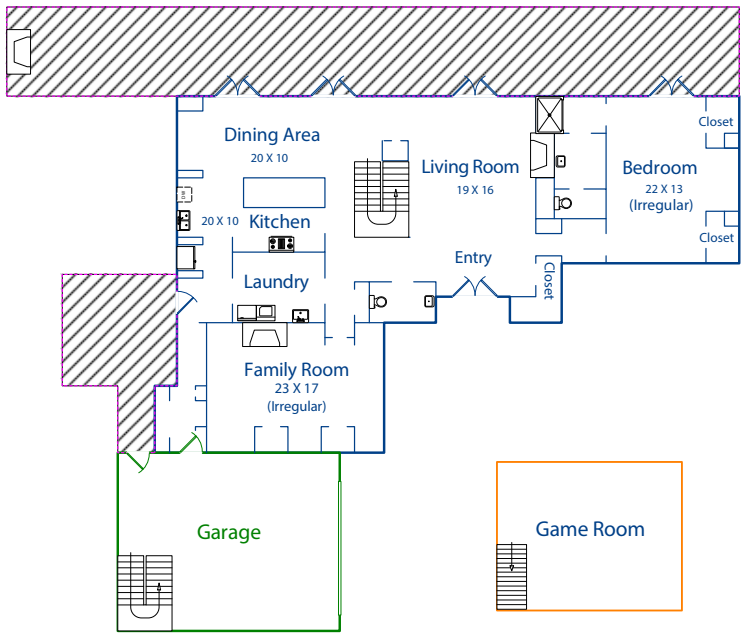
UPPER LEVEL
1,229 SqFt

GAME ROOM
500 SqFt

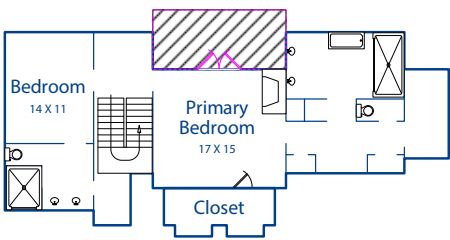
GUEST HOUSE
644 SqFt

TOTAL
5,429 SqFt

Main Level



Upper Level



GARAGE
720 SqFt

This model is for use as a visual tool only. Some measurements are estimates. Therefore, no appraisal value should be inferred.

SPECIFICS



4 Bedrooms



4 Full, 1 Half Bathrooms



5,429 SqFt



3.33 Acres

Interior:..... Plaster
Exterior:..... Stucco, Stone
Fireplace:..... 4 Interior, 2 Exterior, 1 Fire Pit
Heat:..... Heat Pumps
Air Conditioning:..... Yes

Roof: Slate Tile
Floors:..... Tile, Wide Plank Oak
Garage 2-Car
Year Built: 2025

2.5% Buyers Brokerage Compensation | Brokerage Compensation not binding unless confirmed by separate agreement among applicable parties.