



# 1579 GRIFFIN ROAD

PEBBLE BEACH, CALIFORNIA

## SPACIOUS PEBBLE BEACH RETREAT

\$5,250,000

[PebbleBeachGem.com](https://PebbleBeachGem.com)



SCAN ME

Hold up your phone's camera to visit the property's website.

Nestled in the heart of Pebble Beach, 1579 Griffin Road is a spacious retreat spanning 5,503 SqFt, with 6 bedrooms and 4.5 elegantly appointed bathrooms. Set on a gated 1.13 acre lot, surrounded by the serene Del Monte Forest. It's the things you can't change about this property that make it special. Nestled next to open space at the end of a cul-de-sac, it offers easy access to nature, perfect for hiking and outdoor adventures. Its west-facing orientation invites abundant sunshine, filling the home with natural light throughout the day. The serene atmosphere enhances the feeling of tranquility, while the thoughtfully designed floor plan ensures seamless inside-out living, creating a rare and special place to call home. The chef's kitchen is a culinary dream, featuring top-tier appliances, custom cabinetry, a french pizza oven and a generous island and breakfast bar for entertaining. The kitchen flows effortlessly through French doors to the patio with a gorgeous outdoor fireplace. Other highlights include a lavish primary suite with a spa-inspired bath, dual vanities, and a walk-in closet, a 3-car garage, and lush gardens with fruit trees and meandering pathways. Just moments from iconic golf courses, world-class dining, and breathtaking ocean vistas, this Pebble Beach gem is an incredible opportunity to experience California's coastal elegance at its finest.



**COLDWELL  
BANKER**

831.214.1990 | DRE#00891159  
[TimAllenProperties.com](https://TimAllenProperties.com)  
[Team@TimAllenProperties.com](mailto:Team@TimAllenProperties.com)



**TIM ALLEN**  
PROPERTIES TEAM

The property information herein is derived from various sources that may include, but not be limited to, county records and the Multiple Listing Service, and it may include approximations. Although the information is believed to be accurate, it is not warranted and you should not rely upon it without personal verification. ©2024 Coldwell Banker. All Rights Reserved. Coldwell Banker and the Coldwell Banker logos are trademarks of Coldwell Banker Real Estate LLC. The Coldwell Banker® System is comprised of company owned offices which are owned by a subsidiary of Anywhere Advisors LLC and franchised offices which are independently owned and operated. The Coldwell Banker System fully supports the principles of the Fair Housing Act and the Equal Opportunity Act.

# FLOOR PLAN

## UPPER LEVEL

1,339 SqFt

## MAIN LIVING AREA

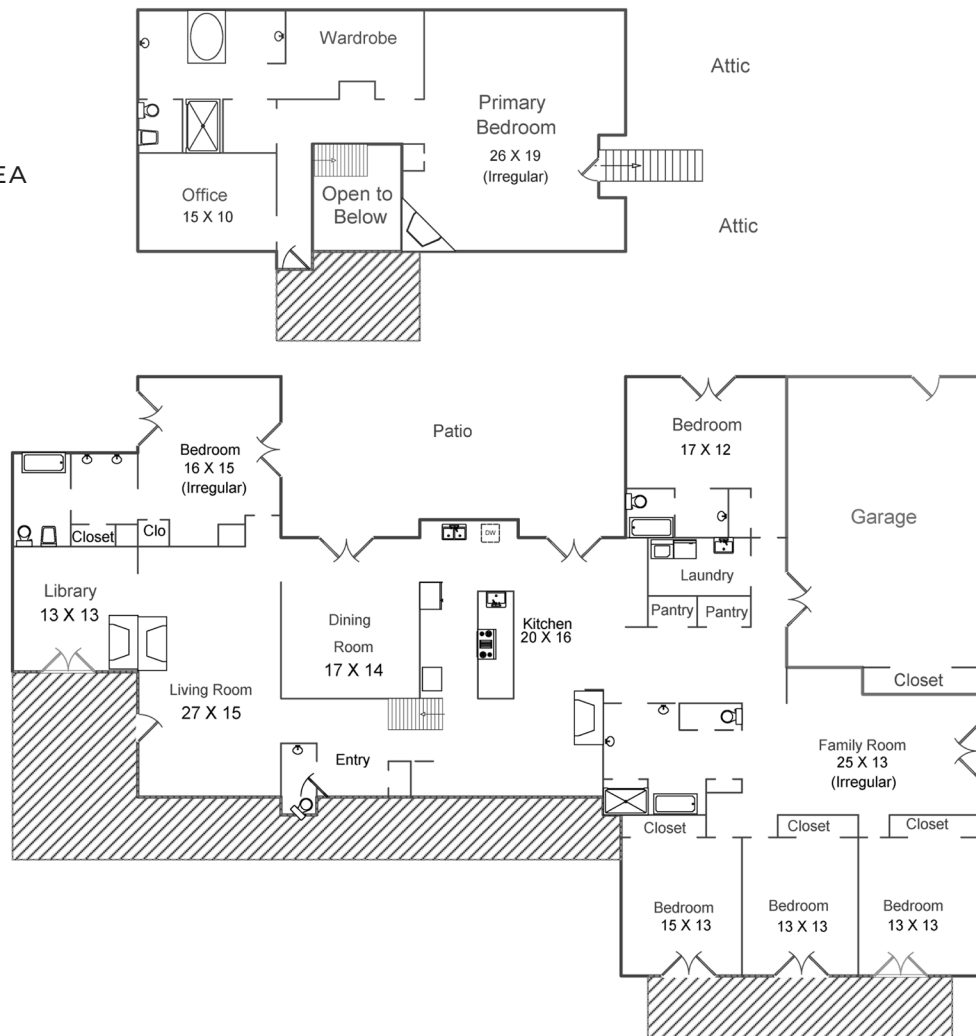
4,164 SqFt

## TOTAL

5,503 SqFt

## GARAGE

738 SqFt



This model is for use as a visual tool only. Some measurements are estimates. Therefore, no appraisal value should be inferred.

# SPECIFICS



6 Bedrooms



4 Full, 1 Half Bathrooms



5,503 SqFt



1.13 Acres

Interior: ..... Plaster

Exterior: ..... Stucco

Fireplace: ..... 3 Indoor & 1 Outdoor

Heat: ..... Central Forced Air

Roof: ..... Cement Tile

Floors: ..... Hardwood, Tile, Carpet

Garage: ..... 3-Car

Year Built: ..... 1989

**2.5% Buyers Brokerage Compensation** | Brokerage Compensation not binding unless confirmed by separate agreement among applicable parties.