



## 6 HUCKLEBERRY COURT

MONTEREY, CALIFORNIA

### MONTEREY HILLTOP HAVEN

\$2,450,000

MontereyVistas.com



#### SCAN ME

Hold up your phone's camera to visit the property's website.

Nestled at the end of a quiet cul-de-sac in Monterey's coveted Skyline Forest, this custom home offers peaceful forest living with filtered views of the Bay and surrounding hills. Featuring 3 bedrooms, 2.5 baths, and a beautifully renovated chef's kitchen with premium appliances and stone counters, the home blends sophistication with comfort. Walnut hardwood floors, soaring ceilings, and picture windows fill the interiors with warmth and natural light. The newly remodeled primary bathroom has a separate bathtub and shower with quartzite counters. Flexible living spaces include a cozy library, a spacious den with backyard access, a formal dining area ideal for entertaining, and a rec room/office. Enjoy the tranquility of the landscaped 0.27-acre lot, low-maintenance outdoor spaces, and a finished 2-car garage with ample storage. Perfectly positioned to enjoy world-class amenities just minutes away—from renowned golf courses and beaches in Pebble Beach, to Carmel's fine dining, galleries, and boutiques, and Monterey's vibrant waterfront, aquarium, and cultural attractions. A rare opportunity for refined living in the heart of the Peninsula.



**COLDWELL  
BANKER**

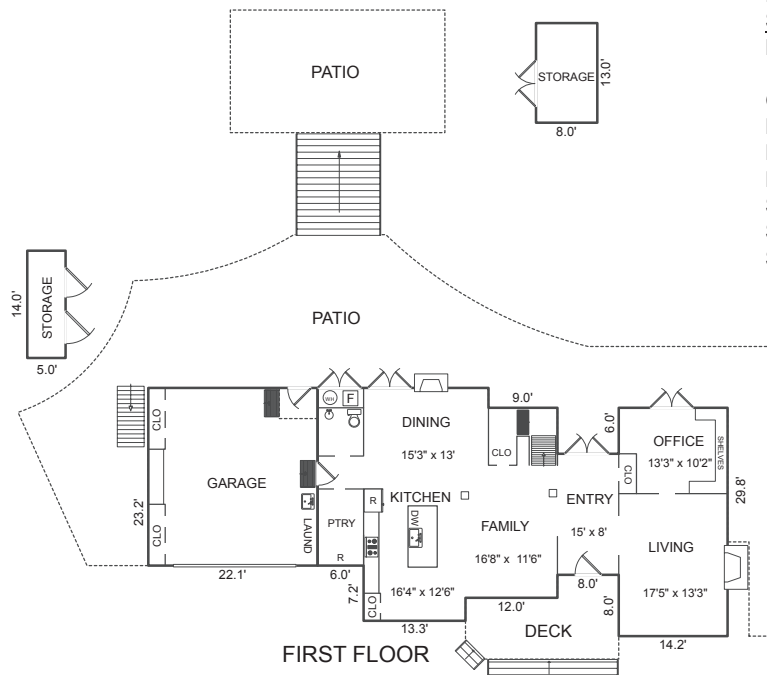
831.214.1990 | DRE#00891159  
TimAllenProperties.com  
Team@TimAllenProperties.com



**TIM ALLEN**  
PROPERTIES TEAM

The property information herein is derived from various sources that may include, but not be limited to, county records and the Multiple Listing Service, and it may include approximations. Although the information is believed to be accurate, it is not warranted and you should not rely upon it without personal verification. ©2024 Coldwell Banker. All Rights Reserved. Coldwell Banker and the Coldwell Banker logos are trademarks of Coldwell Banker Real Estate LLC. The Coldwell Banker® System is comprised of company owned offices which are owned by a subsidiary of Anywhere Advisors LLC and franchised offices which are independently owned and operated. The Coldwell Banker System fully supports the principles of the Fair Housing Act and the Equal Opportunity Act.

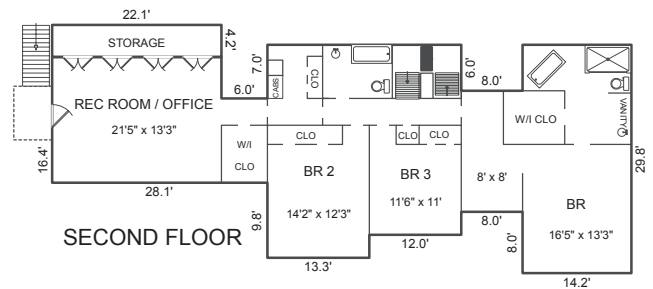
## FLOOR PLAN



## AREA CALCULATIONS

(approximate)

First Floor:	1,399sf
<u>Second Floor:</u>	<u>1,582</u>
Net Livable Area:	2,981sf
Garage:	513
Patio:	1,692
Patio:	448
Deck:	181
Storage:	104
Storage:	93
Storage:	70



This model is for use as a visual tool only. Some measurements are estimates. Therefore, no appraisal value should be inferred.

## SPECIFICS



## 3 Bedrooms



## 2 Full, 1 Half Bathrooms



2,981 SqFt



11,904 SqFt Lot

Interior: ..... Plaster

Exterior: ..... Wood

Fireplace: .....2

Heat:.....Central Forced Air

Roof: ..... Composition

Floors: .....Walnut Hardwood, Carpet

Garage: .....2-Car

Year Built: .....1986

**2.5% Buyers Brokerage Compensation** | Brokerage Compensation not binding unless confirmed by separate agreement among applicable parties.