



Heritage Oaks, Section 1
 Plat Cabinet File No. 6848-685A
 Plat Records of Washington
 County, Texas

Plotted Reference "C"
 at D 334 92.

Plotted Reference "A"
 at Center 0.608 AC.

Ock View Lane
 (public right-of-way)
 (55' ROW)

Pecan Crossing Court
 (public right-of-way)
 (55' ROW)

Corner of 25' ROW
 and 25' ROW

Corner of 25' ROW
 and 25' ROW

Corner of 25' ROW
 and 25' ROW

Corner of 25' ROW
 and 25' ROW

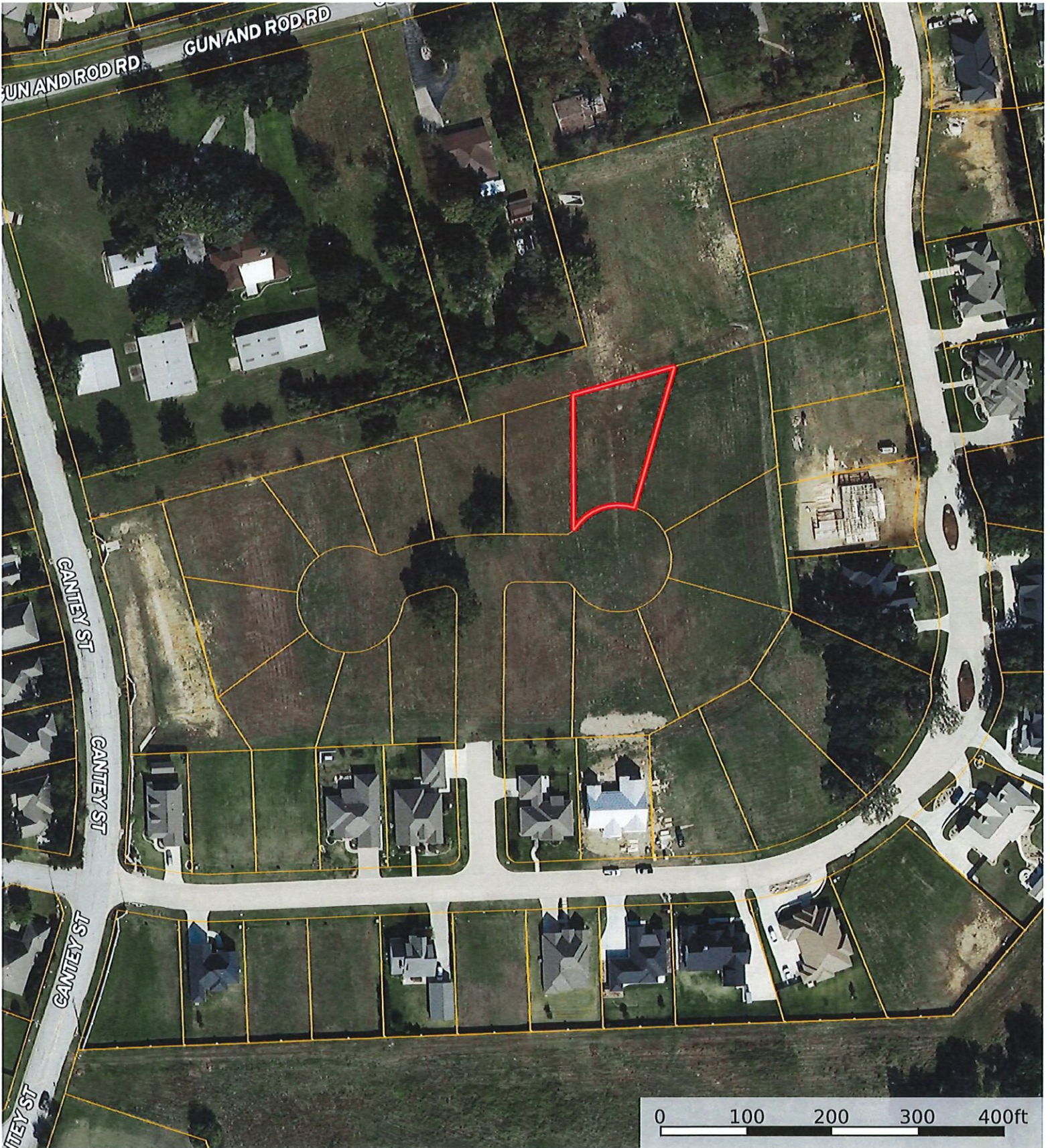
Corner of 25' ROW
 and 25' ROW

Corner of 25' ROW
 and 25' ROW

Corner of 25' ROW
 and 25' ROW



 Boundary



Boundary

