



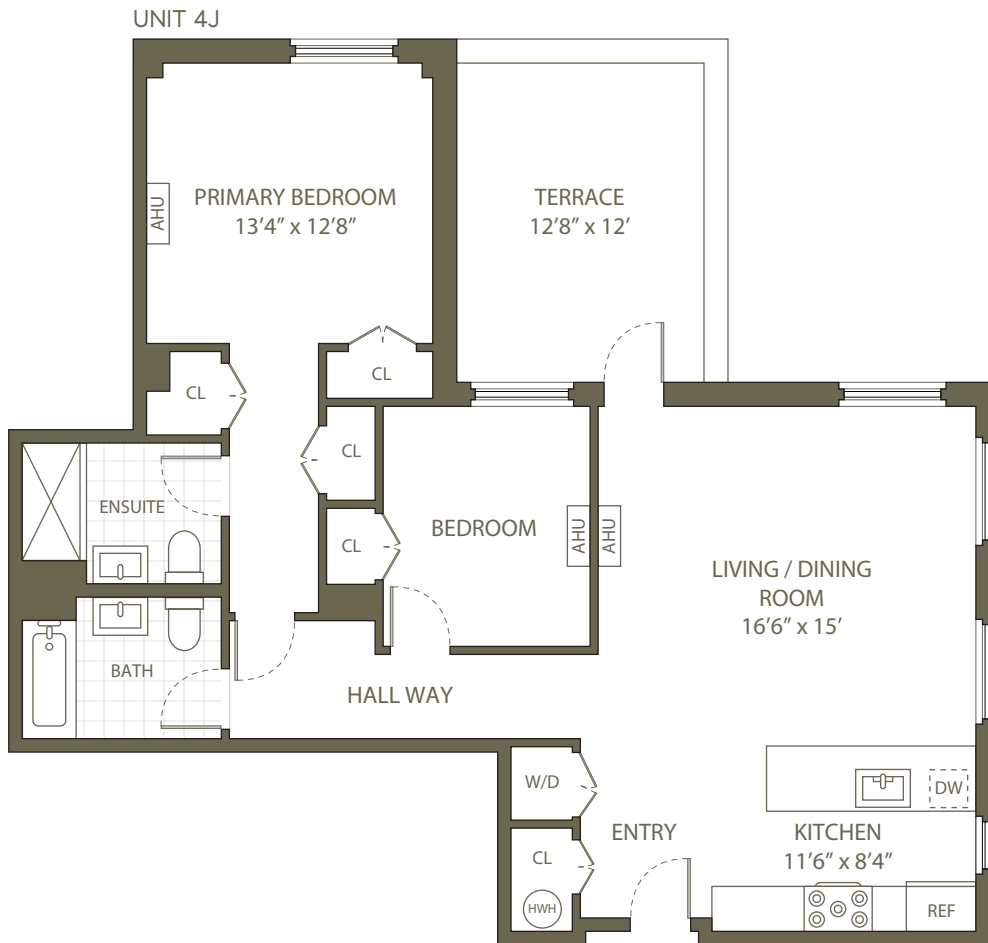
E calvertcollection@corcoran.com  
P (718) 422-2586  
W www.calvertcollection.nyc

625 NEW YORK AVENUE  
Unit 4J  
BROOKLYN NY 11203

Interior 1,055 sf / 98 sm  
Bedrooms 2  
Bathrooms 2

Exterior 184 sf / 17 sm  
1 Terrace

N, E  
J -line: 4th  
Unit 4J



Purchasers should refer to the offering plan for further detail. This is not an offering. The complete offering terms are in an offering plan available from sponsor 625 new york 2022 llc, File no. CD24-0299. All dimensions are approximate and subject to normal construction variances and tolerances. Plans and dimensions may contain minor variations from floor to floor. The square footage on this floor plan exceeds the usable square footage. The furniture depicted herein is not included in the sale of the unit. Sponsor reserves the right to make changes in accordance with the terms of the offering plan. Sponsor address: 535 flatbush avenue, ste. 313, brooklyn, new york 11225. Equal housing opportunity.