

1304 S STREET NW

WASHINGTON, DC 20009



MAIN LEVEL

710 SQ FT

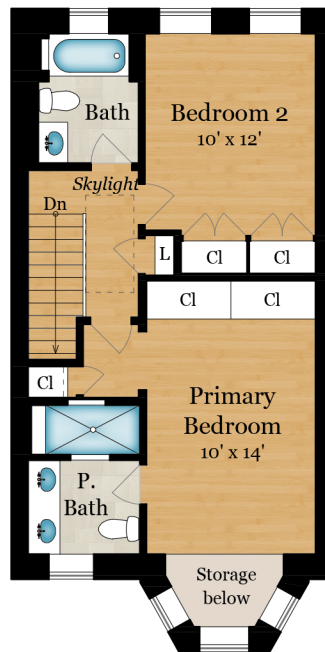
Estimated Total Finished Square Footage: 2,105 SQ FT

Above-Grade: 1,420 SQ FT Below-Grade: 685 SQ FT

Plus 20 SQ FT Mech Room on Lower Level

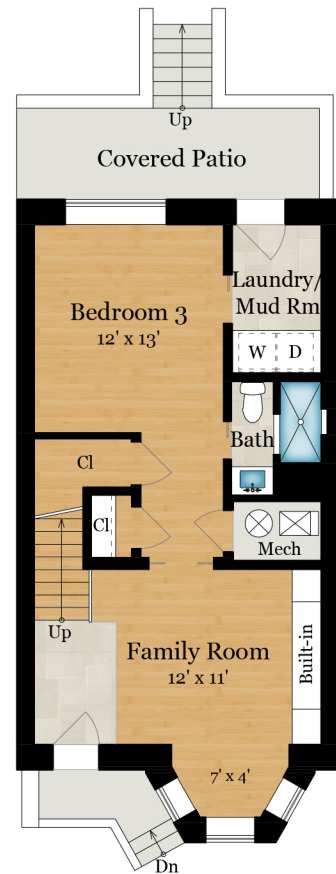
Calculated per ANSI Standard Z765-2021.

* Estimated Total Finished & Unfinished Square Footage: 2,125 SQ FT



UPPER LEVEL

710 SQ FT



LOWER LEVEL

685 SQ FT