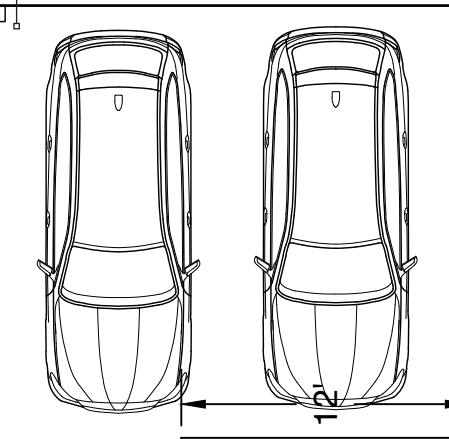


STUCCO RETAINING WALL WITH STONE CAP - 36" HEIGHT MAX. 24" TYPICAL HEIGHT

TURN-AROUND AREA

CARPORIT - SEE ELEVATIONS FOR FURTHER INFORMATION

12'-9 3/4"



24'

8'-6"

20'

STONE FIREPLACE (WOOD-BURNING)
ROOF OVERHANG (12')

6'X12' STORAGE AREA
(LADDER ACCESS TO ATTIC AREA)

8" X 8" POSTS FOR CORNER SUPPORTS

PLANTS TO BE RELOCATED ON-SITE AT DESIGNER'S DIRECTION
RE-GRADE TO ELIMINATE LOW-SPOT AND INCREASE DRAINAGE FLOW

EXISTING PORCH AREA

RIVER STONE ADDED TO RUNN-OFF AREAS

3" THICK STONE MANTLE (GRAY CRAB ORCHARD)

DRIVEWAY TO BE REGRADED TO ELIMINATE 2 STEPS
NEW BRICK STEP AT SIDE DOOR

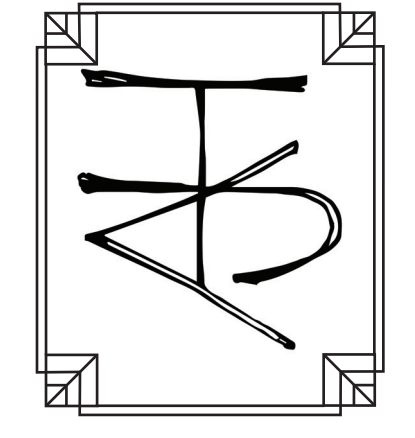
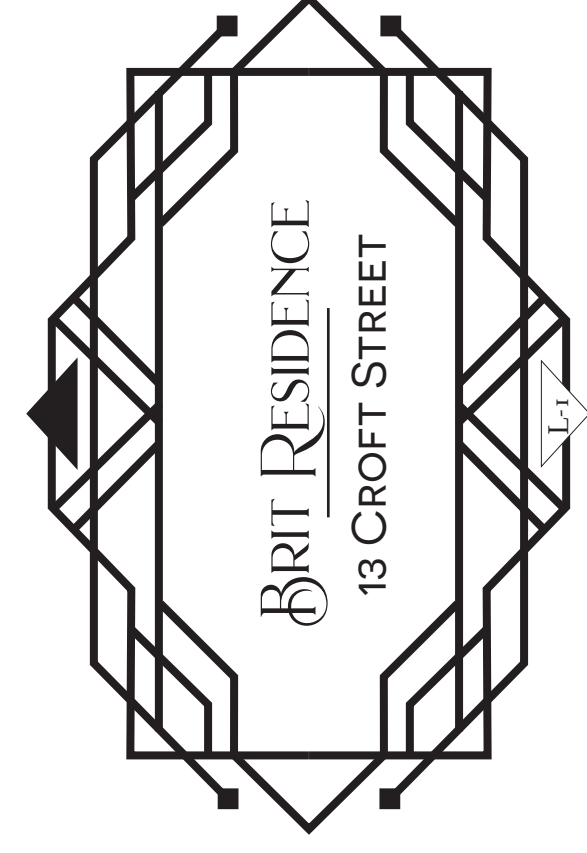
EXISTING DRIVEWAY TO BE REMOVED

NEW BRICK STEPS (EXISTING TO BE DEMOLISHED)

NEW CONCRETE WALKWAY - MINOR REGRADE TO ELIMINATE STEP

9'-8 3/4"

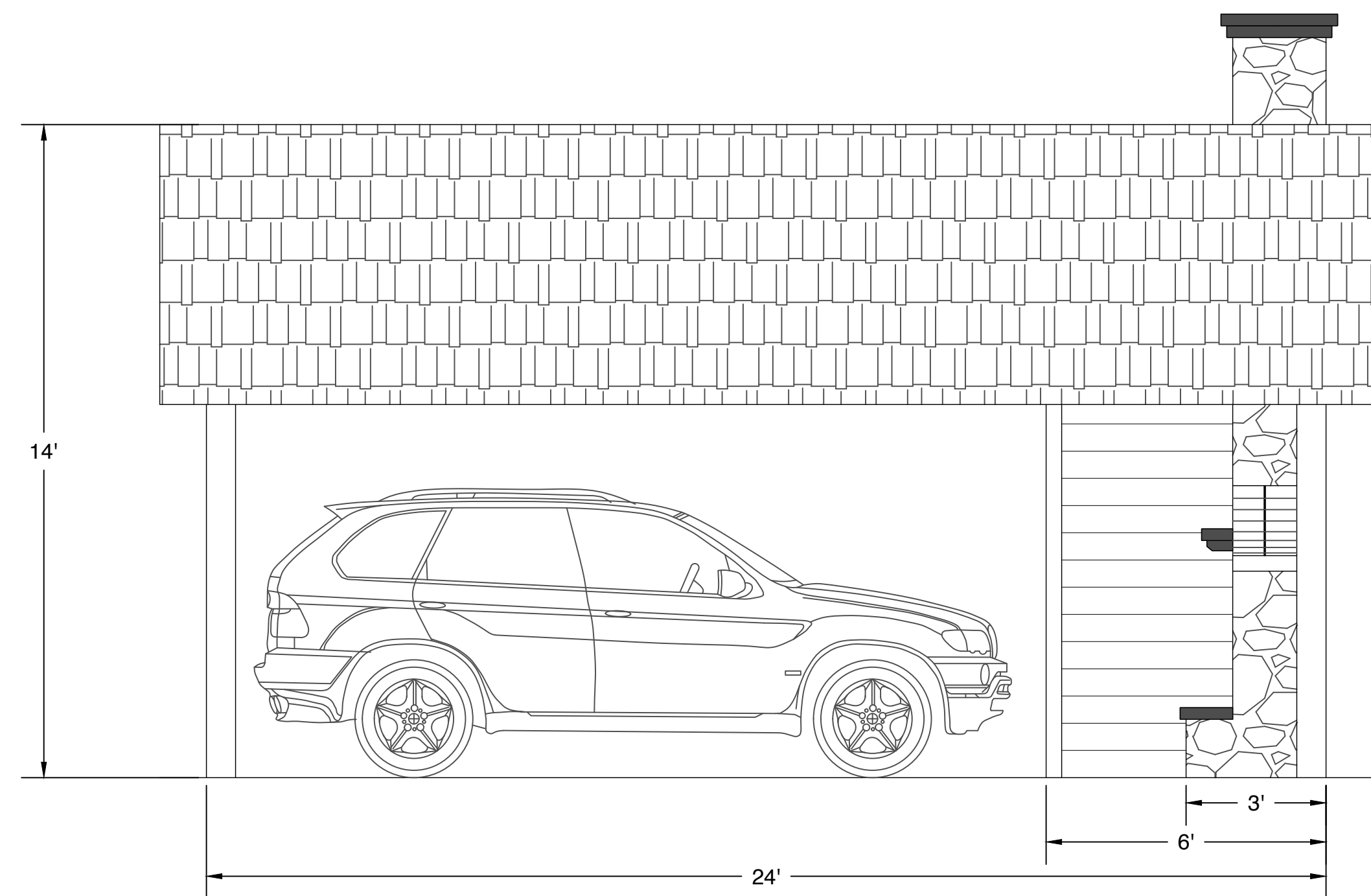
8'



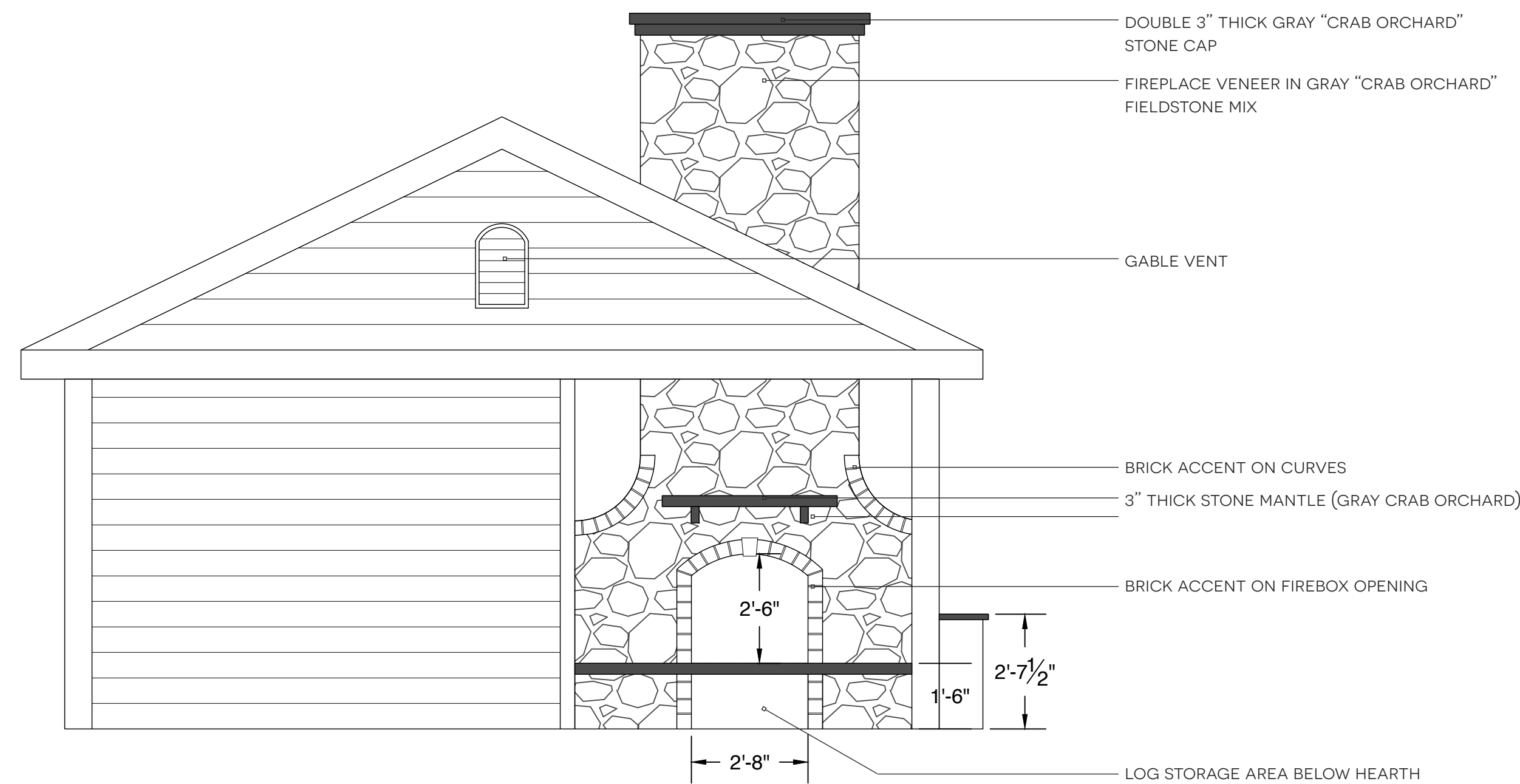
DESIGNED:
TIM FREITAG
DRAWN:
TIM FREITAG
DATE:
6 JULY 2020

SCALE: 1/8" = 1'-0"

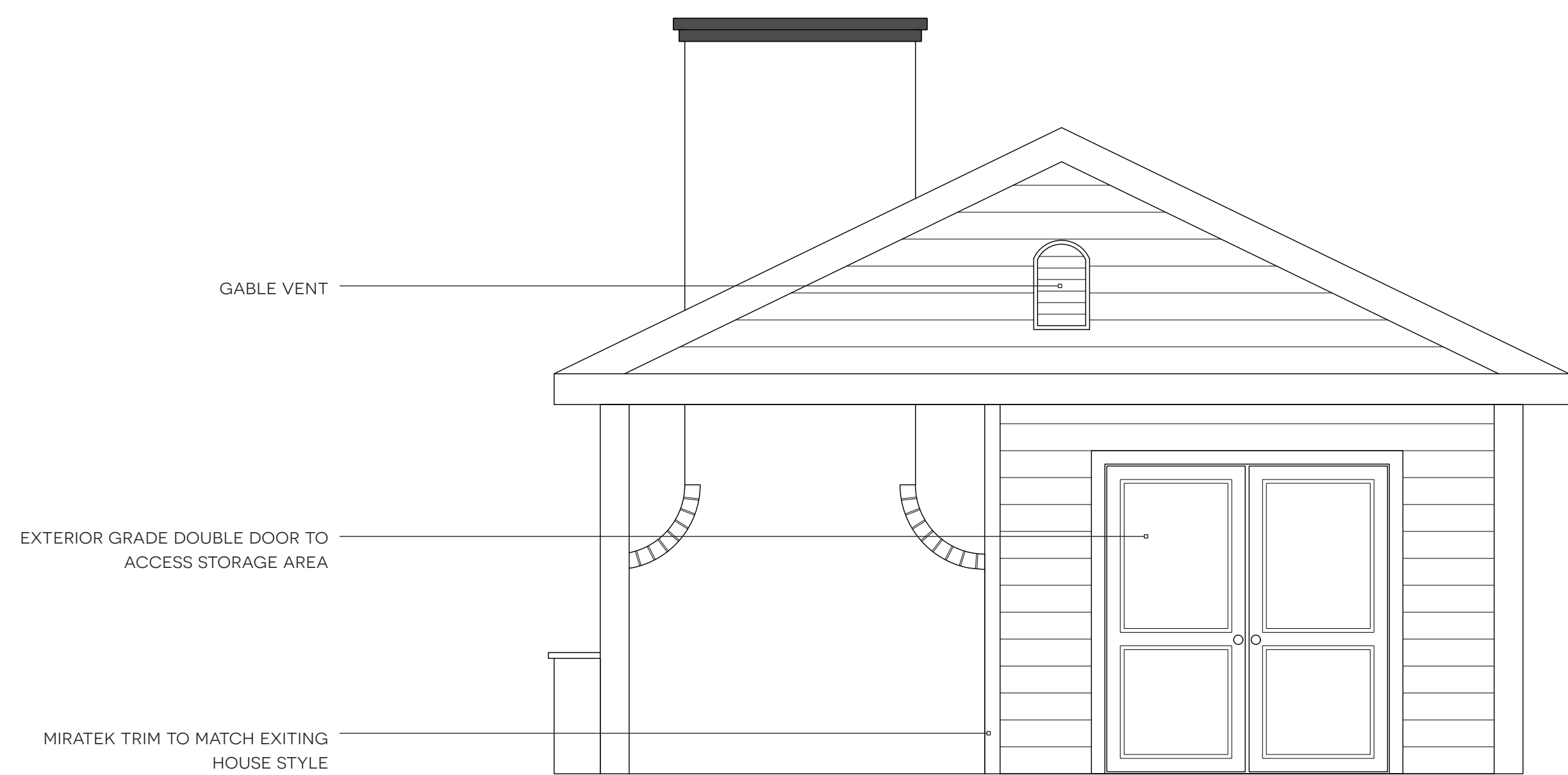
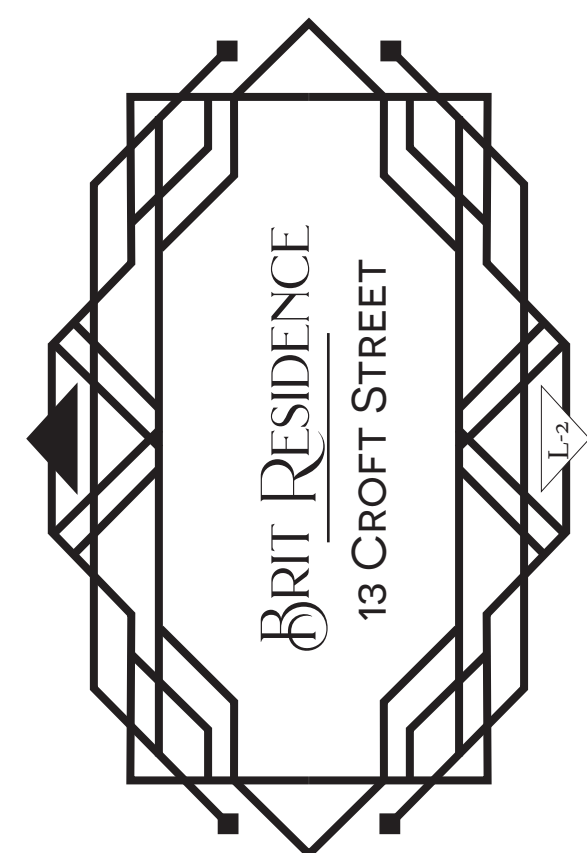
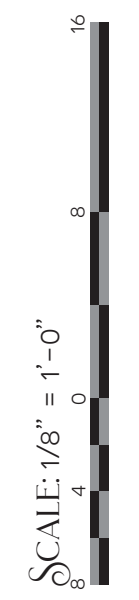
DESIGNED:
TIM FREITAG
DRAWN:
TIM FREITAG
DATE:
6 JULY 2020



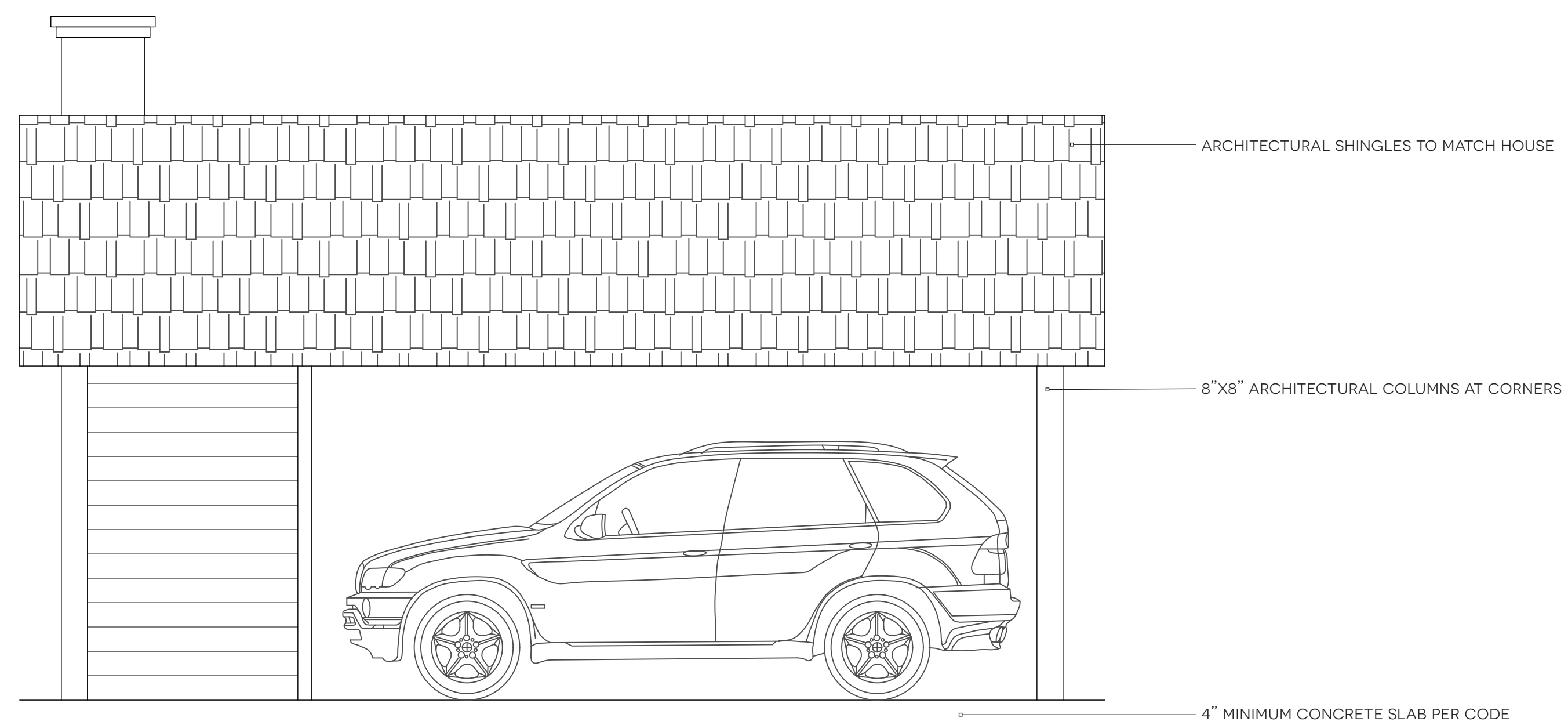
RIGHT ELEVATION
SCALE: 3/8" = 1'-0"



FRONT ELEVATION
SCALE: 3/8" = 1'-0"



REAR ELEVATION
SCALE: 3/8" = 1'-0"



LEFT ELEVATION
SCALE: 3/8" = 1'-0"

