

SKY VILLA

A

FLOOR 19, LOWER LEVEL

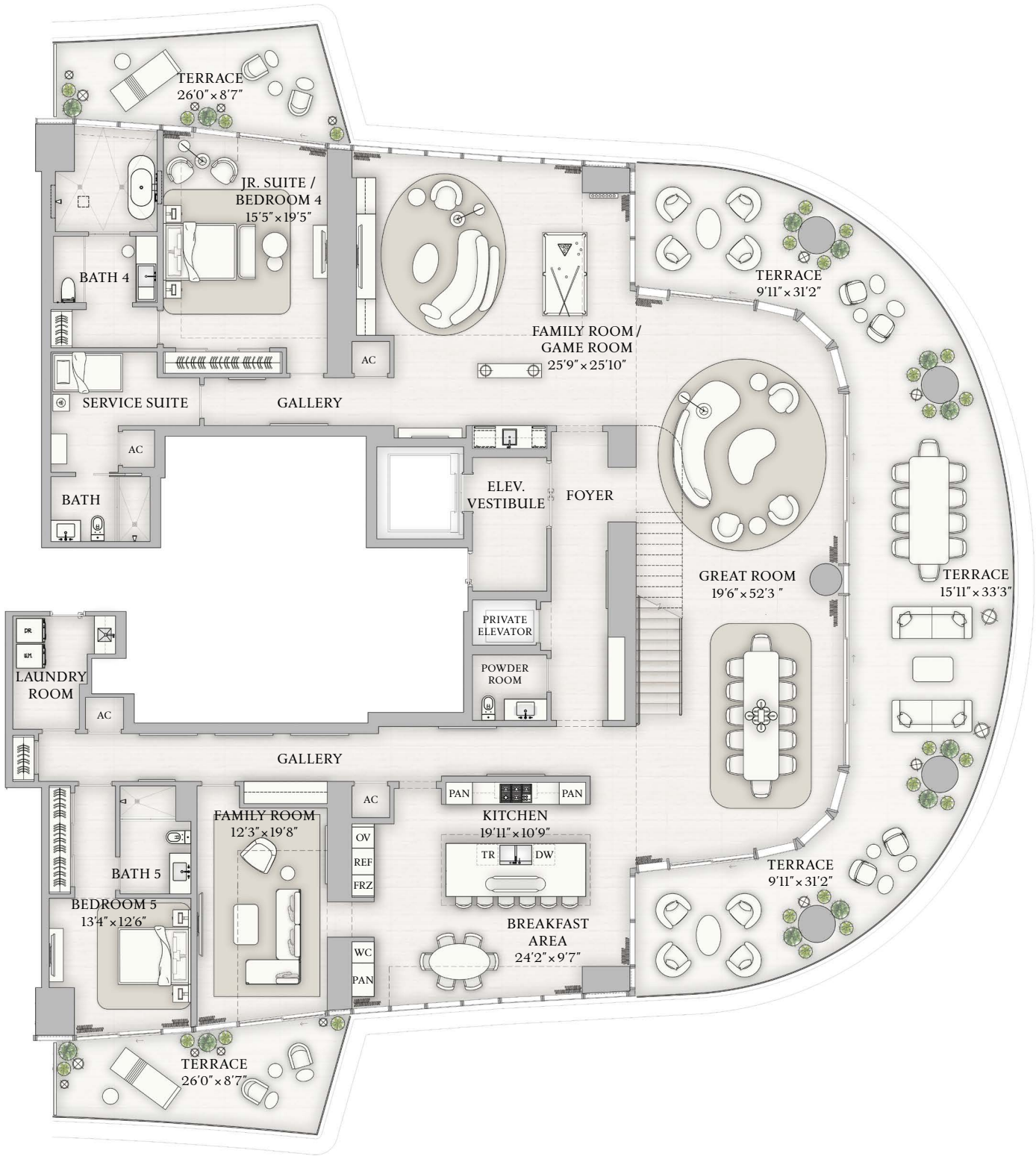
LOWER LEVEL INTERIOR
4,805 SF | 446 SQM

LOWER LEVEL EXTERIOR
1,675 SF | 156 SQM

TOTAL INTERIOR
9,277 SF | 862 SQM

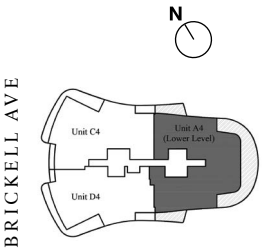
TOTAL EXTERIOR
2,253 SF | 209 SQM

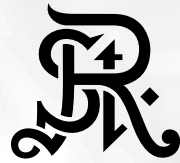
5 BEDROOMS
7 BATHROOMS
2 POWDER ROOMS
DOUBLE HEIGHT GREAT ROOM
EXPANSIVE DOUBLE HEIGHT TERRACE
PRIMARY SUITE WITH OFFICE
FAMILY ROOM / GAME ROOM
FAMILY ROOM / BEDROOM 6
INTERNAL ELEVATOR
SERVICE SUITE



BISCAYNE BAY

The dimensions stated for this Unit floor plan are approximate because there are various recognized methods for calculating the square footage of a Unit. The square footage stated here is calculated from the exterior boundaries of the exterior walls to the centerline of interior demising walls without deductions for cutouts, curves, or architectural features. This method typically results in quoted dimensions greater than the dimensions that would be determined by using other accepted methods. The definition of "Unit" and the calculation method to be relied upon is set forth in Developer's prospectus and the method set forth in the Developer's prospectus may result in a square footage calculation less than the method used here. Dimensions and Unit configuration may change during construction. The furniture illustrated is not included with purchase; the floorplan layout is not a guarantee on your use of space but is one example of uses of space. Consult the Developer's prospectus to understand the calculation of the Unit square footage and dimensions and what is included with purchase. Prices are not based on the square footage no matter the method of calculation of Unit dimensions and all prices are subject to change at any time.



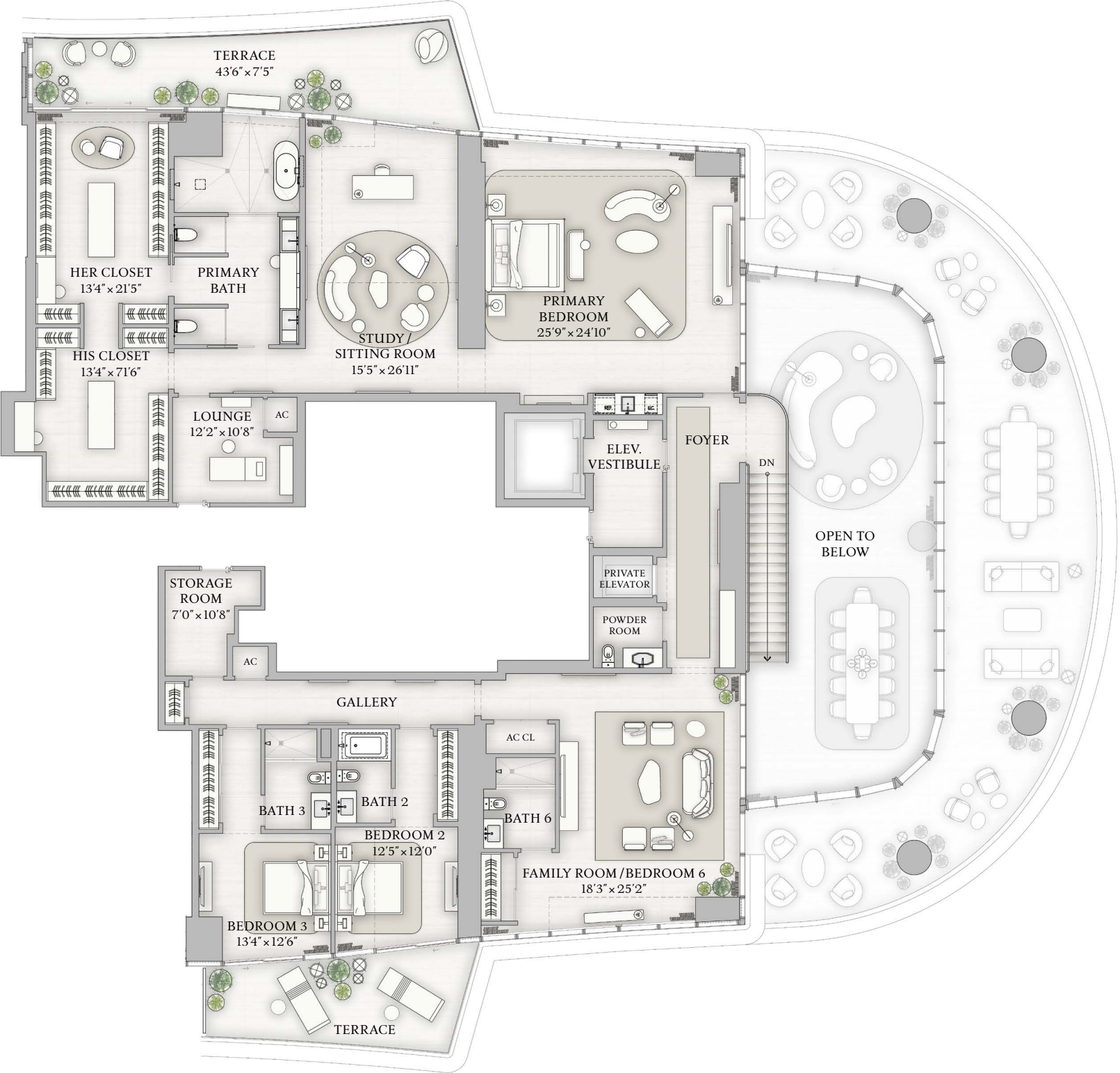


SKY VILLA
A
FLOOR 19, UPPER LEVEL

UPPER LEVEL INTERIOR
4,472 SF | 416 SQM
UPPER LEVEL EXTERIOR
578 SF | 53 SQM

TOTAL INTERIOR
9,277 SF | 862 SQM
TOTAL EXTERIOR
2,253 SF | 209 SQM

- 5 BEDROOMS
- 7 BATHROOMS
- 2 POWDER ROOMS
- DOUBLE HEIGHT GREAT ROOM
- EXPANSIVE DOUBLE HEIGHT TERRACE
- PRIMARY SUITE WITH OFFICE
- FAMILY ROOM / GAME ROOM
- FAMILY ROOM / BEDROOM 6
- INTERNAL ELEVATOR
- SERVICE SUITE



BISCAYNE BAY

The dimensions stated for this Unit floor plan are approximate because there are various recognized methods for calculating the square footage of a Unit. The square footage stated here is calculated from the exterior boundaries of the exterior walls to the centerline of interior demising walls without deductions for cutouts, curves, or architectural features. This method typically results in quoted dimensions greater than the dimensions that would be determined by using other accepted methods. The definition of "Unit" and the calculation method to be relied upon is set forth in Developer's prospectus and the method set forth in the Developer's prospectus may result in a square footage calculation less than the method used here. Dimensions and Unit configuration may change during construction. The furniture illustrated is not included with purchase; the floorplan layout is not a guarantee on your use of space but is one example of uses of space. Consult the Developer's prospectus to understand the calculation of the Unit square footage and dimensions and what is included with purchase. Prices are not based on the square footage no matter the method of calculation of Unit dimensions and all prices are subject to change at any time.

