



ST REGIS
MIAMI
THE RESIDENCES

PENTHOUSE

LPH A

FLOORS 46 – 47, LOWER LEVEL

Future residences located at:
1809 Brickell Avenue
Miami, Florida 33129



ORAL REPRESENTATIONS CANNOT BE RELIED UPON AS CORRECTLY STATING REPRESENTATIONS OF THE DEVELOPER. FOR CORRECT REPRESENTATIONS, MAKE REFERENCE TO THIS BROCHURE AND TO THE DOCUMENTS REQUIRED BY SECTION 718.503, FLORIDA STATUTES, TO BE FURNISHED BY A DEVELOPER TO A BUYER OR LESSEE.

The St. Regis Residences, Miami are developed by 1809 Brickell Property Owner, LLC (“Developer”). The St. Regis Residences, Miami are not owned, developed, or sold by Marriott International, Inc. or its affiliates (“Marriott”). The Developer uses the St. Regis marks under a license from Marriott, which has not confirmed the accuracy of any of the statements or representations made about the project by Developer. Sketches, renderings, or photographs depicting a floor plan are proposed only and the Developer reserves the right to modify, revise, or withdraw any or all of the same in Developer’s sole discretion without prior notice. Locations and layouts of windows, doors, closets, plumbing fixtures, and structural and architectural design elements may vary from concept to actual construction. All depictions of appliances, plumbing fixtures, counters, countertops, cabinets, soffits, floor coverings, and other matters of design and décor detail or floor plans are conceptual and such drawings shown should not be relied upon as representations, express or implied, of the final detail of The St. Regis Residences, Miami or any Unit. There is no guarantee that any proposed hotel brands will be involved as depicted or at all upon, or following, the completion of The St. Regis Residences, Miami. Consult the prospectus of the Developer to understand this offering, the amenities, the proposed budgets, terms, conditions, specifications, fees, Unit dimensions, site plans, and to learn what is included with purchase and by payment of regular assessments. All prices are subject to change at any time and without notice and do not include optional features, design packages, furniture packages, or premiums for upgrades to any Unit. © 1809 Brickell Property Owner, LLC 2024. 

6 BEDROOMS | 7 BATHROOMS | 2 POWDER ROOMS
INTERIOR: 4,772 SF | 443 SQM EXTERIOR: 1,529 SF | 142 SQM
TOTAL INTERIOR: 8,687 SF | 807 SQM TOTAL EXTERIOR: 1,651 SF | 153 SQM

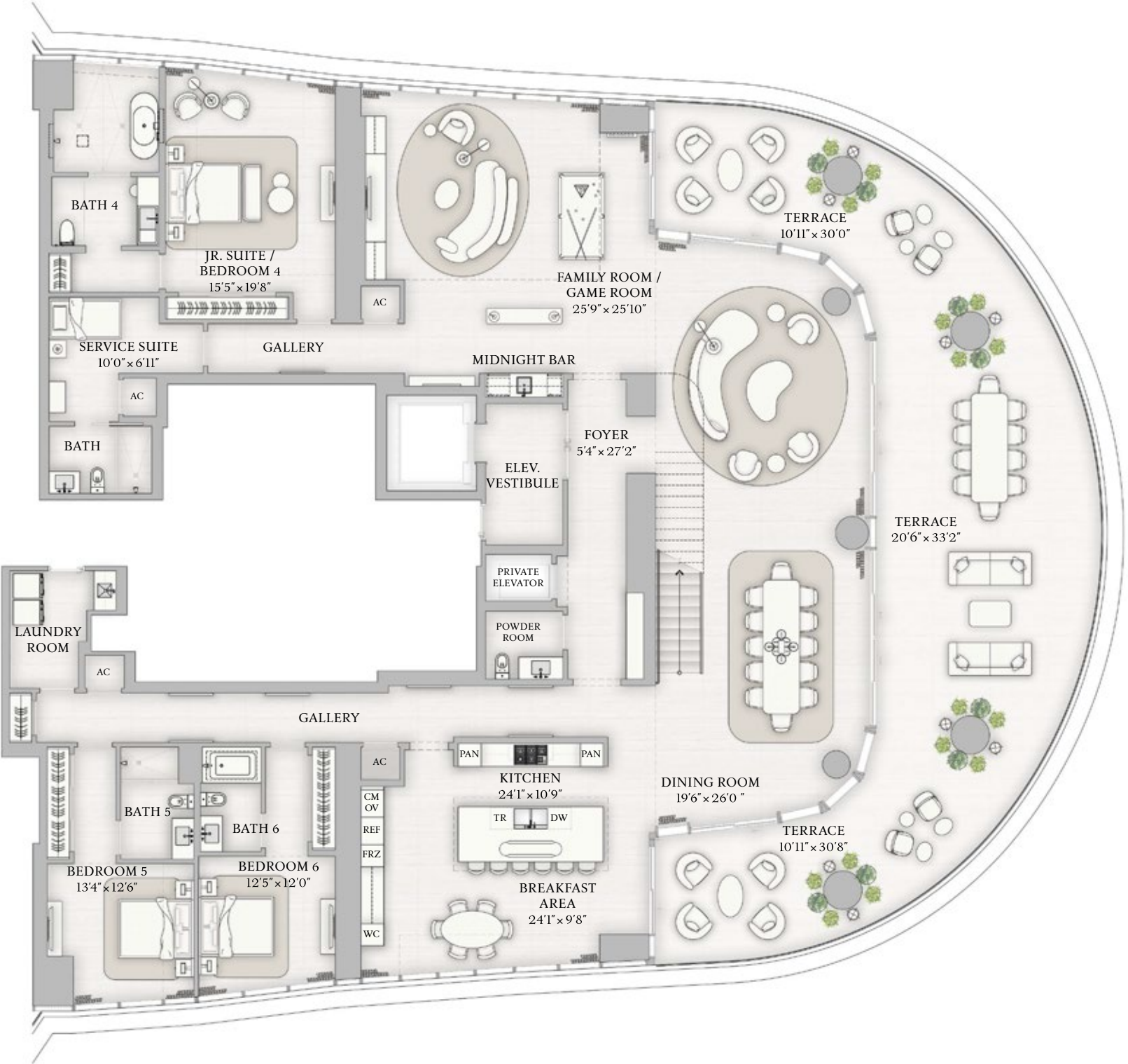


PENTHOUSE
LPH A
FLOORS 46–47, LOWER LEVEL

LOWER LEVEL INTERIOR
4,772 SF | 443 SQM
LOWER LEVEL EXTERIOR
1,529 SF | 142 SQM

TOTAL INTERIOR
8,687 SF | 807 SQM
TOTAL EXTERIOR
1,651 SF | 153 SQM

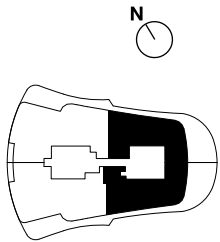
- 6 BEDROOMS
- 7 BATHROOMS
- 2 POWDER ROOMS
- DOUBLE HEIGHT GREAT ROOM
- EXPANSIVE DOUBLE HEIGHT TERRACE
- PRIMARY SUITE WITH OFFICE
- GAME ROOM
- FAMILY ROOM
- INTERNAL ELEVATOR
- SERVICE SUITE



BISCAYNE BAY

The dimensions stated for this Unit floor plan are approximate because there are various recognized methods for calculating the square footage of a Unit. The square footage stated here is calculated from the exterior boundaries of the exterior walls to the centerline of interior demising walls without deductions for cutouts, curves, or architectural features. This method typically results in quoted dimensions greater than the dimensions that would be determined by using other accepted methods. The definition of "Unit" and the calculation method to be relied upon is set forth in Developer's prospectus and the method set forth in the Developer's prospectus may result in a square footage calculation less than the method used here. Dimensions and Unit configuration may change during construction. The furniture illustrated is not included with purchase; the floorplan layout is not a guarantee on your use of space but is one example of uses of space. Consult the Developer's prospectus to understand the calculation of the Unit square footage and dimensions and what is included with purchase. Prices are not based on the square footage no matter the method of calculation of Unit dimensions and all prices are subject to change at any time.

BRICKELL AVE





ST REGIS
MIAMI
THE RESIDENCES

PENTHOUSE


LPH A

FLOORS 46 – 47, UPPER LEVEL

Future residences located at:
1809 Brickell Avenue
Miami, Florida 33129



ORAL REPRESENTATIONS CANNOT BE RELIED UPON AS CORRECTLY STATING REPRESENTATIONS OF THE DEVELOPER. FOR CORRECT REPRESENTATIONS, MAKE REFERENCE TO THIS BROCHURE AND TO THE DOCUMENTS REQUIRED BY SECTION 718.503, FLORIDA STATUTES, TO BE FURNISHED BY A DEVELOPER TO A BUYER OR LESSEE.

The St. Regis Residences, Miami are developed by 1809 Brickell Property Owner, LLC (“Developer”). The St. Regis Residences, Miami are not owned, developed, or sold by Marriott International, Inc. or its affiliates (“Marriott”). The Developer uses the St. Regis marks under a license from Marriott, which has not confirmed the accuracy of any of the statements or representations made about the project by Developer. Sketches, renderings, or photographs depicting a floor plan are proposed only and the Developer reserves the right to modify, revise, or withdraw any or all of the same in Developer’s sole discretion without prior notice. Locations and layouts of windows, doors, closets, plumbing fixtures, and structural and architectural design elements may vary from concept to actual construction. All depictions of appliances, plumbing fixtures, counters, countertops, cabinets, soffits, floor coverings, and other matters of design and décor detail or floor plans are conceptual and such drawings shown should not be relied upon as representations, express or implied, of the final detail of The St. Regis Residences, Miami or any Unit. There is no guarantee that any proposed hotel brands will be involved as depicted or at all upon, or following, the completion of The St. Regis Residences, Miami. Consult the prospectus of the Developer to understand this offering, the amenities, the proposed budgets, terms, conditions, specifications, fees, Unit dimensions, site plans, and to learn what is included with purchase and by payment of regular assessments. All prices are subject to change at any time and without notice and do not include optional features, design packages, furniture packages, or premiums for upgrades to any Unit. © 1809 Brickell Property Owner, LLC 2024. 

6 BEDROOMS | 7 BATHROOMS | 2 POWDER ROOMS
INTERIOR: 3,915 SF | 364 SQM EXTERIOR: 122 SF | 11 SQM
TOTAL INTERIOR: 8,687 SF | 807 SQM TOTAL EXTERIOR: 1,651 SF | 153 SQM

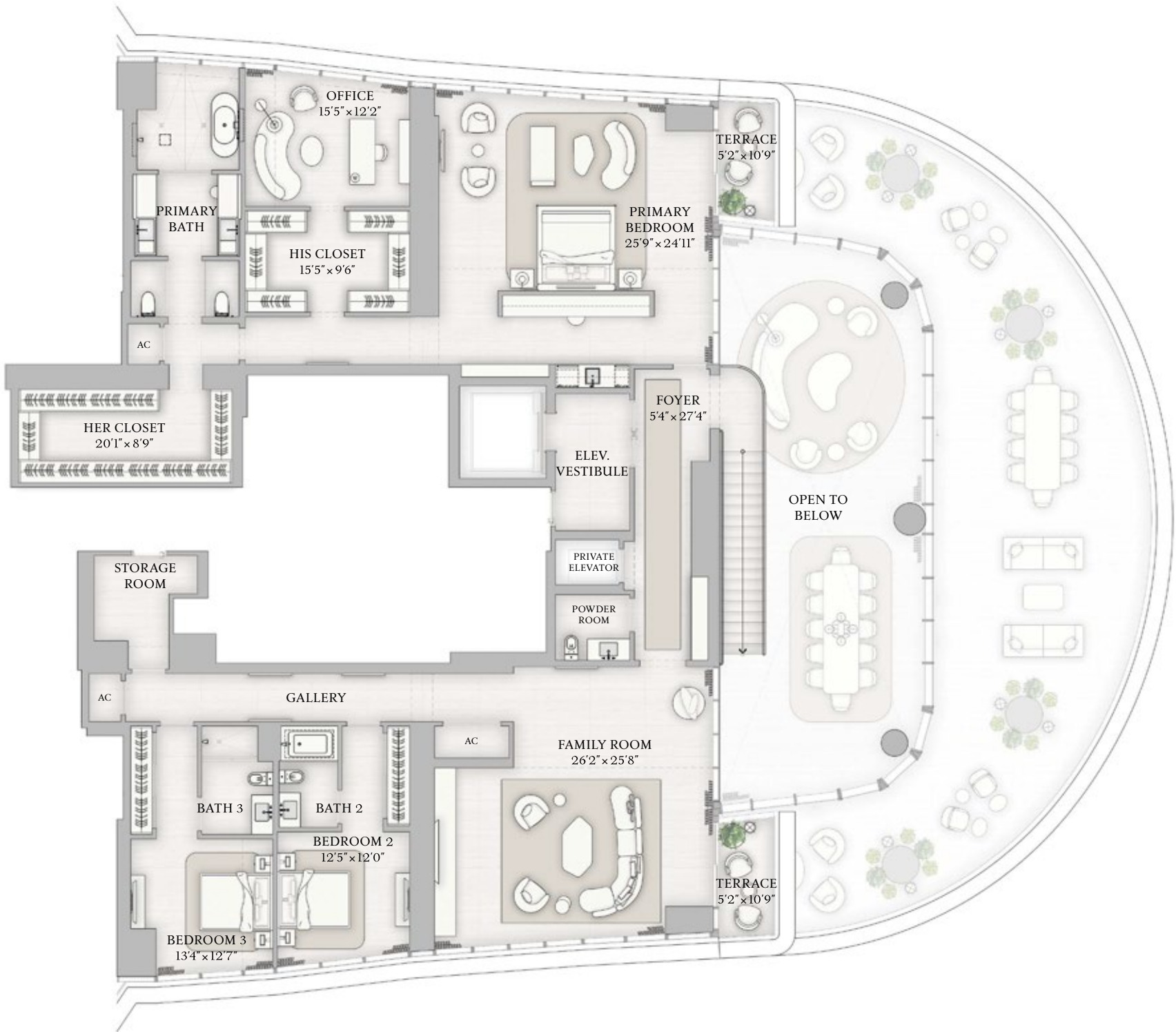


PENTHOUSE
LPH A
FLOORS 46–47, UPPER LEVEL

UPPER LEVEL INTERIOR
3,915 SF | 364 SQM
UPPER LEVEL EXTERIOR
122 SF | 11 SQM

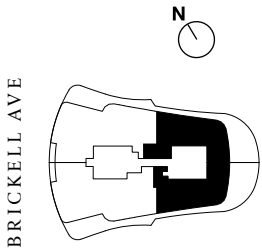
TOTAL INTERIOR
8,687 SF | 807 SQM
TOTAL EXTERIOR
1,651 SF | 153 SQM

- 6 BEDROOMS
- 7 BATHROOMS
- 2 POWDER ROOMS
- DOUBLE HEIGHT GREAT ROOM
- EXPANSIVE DOUBLE HEIGHT TERRACE
- PRIMARY SUITE WITH OFFICE
- GAME ROOM
- FAMILY ROOM
- INTERNAL ELEVATOR
- SERVICE SUITE



BISCAYNE BAY

The dimensions stated for this Unit floor plan are approximate because there are various recognized methods for calculating the square footage of a Unit. The square footage stated here is calculated from the exterior boundaries of the exterior walls to the centerline of interior demising walls without deductions for cutouts, curves, or architectural features. This method typically results in quoted dimensions greater than the dimensions that would be determined by using other accepted methods. The definition of "Unit" and the calculation method to be relied upon is set forth in Developer's prospectus and the method set forth in the Developer's prospectus may result in a square footage calculation less than the method used here. Dimensions and Unit configuration may change during construction. The furniture illustrated is not included with purchase; the floorplan layout is not a guarantee on your use of space but is one example of uses of space. Consult the Developer's prospectus to understand the calculation of the Unit square footage and dimensions and what is included with purchase. Prices are not based on the square footage no matter the method of calculation of Unit dimensions and all prices are subject to change at any time.





ST REGIS
MIAMI
THE RESIDENCES

PENTHOUSE


LPH C

FLOOR 46

Future residences located at:
1809 Brickell Avenue
Miami, Florida 33129



ORAL REPRESENTATIONS CANNOT BE RELIED UPON AS CORRECTLY STATING REPRESENTATIONS OF THE DEVELOPER. FOR CORRECT REPRESENTATIONS, MAKE REFERENCE TO THIS BROCHURE AND TO THE DOCUMENTS REQUIRED BY SECTION 718.503, FLORIDA STATUTES, TO BE FURNISHED BY A DEVELOPER TO A BUYER OR LESSEE.

The St. Regis Residences, Miami are developed by 1809 Brickell Property Owner, LLC ("Developer"). The St. Regis Residences, Miami are not owned, developed, or sold by Marriott International, Inc. or its affiliates ("Marriott"). The Developer uses the St. Regis marks under a license from Marriott, which has not confirmed the accuracy of any of the statements or representations made about the project by Developer. Sketches, renderings, or photographs depicting a floor plan are proposed only and the Developer reserves the right to modify, revise, or withdraw any or all of the same in Developer's sole discretion without prior notice. Locations and layouts of windows, doors, closets, plumbing fixtures, and structural and architectural design elements may vary from concept to actual construction. All depictions of appliances, plumbing fixtures, counters, countertops, cabinets, soffits, floor coverings, and other matters of design and décor detail or floor plans are conceptual and such drawings shown should not be relied upon as representations, express or implied, of the final detail of The St. Regis Residences, Miami or any Unit. There is no guarantee that any proposed hotel brands will be involved as depicted or at all upon, or following, the completion of The St. Regis Residences, Miami. Consult the prospectus of the Developer to understand this offering, the amenities, the proposed budgets, terms, conditions, specifications, fees, Unit dimensions, site plans, and to learn what is included with purchase and by payment of regular assessments. All prices are subject to change at any time and without notice and do not include optional features, design packages, furniture packages, or premiums for upgrades to any Unit. © 1809 Brickell Property Owner, LLC 2024. 

6 BEDROOMS | 6 BATHROOMS | POWDER ROOM
INTERIOR: 6,945 SF | 645 SQM EXTERIOR: 1,184 SF | 110 SQM SQM

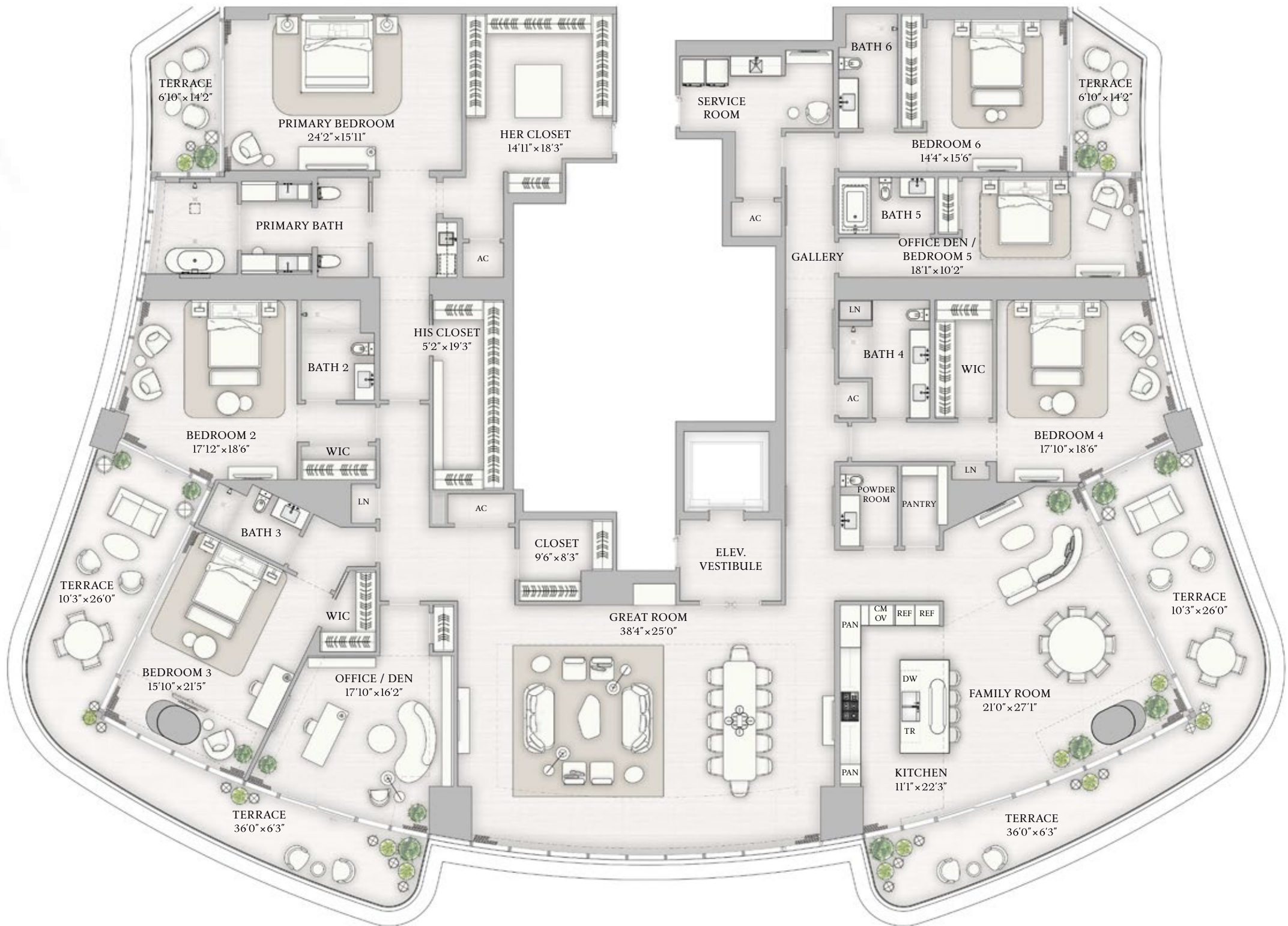


INTERIOR
6,945 SF | 645 SQM

EXTERIOR
1,184 SF | 110 SQM

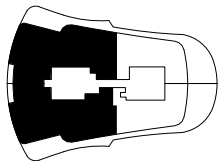
6 BEDROOMS
6 BATHROOMS
POWDER ROOM
OFFICE
EAT-IN KITCHEN AND FAMILY ROOM

STREGIS
MIAMI
THE RESIDENCES



The dimensions stated for this Unit floor plan are approximate because there are various recognized methods for calculating the square footage of a Unit. The square footage stated here is calculated from the exterior boundaries of the exterior walls to the centerline of interior demising walls without deductions for cutouts, curves, or architectural features. This method typically results in quoted dimensions greater than the dimensions that would be determined by using other accepted methods. The definition of "Unit" and the calculation method to be relied upon is set forth in Developer's prospectus and the method set forth in the Developer's prospectus may result in a square footage calculation less than the method used here. Dimensions and Unit configuration may change during construction. The furniture illustrated is not included with purchase; the floorplan layout is not a guarantee on your use of space but is one example of uses of space. Consult the Developer's prospectus to understand the calculation of the Unit square footage and dimensions and what is included with purchase. Prices are not based on the square footage no matter the method of calculation of Unit dimensions and all prices are subject to change at any time.

BRICKELL AVE





ST REGIS
MIAMI
THE RESIDENCES

PENTHOUSE


MPH C

FLOOR 47

Future residences located at:
1809 Brickell Avenue
Miami, Florida 33129



ORAL REPRESENTATIONS CANNOT BE RELIED UPON AS CORRECTLY STATING REPRESENTATIONS OF THE DEVELOPER. FOR CORRECT REPRESENTATIONS, MAKE REFERENCE TO THIS BROCHURE AND TO THE DOCUMENTS REQUIRED BY SECTION 718.503, FLORIDA STATUTES, TO BE FURNISHED BY A DEVELOPER TO A BUYER OR LESSEE.

The St. Regis Residences, Miami are developed by 1809 Brickell Property Owner, LLC ("Developer"). The St. Regis Residences, Miami are not owned, developed, or sold by Marriott International, Inc. or its affiliates ("Marriott"). The Developer uses the St. Regis marks under a license from Marriott, which has not confirmed the accuracy of any of the statements or representations made about the project by Developer. Sketches, renderings, or photographs depicting a floor plan are proposed only and the Developer reserves the right to modify, revise, or withdraw any or all of the same in Developer's sole discretion without prior notice. Locations and layouts of windows, doors, closets, plumbing fixtures, and structural and architectural design elements may vary from concept to actual construction. All depictions of appliances, plumbing fixtures, counters, countertops, cabinets, soffits, floor coverings, and other matters of design and décor detail or floor plans are conceptual and such drawings shown should not be relied upon as representations, express or implied, of the final detail of The St. Regis Residences, Miami or any Unit. There is no guarantee that any proposed hotel brands will be involved as depicted or at all upon, or following, the completion of The St. Regis Residences, Miami. Consult the prospectus of the Developer to understand this offering, the amenities, the proposed budgets, terms, conditions, specifications, fees, Unit dimensions, site plans, and to learn what is included with purchase and by payment of regular assessments. All prices are subject to change at any time and without notice and do not include optional features, design packages, furniture packages, or premiums for upgrades to any Unit. © 1809 Brickell Property Owner, LLC 2024. 

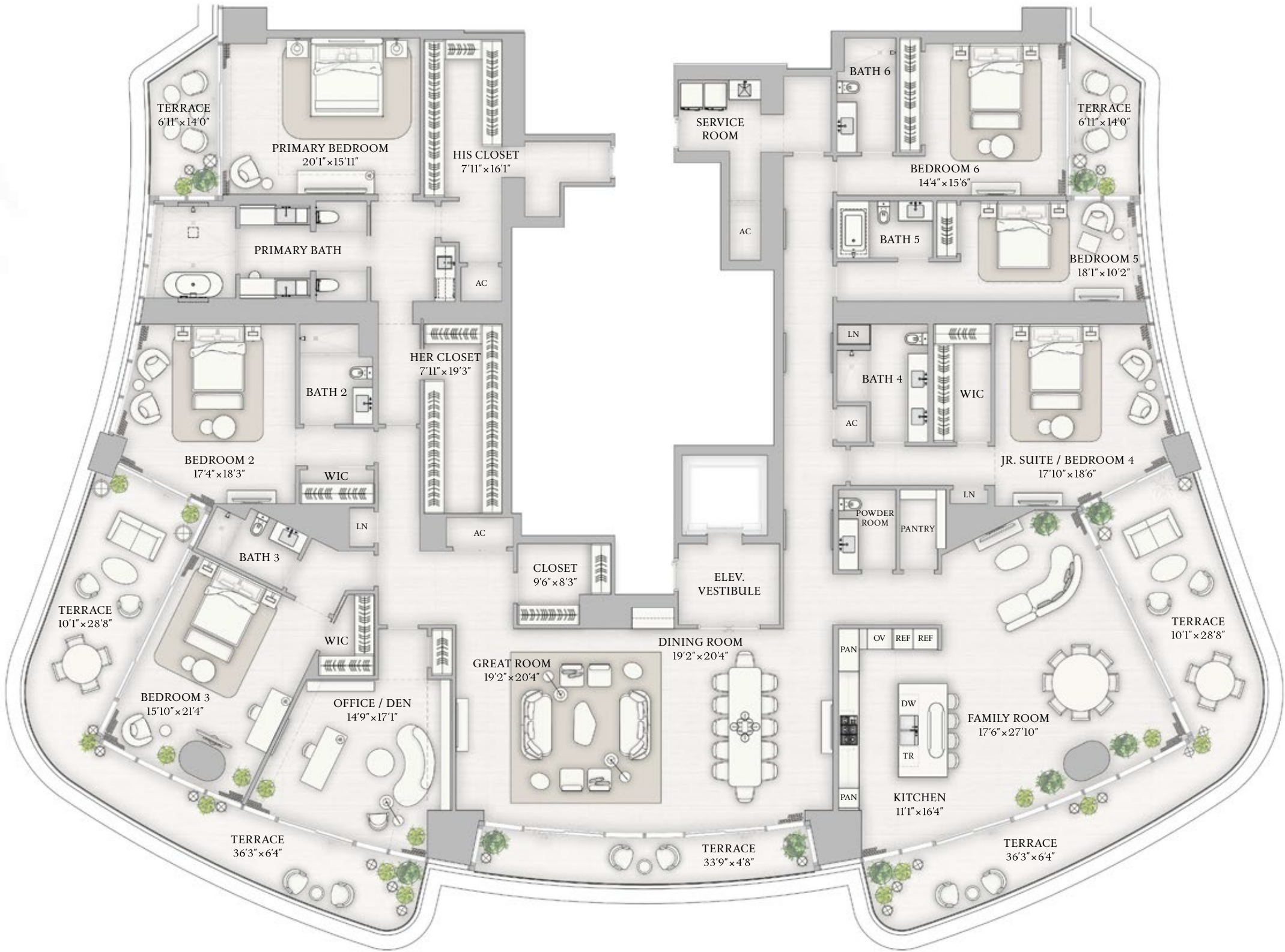
6 BEDROOMS | 6 BATHROOMS | POWDER ROOM
INTERIOR: 6,835 SF | 635 SQM EXTERIOR: 1,335 SF | 124 SQM SQM



PENTHOUSE
MPH C
FLOOR 47

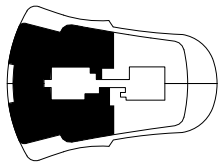
INTERIOR
6,835 SF | 635 SQM
EXTERIOR
1,335 SF | 124 SQM

- 6 BEDROOMS
- 6 BATHROOMS
- POWDER ROOM
- OFFICE
- EAT-IN KITCHEN AND FAMILY ROOM



The dimensions stated for this Unit floor plan are approximate because there are various recognized methods for calculating the square footage of a Unit. The square footage stated here is calculated from the exterior boundaries of the exterior walls to the centerline of interior demising walls without deductions for cutouts, curves, or architectural features. This method typically results in quoted dimensions greater than the dimensions that would be determined by using other accepted methods. The definition of "Unit" and the calculation method to be relied upon is set forth in Developer's prospectus and the method set forth in the Developer's prospectus may result in a square footage calculation less than the method used here. Dimensions and Unit configuration may change during construction. The furniture illustrated is not included with purchase; the floorplan layout is not a guarantee on your use of space but is one example of uses of space. Consult the Developer's prospectus to understand the calculation of the Unit square footage and dimensions and what is included with purchase. Prices are not based on the square footage no matter the method of calculation of Unit dimensions and all prices are subject to change at any time.

BRICKELL AVE



BISCAYNE BAY



ST REGIS
MIAMI
THE RESIDENCES

PENTHOUSE

UPH A

FLOORS 48 – 49, LOWER LEVEL

Future residences located at:
1809 Brickell Avenue
Miami, Florida 33129



ORAL REPRESENTATIONS CANNOT BE RELIED UPON AS CORRECTLY STATING REPRESENTATIONS OF THE DEVELOPER. FOR CORRECT REPRESENTATIONS, MAKE REFERENCE TO THIS BROCHURE AND TO THE DOCUMENTS REQUIRED BY SECTION 718.503, FLORIDA STATUTES, TO BE FURNISHED BY A DEVELOPER TO A BUYER OR LESSEE.

The St. Regis Residences, Miami are developed by 1809 Brickell Property Owner, LLC (“Developer”). The St. Regis Residences, Miami are not owned, developed, or sold by Marriott International, Inc. or its affiliates (“Marriott”). The Developer uses the St. Regis marks under a license from Marriott, which has not confirmed the accuracy of any of the statements or representations made about the project by Developer. Sketches, renderings, or photographs depicting a floor plan are proposed only and the Developer reserves the right to modify, revise, or withdraw any or all of the same in Developer’s sole discretion without prior notice. Locations and layouts of windows, doors, closets, plumbing fixtures, and structural and architectural design elements may vary from concept to actual construction. All depictions of appliances, plumbing fixtures, counters, countertops, cabinets, soffits, floor coverings, and other matters of design and décor detail or floor plans are conceptual and such drawings shown should not be relied upon as representations, express or implied, of the final detail of The St. Regis Residences, Miami or any Unit. There is no guarantee that any proposed hotel brands will be involved as depicted or at all upon, or following, the completion of The St. Regis Residences, Miami. Consult the prospectus of the Developer to understand this offering, the amenities, the proposed budgets, terms, conditions, specifications, fees, Unit dimensions, site plans, and to learn what is included with purchase and by payment of regular assessments. All prices are subject to change at any time and without notice and do not include optional features, design packages, furniture packages, or premiums for upgrades to any Unit. © 1809 Brickell Property Owner, LLC 2024. 

5 BEDROOMS | 7 BATHROOMS | 2 POWDER ROOMS
INTERIOR: 4,735 SF | 440 SQM EXTERIOR: 1,845 SF | 172 SQM

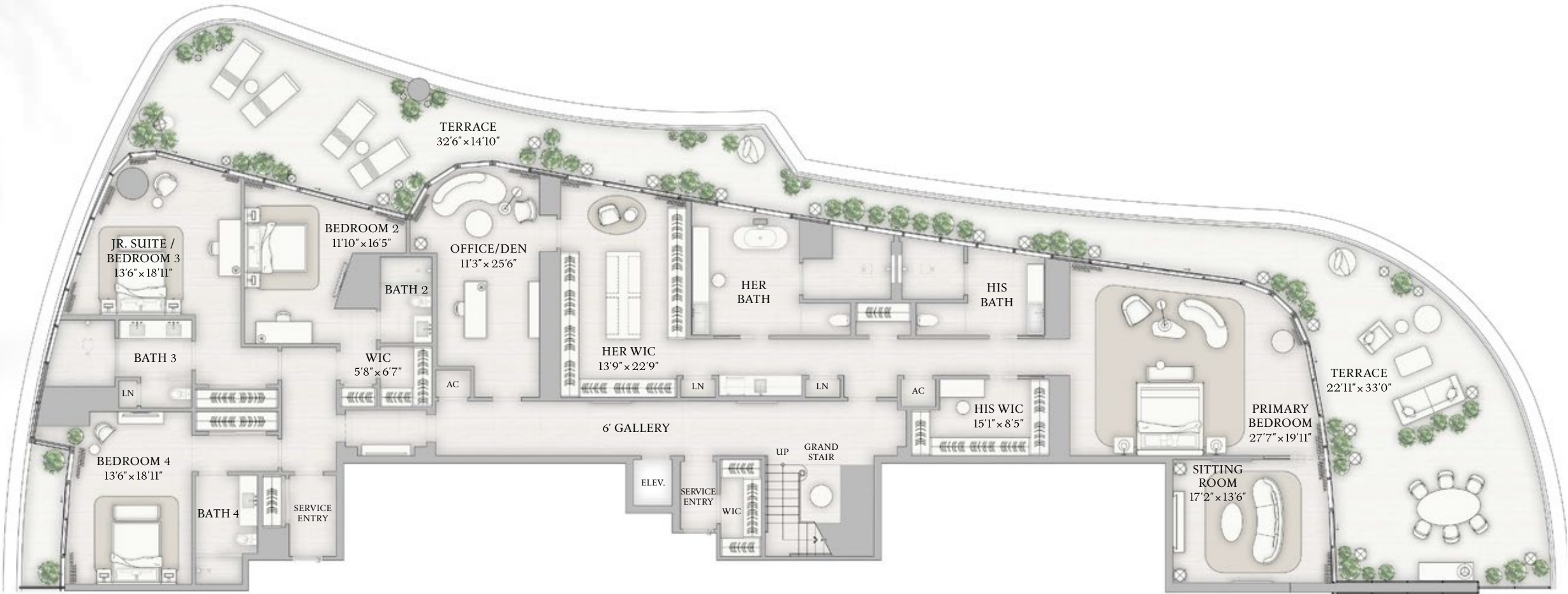


PENTHOUSE
UPH A
FLOORS 48-49, LOWER LEVEL

LOWER LEVEL INTERIOR
4,735 SF | 440 SQM
LOWER LEVEL EXTERIOR
1,845 SF | 172 SQM

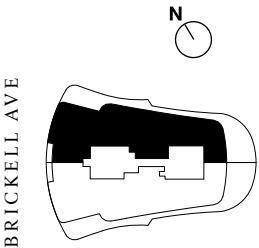
TOTAL INTERIOR
10,003 SF | 930 SQM
TOTAL EXTERIOR
5,465 SF | 509 SQM

- 5 BEDROOMS
- 7 BATHROOMS
- 2 POWDER ROOMS
- PRIVATE SUNDECK
- PRIVATE POOL & SPA
- SUMMER KITCHEN
- WINDOWED SERVICE SUITE
- INTERNAL ELEVATOR



BISCAYNE BAY

The dimensions stated for this Unit floor plan are approximate because there are various recognized methods for calculating the square footage of a Unit. The square footage stated here is calculated from the exterior boundaries of the exterior walls to the centerline of interior demising walls without deductions for cutouts, curves, or architectural features. This method typically results in quoted dimensions greater than the dimensions that would be determined by using other accepted methods. The definition of "Unit" and the calculation method to be relied upon is set forth in Developer's prospectus and the method set forth in the Developer's prospectus may result in a square footage calculation less than the method used here. Dimensions and Unit configuration may change during construction. The furniture illustrated is not included with purchase; the floorplan layout is not a guarantee on your use of space but is one example of uses of space. Consult the Developer's prospectus to understand the calculation of the Unit square footage and dimensions and what is included with purchase. Prices are not based on the square footage no matter the method of calculation of Unit dimensions and all prices are subject to change at any time.





ST REGIS
MIAMI
THE RESIDENCES

PENTHOUSE


UPH A

FLOORS 48 – 49, UPPER LEVEL

Future residences located at:
1809 Brickell Avenue
Miami, Florida 33129



ORAL REPRESENTATIONS CANNOT BE RELIED UPON AS CORRECTLY STATING REPRESENTATIONS OF THE DEVELOPER. FOR CORRECT REPRESENTATIONS, MAKE REFERENCE TO THIS BROCHURE AND TO THE DOCUMENTS REQUIRED BY SECTION 718.503, FLORIDA STATUTES, TO BE FURNISHED BY A DEVELOPER TO A BUYER OR LESSEE.

The St. Regis Residences, Miami are developed by 1809 Brickell Property Owner, LLC (“Developer”). The St. Regis Residences, Miami are not owned, developed, or sold by Marriott International, Inc. or its affiliates (“Marriott”). The Developer uses the St. Regis marks under a license from Marriott, which has not confirmed the accuracy of any of the statements or representations made about the project by Developer. Sketches, renderings, or photographs depicting a floor plan are proposed only and the Developer reserves the right to modify, revise, or withdraw any or all of the same in Developer’s sole discretion without prior notice. Locations and layouts of windows, doors, closets, plumbing fixtures, and structural and architectural design elements may vary from concept to actual construction. All depictions of appliances, plumbing fixtures, counters, countertops, cabinets, soffits, floor coverings, and other matters of design and décor detail or floor plans are conceptual and such drawings shown should not be relied upon as representations, express or implied, of the final detail of The St. Regis Residences, Miami or any Unit. There is no guarantee that any proposed hotel brands will be involved as depicted or at all upon, or following, the completion of The St. Regis Residences, Miami. Consult the prospectus of the Developer to understand this offering, the amenities, the proposed budgets, terms, conditions, specifications, fees, Unit dimensions, site plans, and to learn what is included with purchase and by payment of regular assessments. All prices are subject to change at any time and without notice and do not include optional features, design packages, furniture packages, or premiums for upgrades to any Unit. © 1809 Brickell Property Owner, LLC 2024. 

5 BEDROOMS | 7 BATHROOMS | 2 POWDER ROOMS
INTERIOR: 4,735 SF | 440 SQM EXTERIOR: 1,311 SF | 122 SQM



ST REGIS
MIAMI
THE RESIDENCES

PENTHOUSE

UPH A

FLOORS 48-49, UPPER LEVEL

UPPER LEVEL INTERIOR

4,735 SF | 440 SQM

UPPER LEVEL EXTERIOR

1,311 SF | 122 SQM

TOTAL INTERIOR

10,003 SF | 930 SQM

TOTAL EXTERIOR

5,465 SF | 509 SQM

5 BEDROOMS

7 BATHROOMS

2 POWDER ROOMS

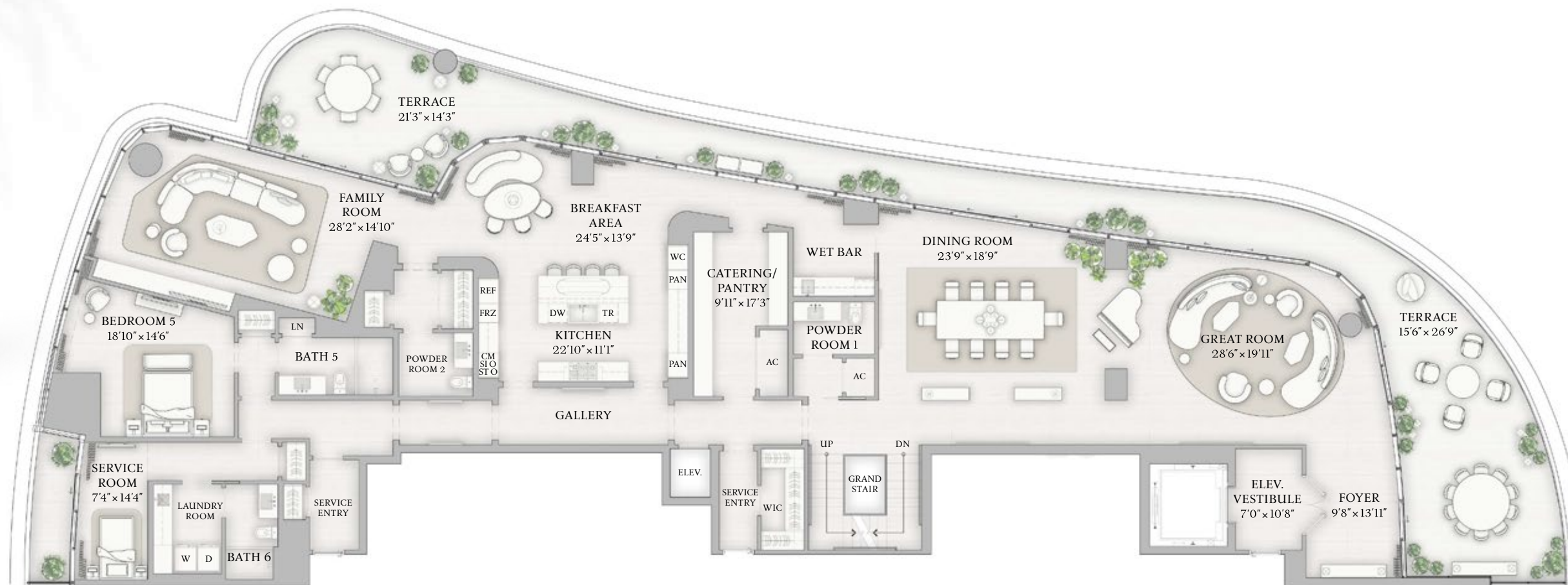
PRIVATE SUNDECK

PRIVATE POOL & SPA

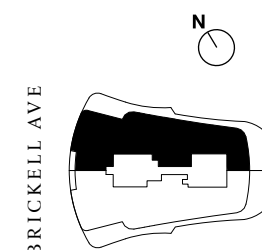
SUMMER KITCHEN

WINDOWED SERVICE SUITE

INTERNAL ELEVATOR



BISCAYNE BAY



BRICKELL AVE

The dimensions stated for this Unit floor plan are approximate because there are various recognized methods for calculating the square footage of a Unit. The square footage stated here is calculated from the exterior boundaries of the exterior walls to the centerline of interior demising walls without deductions for cutouts, curves, or architectural features. This method typically results in quoted dimensions greater than the dimensions that would be determined by using other accepted methods. The definition of "Unit" and the calculation method to be relied upon is set forth in Developer's prospectus and the method set forth in the Developer's prospectus may result in a square footage calculation less than the method used here. Dimensions and Unit configuration may change during construction. The furniture illustrated is not included with purchase; the floorplan layout is not a guarantee on your use of space but is one example of uses of space. Consult the Developer's prospectus to understand the calculation of the Unit square footage and dimensions and what is included with purchase. Prices are not based on the square footage no matter the method of calculation of Unit dimensions and all prices are subject to change at any time.



ST REGIS
MIAMI
THE RESIDENCES

PENTHOUSE


UPH A

ROOF TERRACE

Future residences located at:
1809 Brickell Avenue
Miami, Florida 33129



ORAL REPRESENTATIONS CANNOT BE RELIED UPON AS CORRECTLY STATING REPRESENTATIONS OF THE DEVELOPER. FOR CORRECT REPRESENTATIONS, MAKE REFERENCE TO THIS BROCHURE AND TO THE DOCUMENTS REQUIRED BY SECTION 718.503, FLORIDA STATUTES, TO BE FURNISHED BY A DEVELOPER TO A BUYER OR LESSEE.

The St. Regis Residences, Miami are developed by 1809 Brickell Property Owner, LLC ("Developer"). The St. Regis Residences, Miami are not owned, developed, or sold by Marriott International, Inc. or its affiliates ("Marriott"). The Developer uses the St. Regis marks under a license from Marriott, which has not confirmed the accuracy of any of the statements or representations made about the project by Developer. Sketches, renderings, or photographs depicting a floor plan are proposed only and the Developer reserves the right to modify, revise, or withdraw any or all of the same in Developer's sole discretion without prior notice. Locations and layouts of windows, doors, closets, plumbing fixtures, and structural and architectural design elements may vary from concept to actual construction. All depictions of appliances, plumbing fixtures, counters, countertops, cabinets, soffits, floor coverings, and other matters of design and décor detail or floor plans are conceptual and such drawings shown should not be relied upon as representations, express or implied, of the final detail of The St. Regis Residences, Miami or any Unit. There is no guarantee that any proposed hotel brands will be involved as depicted or at all upon, or following, the completion of The St. Regis Residences, Miami. Consult the prospectus of the Developer to understand this offering, the amenities, the proposed budgets, terms, conditions, specifications, fees, Unit dimensions, site plans, and to learn what is included with purchase and by payment of regular assessments. All prices are subject to change at any time and without notice and do not include optional features, design packages, furniture packages, or premiums for upgrades to any Unit. © 1809 Brickell Property Owner, LLC 2024. 

5 BEDROOMS | 7 BATHROOMS | 2 POWDER ROOMS
INTERIOR: 533 SF | 50 SQM EXTERIOR: 2,309 SF | 215 SQM

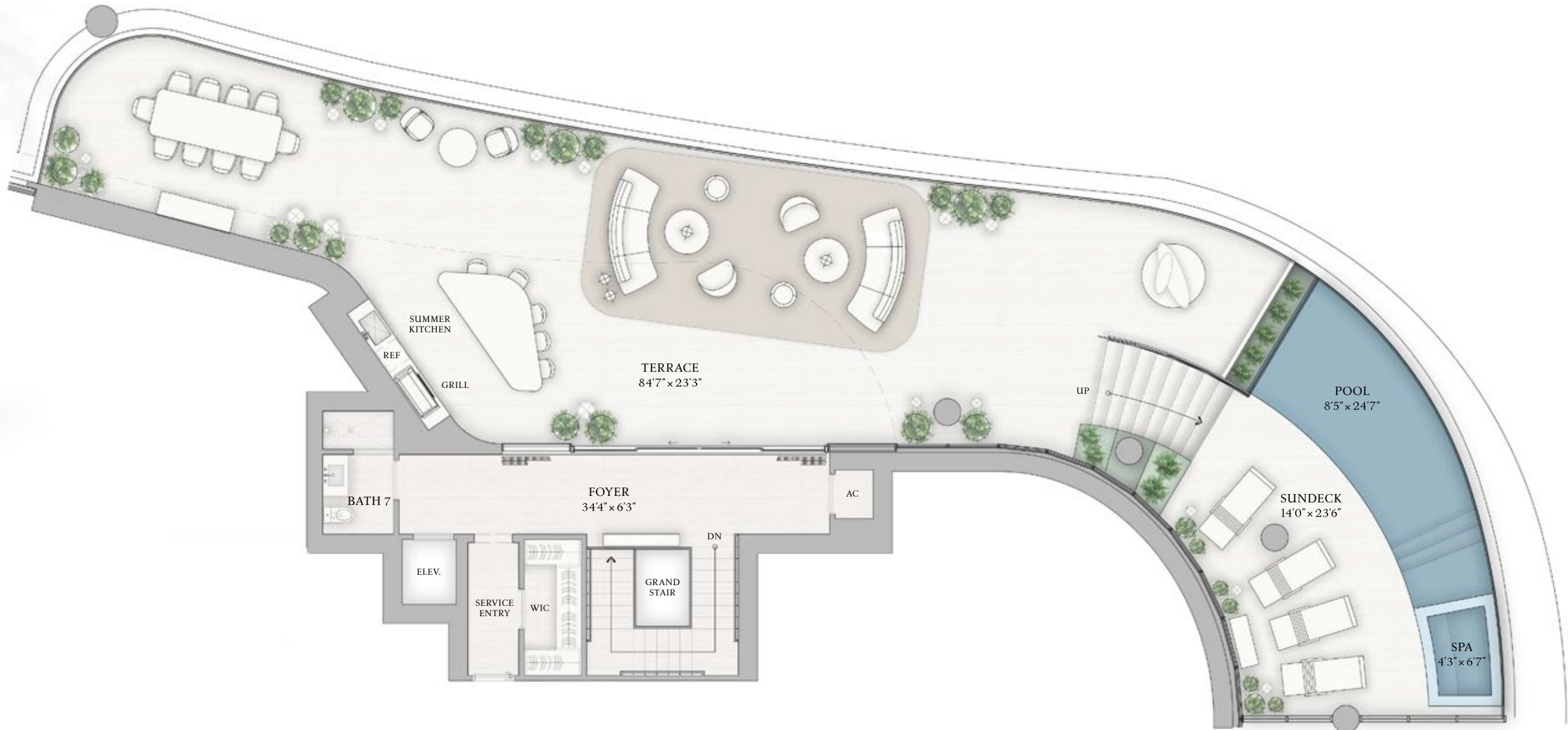


PENTHOUSE
UPH A
ROOF TERRACE

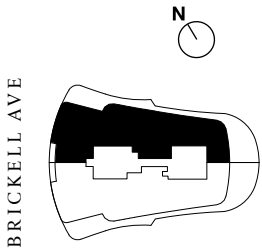
ROOF TERRACE INTERIOR
533 SF | 50 SQM
ROOF TERRACE EXTERIOR
2,309 SF | 215 SQM

TOTAL INTERIOR
10,003 SF | 930 SQM
TOTAL EXTERIOR
5,465 SF | 509 SQM

- 5 BEDROOMS
- 7 BATHROOMS
- 2 POWDER ROOMS
- PRIVATE SUNDECK
- PRIVATE POOL & SPA
- SUMMER KITCHEN
- WINDOWED SERVICE SUITE
- INTERNAL ELEVATOR



The dimensions stated for this Unit floor plan are approximate because there are various recognized methods for calculating the square footage of a Unit. The square footage stated here is calculated from the exterior boundaries of the exterior walls to the centerline of interior demising walls without deductions for cutouts, curves, or architectural features. This method typically results in quoted dimensions greater than the dimensions that would be determined by using other accepted methods. The definition of "Unit" and the calculation method to be relied upon is set forth in Developer's prospectus and the method set forth in the Developer's prospectus may result in a square footage calculation less than the method used here. Dimensions and Unit configuration may change during construction. The furniture illustrated is not included with purchase; the floorplan layout is not a guarantee on your use of space but is one example of uses of space. Consult the Developer's prospectus to understand the calculation of the Unit square footage and dimensions and what is included with purchase. Prices are not based on the square footage no matter the method of calculation of Unit dimensions and all prices are subject to change at any time.





ST REGIS
MIAMI
THE RESIDENCES

PENTHOUSE

UPH B

FLOORS 48 – 49, LOWER LEVEL

Future residences located at:
1809 Brickell Avenue
Miami, Florida 33129



ORAL REPRESENTATIONS CANNOT BE RELIED UPON AS CORRECTLY STATING REPRESENTATIONS OF THE DEVELOPER. FOR CORRECT REPRESENTATIONS, MAKE REFERENCE TO THIS BROCHURE AND TO THE DOCUMENTS REQUIRED BY SECTION 718.503, FLORIDA STATUTES, TO BE FURNISHED BY A DEVELOPER TO A BUYER OR LESSEE.

The St. Regis Residences, Miami are developed by 1809 Brickell Property Owner, LLC (“Developer”). The St. Regis Residences, Miami are not owned, developed, or sold by Marriott International, Inc. or its affiliates (“Marriott”). The Developer uses the St. Regis marks under a license from Marriott, which has not confirmed the accuracy of any of the statements or representations made about the project by Developer. Sketches, renderings, or photographs depicting a floor plan are proposed only and the Developer reserves the right to modify, revise, or withdraw any or all of the same in Developer’s sole discretion without prior notice. Locations and layouts of windows, doors, closets, plumbing fixtures, and structural and architectural design elements may vary from concept to actual construction. All depictions of appliances, plumbing fixtures, counters, countertops, cabinets, soffits, floor coverings, and other matters of design and décor detail or floor plans are conceptual and such drawings shown should not be relied upon as representations, express or implied, of the final detail of The St. Regis Residences, Miami or any Unit. There is no guarantee that any proposed hotel brands will be involved as depicted or at all upon, or following, the completion of The St. Regis Residences, Miami. Consult the prospectus of the Developer to understand this offering, the amenities, the proposed budgets, terms, conditions, specifications, fees, Unit dimensions, site plans, and to learn what is included with purchase and by payment of regular assessments. All prices are subject to change at any time and without notice and do not include optional features, design packages, furniture packages, or premiums for upgrades to any Unit. © 1809 Brickell Property Owner, LLC 2024. 

5 BEDROOMS | 7 BATHROOMS | 2 POWDER ROOMS
INTERIOR: 4,744 SF | 441 SQM EXTERIOR: 1,845 SF | 172 SQM



PENTHOUSE
UPH B
FLOORS 48-49, LOWER LEVEL

LOWER LEVEL INTERIOR
4,744 SF | 441 SQM
LOWER LEVEL EXTERIOR
1,845 SF | 172 SQM

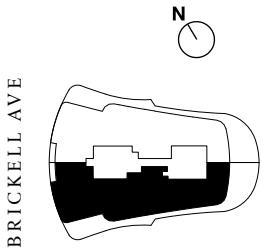
TOTAL INTERIOR
9,968 SF | 927 SQM
TOTAL EXTERIOR
5,546 SF | 517 SQM

- 5 BEDROOMS
- 7 BATHROOMS
- 2 POWDER ROOMS
- PRIVATE SUNDECK
- PRIVATE POOL & SPA
- SUMMER KITCHEN
- WINDOWED SERVICE SUITE
- INTERNAL ELEVATOR



BISCAYNE BAY

The dimensions stated for this Unit floor plan are approximate because there are various recognized methods for calculating the square footage of a Unit. The square footage stated here is calculated from the exterior boundaries of the exterior walls to the centerline of interior demising walls without deductions for cutouts, curves, or architectural features. This method typically results in quoted dimensions greater than the dimensions that would be determined by using other accepted methods. The definition of "Unit" and the calculation method to be relied upon is set forth in Developer's prospectus and the method set forth in the Developer's prospectus may result in a square footage calculation less than the method used here. Dimensions and Unit configuration may change during construction. The furniture illustrated is not included with purchase; the floorplan layout is not a guarantee on your use of space but is one example of uses of space. Consult the Developer's prospectus to understand the calculation of the Unit square footage and dimensions and what is included with purchase. Prices are not based on the square footage no matter the method of calculation of Unit dimensions and all prices are subject to change at any time.





ST REGIS
MIAMI
THE RESIDENCES

PENTHOUSE

UPH B

FLOORS 48 – 49, UPPER LEVEL

Future residences located at:
1809 Brickell Avenue
Miami, Florida 33129



ORAL REPRESENTATIONS CANNOT BE RELIED UPON AS CORRECTLY STATING REPRESENTATIONS OF THE DEVELOPER. FOR CORRECT REPRESENTATIONS, MAKE REFERENCE TO THIS BROCHURE AND TO THE DOCUMENTS REQUIRED BY SECTION 718.503, FLORIDA STATUTES, TO BE FURNISHED BY A DEVELOPER TO A BUYER OR LESSEE.

The St. Regis Residences, Miami are developed by 1809 Brickell Property Owner, LLC (“Developer”). The St. Regis Residences, Miami are not owned, developed, or sold by Marriott International, Inc. or its affiliates (“Marriott”). The Developer uses the St. Regis marks under a license from Marriott, which has not confirmed the accuracy of any of the statements or representations made about the project by Developer. Sketches, renderings, or photographs depicting a floor plan are proposed only and the Developer reserves the right to modify, revise, or withdraw any or all of the same in Developer’s sole discretion without prior notice. Locations and layouts of windows, doors, closets, plumbing fixtures, and structural and architectural design elements may vary from concept to actual construction. All depictions of appliances, plumbing fixtures, counters, countertops, cabinets, soffits, floor coverings, and other matters of design and décor detail or floor plans are conceptual and such drawings shown should not be relied upon as representations, express or implied, of the final detail of The St. Regis Residences, Miami or any Unit. There is no guarantee that any proposed hotel brands will be involved as depicted or at all upon, or following, the completion of The St. Regis Residences, Miami. Consult the prospectus of the Developer to understand this offering, the amenities, the proposed budgets, terms, conditions, specifications, fees, Unit dimensions, site plans, and to learn what is included with purchase and by payment of regular assessments. All prices are subject to change at any time and without notice and do not include optional features, design packages, furniture packages, or premiums for upgrades to any Unit. © 1809 Brickell Property Owner, LLC 2024.

5 BEDROOMS | 7 BATHROOMS | 2 POWDER ROOMS
INTERIOR: 4,744 SF | 441 SQM EXTERIOR: 1,311 SF | 122 SQM



PENTHOUSE
UPH B
FLOORS 48–49, UPPER LEVEL

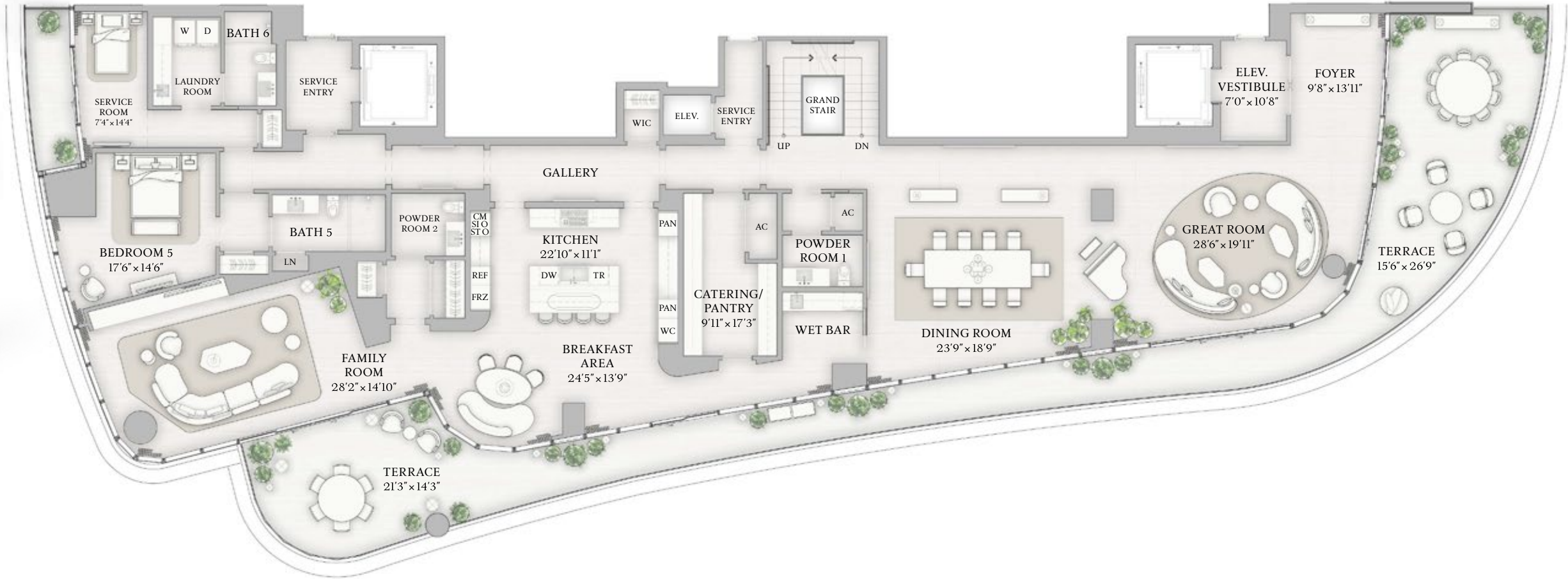
UPPER LEVEL INTERIOR
4,744 SF | 441 SQM

UPPER LEVEL EXTERIOR
1,311 SF | 122 SQM

TOTAL INTERIOR
9,968 SF | 927 SQM

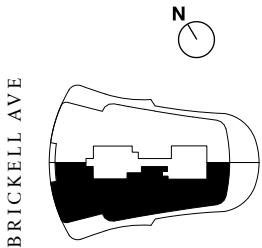
TOTAL EXTERIOR
5,546 SF | 517 SQM

- 5 BEDROOMS
- 7 BATHROOMS
- 2 POWDER ROOMS
- PRIVATE SUNDECK
- PRIVATE POOL & SPA
- SUMMER KITCHEN
- WINDOWED SERVICE SUITE
- INTERNAL ELEVATOR



BISCAYNE BAY

The dimensions stated for this Unit floor plan are approximate because there are various recognized methods for calculating the square footage of a Unit. The square footage stated here is calculated from the exterior boundaries of the exterior walls to the centerline of interior demising walls without deductions for cutouts, curves, or architectural features. This method typically results in quoted dimensions greater than the dimensions that would be determined by using other accepted methods. The definition of "Unit" and the calculation method to be relied upon is set forth in Developer's prospectus and the method set forth in the Developer's prospectus may result in a square footage calculation less than the method used here. Dimensions and Unit configuration may change during construction. The furniture illustrated is not included with purchase; the floorplan layout is not a guarantee on your use of space but is one example of uses of space. Consult the Developer's prospectus to understand the calculation of the Unit square footage and dimensions and what is included with purchase. Prices are not based on the square footage no matter the method of calculation of Unit dimensions and all prices are subject to change at any time.





ST REGIS
MIAMI
THE RESIDENCES

PENTHOUSE

UPH B

ROOF TERRACE

Future residences located at:
1809 Brickell Avenue
Miami, Florida 33129



ORAL REPRESENTATIONS CANNOT BE RELIED UPON AS CORRECTLY STATING REPRESENTATIONS OF THE DEVELOPER. FOR CORRECT REPRESENTATIONS, MAKE REFERENCE TO THIS BROCHURE AND TO THE DOCUMENTS REQUIRED BY SECTION 718.503, FLORIDA STATUTES, TO BE FURNISHED BY A DEVELOPER TO A BUYER OR LESSEE.

The St. Regis Residences, Miami are developed by 1809 Brickell Property Owner, LLC ("Developer"). The St. Regis Residences, Miami are not owned, developed, or sold by Marriott International, Inc. or its affiliates ("Marriott"). The Developer uses the St. Regis marks under a license from Marriott, which has not confirmed the accuracy of any of the statements or representations made about the project by Developer. Sketches, renderings, or photographs depicting a floor plan are proposed only and the Developer reserves the right to modify, revise, or withdraw any or all of the same in Developer's sole discretion without prior notice. Locations and layouts of windows, doors, closets, plumbing fixtures, and structural and architectural design elements may vary from concept to actual construction. All depictions of appliances, plumbing fixtures, counters, countertops, cabinets, soffits, floor coverings, and other matters of design and décor detail or floor plans are conceptual and such drawings shown should not be relied upon as representations, express or implied, of the final detail of The St. Regis Residences, Miami or any Unit. There is no guarantee that any proposed hotel brands will be involved as depicted or at all upon, or following, the completion of The St. Regis Residences, Miami. Consult the prospectus of the Developer to understand this offering, the amenities, the proposed budgets, terms, conditions, specifications, fees, Unit dimensions, site plans, and to learn what is included with purchase and by payment of regular assessments. All prices are subject to change at any time and without notice and do not include optional features, design packages, furniture packages, or premiums for upgrades to any Unit. © 1809 Brickell Property Owner, LLC 2024.

5 BEDROOMS | 7 BATHROOMS | 2 POWDER ROOMS
INTERIOR: 480 SF | 45 SQM EXTERIOR: 2,390 SF | 223 SQM

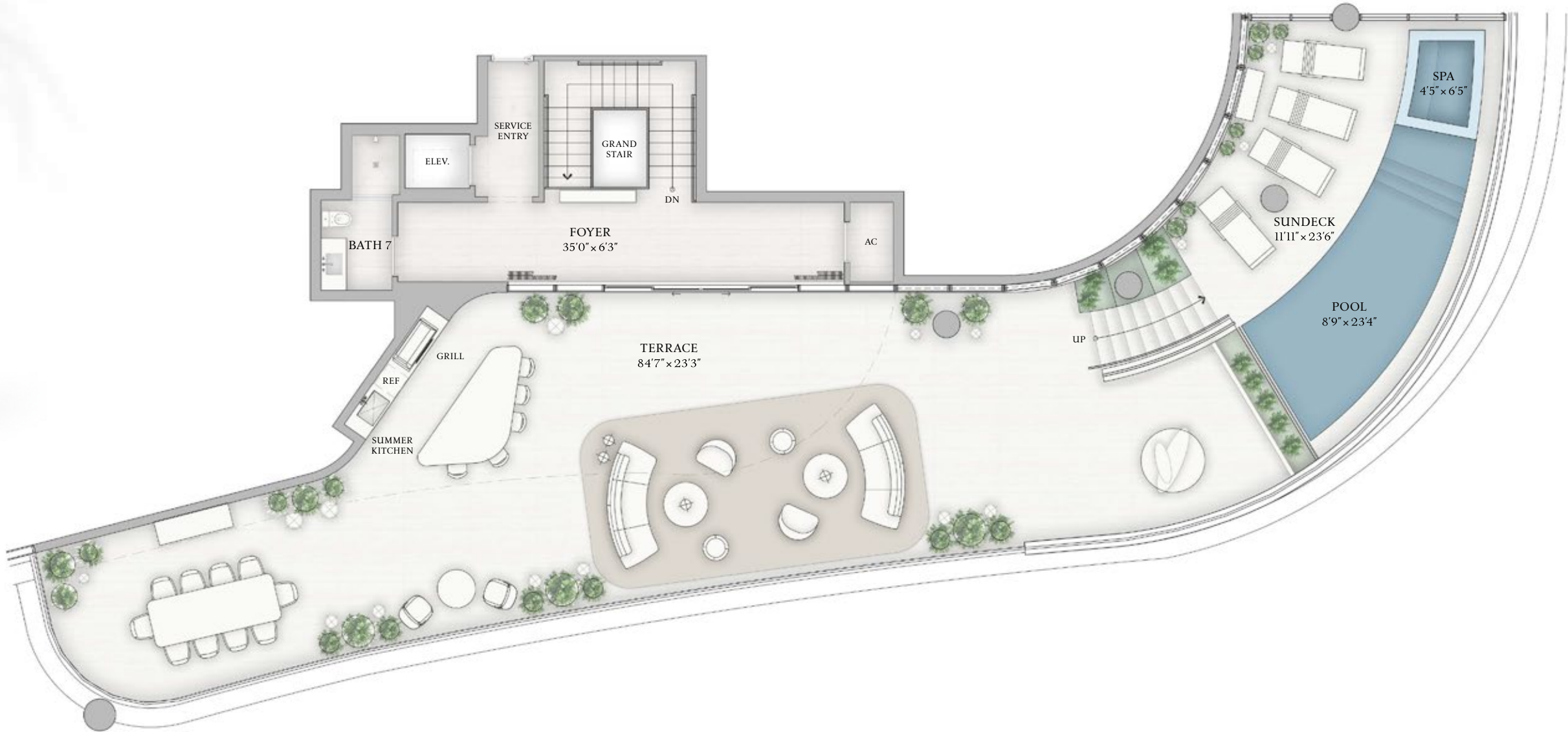


PENTHOUSE
UPH B
ROOF TERRACE

ROOF TERRACE INTERIOR
480 SF | 45 SQM
ROOF TERRACE EXTERIOR
2,390 SF | 223 SQM

TOTAL INTERIOR
9,968 SF | 927 SQM
TOTAL EXTERIOR
5,546 SF | 517 SQM

- 5 BEDROOMS
- 7 BATHROOMS
- 2 POWDER ROOMS
- PRIVATE SUNDECK
- PRIVATE POOL & SPA
- SUMMER KITCHEN
- WINDOWED SERVICE SUITE
- INTERNAL ELEVATOR



The dimensions stated for this Unit floor plan are approximate because there are various recognized methods for calculating the square footage of a Unit. The square footage stated here is calculated from the exterior boundaries of the exterior walls to the centerline of interior demising walls without deductions for cutouts, curves, or architectural features. This method typically results in quoted dimensions greater than the dimensions that would be determined by using other accepted methods. The definition of "Unit" and the calculation method to be relied upon is set forth in Developer's prospectus and the method set forth in the Developer's prospectus may result in a square footage calculation less than the method used here. Dimensions and Unit configuration may change during construction. The furniture illustrated is not included with purchase; the floorplan layout is not a guarantee on your use of space but is one example of uses of space. Consult the Developer's prospectus to understand the calculation of the Unit square footage and dimensions and what is included with purchase. Prices are not based on the square footage no matter the method of calculation of Unit dimensions and all prices are subject to change at any time.

