

RESIDENCES
pier SIXTY-SIX

CONDO
RESIDENCES

A

3 BEDROOMS
3.5 BATHROOMS

Interior
2,878 SQFT
267.4 SM

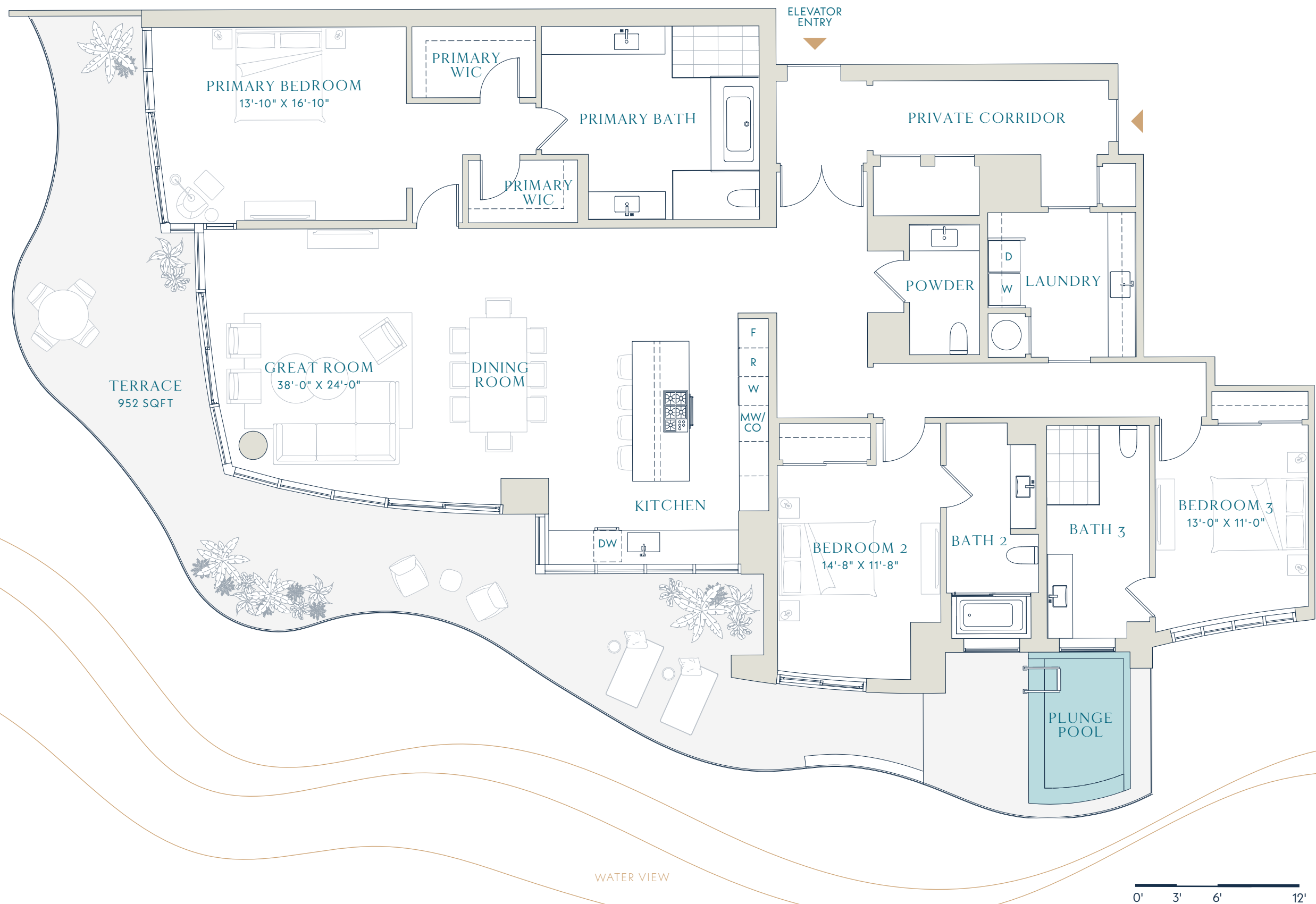
Terrace
952 SQFT
88.4 SM

Total
3,830 SQFT
355.8 SM



CONDO RESIDENCES

pier SIXTY-SIX
PierSixtySixResidences.com



Stated dimensions are measured to the exterior boundaries of the exterior walls and the centerline of interior demising walls (without deductions for interior columns, shear walls or shafts) and in fact vary from the dimensions that would be determined by using the description and definition of the "Unit" set forth in the Declaration (which generally only includes the interior airspace between the perimeter walls and excludes interior structural components, shear walls and shafts). For the calculation of the unit area following the definition of the unit set forth in the Declaration, see Exhibit "3" of the Declaration. Additionally, measurements of rooms set forth on any floor plan are generally taken at the greatest points of each given room (as if the room were a perfect rectangle), without regard for any cutouts. Accordingly, the area of the actual room will typically be smaller than the product obtained by multiplying the stated length times width. All dimensions are approximate, and all floor plans and development plans are subject to change. Brand and Marketing by Williams New York.

RESIDENCES
pier SIXTY-SIX

CONDO
RESIDENCES

B

3 BEDROOMS
3.5 BATHROOMS

Interior
2,878 SQFT
267.4 SM

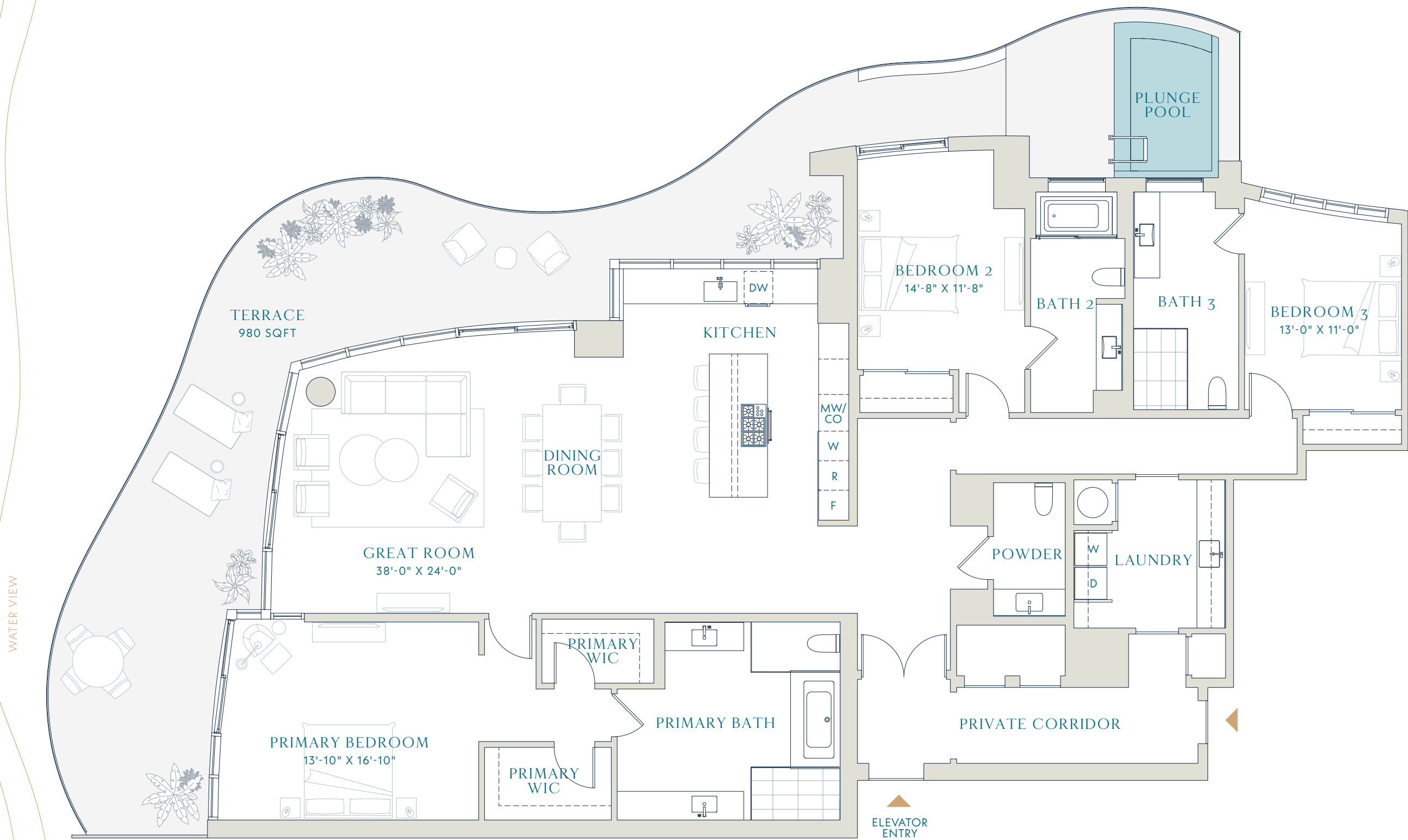
Terrace
980 SQFT
91 SM

Total
3,858 SQFT
358.4 SM



CONDO RESIDENCES

pier SIXTY-SIX
PierSixtySixResidences.com



Stated dimensions are measured to the exterior boundaries of the exterior walls and the centerline of interior demising walls (without deductions for interior columns, shear walls or shafts) and in fact vary from the dimensions that would be determined by using the description and definition of the "Unit" set forth in the Declaration (which generally only includes the interior airspace between the perimeter walls and excludes interior structural components, shear walls and shafts). For the calculation of the unit area following the definition of the unit set forth in the Declaration, see Exhibit "3" of the Declaration. Additionally, measurements of rooms set forth on any floor plan are generally taken at the greatest points of each given room (as if the room were a perfect rectangle), without regard for any cutouts. Accordingly, the area of the actual room will typically be smaller than the product obtained by multiplying the stated length times width. All dimensions are approximate, and all floor plans and development plans are subject to change. Brand and Marketing by Williams New York.

RESIDENCES
pier SIXTY-SIX

CONDO
RESIDENCES

C

3 BEDROOMS
3.5 BATHROOMS

Interior
2,718 SQFT
252.5 SM

Terrace
917 SQFT
85.2 SM

Total
3,635 SQFT
337.7 SM



CONDO RESIDENCES

pier SIXTY-SIX
PierSixtySixResidences.com



Stated dimensions are measured to the exterior boundaries of the exterior walls and the centerline of interior demising walls (without deductions for interior columns, shear walls or shafts) and in fact vary from the dimensions that would be determined by using the description and definition of the "Unit" set forth in the Declaration (which generally only includes the interior airspace between the perimeter walls and excludes interior structural components, shear walls and shafts). For the calculation of the unit area following the definition of the unit set forth in the Declaration, see Exhibit "3" of the Declaration. Additionally, measurements of rooms set forth on any floor plan are generally taken at the greatest points of each given room (as if the room were a perfect rectangle), without regard for any cutouts. Accordingly, the area of the actual room will typically be smaller than the product obtained by multiplying the stated length times width. All dimensions are approximate, and all floor plans and development plans are subject to change. Brand and Marketing by Williams New York.

RESIDENCES
pier SIXTY-SIX

CONDO
RESIDENCES
D

3 BEDROOMS
3.5 BATHROOMS

Interior
2,718 SQFT
252.5 SM

Terrace
862 SQFT
80.1 SM

Total
3,580 SQFT
332.6 SM



CONDO RESIDENCES

pier SIXTY-SIX
PierSixtySixResidences.com

WATER VIEW



0' 3' 6' 12'

Stated dimensions are measured to the exterior boundaries of the exterior walls and the centerline of interior demising walls (without deductions for interior columns, shear walls or shafts) and in fact vary from the dimensions that would be determined by using the description and definition of the "Unit" set forth in the Declaration (which generally only includes the interior airspace between the perimeter walls and excludes interior structural components, shear walls and shafts). For the calculation of the unit area following the definition of the unit set forth in the Declaration, see Exhibit "3" of the Declaration. Additionally, measurements of rooms set forth on any floor plan are generally taken at the greatest points of each given room (as if the room were a perfect rectangle), without regard for any cutouts. Accordingly, the area of the actual room will typically be smaller than the product obtained by multiplying the stated length times width. All dimensions are approximate, and all floor plans and development plans are subject to change. Brand and Marketing by Williams New York.

RESIDENCES
pier SIXTY-SIX

RESORT
RESIDENCES

C

3 BEDROOMS
3 BATHROOMS

Interior
1,645 SQFT
152.8 SM

Terrace
86 SQFT
8.0 SM

Total
1,731 SQFT
160.8 SM



RESORT RESIDENCE 1

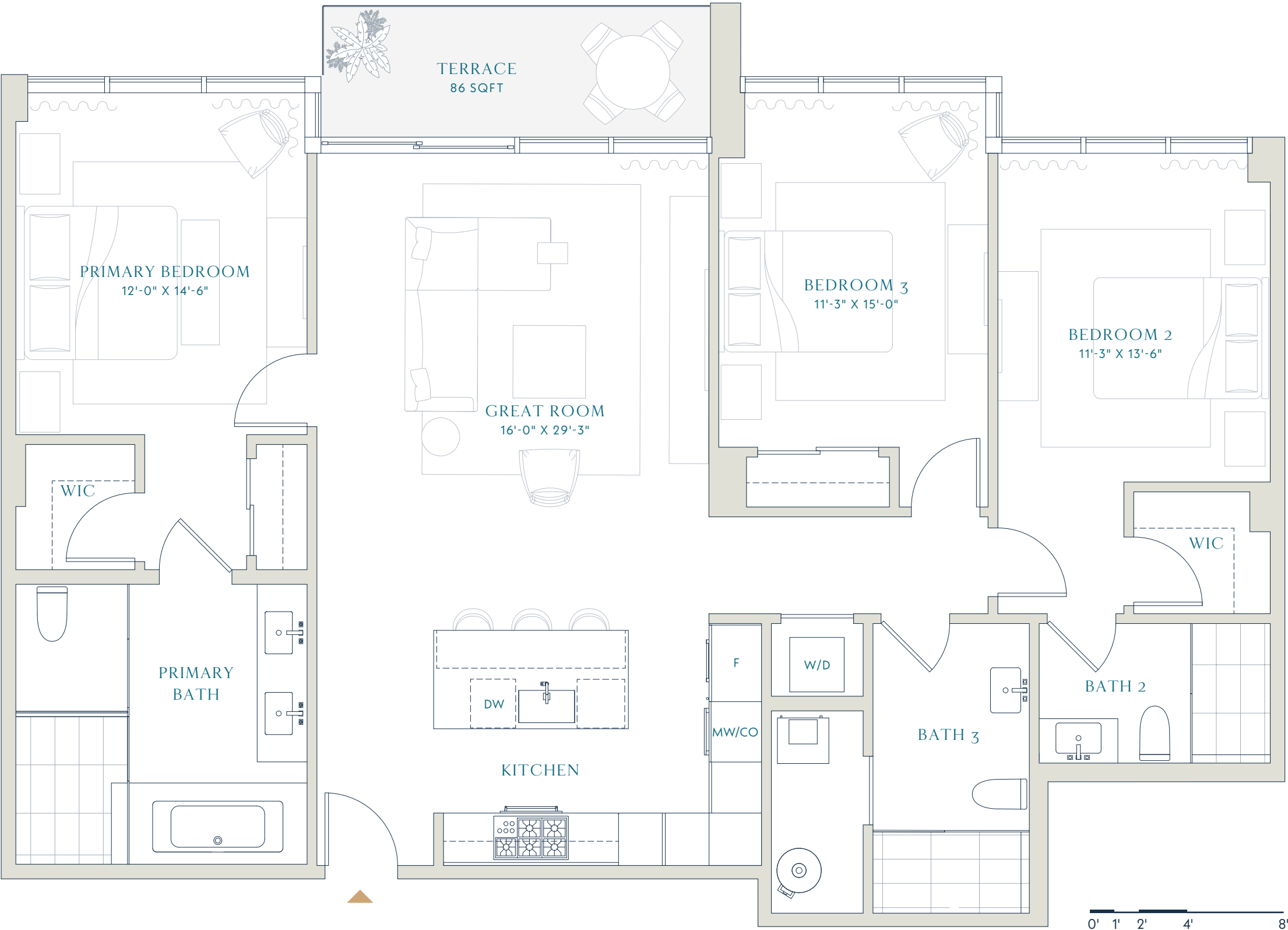


RESORT RESIDENCE 2

pier SIXTY-SIX

PierSixtySixResidences.com

WATER VIEW



Stated dimensions are measured to the exterior boundaries of the exterior walls and the centerline of interior demising walls (without deductions for interior columns, shear walls or shafts) and in fact vary from the dimensions that would be determined by using the description and definition of the "Unit" set forth in the Declaration (which generally only includes the interior airspace between the perimeter walls and excludes interior structural components, shear walls and shafts). For the calculation of the unit area following the definition of the unit set forth in the Declaration, see Exhibit "3" of the Declaration. Additionally, measurements of rooms set forth on any floor plan are generally taken at the greatest points of each given room (as if the room were a perfect rectangle), without regard for any cutouts. Accordingly, the area of the actual room will typically be smaller than the product obtained by multiplying the stated length times width. All dimensions are approximate, and all floor plans and development plans are subject to change. Brand and Marketing by Williams New York.

RESIDENCES
pier SIXTY-SIX

RESORT
RESIDENCES

D

2 BEDROOMS
FAMILY ROOM
3 BATHROOMS

Interior

1,738 SQFT
161.5 SM

Terrace

320 SQFT
29.7 SM

Total

2,238 SQFT
207.9 SM



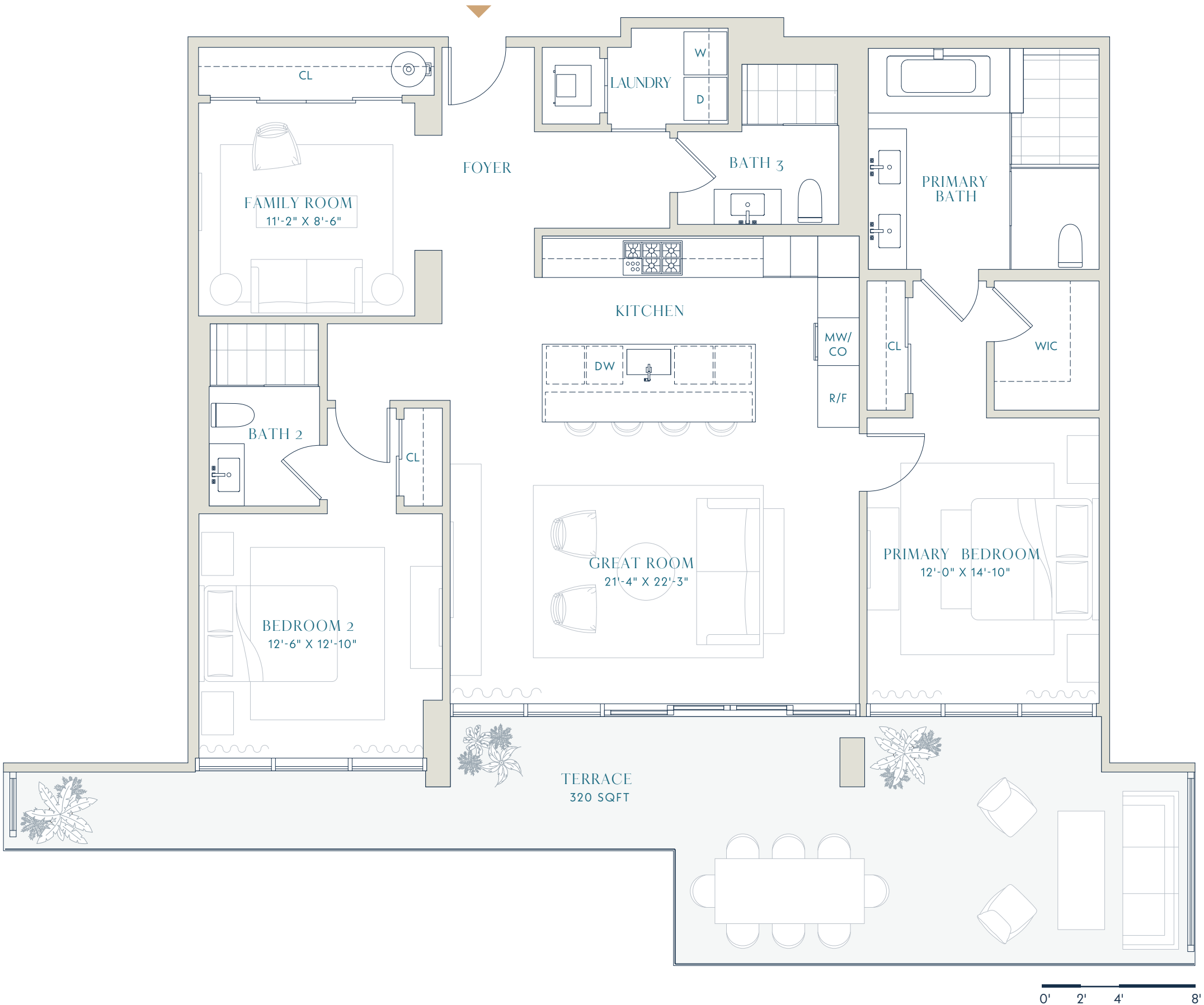
RESORT RESIDENCE 1



RESORT RESIDENCE 2

pier SIXTY-SIX

PierSixtySixResidences.com



Stated dimensions are measured to the exterior boundaries of the exterior walls and the centerline of interior demising walls (without deductions for interior columns, shear walls or shafts) and in fact vary from the dimensions that would be determined by using the description and definition of the "Unit" set forth in the Declaration (which generally only includes the interior airspace between the perimeter walls and excludes interior structural components, shear walls and shafts). For the calculation of the unit area following the definition of the unit set forth in the Declaration, see Exhibit "3" of the Declaration. Additionally, measurements of rooms set forth on any floor plan are generally taken at the greatest points of each given room (as if the room were a perfect rectangle), without regard for any cutouts. Accordingly, the area of the actual room will typically be smaller than the product obtained by multiplying the stated length times width. All dimensions are approximate, and all floor plans and development plans are subject to change. Brand and Marketing by Williams New York.

RESIDENCES
pier SIXTY-SIX

RESORT
RESIDENCES

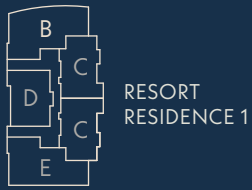
E
ALT

3 BEDROOMS
3.5 BATHROOMS

Interior
2,205 SQFT
204.9 SM

Terrace
828 SQFT
77.0 SM

Total
3,033 SQFT
281.8 SM



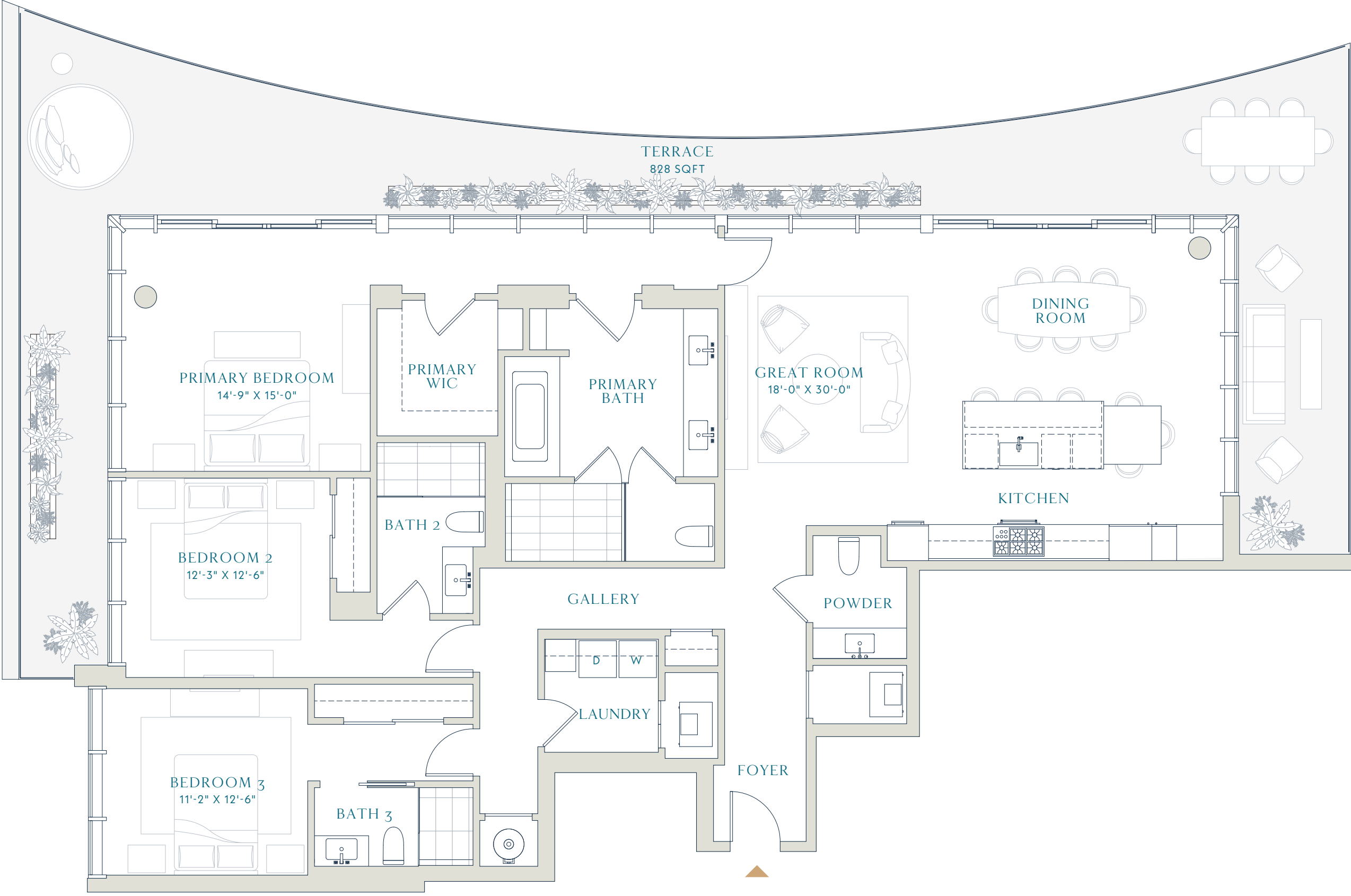
RESORT
RESIDENCE 1



RESORT
RESIDENCE 2



pier SIXTY-SIX
PierSixtySixResidences.com



WATER VIEW



Stated dimensions are measured to the exterior boundaries of the exterior walls and the centerline of interior demising walls (without deductions for interior columns, shear walls or shafts) and in fact vary from the dimensions that would be determined by using the description and definition of the "Unit" set forth in the Declaration (which generally only includes the interior airspace between the perimeter walls and excludes interior structural components, shear walls and shafts). For the calculation of the unit area following the definition of the unit set forth in the Declaration, see Exhibit "3" of the Declaration. Additionally, measurements of rooms set forth on any floor plan are generally taken at the greatest points of each given room (as if the room were a perfect rectangle), without regard for any cutouts. Accordingly, the area of the actual room will typically be smaller than the product obtained by multiplying the stated length times width. All dimensions are approximate, and all floor plans and development plans are subject to change. Brand and Marketing by Williams New York.