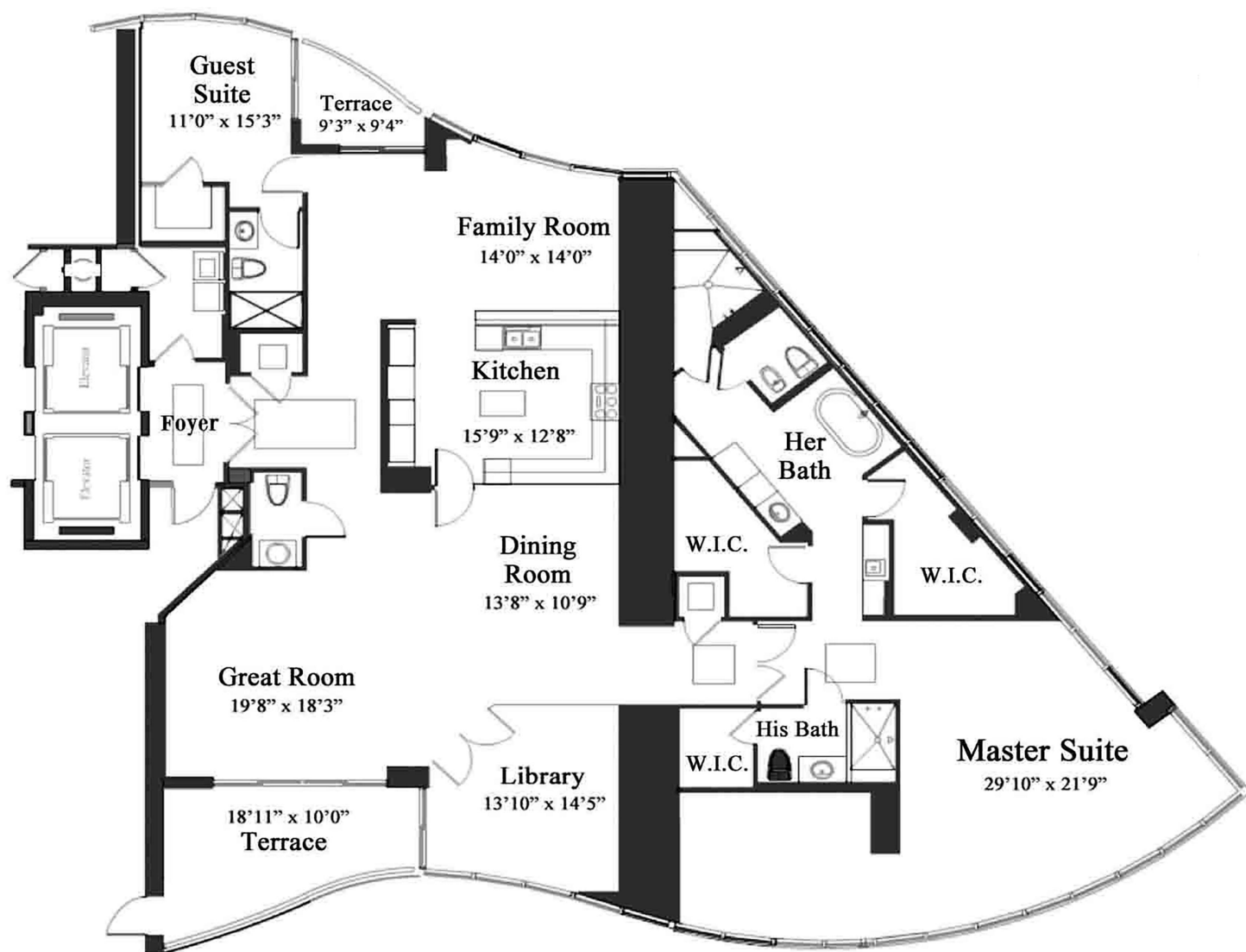




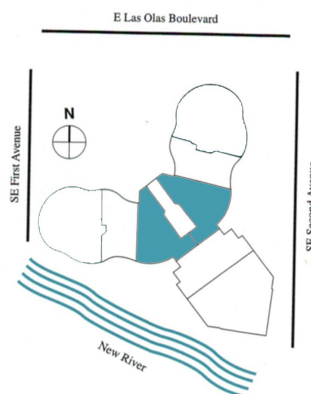
The 5th Avenue



THE 5TH AVENUE

2 BEDROOMS, 3¹/₂ BATHROOMS

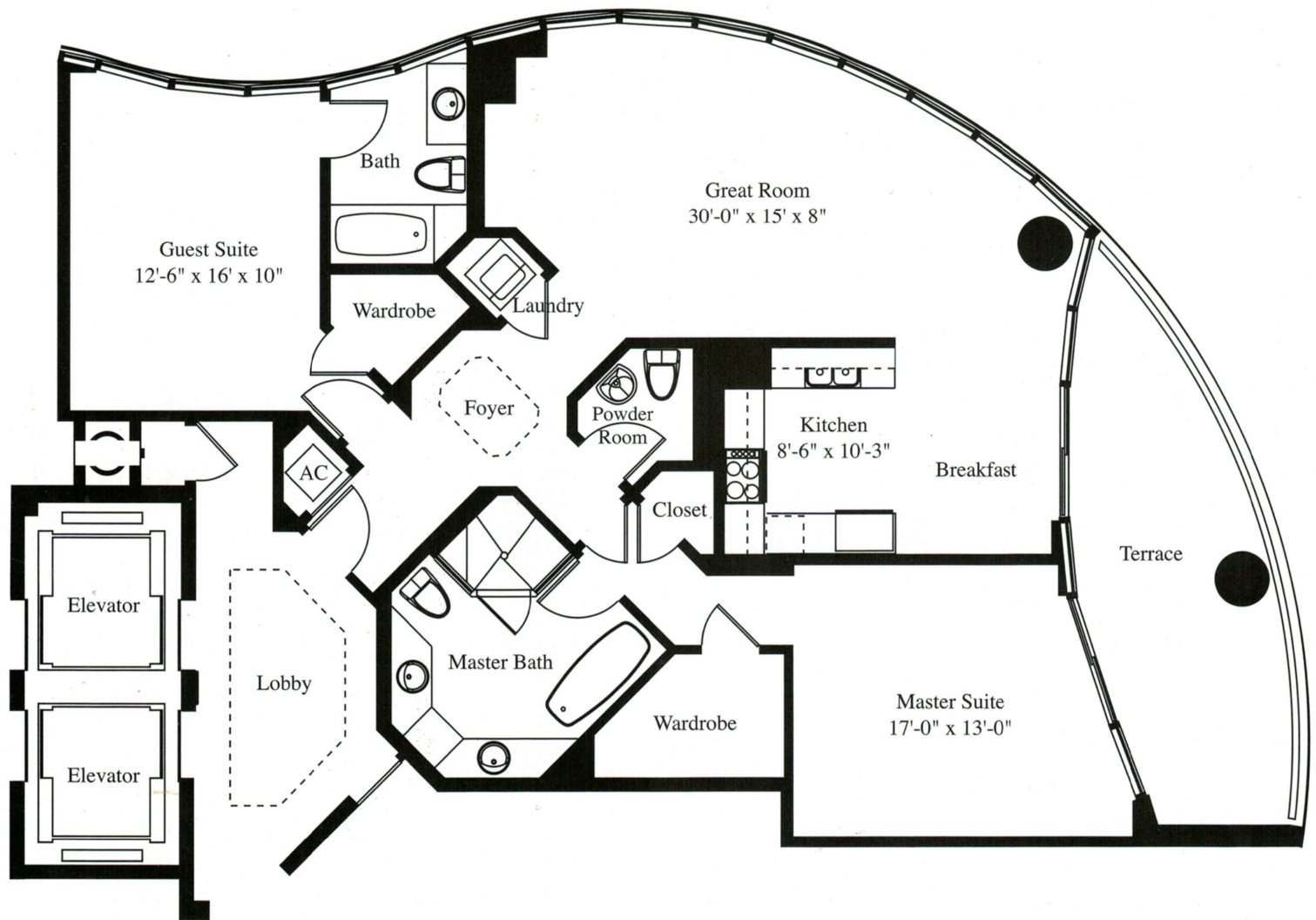
	3,189 Square Feet
Terrace	247 Square Feet
Total	3,436 Square Feet



Oral representations cannot be relied upon. For correct representations, make reference to documents required by section 718.503, Florida statutes, to be furnished by the developer to a buyer. This floorplan is subject to change without notice including all dimensions which are approximate, and all floorplans, ceiling height, dropped ceiling, and development plans. The seller reserves the absolute right, in its sole judgment and discretion, to substitute appliances, materials, fixtures and equipment of equal or greater quality or value for those specified.



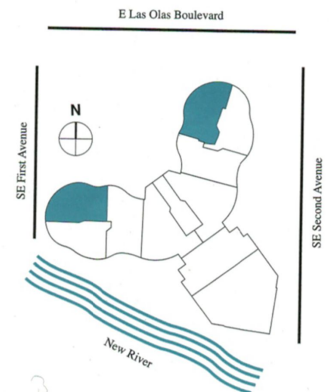
The Chelsea



THE CHELSEA

2 BEDROOMS, 2½ BATHROOMS

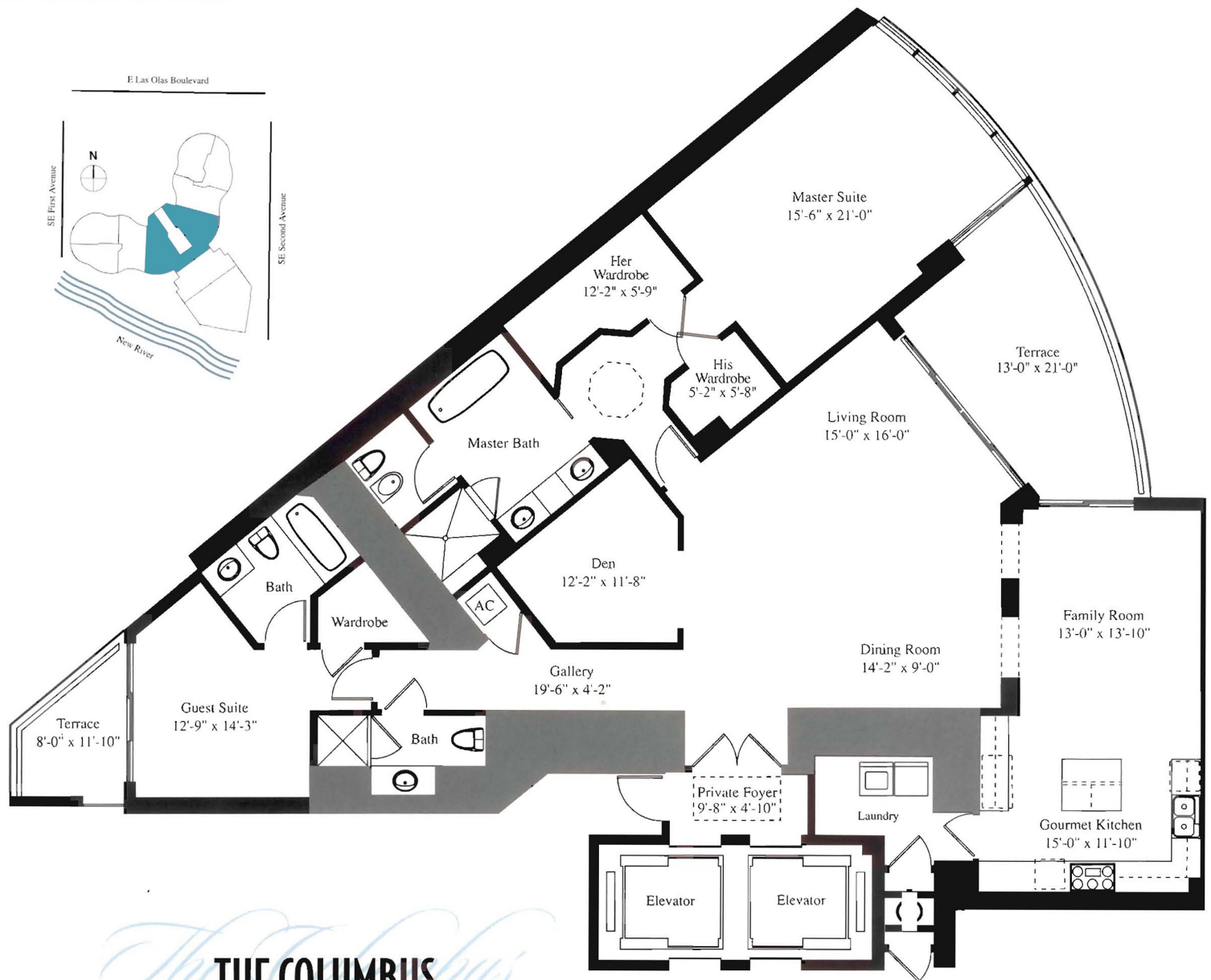
	1,522 Square Feet
Terrace	241 Square Feet
Total	1,763 Square Feet



Oral representations cannot be relied upon. For correct representations, make reference to documents required by section 718.503, Florida statutes, to be furnished by the developer to a buyer. This floorplan is subject to change without notice including all dimensions which are approximate, and all floorplans, ceiling height, dropped ceiling, and development plans. The seller reserves the absolute right, in its sole judgment and discretion, to substitute appliances, materials, fixtures and equipment of equal or greater quality or value for those specified.



The Columbus



THE COLUMBUS

2 BEDROOMS, 3 BATHROOMS, FAMILY ROOM,
DEN, PRIVATE ELEVATOR

2,129 Square Feet

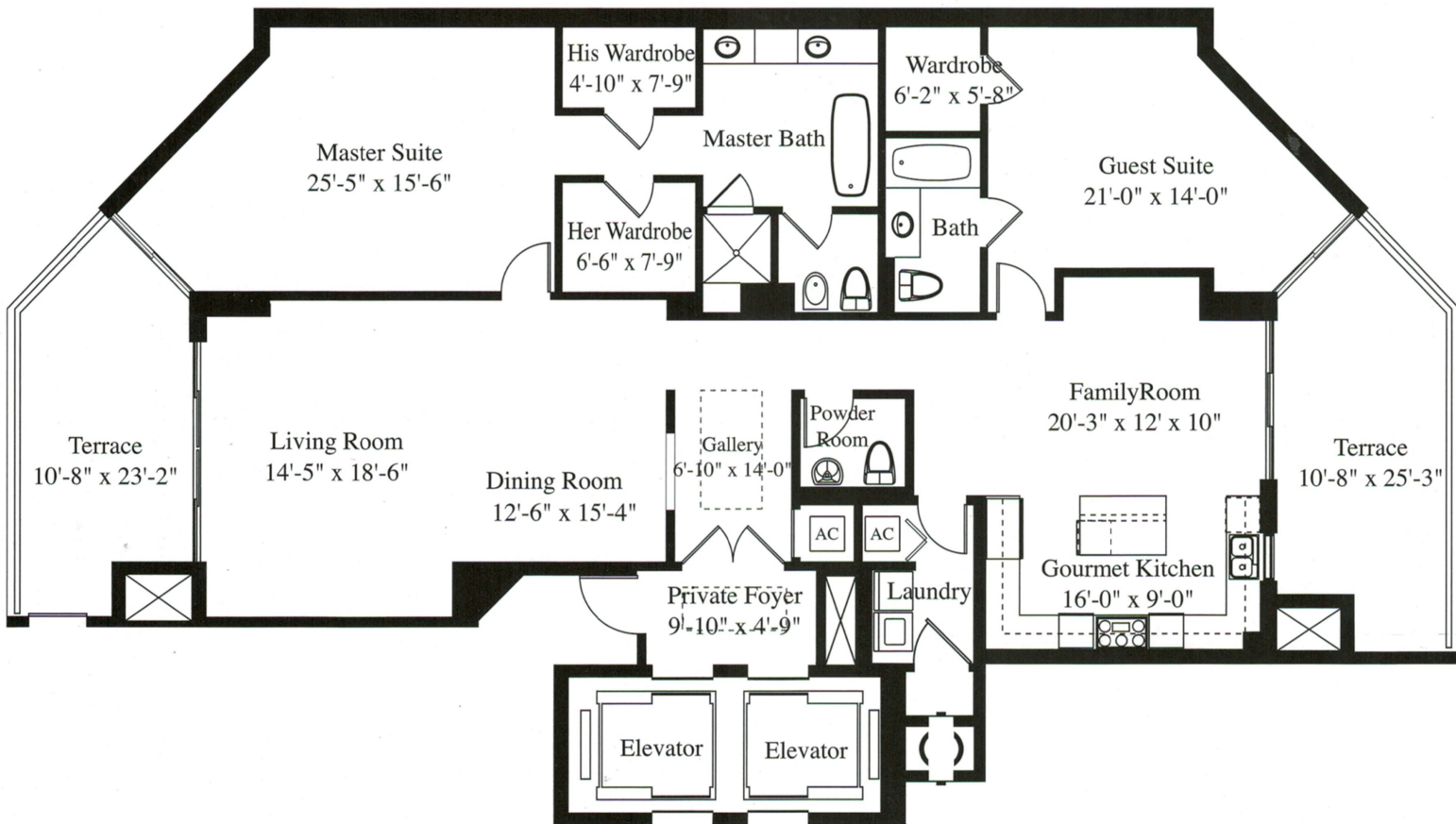
Terrace 276 Square Feet

Total 2,405 Square Feet

Oral representations cannot be relied upon. For correct representations, make reference to documents required by section 718.503, Florida statutes, to be furnished by the developer to a buyer. This floorplan is subject to change without notice including all dimensions which are approximate, and all floorplans, ceiling height, dropped ceiling, and development plans. The seller reserves the absolute right, in its sole judgment and discretion, to substitute appliances, materials, fixtures and equipment of equal or greater quality or value for those specified.



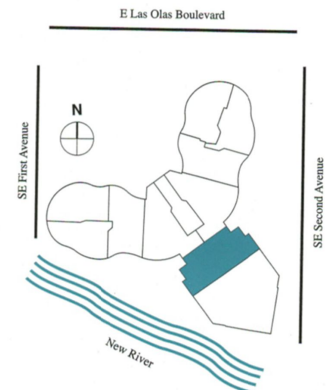
The Gramercy



THE GRAMERCY

2 BEDROOMS, 2½ BATHROOMS,
FAMILY ROOM, PRIVATE ELEVATOR

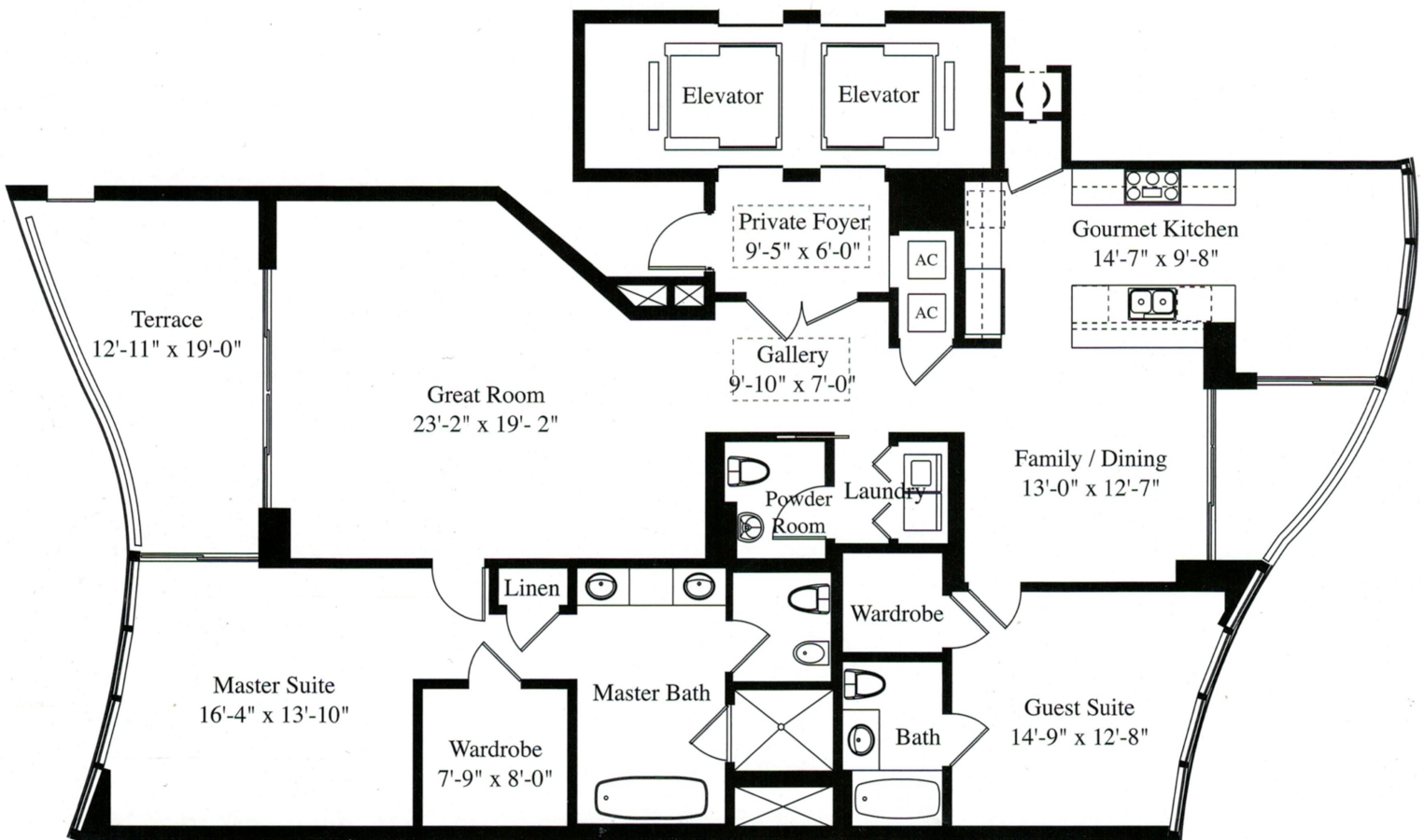
	2,140 Square Feet
Terrace	438 Square Feet
Total	2,578 Square Feet



Oral representations cannot be relied upon. For correct representations, make reference to documents required by section 718.503, Florida statutes, to be furnished by the developer to a buyer. This floorplan is subject to change without notice including all dimensions which are approximate, and all floorplans, ceiling height, dropped ceiling, and development plans. The seller reserves the absolute right, in its sole judgment and discretion, to substitute appliances, materials, fixtures and equipment of equal or greater quality or value for those specified.



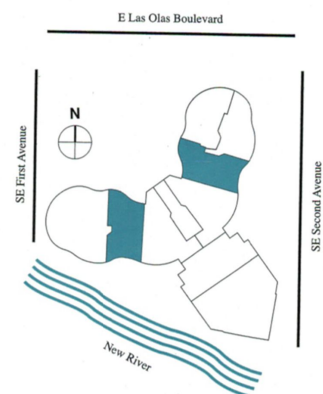
The Lexington



THE LEXINGTON

2 BEDROOMS, 2½ BATHROOMS,
FAMILY ROOM, PRIVATE ELEVATOR

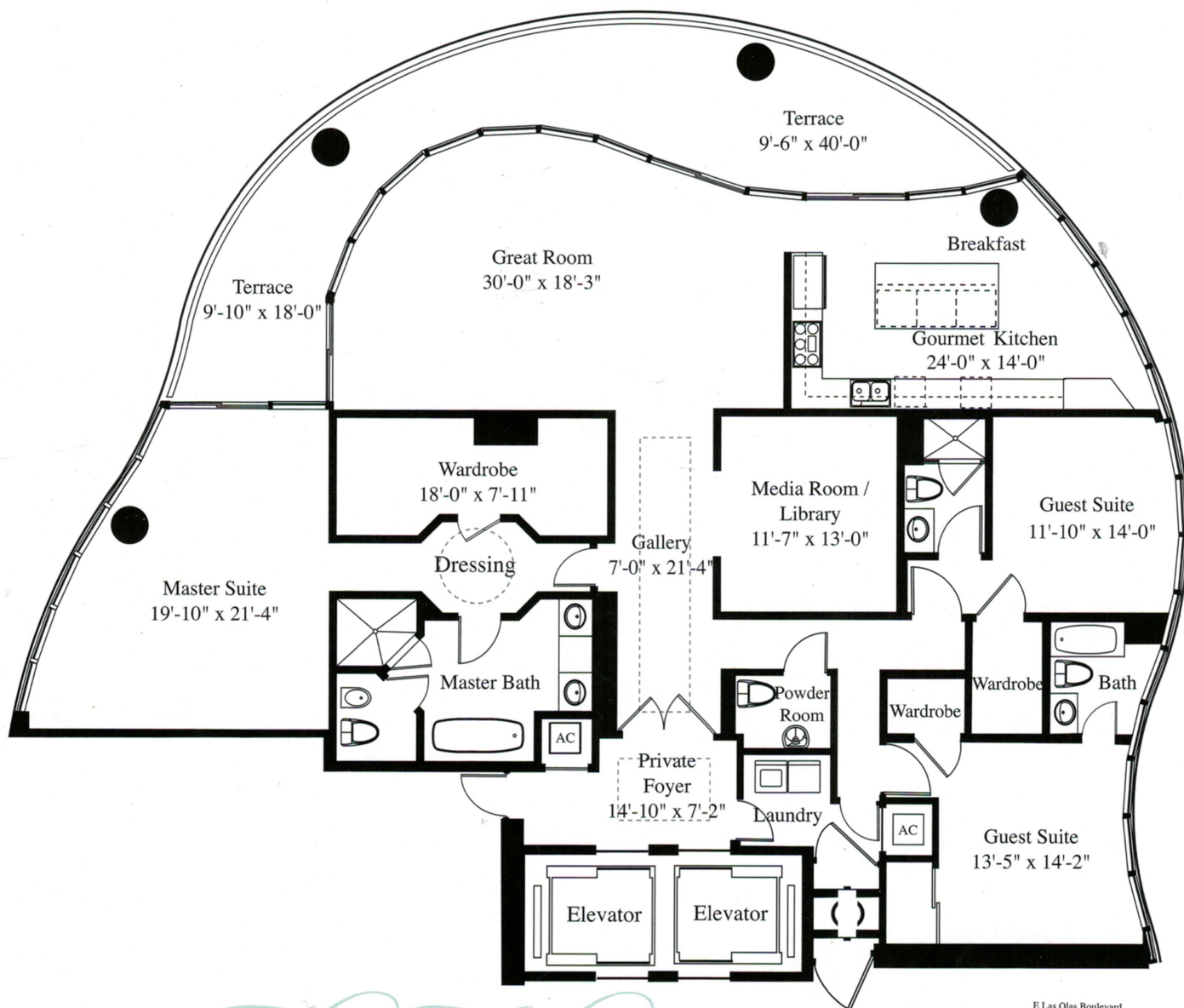
	1,869 Square Feet
<u>Terrace</u>	<u>247 Square Feet</u>
Total	2,116 Square Feet



Oral representations cannot be relied upon. For correct representations, make reference to documents required by section 718.503, Florida statutes, to be furnished by the developer to a buyer. This floorplan is subject to change without notice including all dimensions which are approximate, and all floorplans, ceiling height, dropped ceiling, and development plans. The seller reserves the absolute right, in its sole judgment and discretion, to substitute appliances, materials, fixtures and equipment of equal or greater quality or value for those specified.



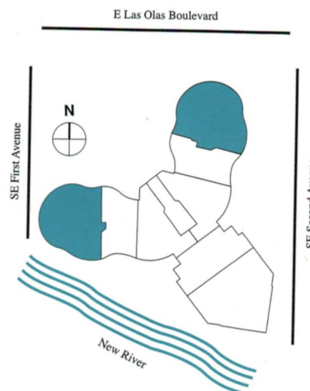
The Madison



THE MADISON

3 BEDROOMS, 3½ BATHROOMS,
MEDIA ROOM/LIBRARY, PRIVATE ELEVATOR

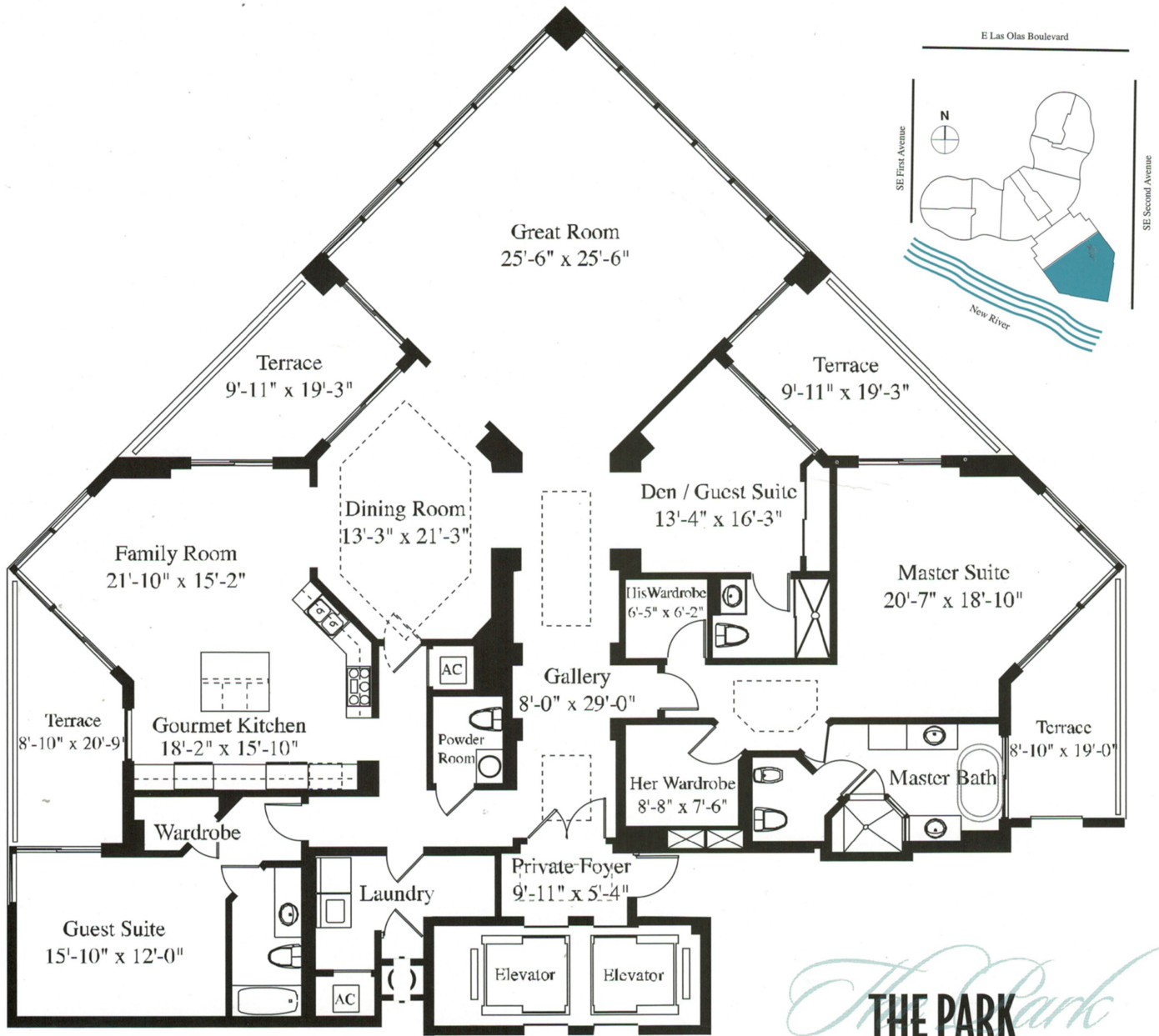
	2,776 Square Feet
Terrace	495 Square Feet
Total	3,221 Square Feet



Oral representations cannot be relied upon. For correct representations, make reference to documents required by section 718.503, Florida statutes, to be furnished by the developer to a buyer. This floorplan is subject to change without notice including all dimensions which are approximate, and all floorplans, ceiling height, dropped ceiling, and development plans. The seller reserves the absolute right, in its sole judgment and discretion, to substitute appliances, materials, fixtures and equipment of equal or greater quality or value for those specified.



The Park



THE PARK

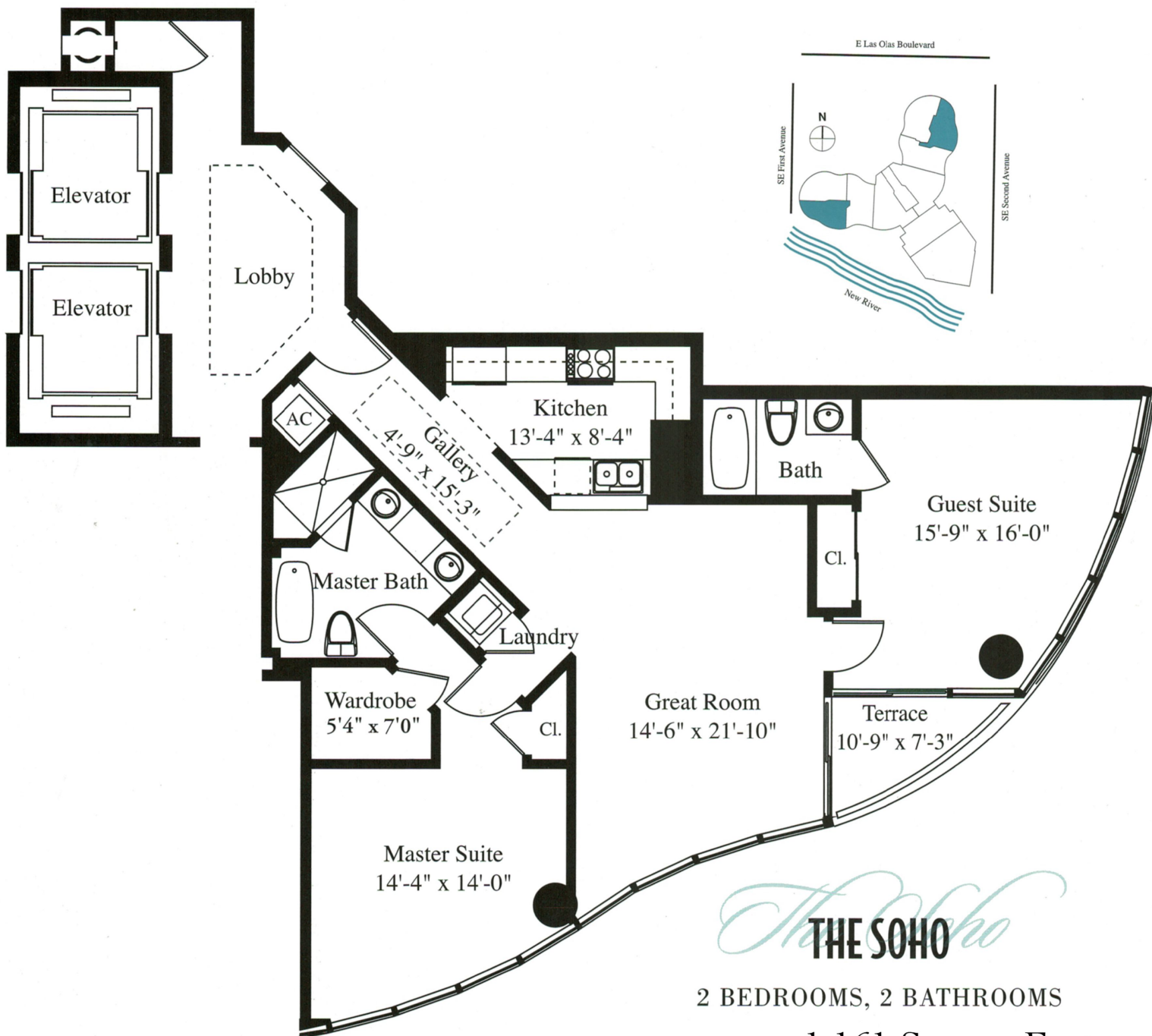
3 BEDROOMS, 3½ BATHROOMS,
FAMILY ROOM, PRIVATE ELEVATOR

	3,239 Square Feet
Terrace	600 Square Feet
Total	3,839 Square Feet

Oral representations cannot be relied upon. For correct representations, make reference to documents required by section 718.503, Florida statutes, to be furnished by the developer to a buyer. This floorplan is subject to change without notice including all dimensions which are approximate, and all floorplans, ceiling height, dropped ceiling, and development plans. The seller reserves the absolute right, in its sole judgment and discretion, to substitute appliances, materials, fixtures and equipment of equal or greater quality or value for those specified.



The Soho



	1,161 Square Feet
Terrace	48 Square Feet
Total	1,209 Square Feet

Oral representations cannot be relied upon. For correct representations, make reference to documents required by section 718.503, Florida statutes, to be furnished by the developer to a buyer. This floorplan is subject to change without notice including all dimensions which are approximate, and all floorplans, ceiling height, dropped ceiling, and development plans. The seller reserves the absolute right, in its sole judgment and discretion, to substitute appliances, materials, fixtures and equipment of equal or greater quality or value for those specified.